

Psathyrella cf orbitarum (Romagn.) M. M. Moser 1967 in Gams, Kl. Kryptog.fl. 2b/2, 3. Aufl.: 215
Groupe prona.



Photo in situ Bruno de Ruvo
Foto 8799 del 04.08.2022 - Ceppo di R.S.Maria (TE)



Base du stipe bulbilleuse





Description de Melzer

Macrocharacters:

Pileus 2-5 (-18) mm broad, hemispherical to conical, brown to dark brown, strongly micaceous, hardly striated, hygrophane, fading to pale brown, mostly with pink or purple hues. Veil young distinct, but volatile.

Lamellae distant, broad, adnate, edge white, old reddish underlined.

Stipe 15-25 x 0,1-0,2 mm, whitish, delicate and flexible, base tomentose.

Microcharacters:

Spores mostly 8,7-13 (-14) x 5-6,5 (-7,5) μm , av. 9,3- 13,7 x 5,1-7,3 μm , av. $Q=1,63-1,87$, ellipsoid, slender ovoid, not rarely with protruding distinct germ pore. From 2(1)-spored basidia (11-) 12,5-16 (-20) x 5,5-8,5 μm . In water and ammonia reddish brown, in KOH dirty grey brown (not blackish brown), often with 1-2 oil drops, not opaque.

Basidia 19-27 x 8-11 μm , mostly 2-spored, often 1-spored, rarely 4-spored.

Cheilocystidia 20-50 x 7-15 μm , numerous but not crowded, absent near the margin of the cap. Edge with many clavate and sphaeropedunculate cells, near the margin of the cap in multiple layers, 11-20 (-30) x 7-13,5 μm , some with slightly thickened walls.

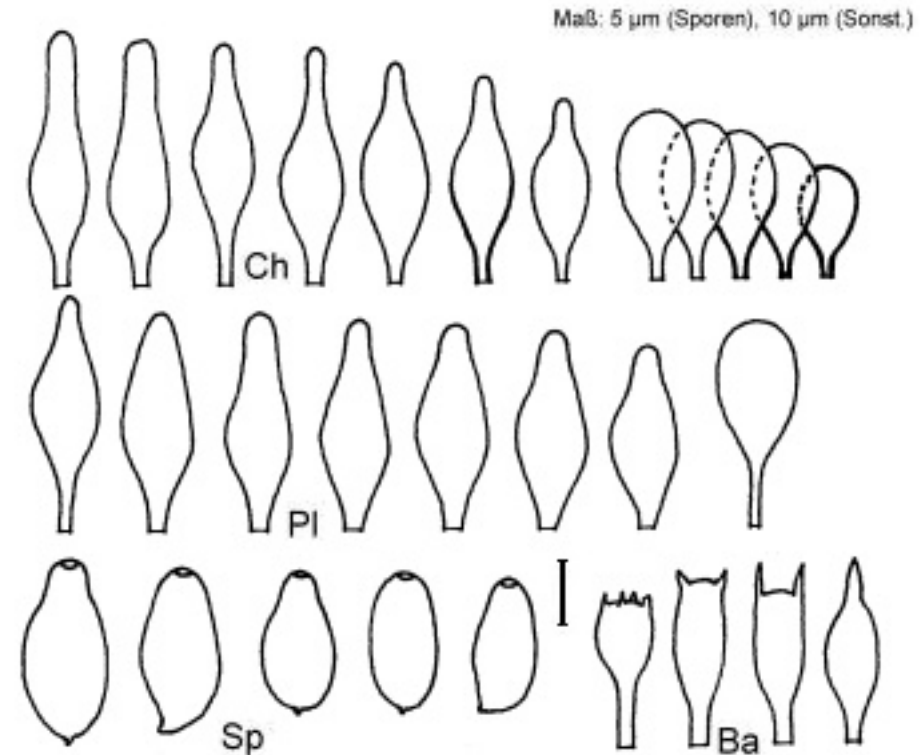
Edge 15-30 μm wide yellowish brown underlined, near the stipe often not pigmented.

Pleurocystidia 30-80 x 8-16 μm , rare. Sometimes sphaeropedunculate.

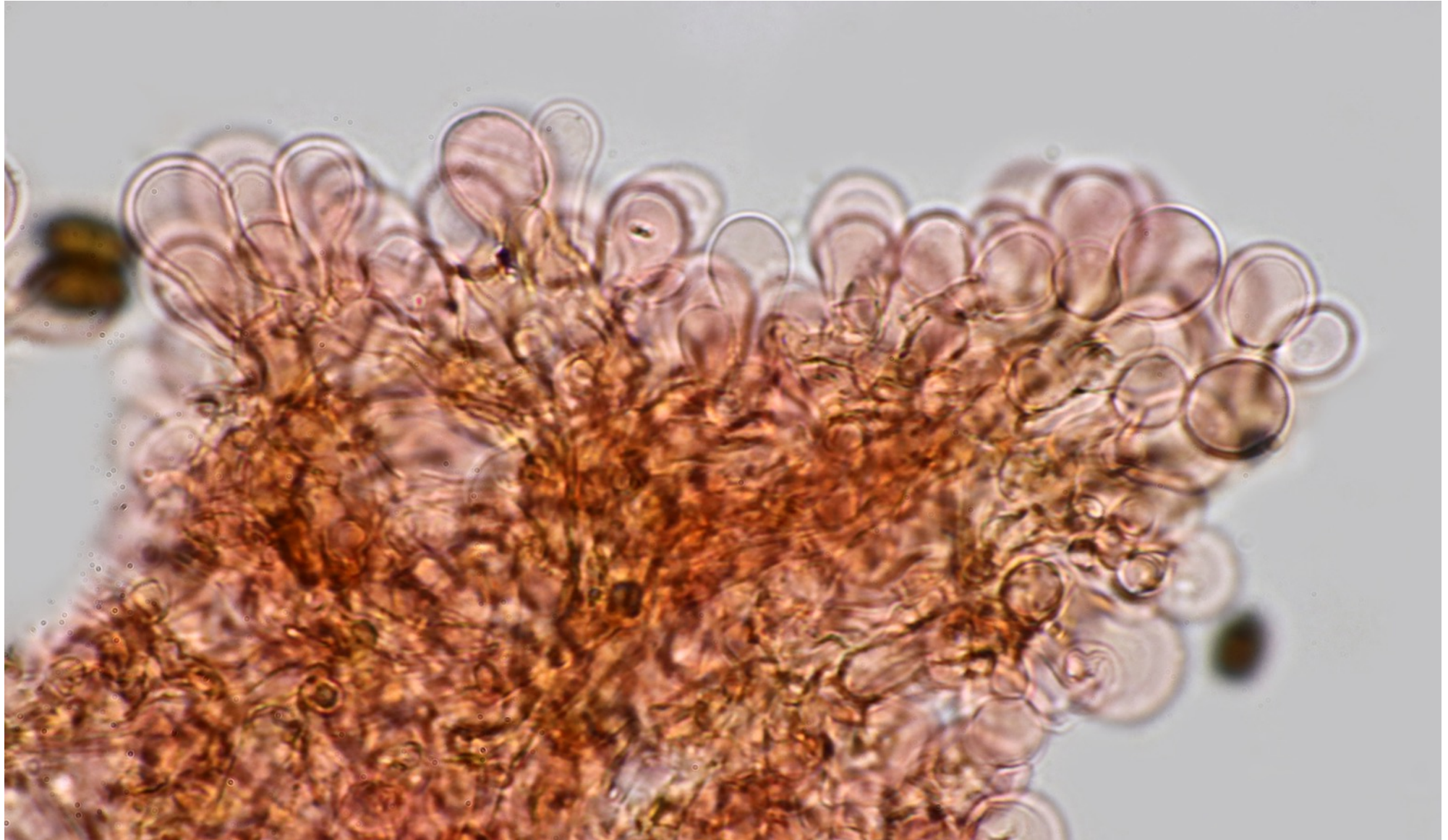
Clamps present.

Remarks:

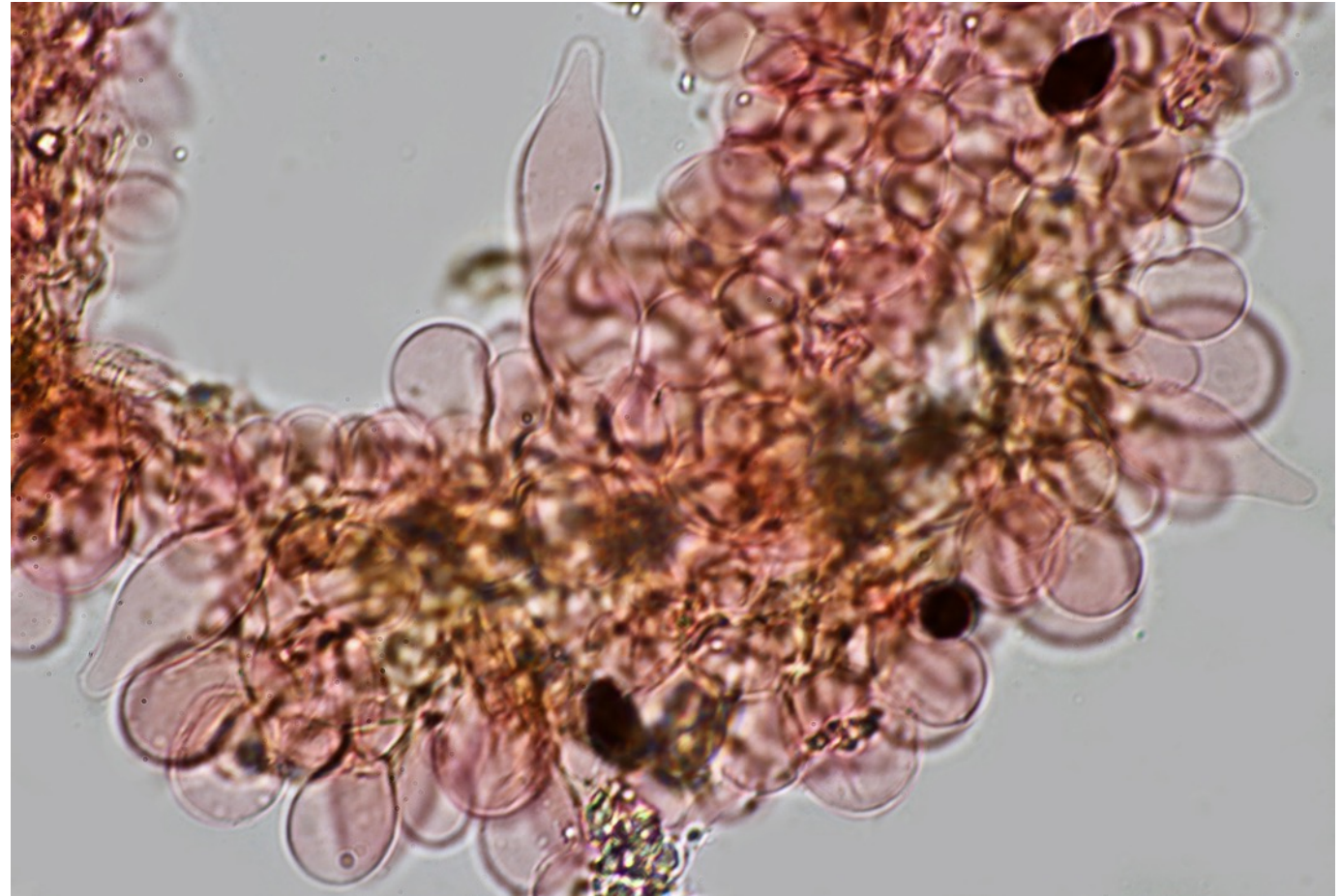
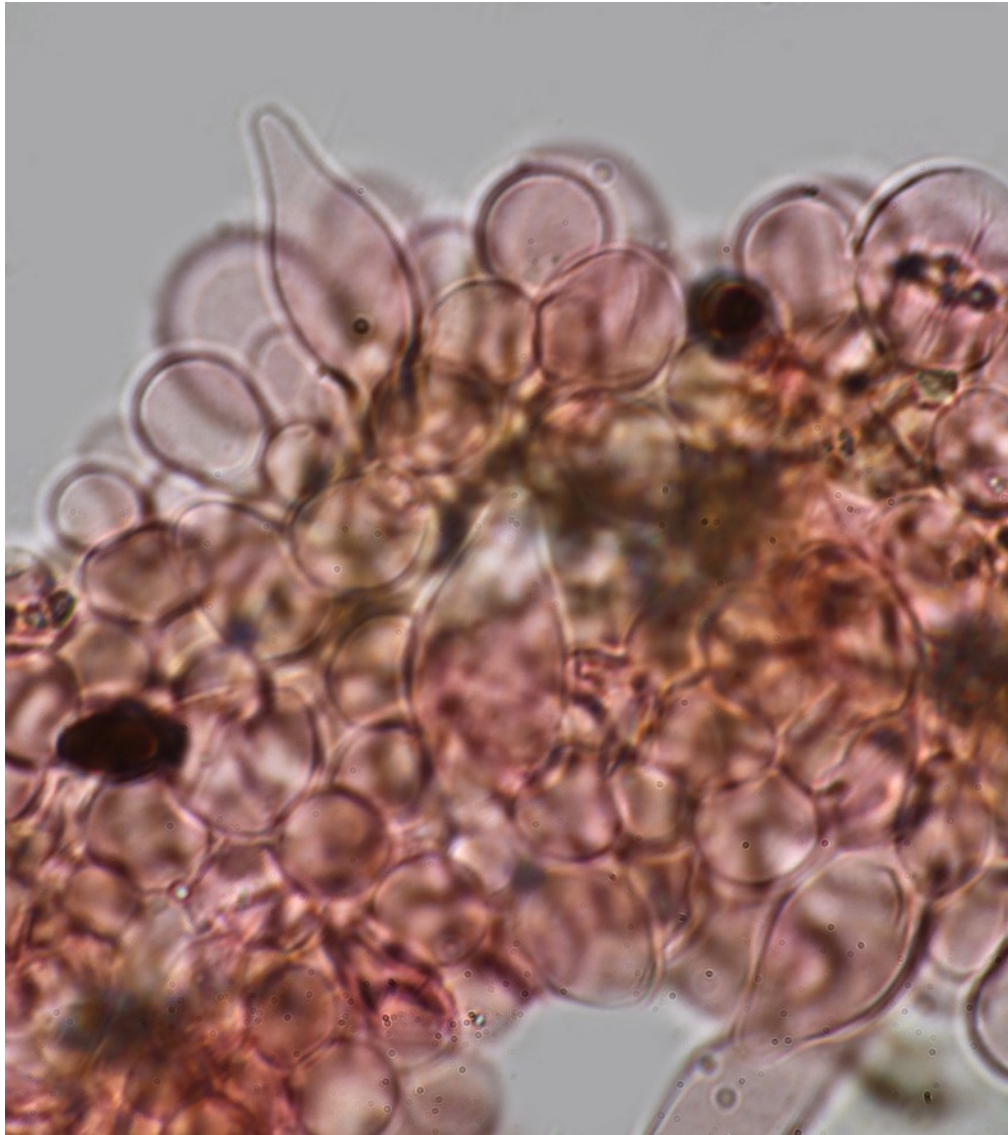
The status of *Psathyrella orbitarum* is quite controversial. Molecular biological studies (Larsson & Örstadius 2008), however, show genetic differences to *Psathyrella prona*.



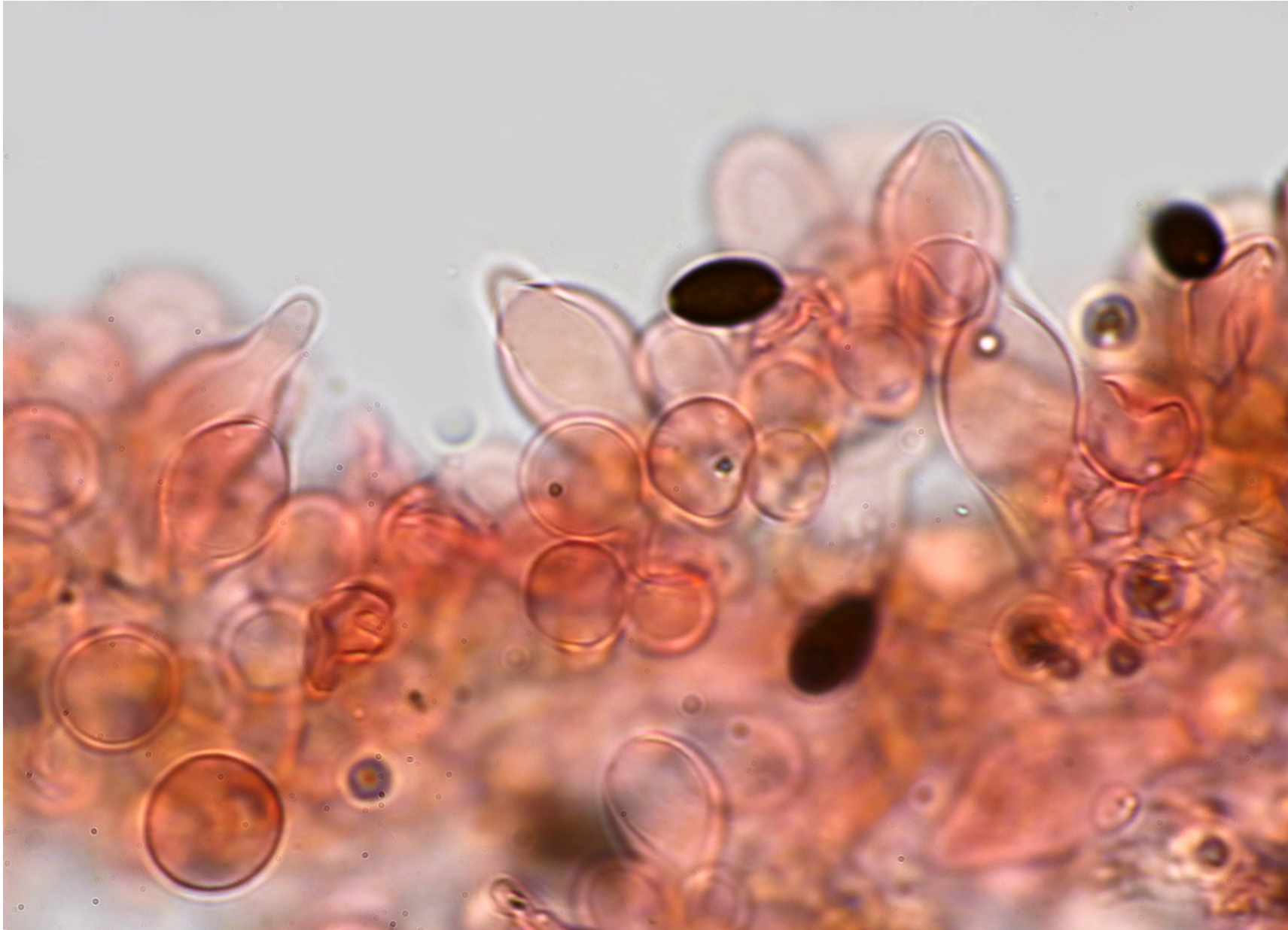
Nombreuses paracystides clavées, colorées, à paroi épaisse tout au long de l'arête mais plus fréquentes à proximité de la marge du chapeau



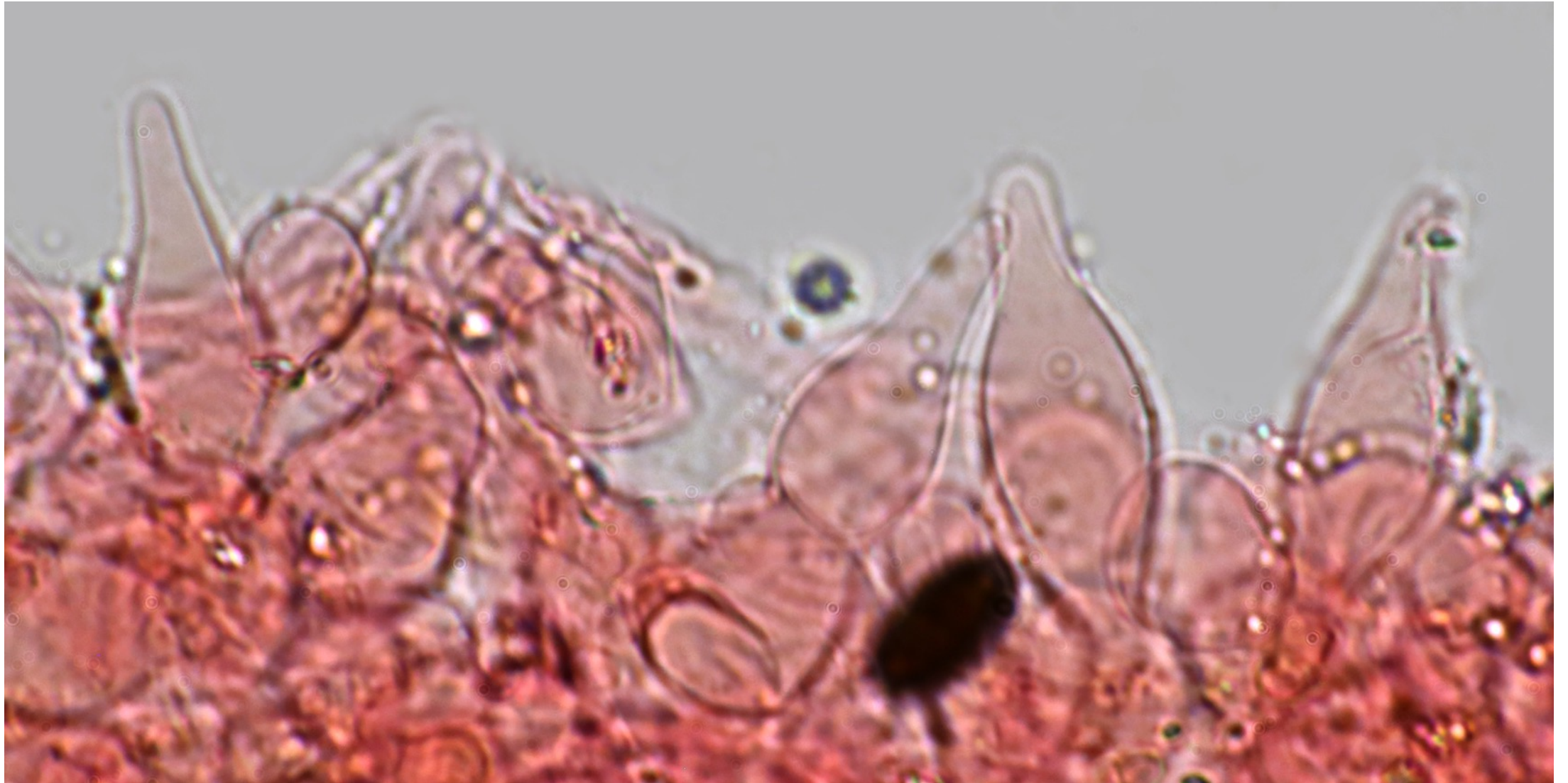
Cheilocystides éparses, peu fréquentes, masquées par les très nombreuses paracystides.

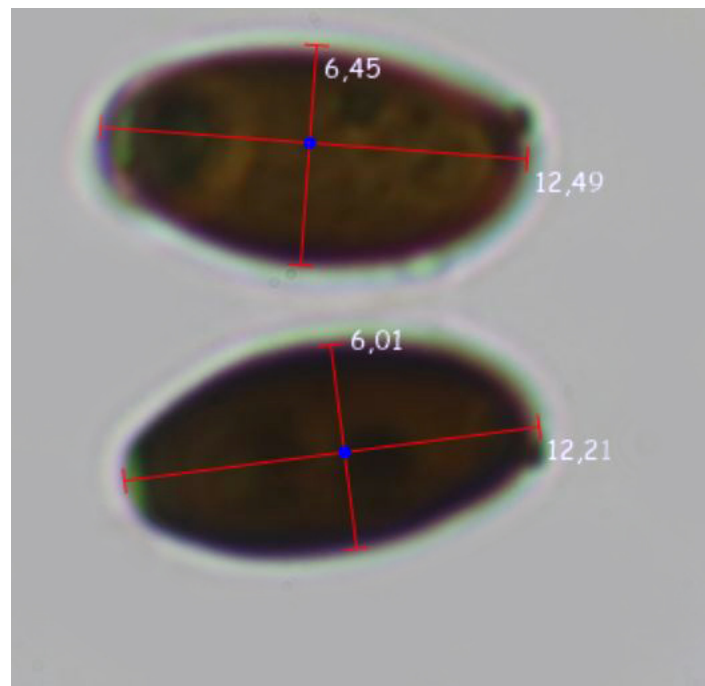
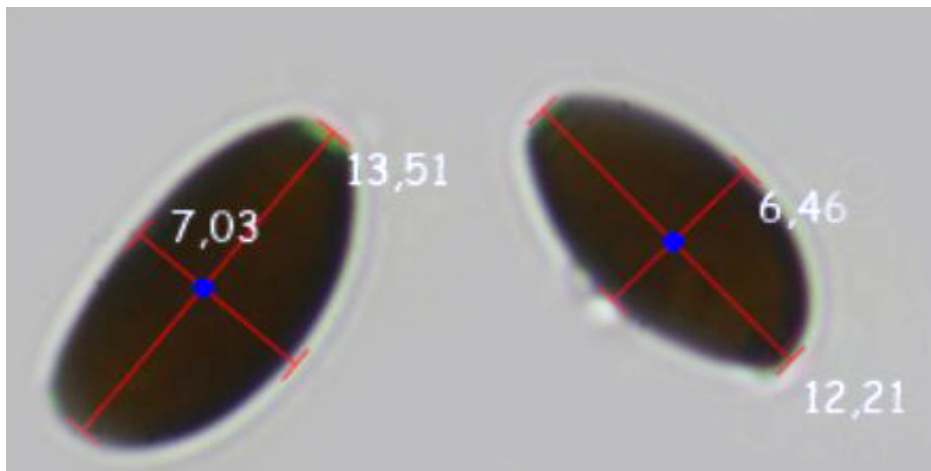
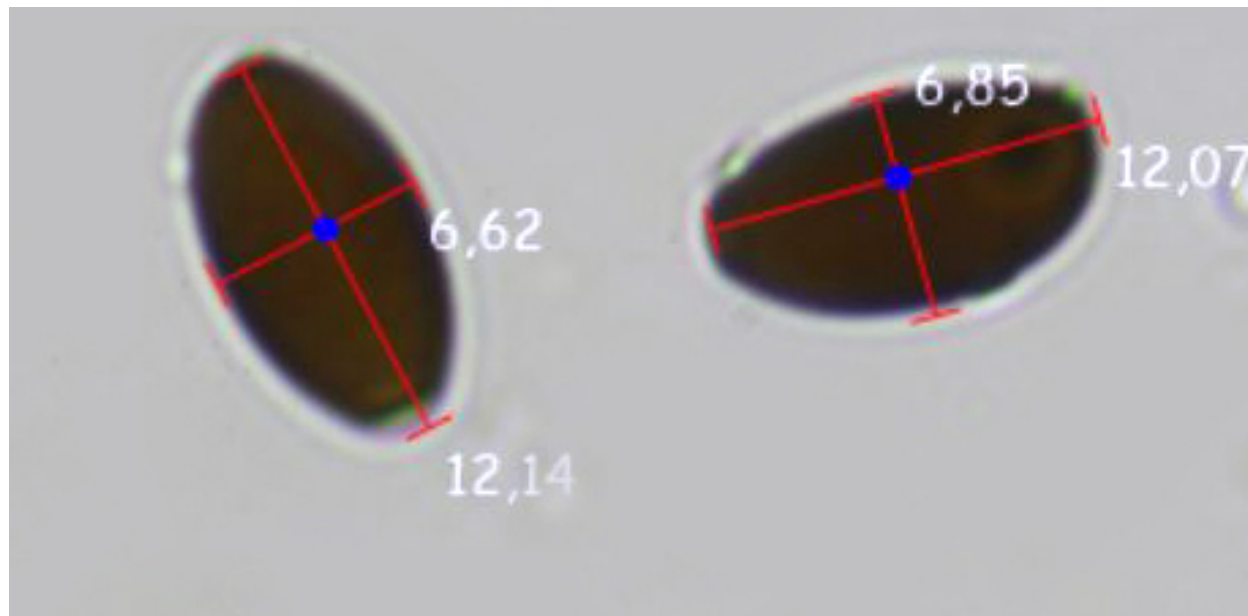
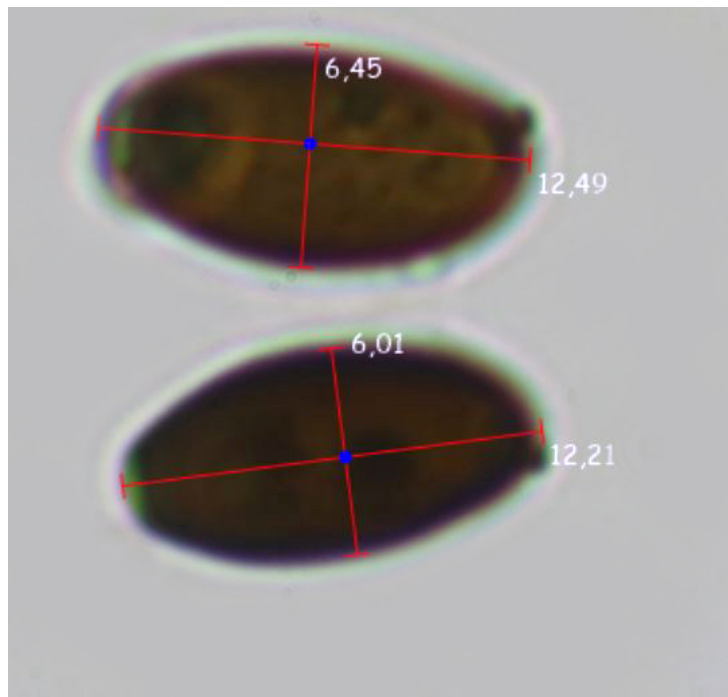


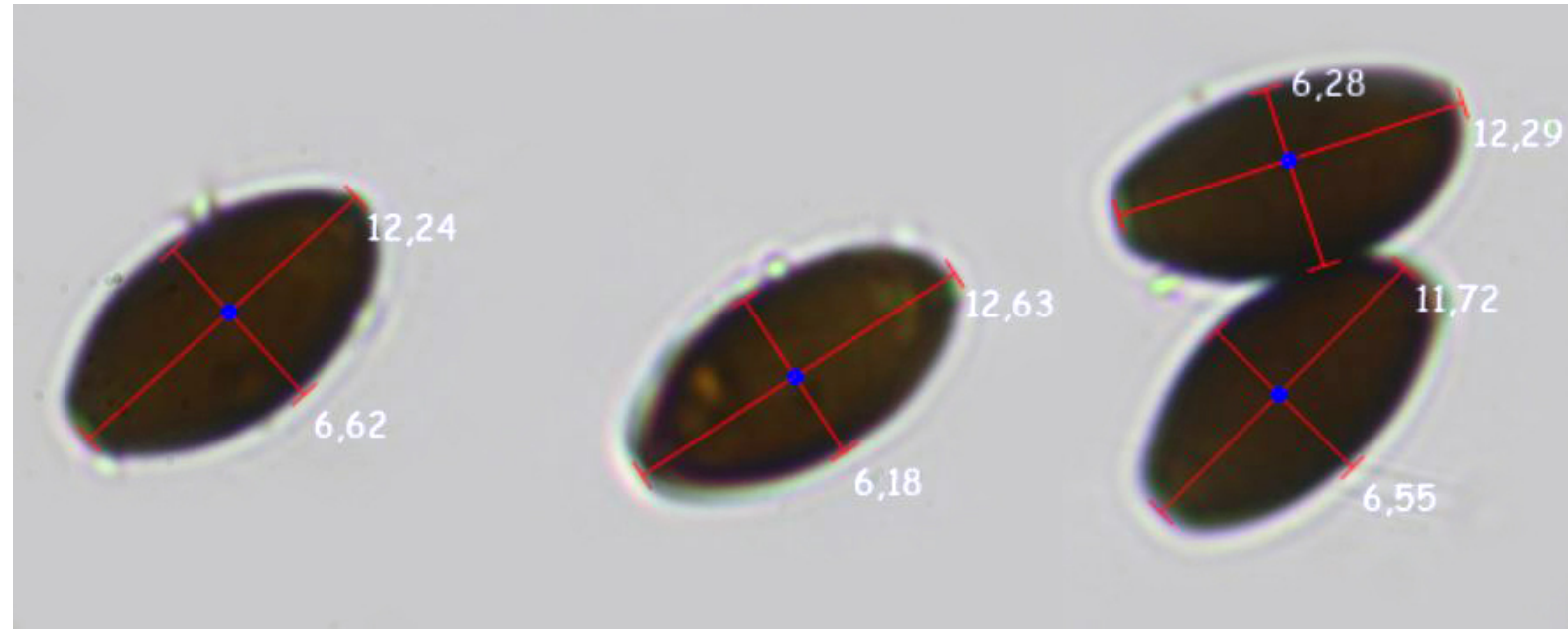
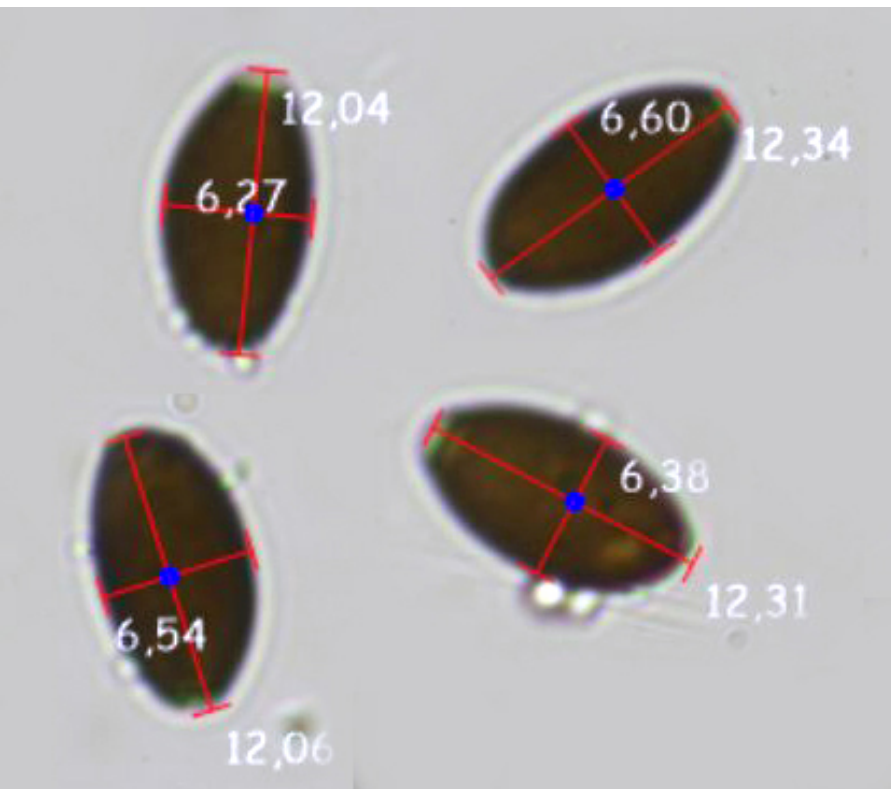
Cheilocystides éparses d'aspect typique du groupe prona



Cheilocystides éparses d'aspect typique du groupe prona, lagéniformes avec un long col effilé.







N = 27

(11,7) 12,1 - 12,8 (13,5) × (6) 6,3 - 6,7 (7) μm

Me = 12,4 × 6,5 μm ;

Q = (1,8) 1,83 - 2 ; Qe = 1,9

Basides tétrasporiques.

Pleurocystides analogues aux cheilocystides peu fréquentes ou très difficiles à observer car l'exicatum est minuscule.

Boucles présentes.