

***Psathyrella orbicularis* (Romagn.) Kits. v. Wav. 1976** in Persoonia 8: 388

Quelques observations complémentaires

Daniel Deschuyteneer

Dans l'humus, en lisière de forêt de feuillus divers. Le 10/10/2022 – Kampenhout – Belgium .

Diamètre 7mm – Stipe lisse 65 x 1- (2) mm, prumineux au sommet ; base du stipe radicante ;

lames ventrues, adnées, serrées, surlignées de rouge-brunâtre de manière continue.

Voile fibrilleux blanchâtre sous forme de fibrilles dispersées sur le chapeau qui devient ridé et rosit en se déshydratant.





Description et dessins de *Andreas Melzer*

Macrocharacters:

Pileus 2-20 mm broad, hemispherical to campanulate, never expanding, moist dark brown with a contrasting brighter, almost white, and often somewhat uneven margin, striated, fading to pale brown, then a little rugolose.

Veil in young fruitbodies clearly as white fluff, volatile.

Lamellae moderately close, 16-22 touche the stipe, narrowly adnate, dark grey to blackish, edge mostly pinkish to reddish underlined.

Stipe 20-70 x 0,5-2 mm, white to yellowish, longitudinally fibrillose, apex pruinose, base tomentose, with a short pseudorhiza.

Spore print black.

Microcharacters:

Spores 10-14 x 5-7 μm , av. 10,7-13,1 x 5,8-6,7

μm , av. $Q=1,70-2,10$, ellipsoid, germ pore large, truncate. In water and ammonia medium brown, in KOH dark brown with reddish tones, subopaque to opaque.

Basidia 16,4-34 x 8-13 μm , 4-spored.

Cheilocystidia 20-45 (-50) x 5,5-13,5 μm , mostly crowded, but also with gaps.

Undermixed by a few sphaeropedunculate and clavate marginal cells, up to 27 x 13,5 μm .

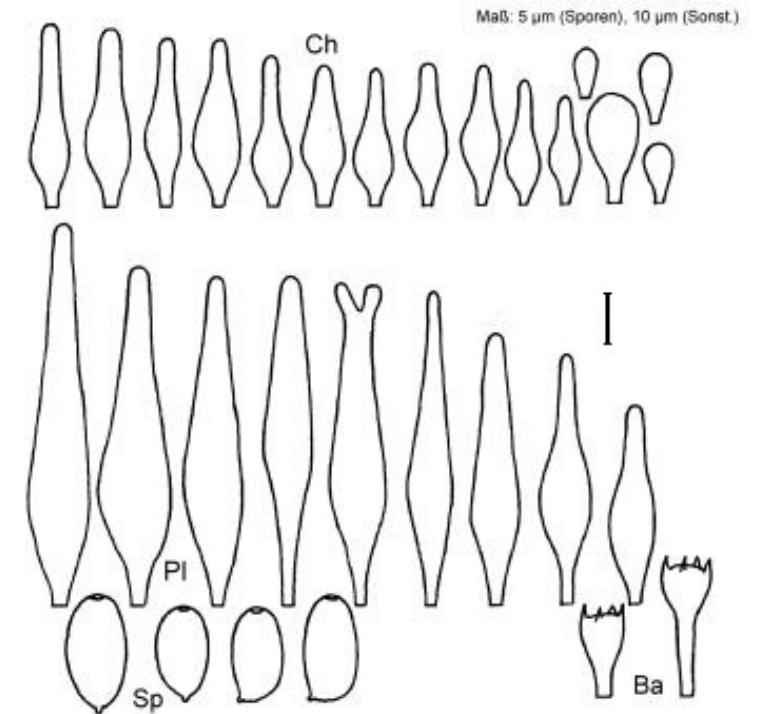
Edge 30-100 μm wide yellowish brown to brownish pigmented.

Pleurocystidia (35-) 40-82 x 8-18 μm , very numerous.

Clamps present.

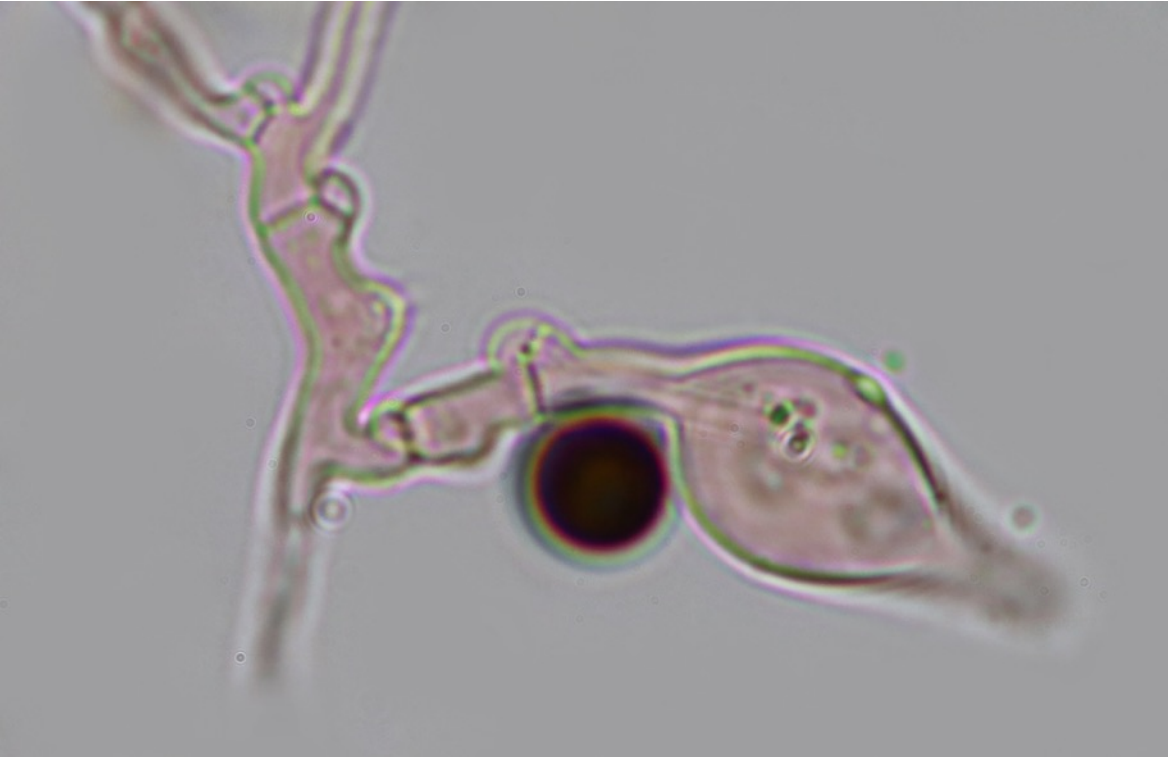
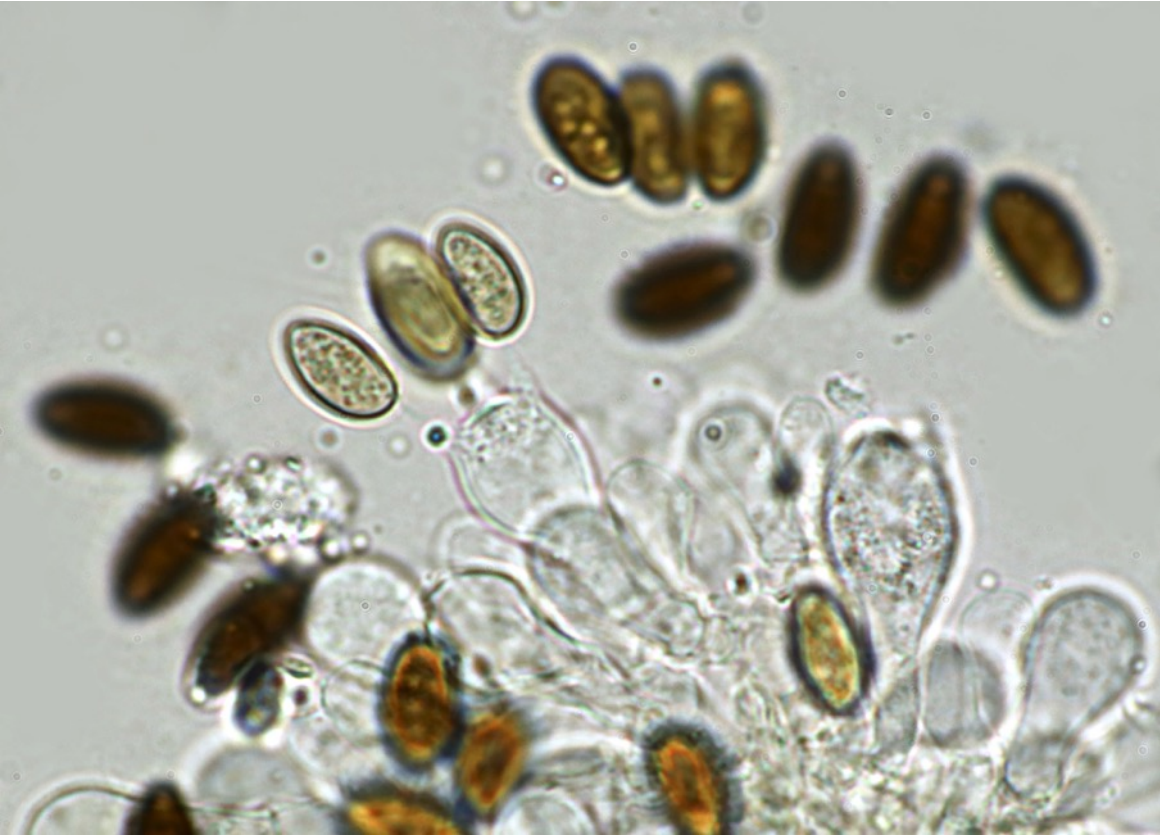
Remarks:

Microscopically *Psathyrella orbicularis* and *Psathyrella microrhiza* can not be separated.

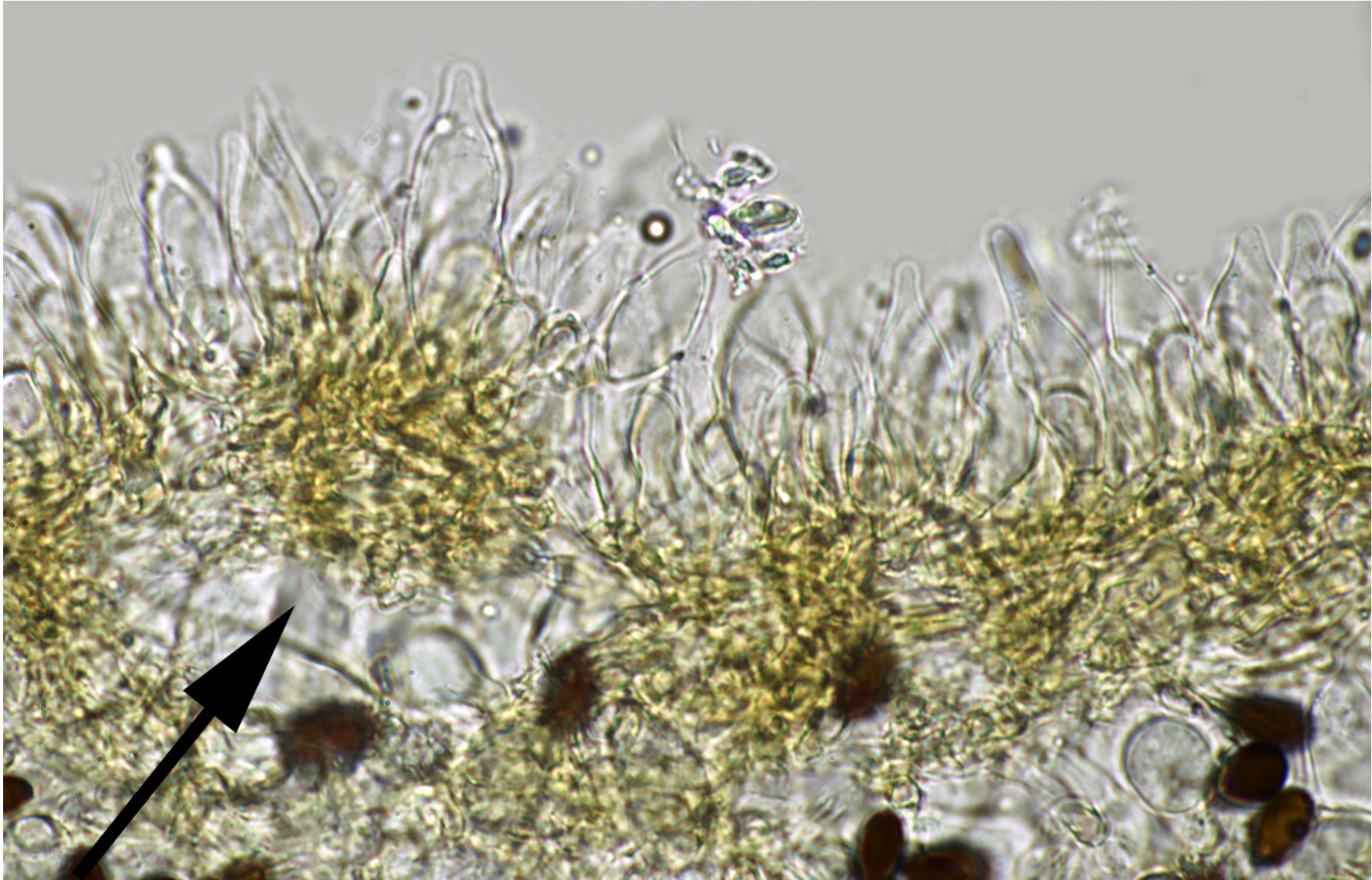


Basides : tétrasporiques

Boucles : présentes



Arête des lames surlignée de fibres et paracystides jaunâtres (voir la zone fléchée), densément couverte de cheilocystides hyalines, à paroi mince, lagéniformes, à col court dont le sommet est sub-aigu à légèrement obtus.



Cheilocystides hyalines, lagéniformes, à col court dont le sommet est subaigu, mélangées à des paracystides clavées à paroi épaisse jaunâtre, responsables du surlignage de l'arête des lames.



Cheilocystidia hyaline, lageniform, short-necked, with a subacute apex, mixed with clavate paracystidia with a yellowish thickened wall, responsible for the underlining of the gill edge.



Pleurocystides nombreuses hyalines analogues aux cheilocystides.
Pleurocystidia numerous, hyaline, similar to cheilocystidia.



Spores, opaques, brun-rougeâtre, ellipsoïdes de face, amygdaliformes de profil, spore germinatif large, central.
Spores opaque, reddish-brown, ellipsoid in face view, amygdaliform in profile, germ spore broad, central.



Spores mesures : N = 40

(11,3) 11,6 - 12,8 (14) × (5,9) 6,2 - 6,7 (7,1) μm

Me = 12,2 × 6,5 μm ;

Q = (1,7) 1,8 - 2 (2,1) ; Qe = 1,9

Discussion:

Macroscopiquement, *Psathyrella orbicularis* est en fait une « mini » *Psathyrella microrrhiza*, plus gracile, de plus petites dimensions, ne devenant pas plan convexe, et partageant des caractéristiques microscopiques analogues. Macroscopically,

Macroscopically, *Psathyrella orbicularis* is in fact a 'mini' *Psathyrella microrrhiza*, which is more gracile, smaller in size, which does not become plane-convex, and which shares similar microscopic characteristics.