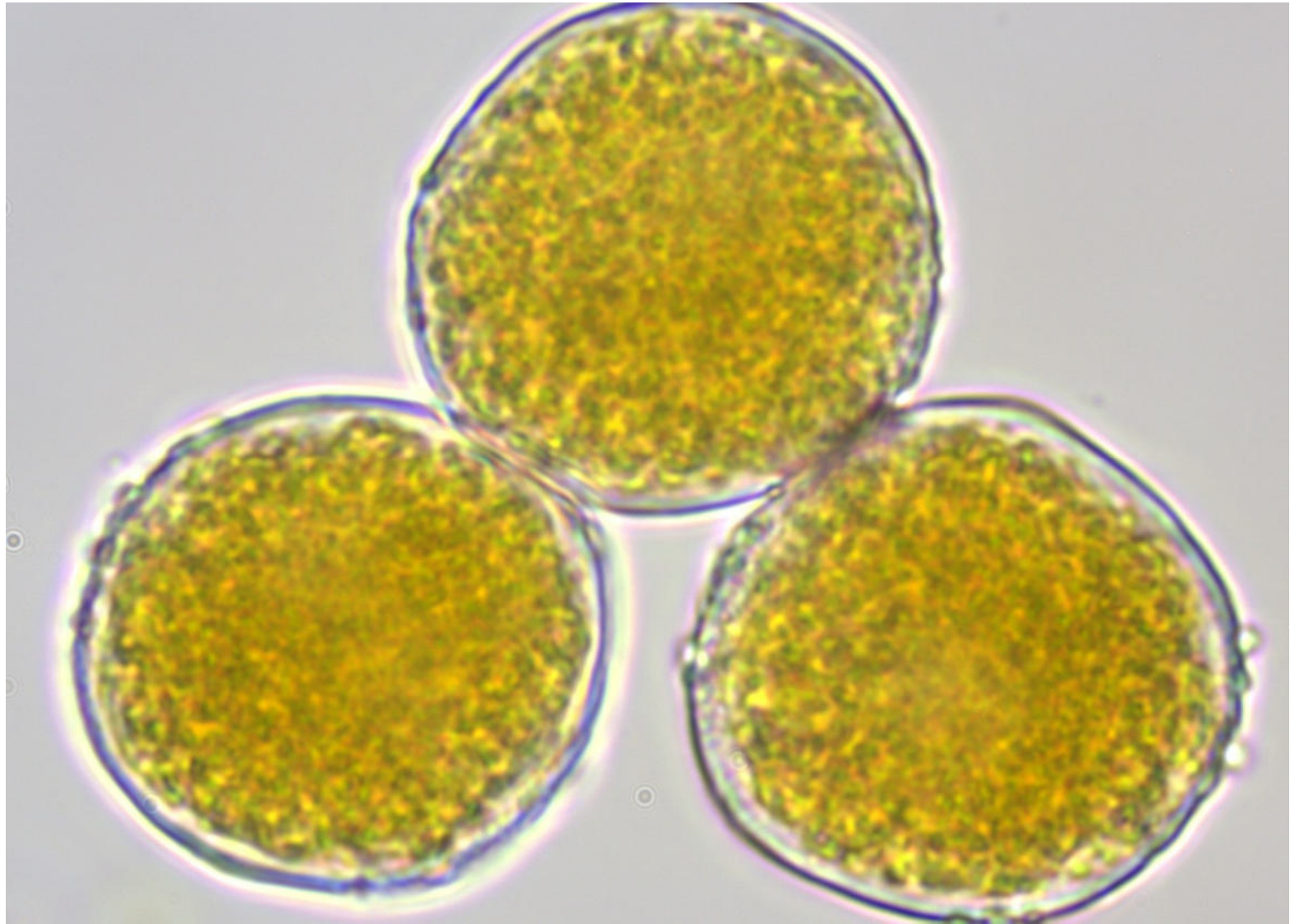
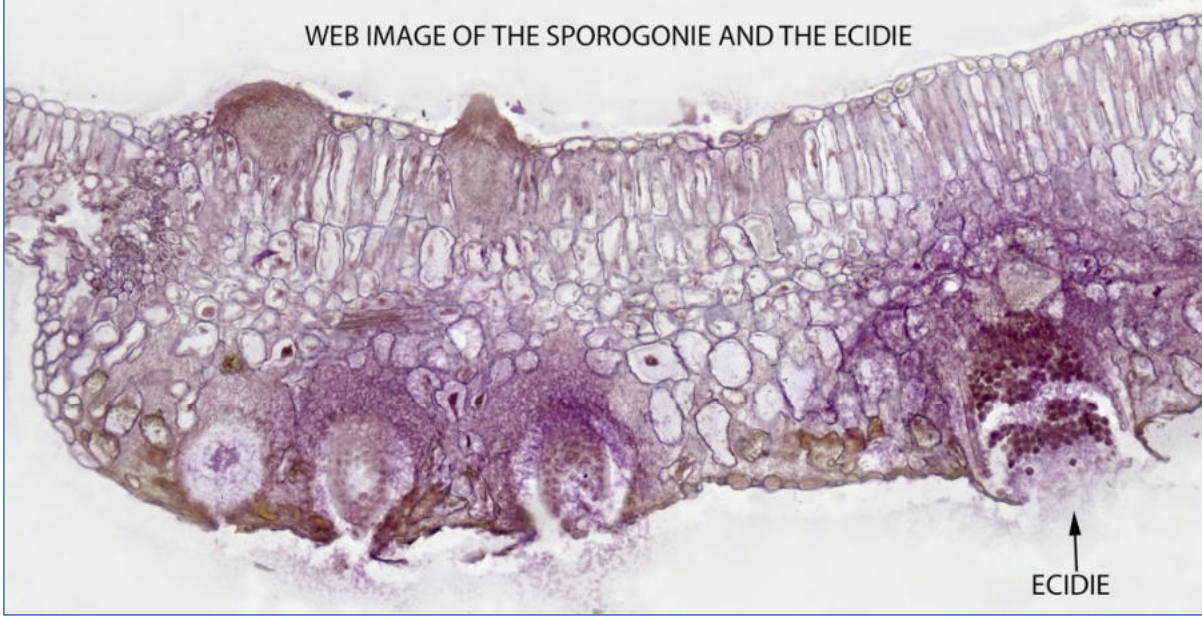
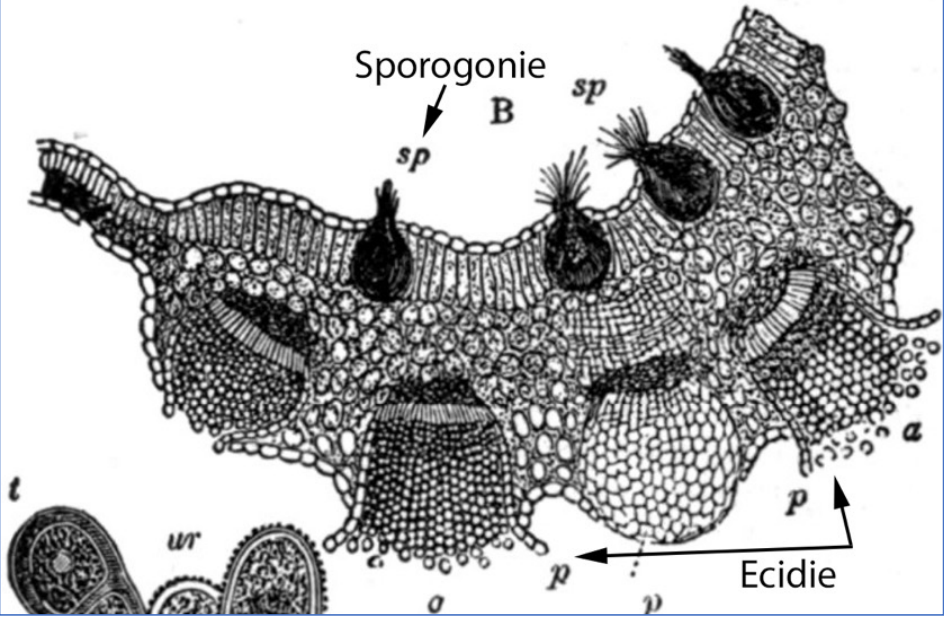
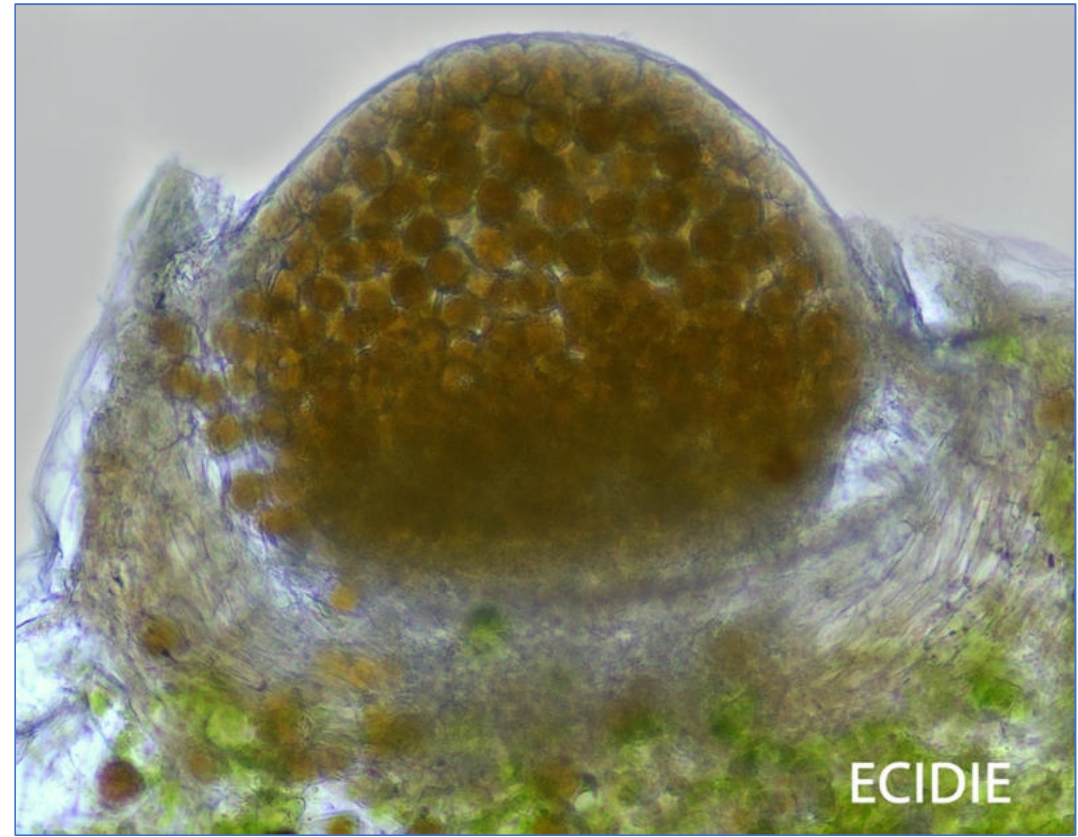


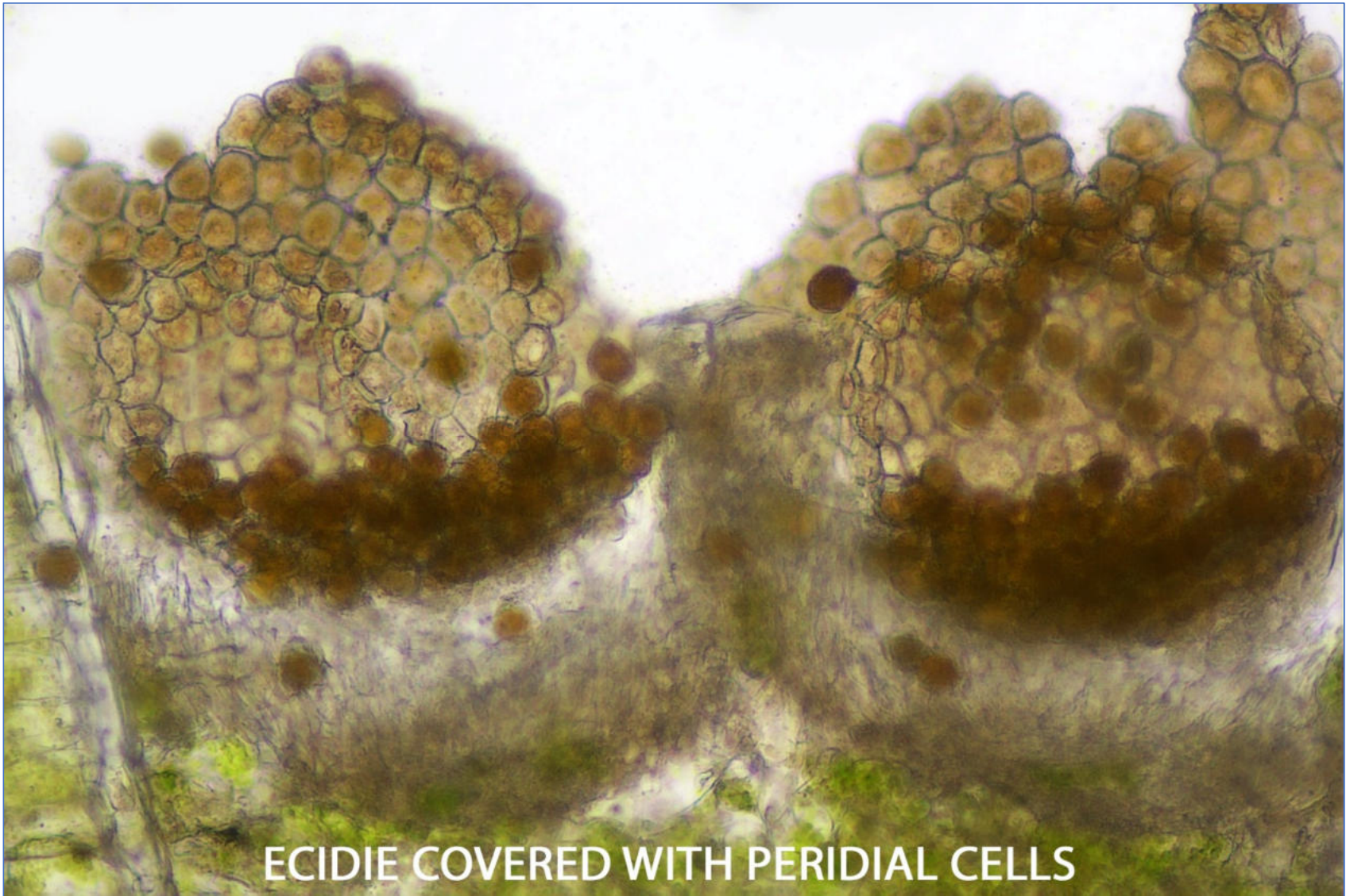
***Aecidium ari* (*Puccinia sessilis*) sur *Arum maculatum***  
Fiche conçue et réalisée par Daniel Deschuyteneer



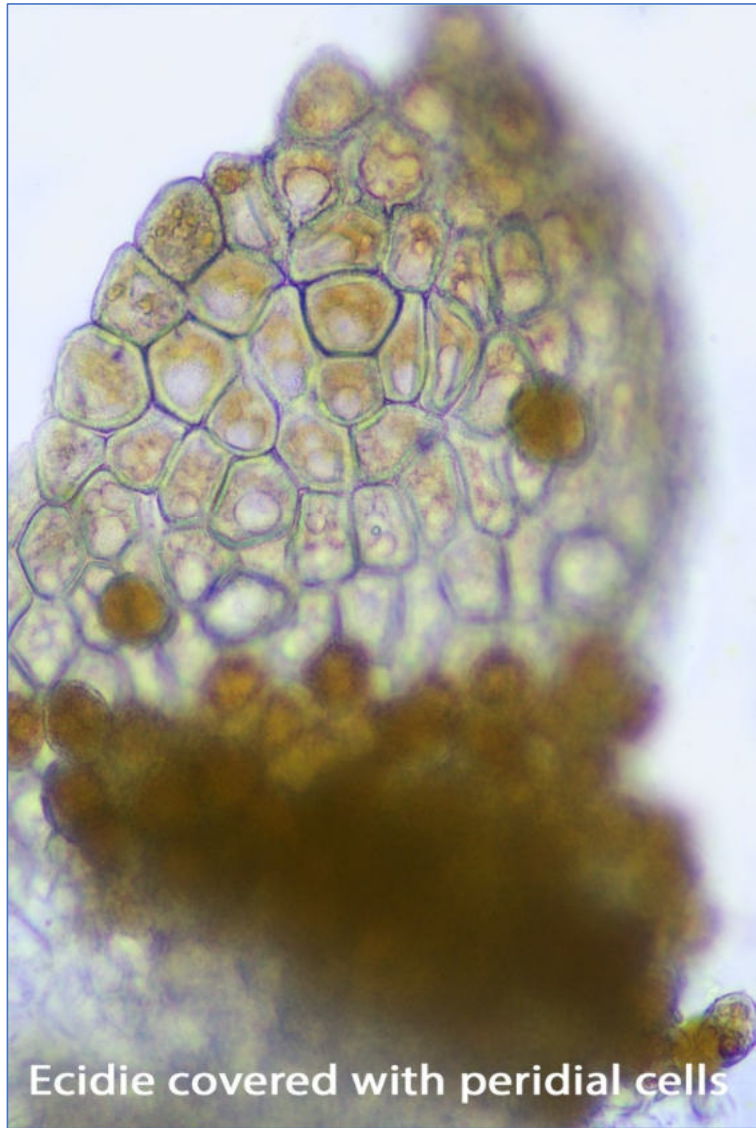




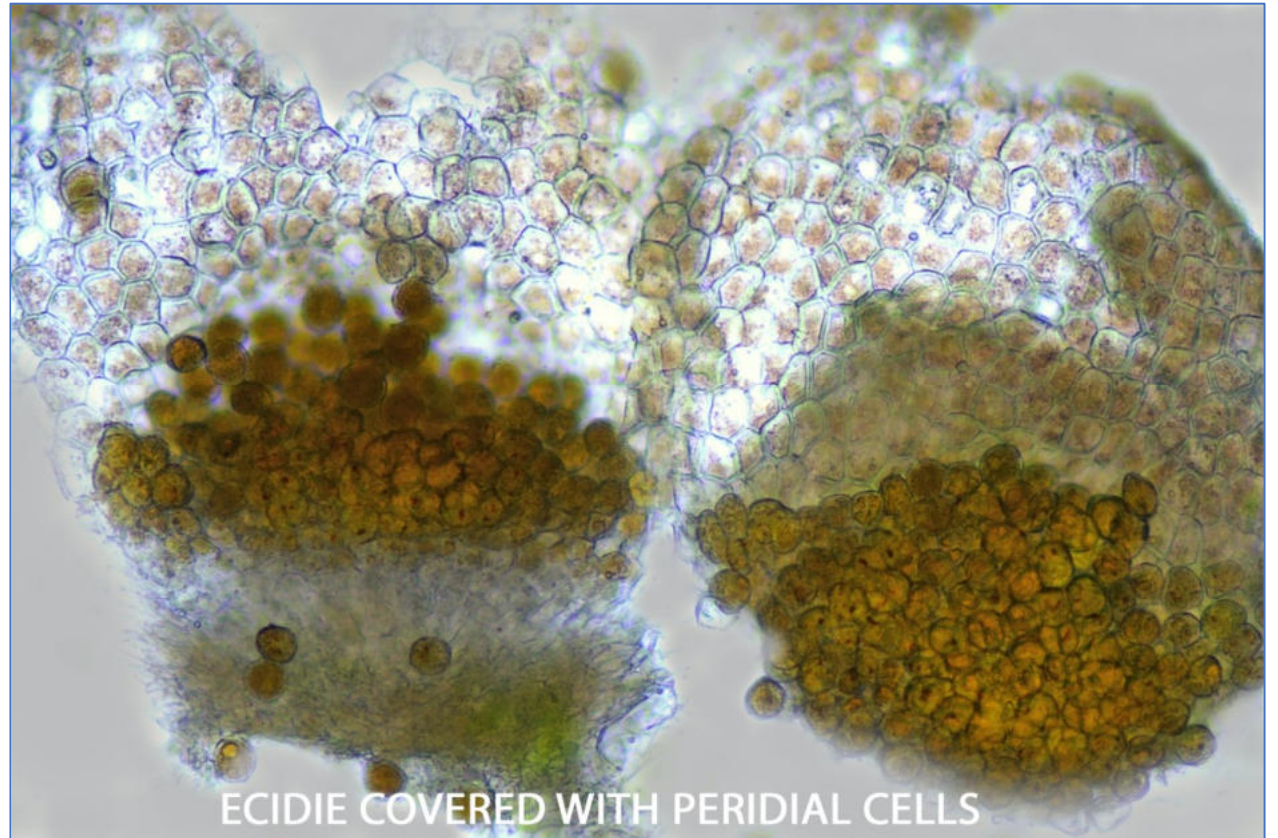




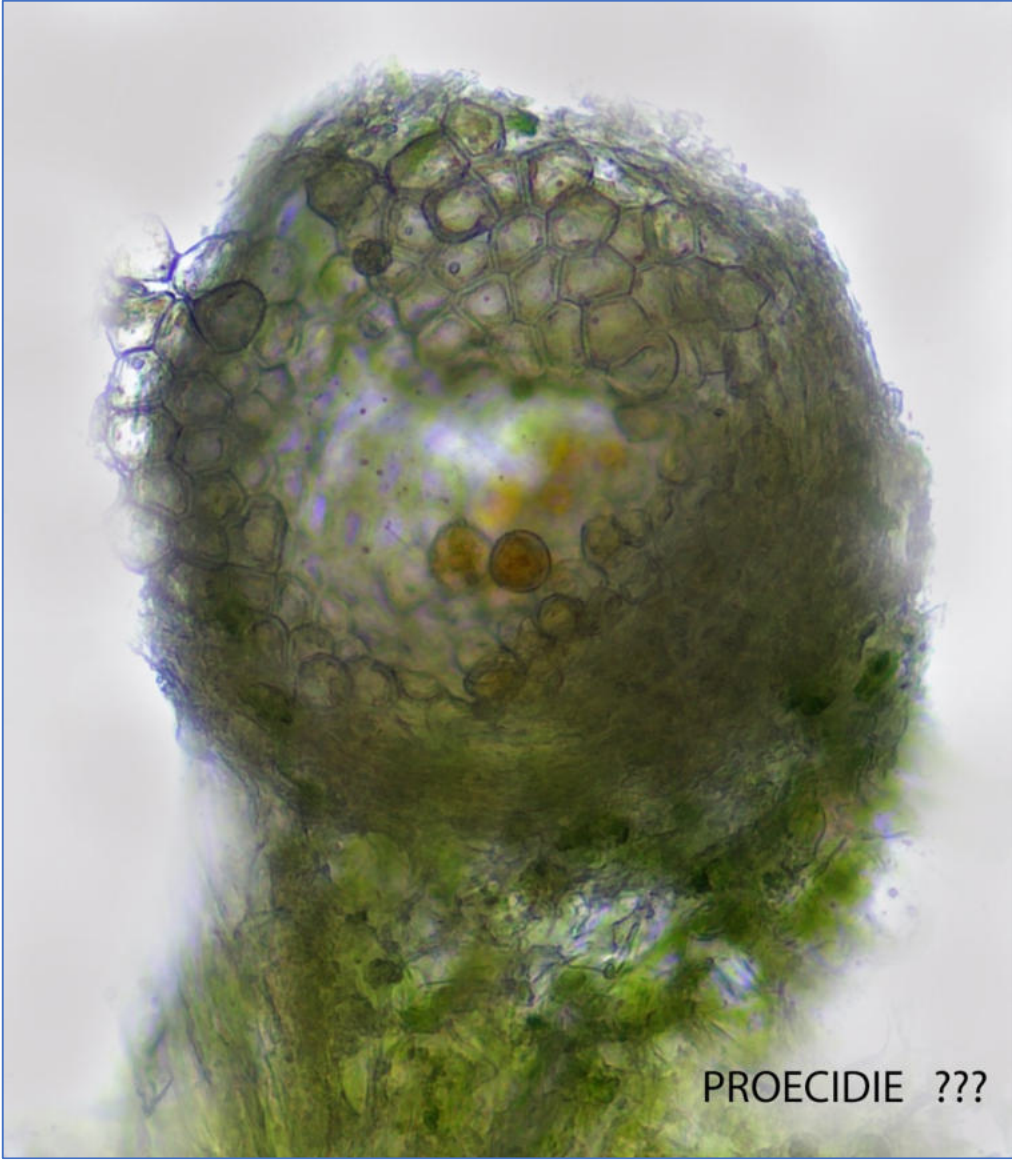
ECIDIE COVERED WITH PERIDIAL CELLS



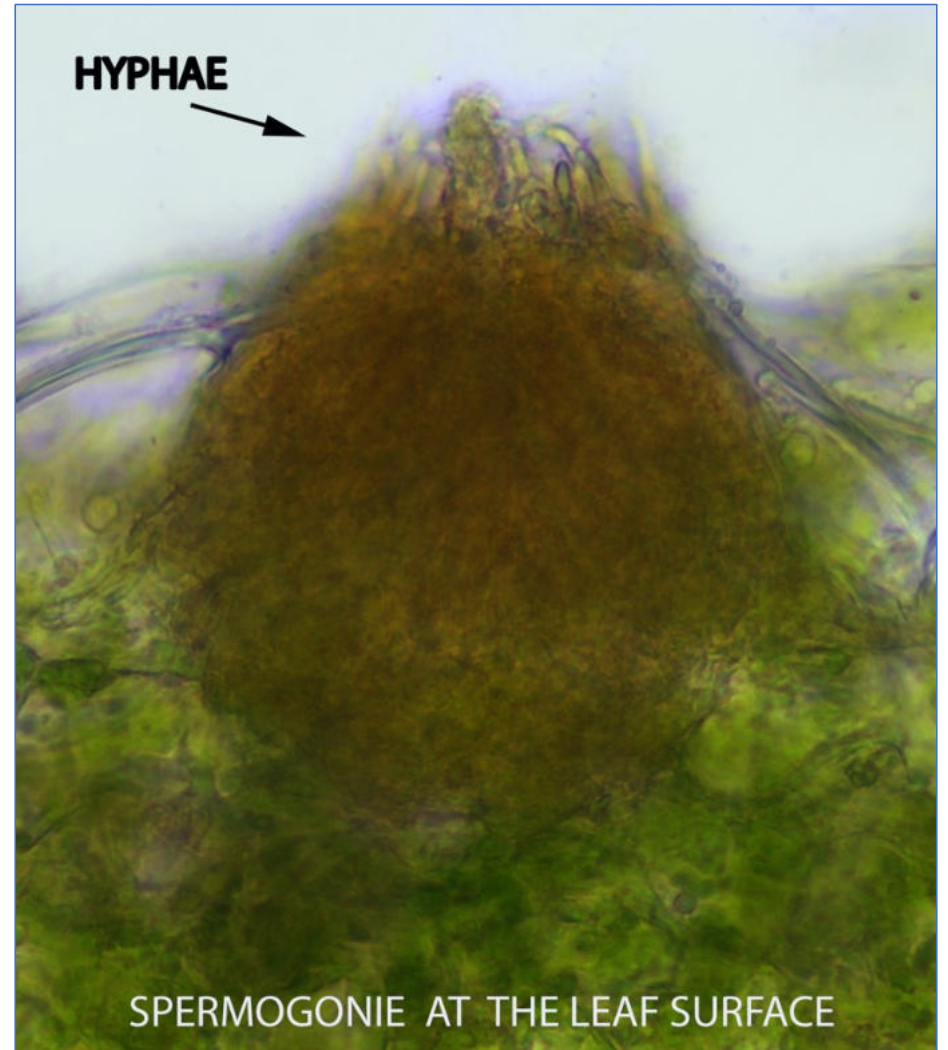
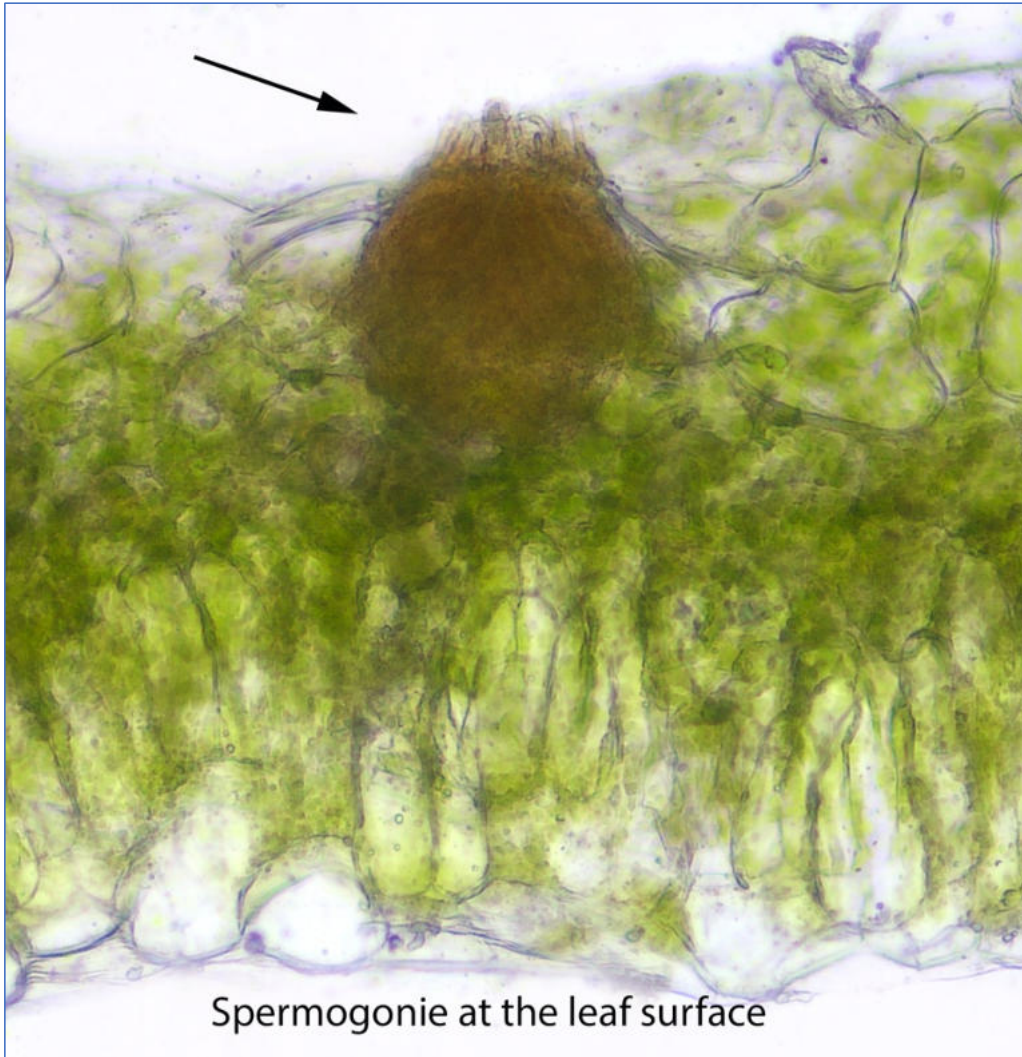
Ecidie covered with peridial cells



ECIDIE COVERED WITH PERIDIAL CELLS



PROECIDIE ???

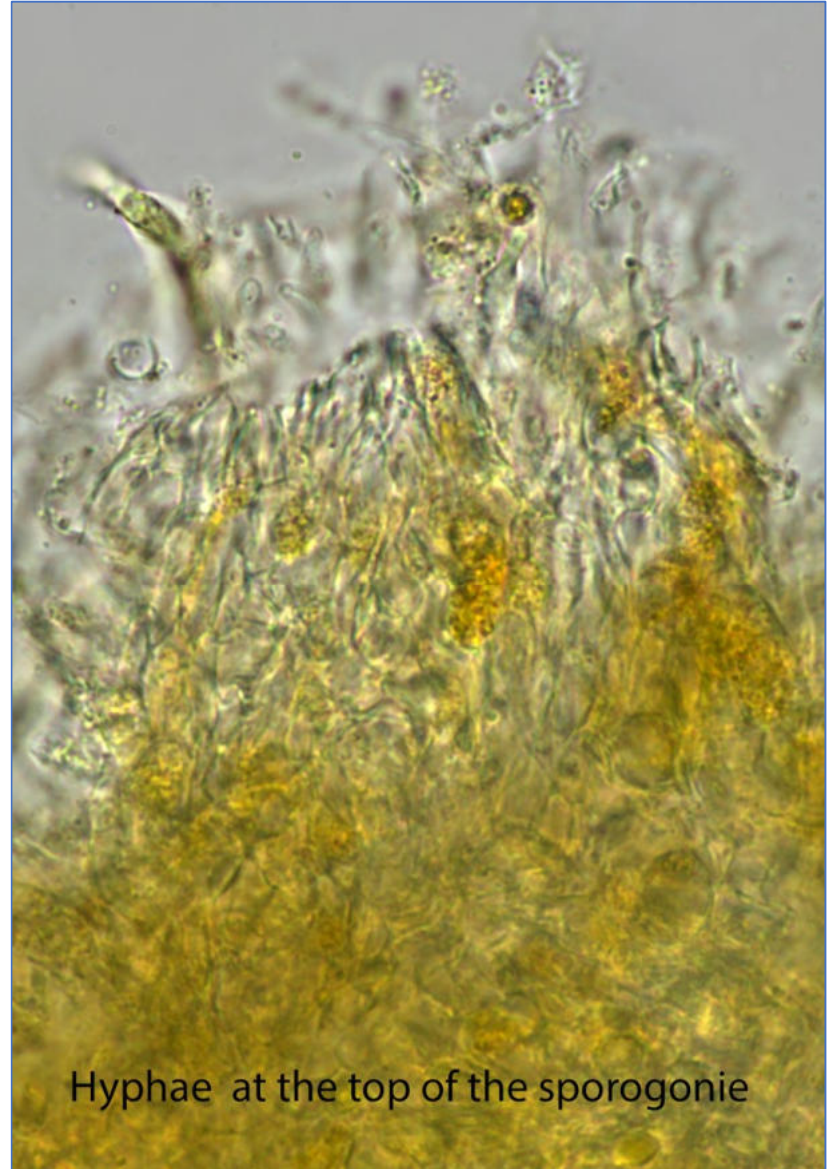




Hyphae at the top of the spermatogonie



HYPHAE AT THE TOP OF THE SPERMOGONIE



Hyphae at the top of the sporogonie