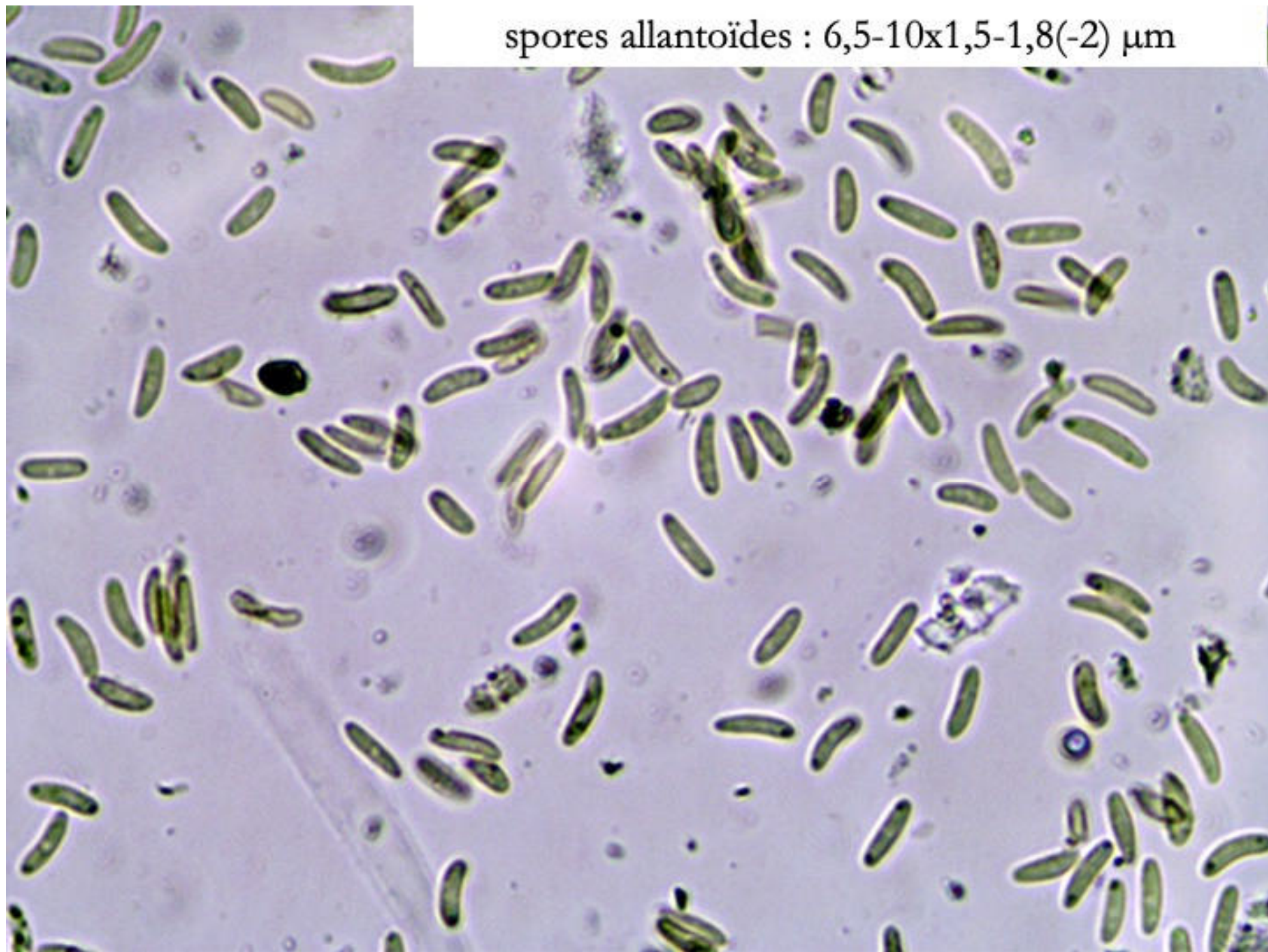
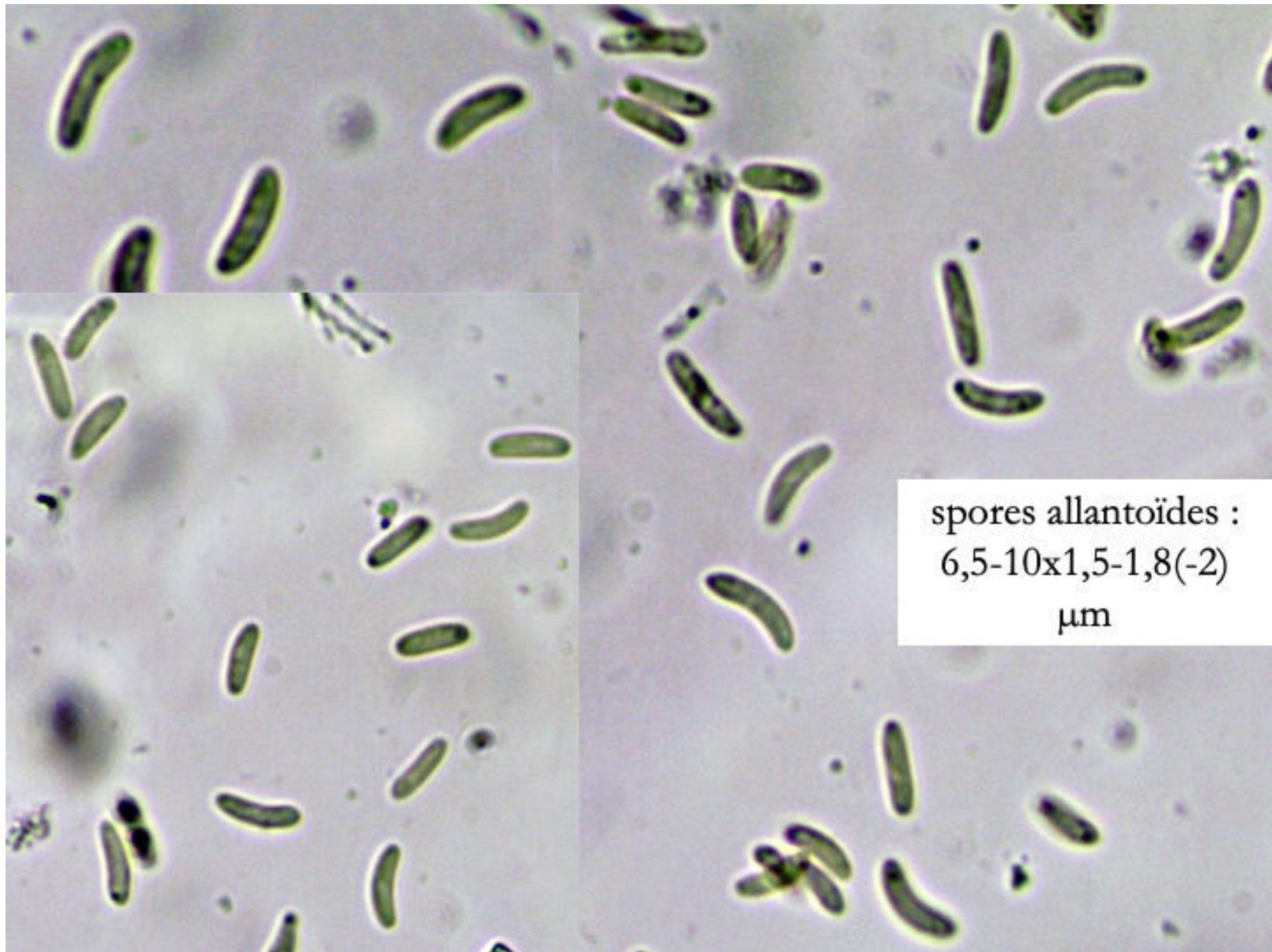


***Eutypa spinosa*** sur chandelle de vieux hêtre, en hêtraie-chênaie acidophile.  
Photos Bernard Clesse – Morteihan, 20/10/2025

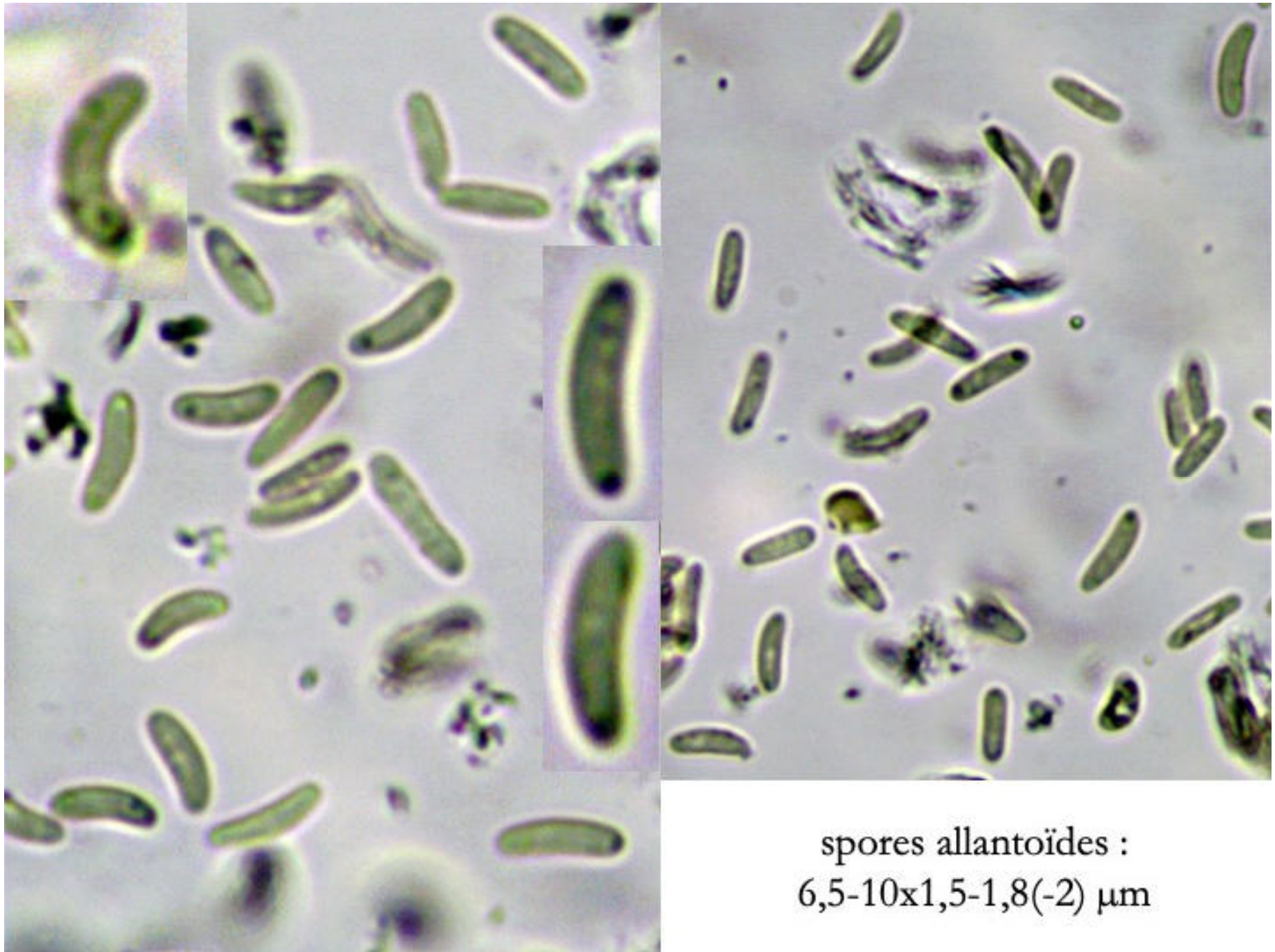


spores allantoides : 6,5-10x1,5-1,8(-2)  $\mu\text{m}$





spores allantoïdes :  
6,5-10x1,5-1,8(-2)  
µm



spores allantoïdes :  
6,5-10x1,5-1,8(-2)  $\mu\text{m}$