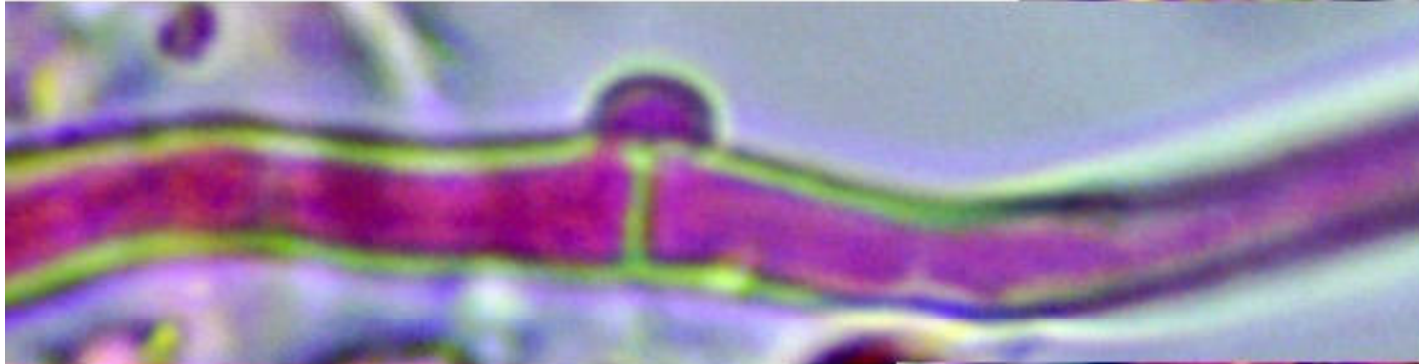
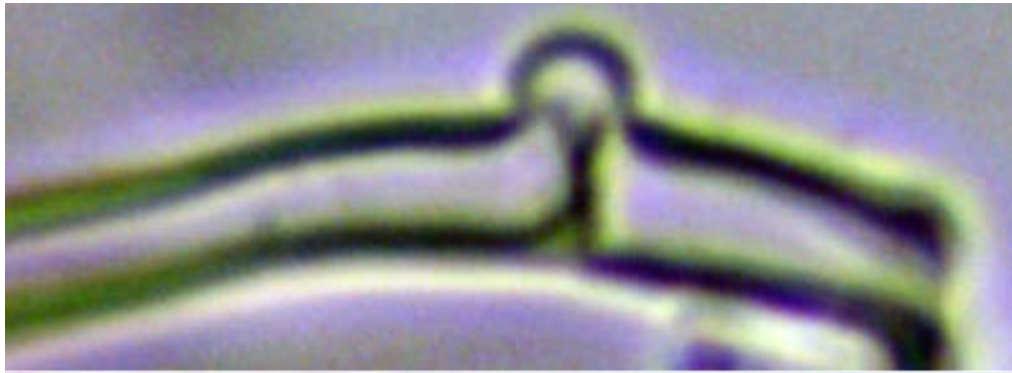


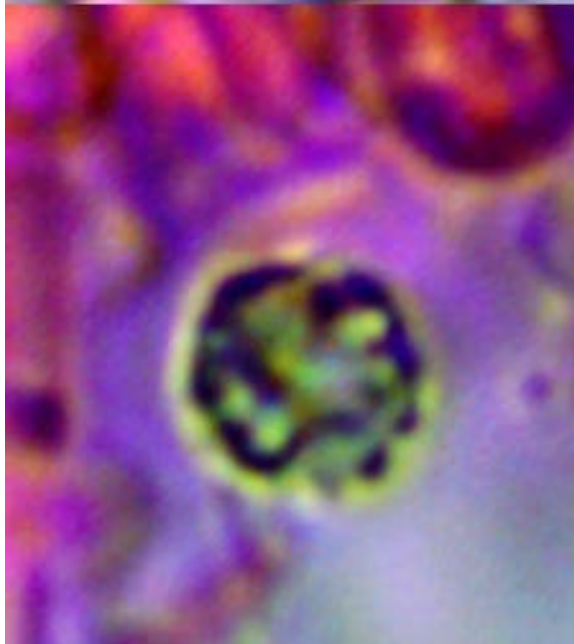
Xylodon nespori sur tronc mort d'épicéa.
Photos Bernard Clesse – Morteihan, 20/10/2025



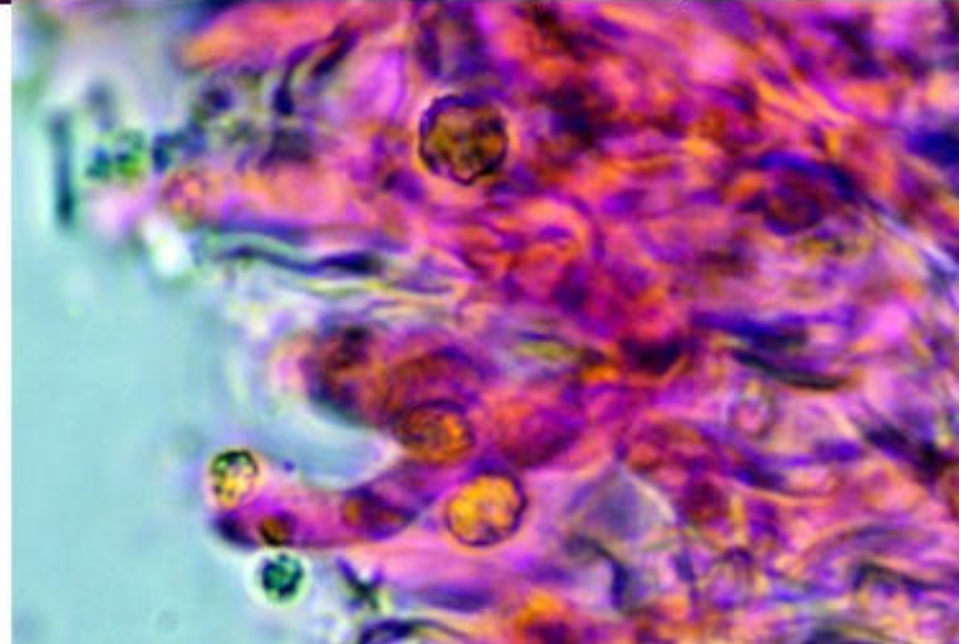


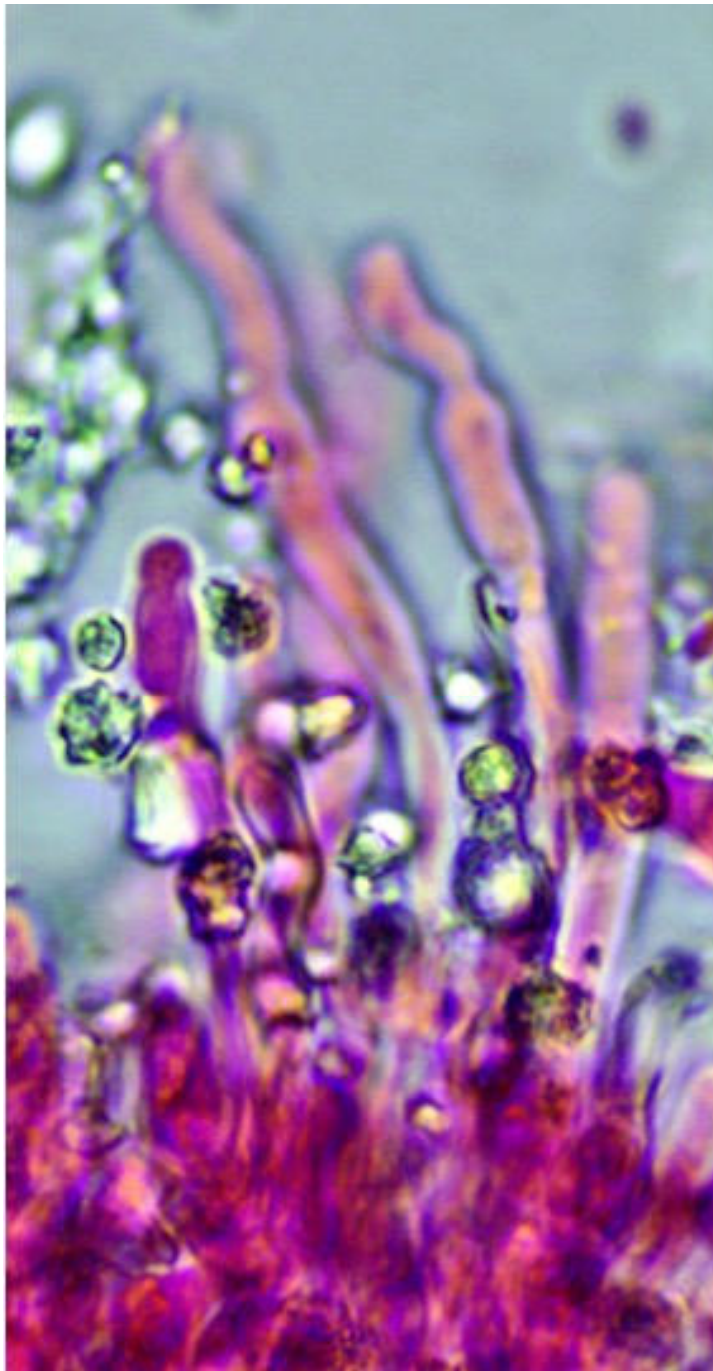


monomitique,
hyphes
bouclées, à
parois un peu
épaissies

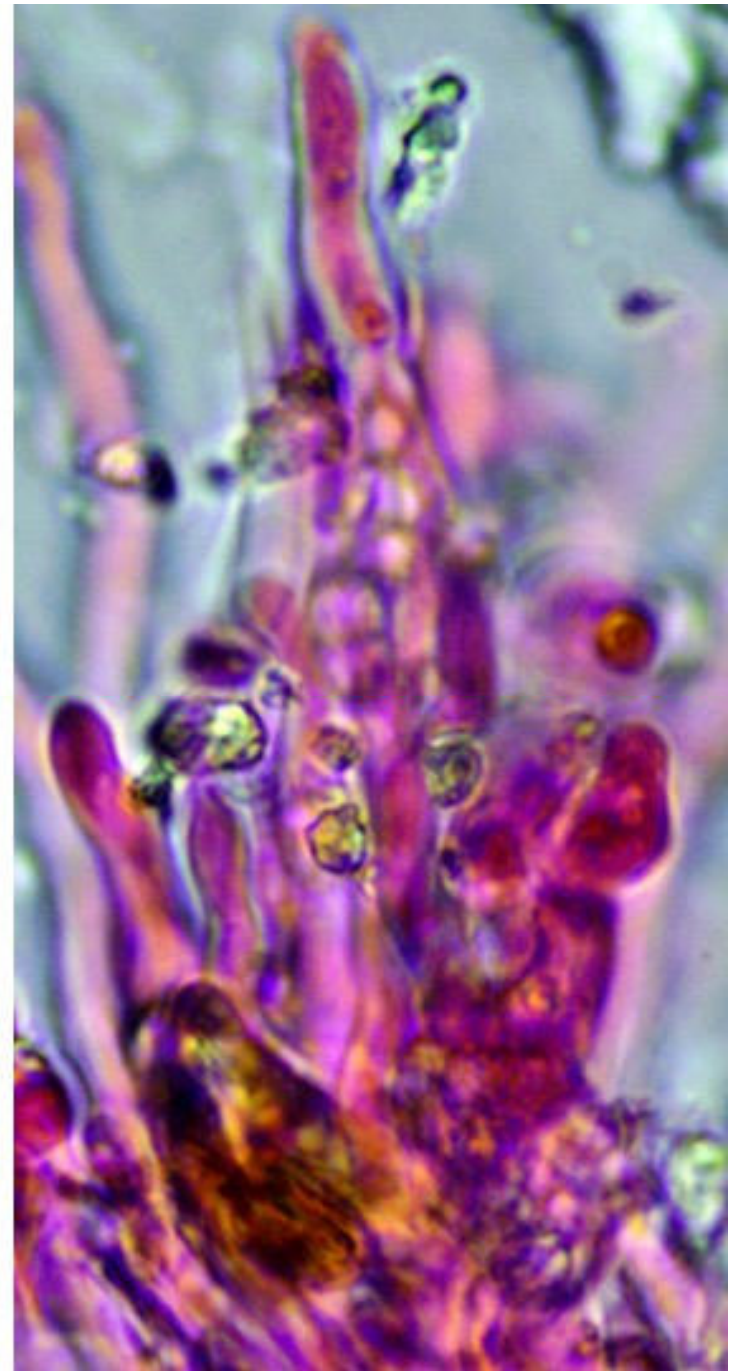


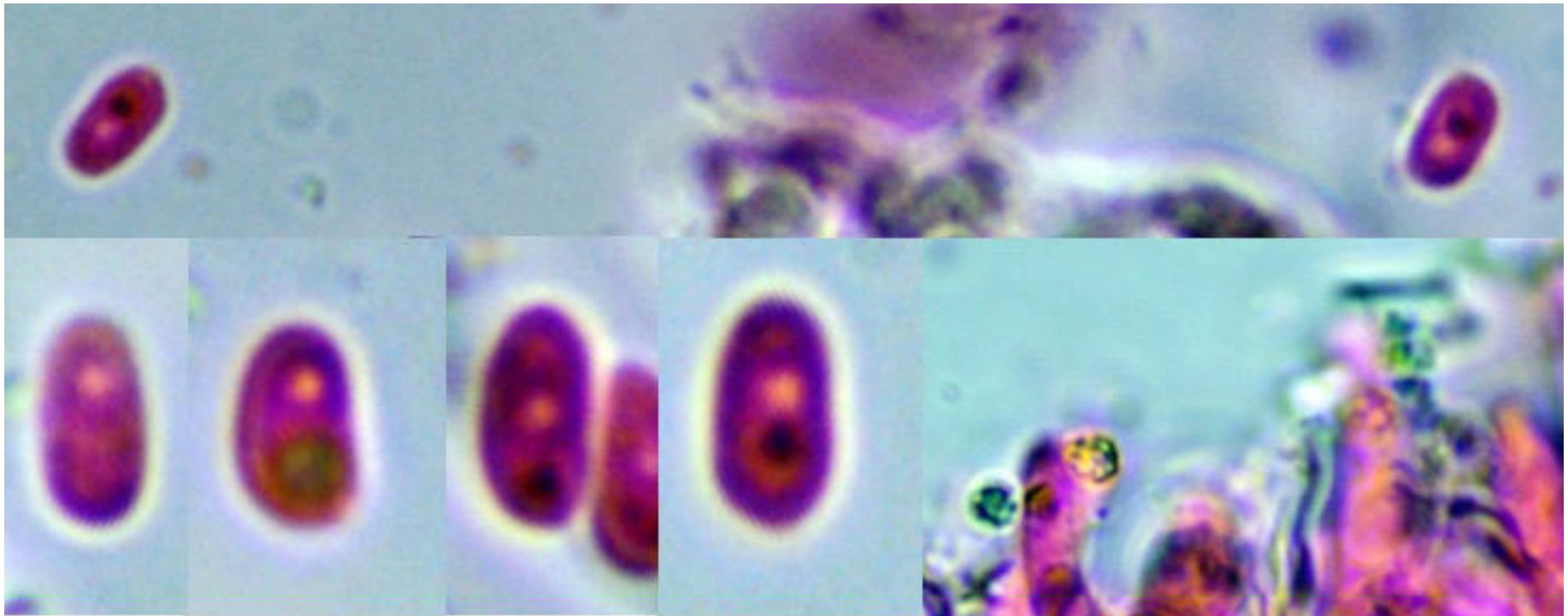
cristaux en
rosaces
arrondies





cristaux en
rosaces
arrondies,
parmi les
hyphes des
aiguillons





spores cylindriques : 4-5x2-2,5 μm

cristaux en rosaces
arrondies parmi les
hyphes des aiguillons

