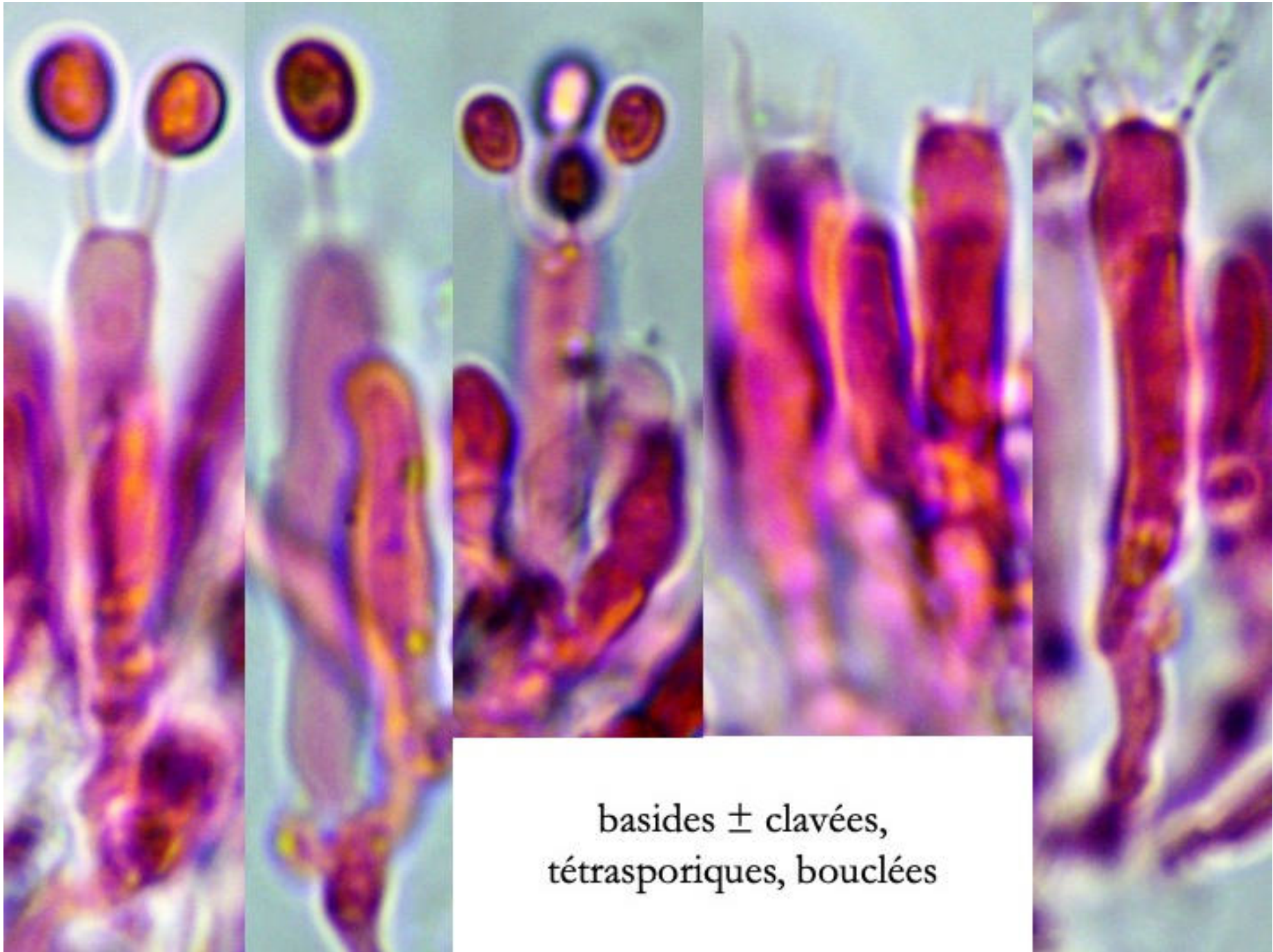


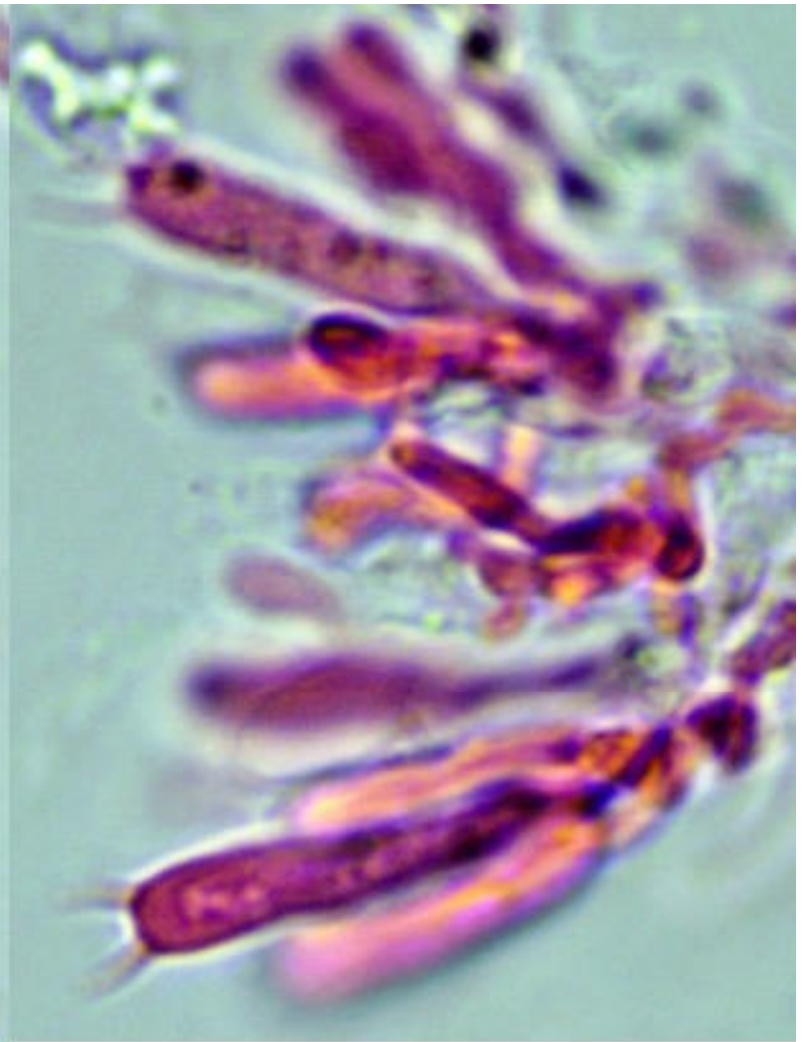
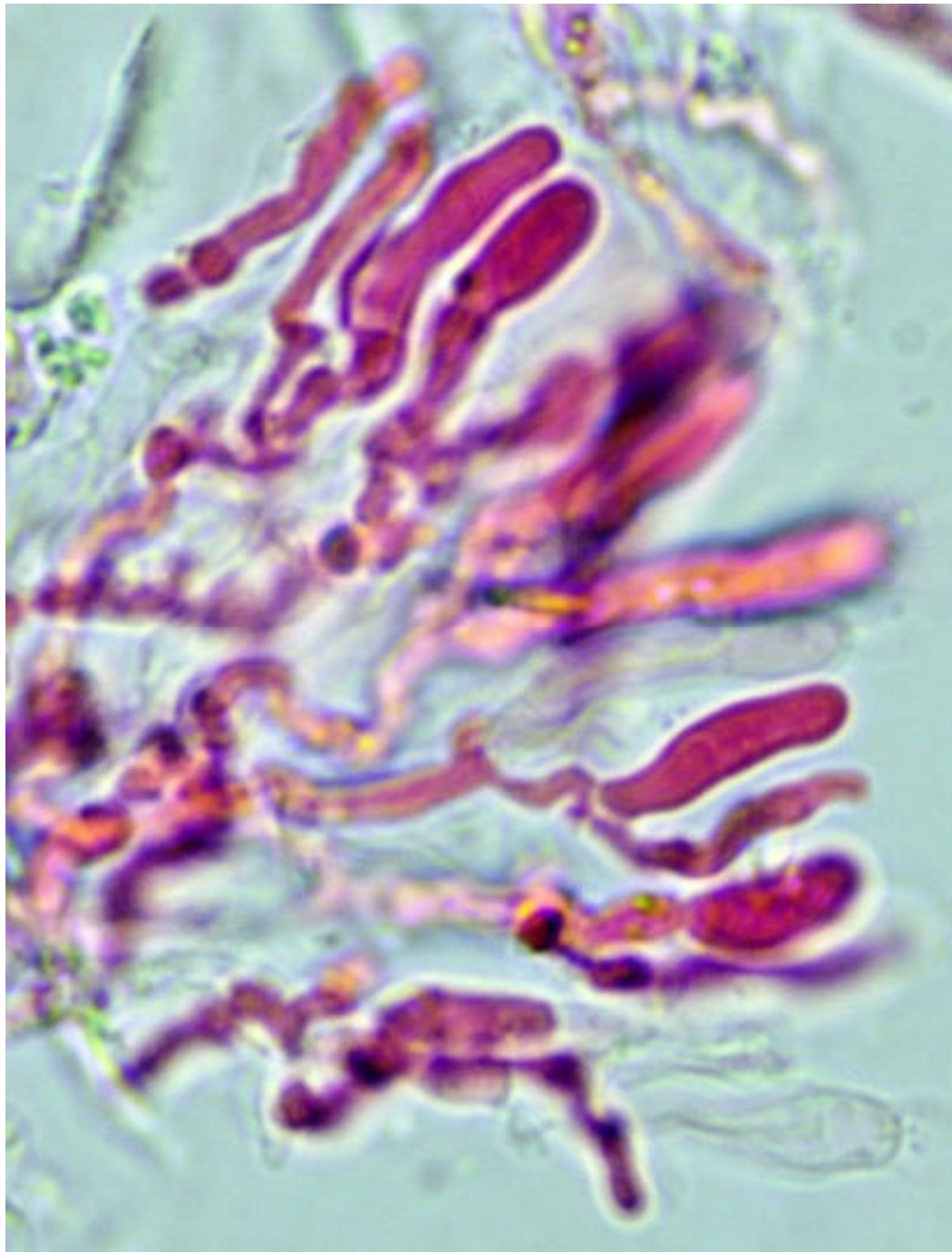
Gloeocystidiellum clavuligerum sur branchette morte de hêtre
Photos Bernard Clesse – Herbeumont (Sainte-Cécile), 22/10/2025



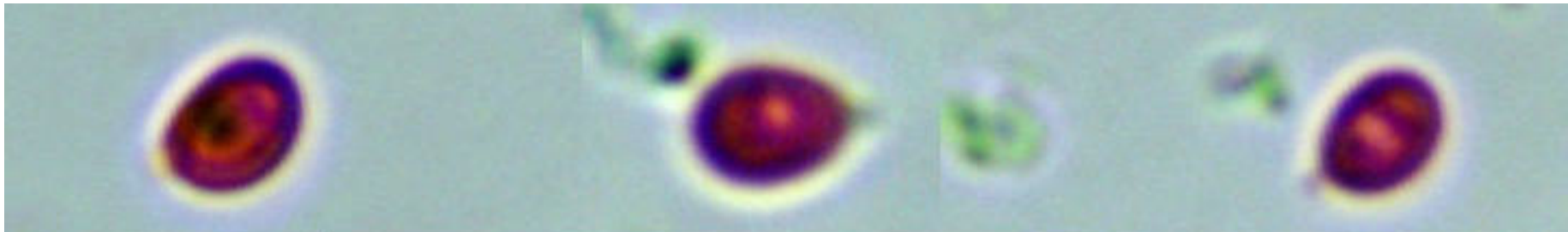




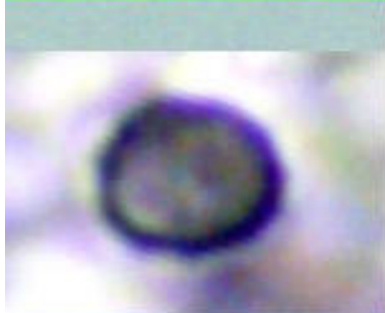
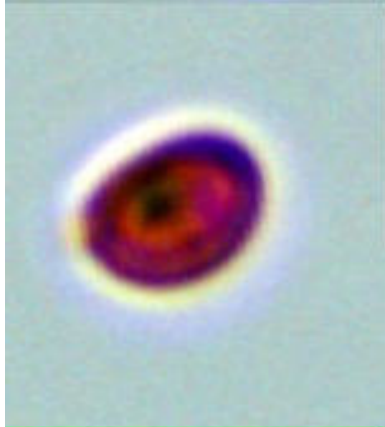
basides \pm clavées,
tétrasporiques, bouclées



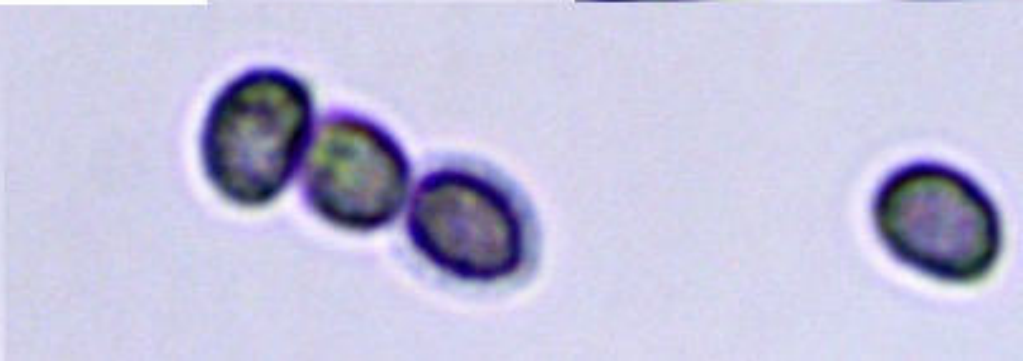
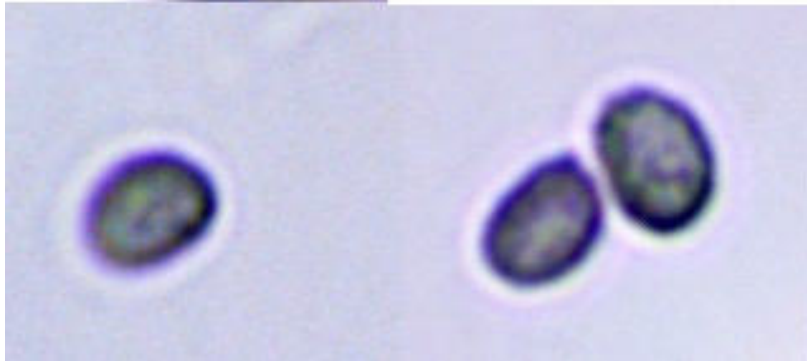
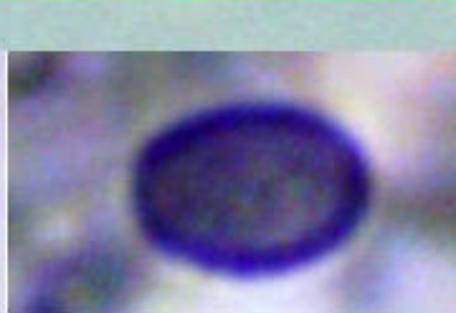
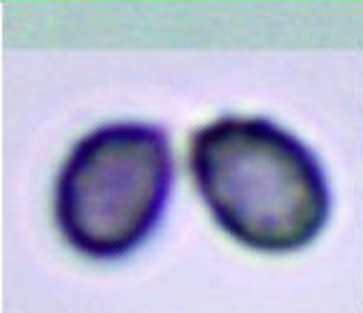
basides \pm clavées,
tétrasporiques

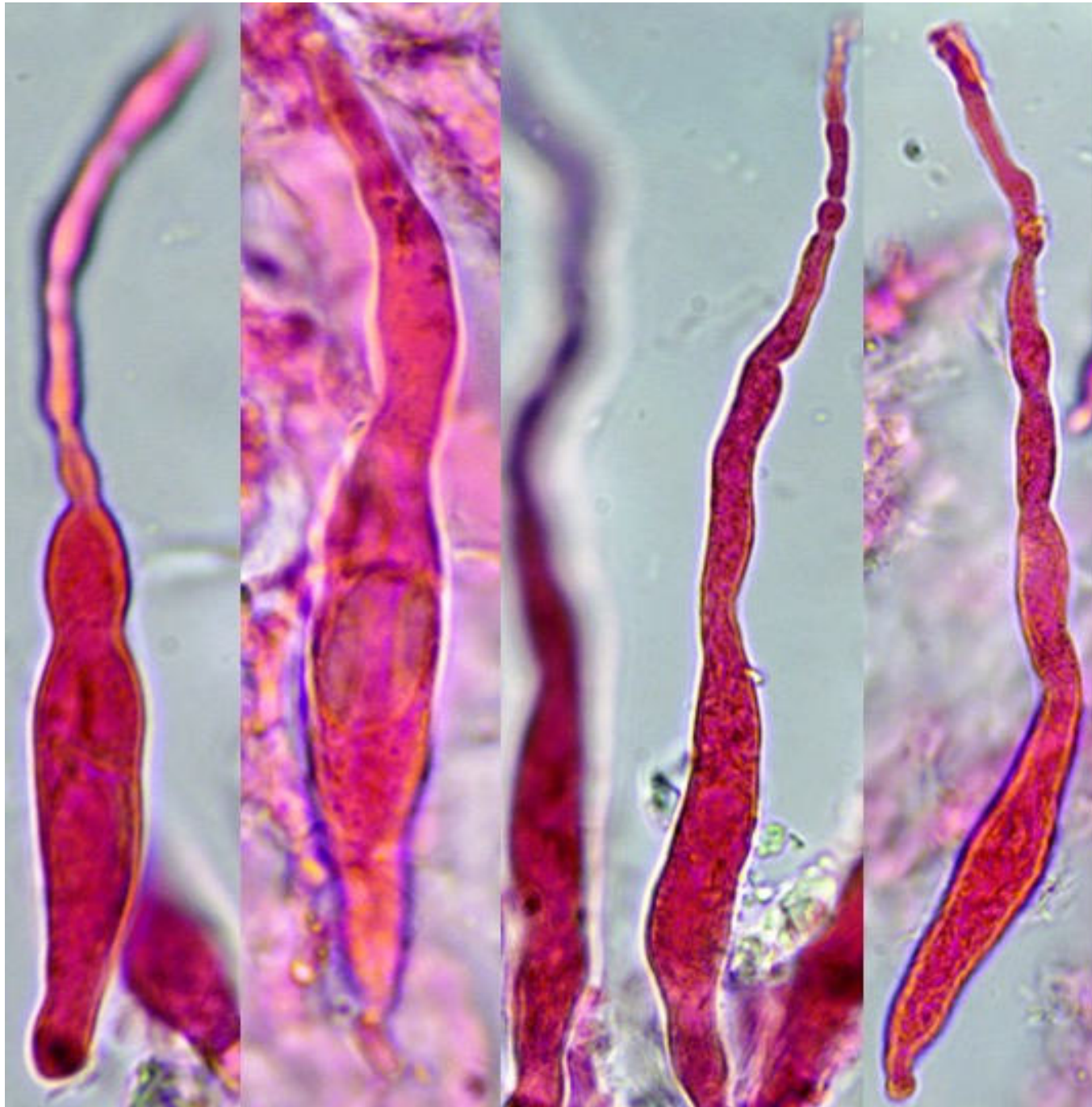


spores ellipsoïdes-subglobuleuses à ovoïdes, à ornementation non visible dans KOH + phloxine : 3-4x2,2-3 µm



spores fortement amyloïdes, courtement ornementées dans le Melzer



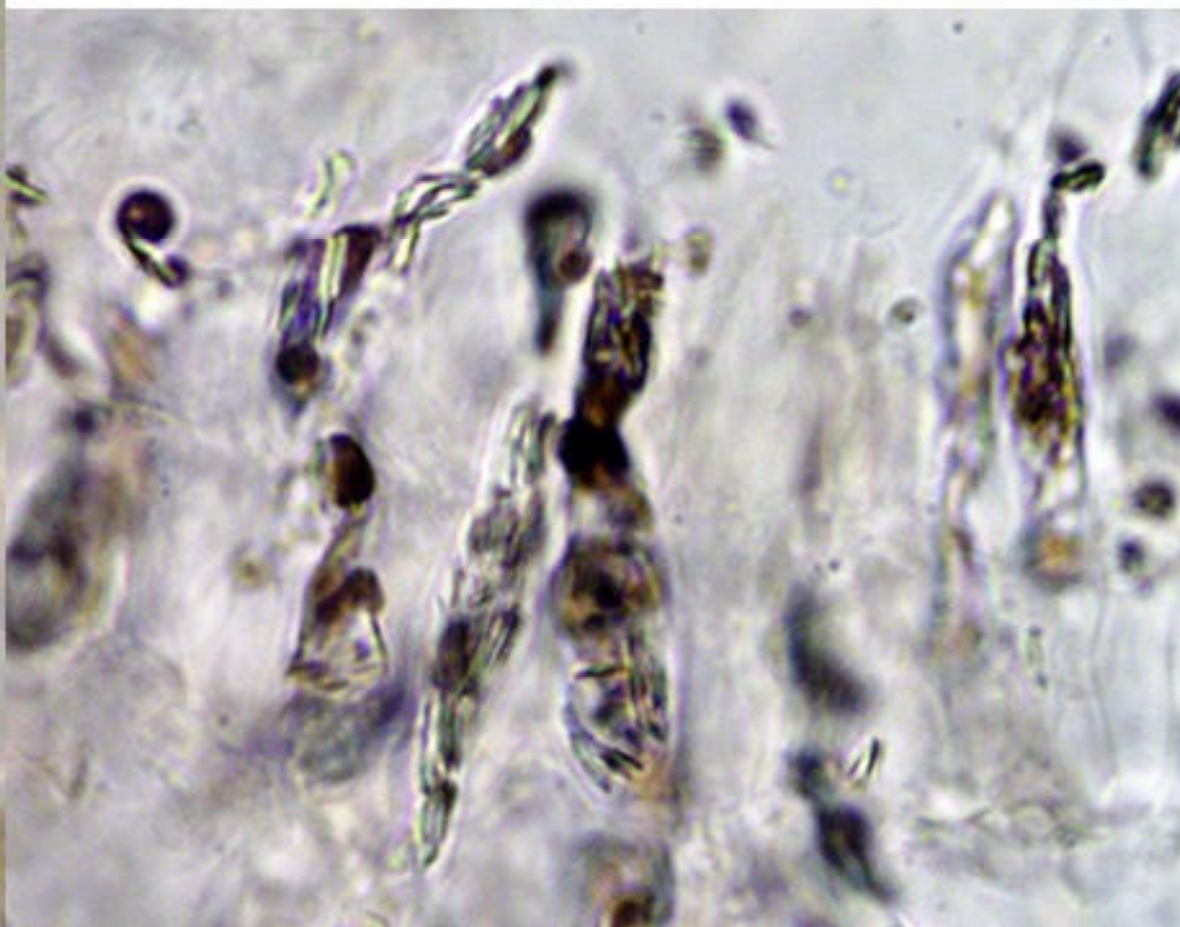


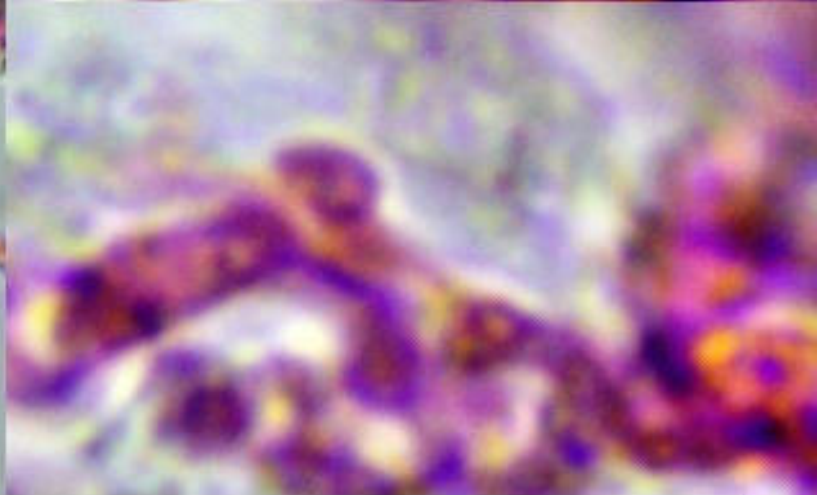
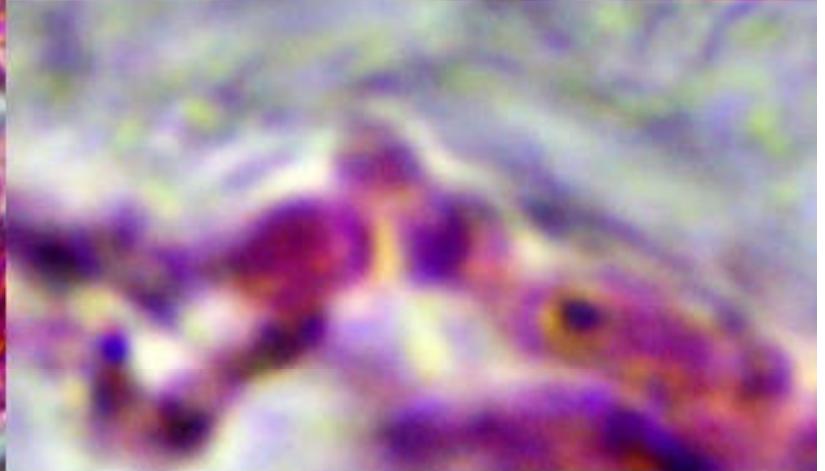
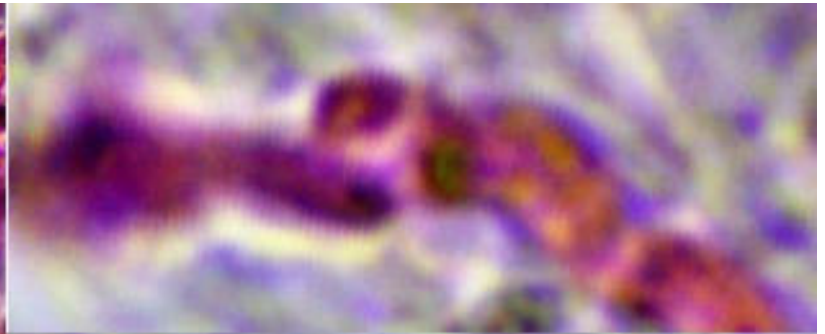
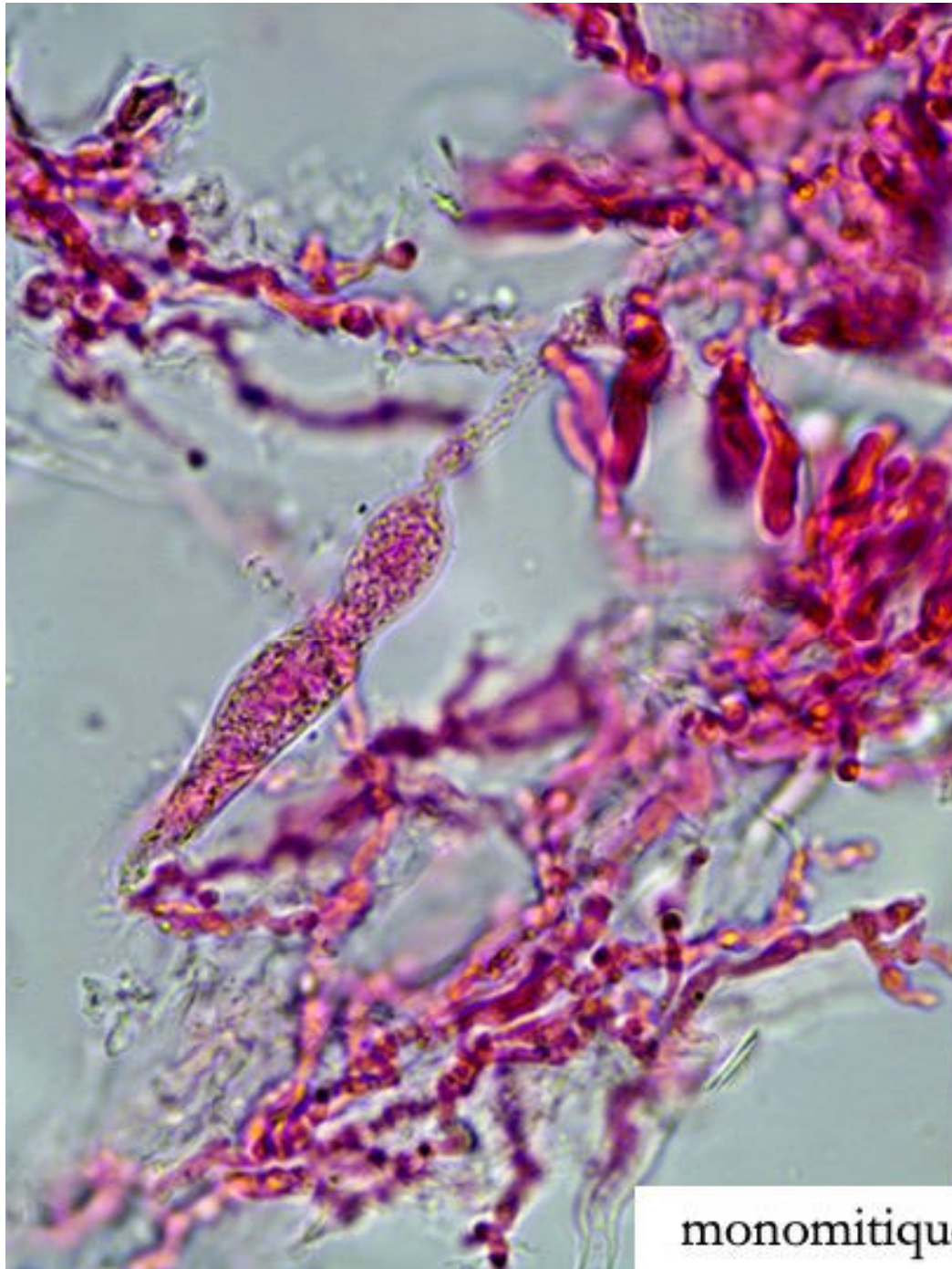
gloeocystides
fusiformes à long
bec flexueux-
étranglé :
80-116x7-8 μm

gloécystides fusiformes à long bec
flexueux-étranglé :
80-116x7-8 μm



gloécystides SV+





monomitique, hyphes bouclées, noueuses