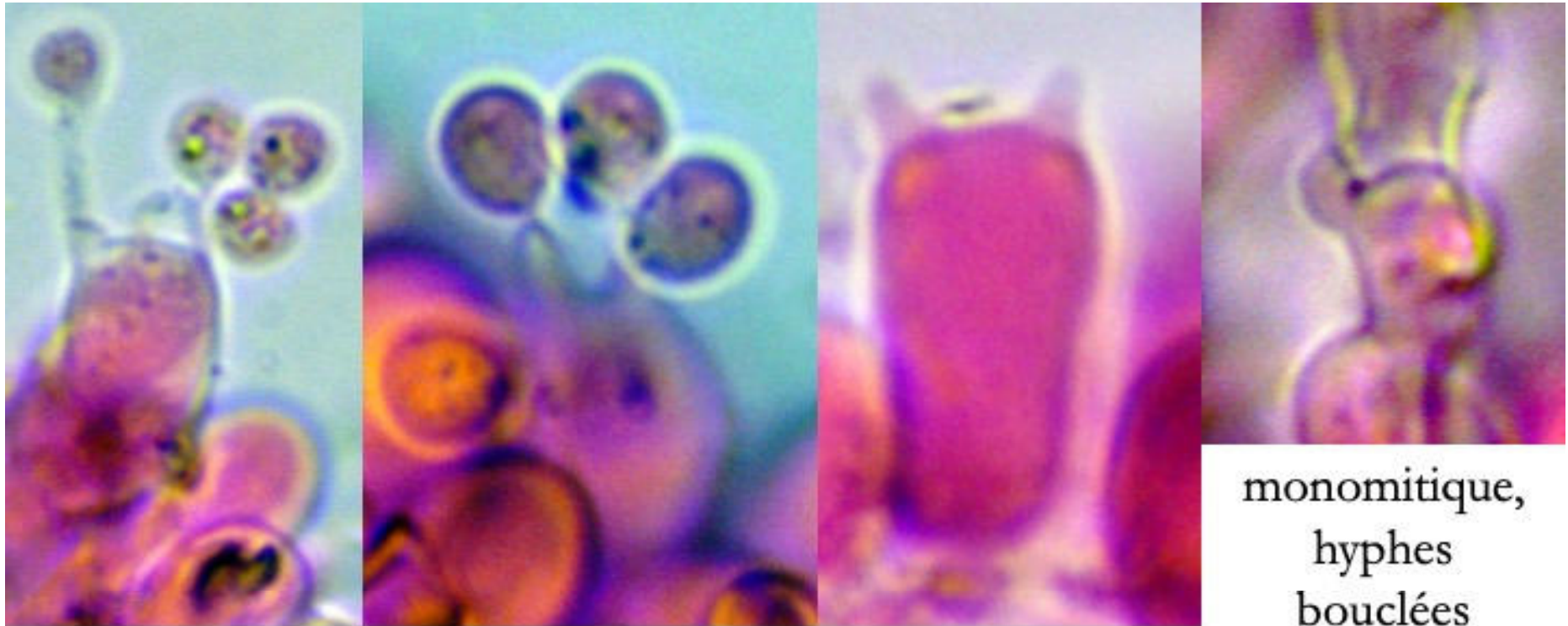


Brevicellicium olivascens sur branchette morte de chêne.

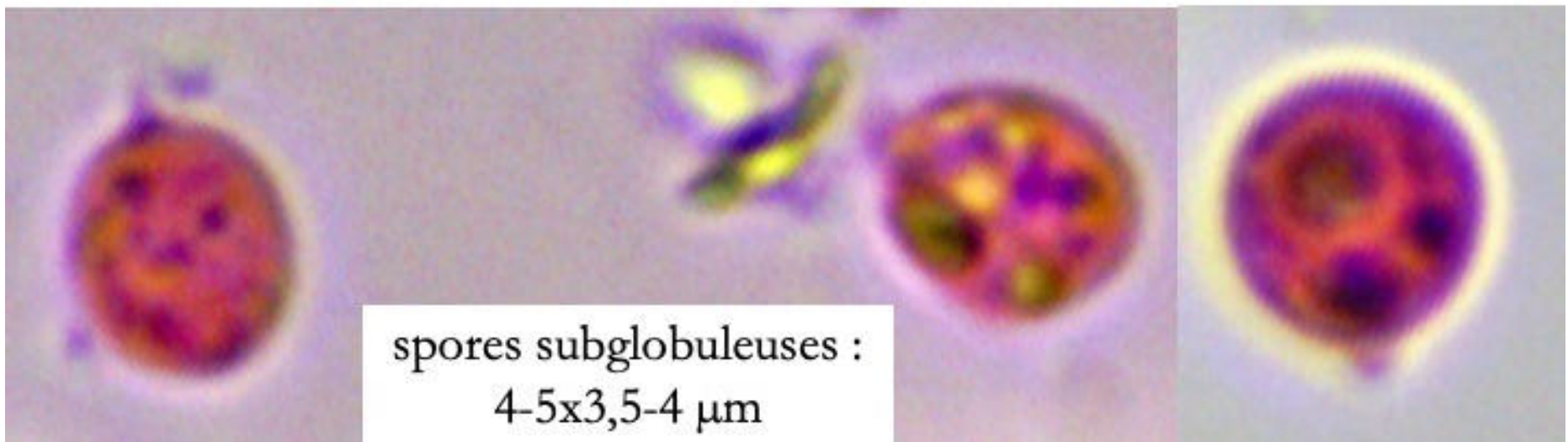
Photos Bernard Clesse – Herbeumont, 21/10/2025



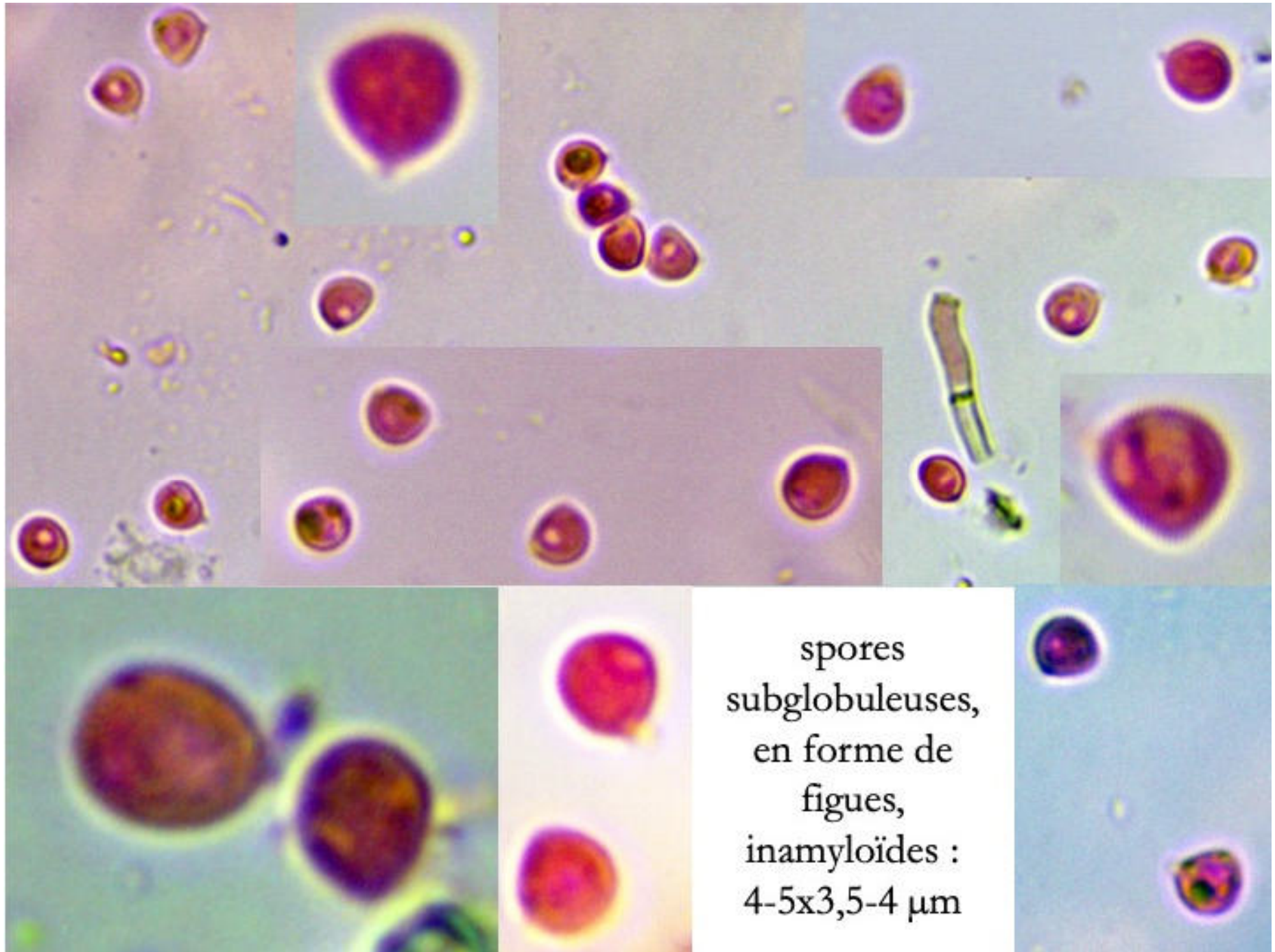


monomitique,
hyphes
bouclées

basides trapues, tétrasporiques : $10 \times 5 \mu\text{m}$



spores subglobuleuses :
 $4-5 \times 3,5-4 \mu\text{m}$



spores
subglobuleuses,
en forme de
figes,
inamyloïdes :
4-5x3,5-4 μm