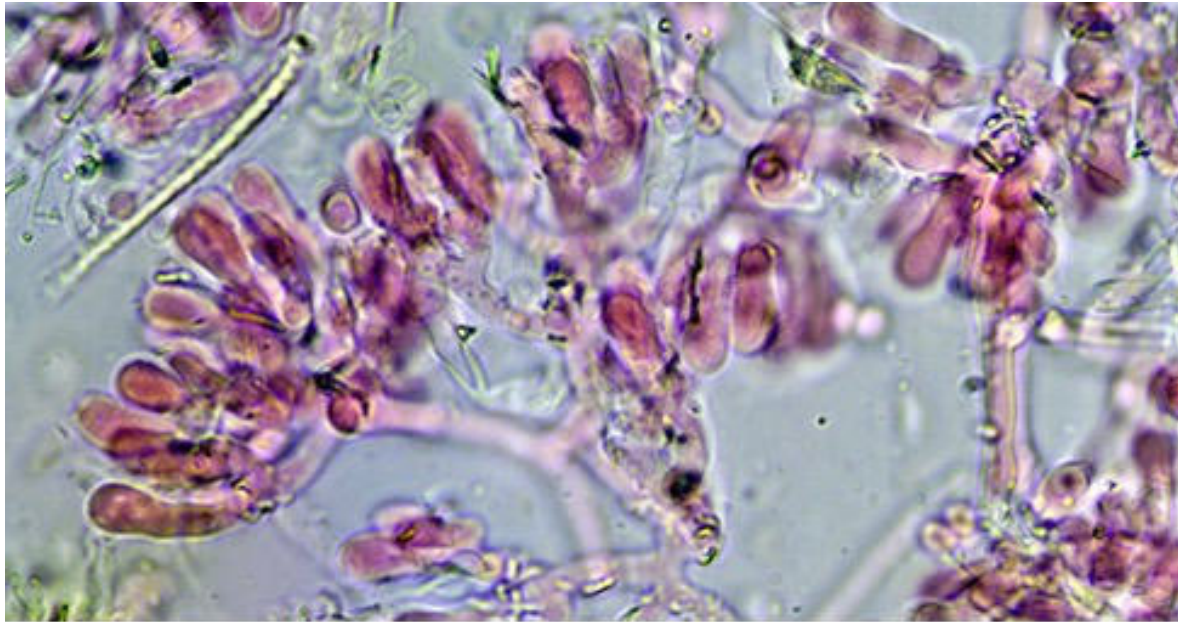
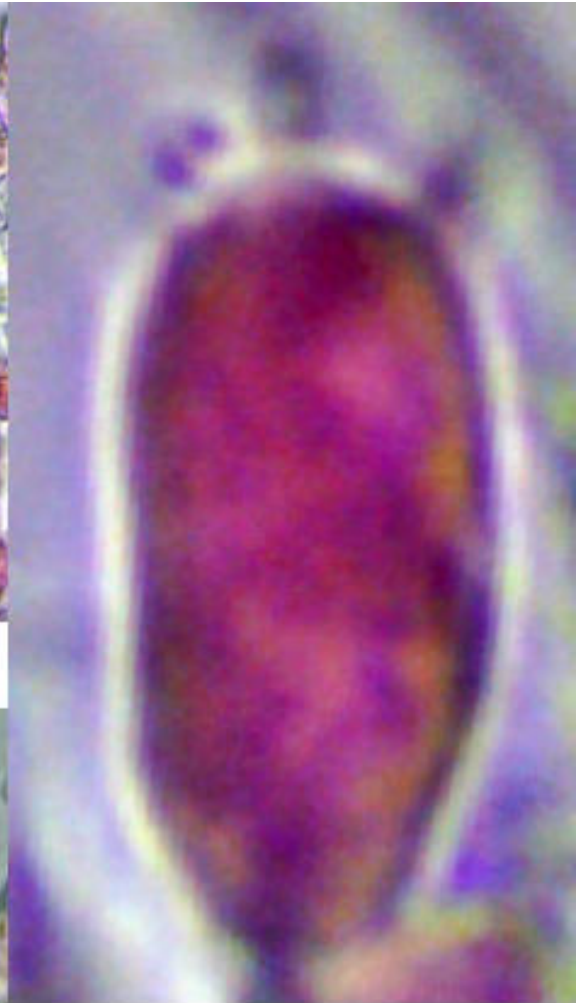
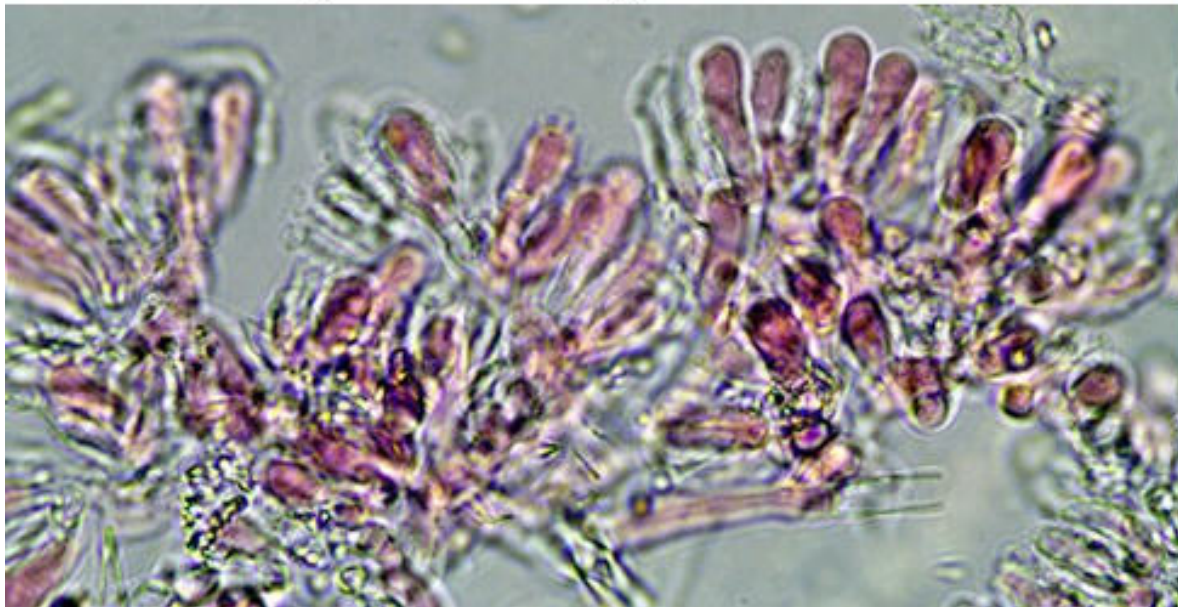


Athelia decipiens sur branche morte de chêne.. Photos Bernard Clesse – Herbeumont
21/10/2025

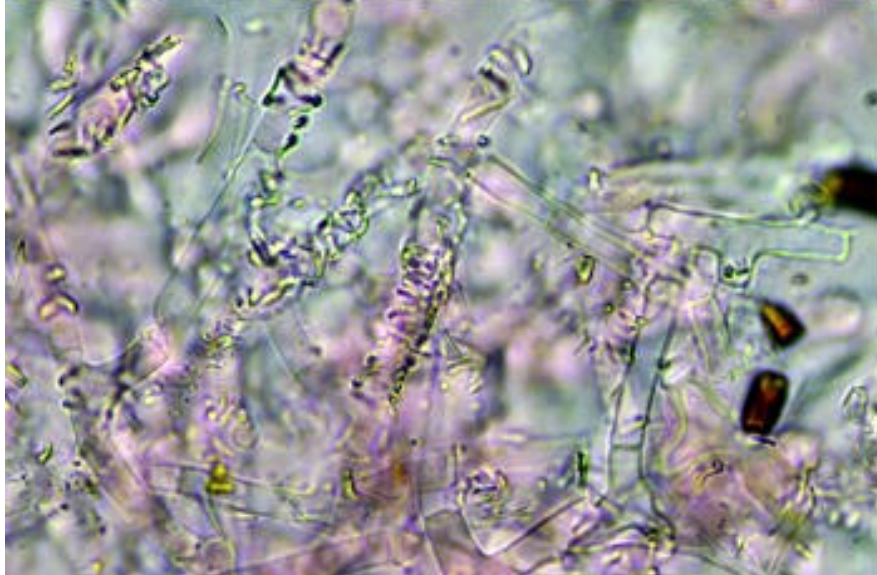
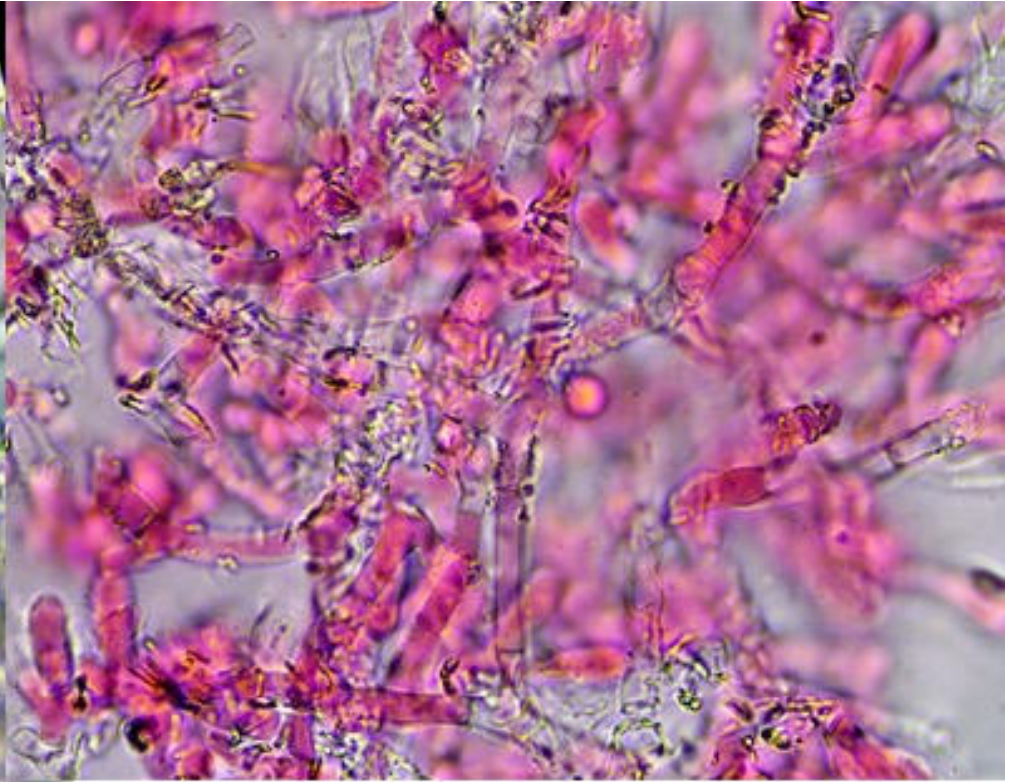
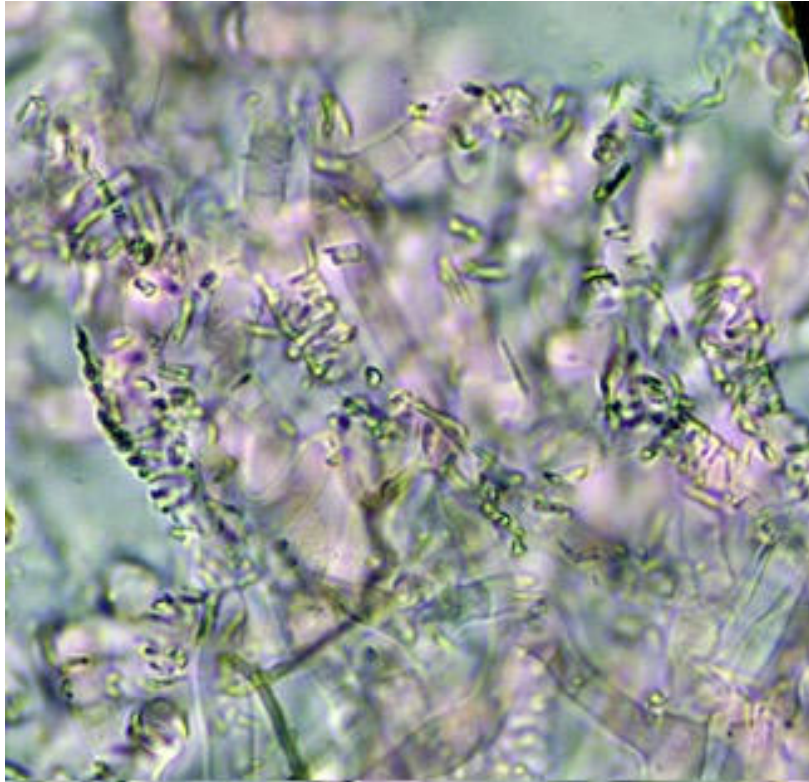




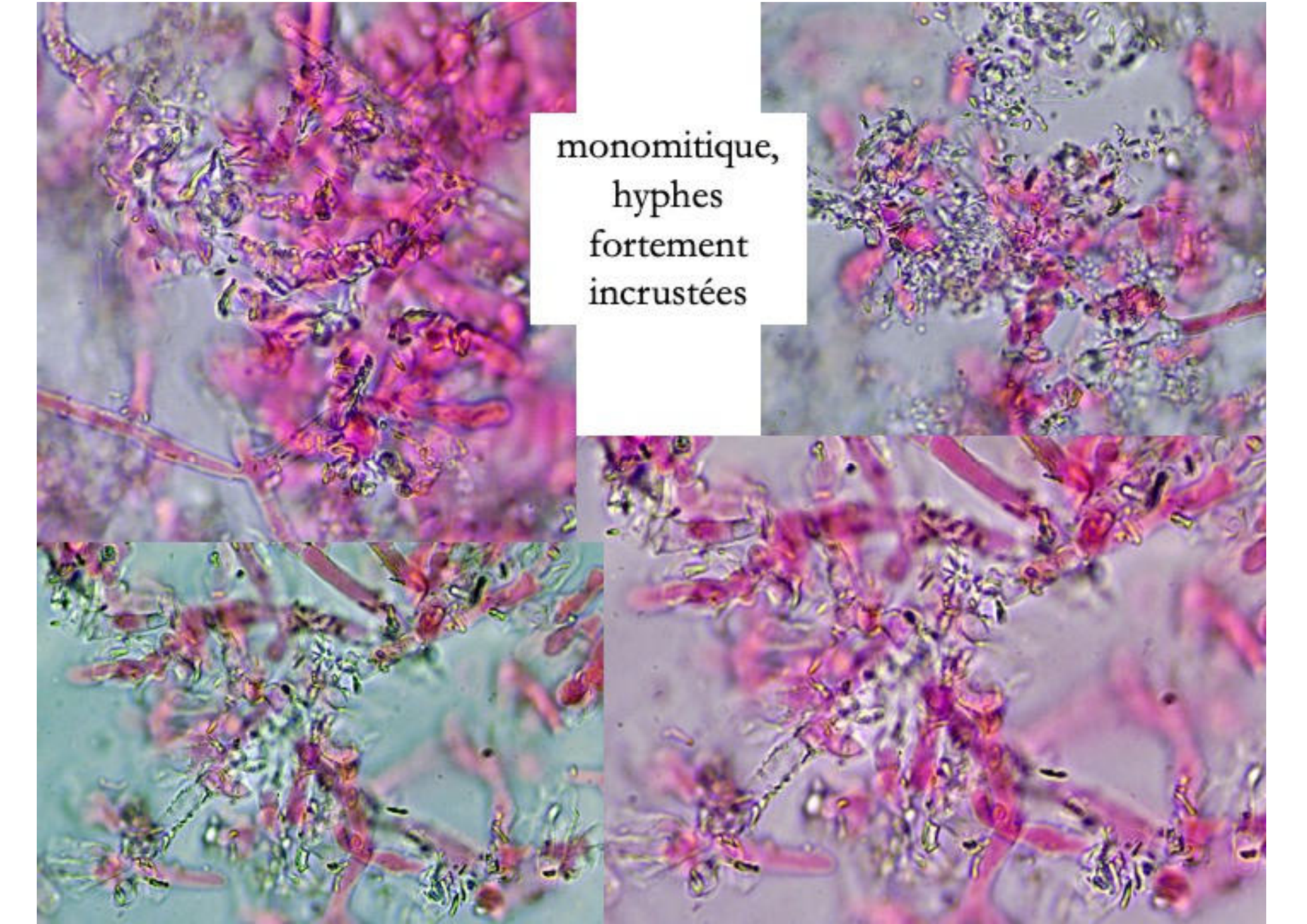
basides disposées en corymbes ou candélabres



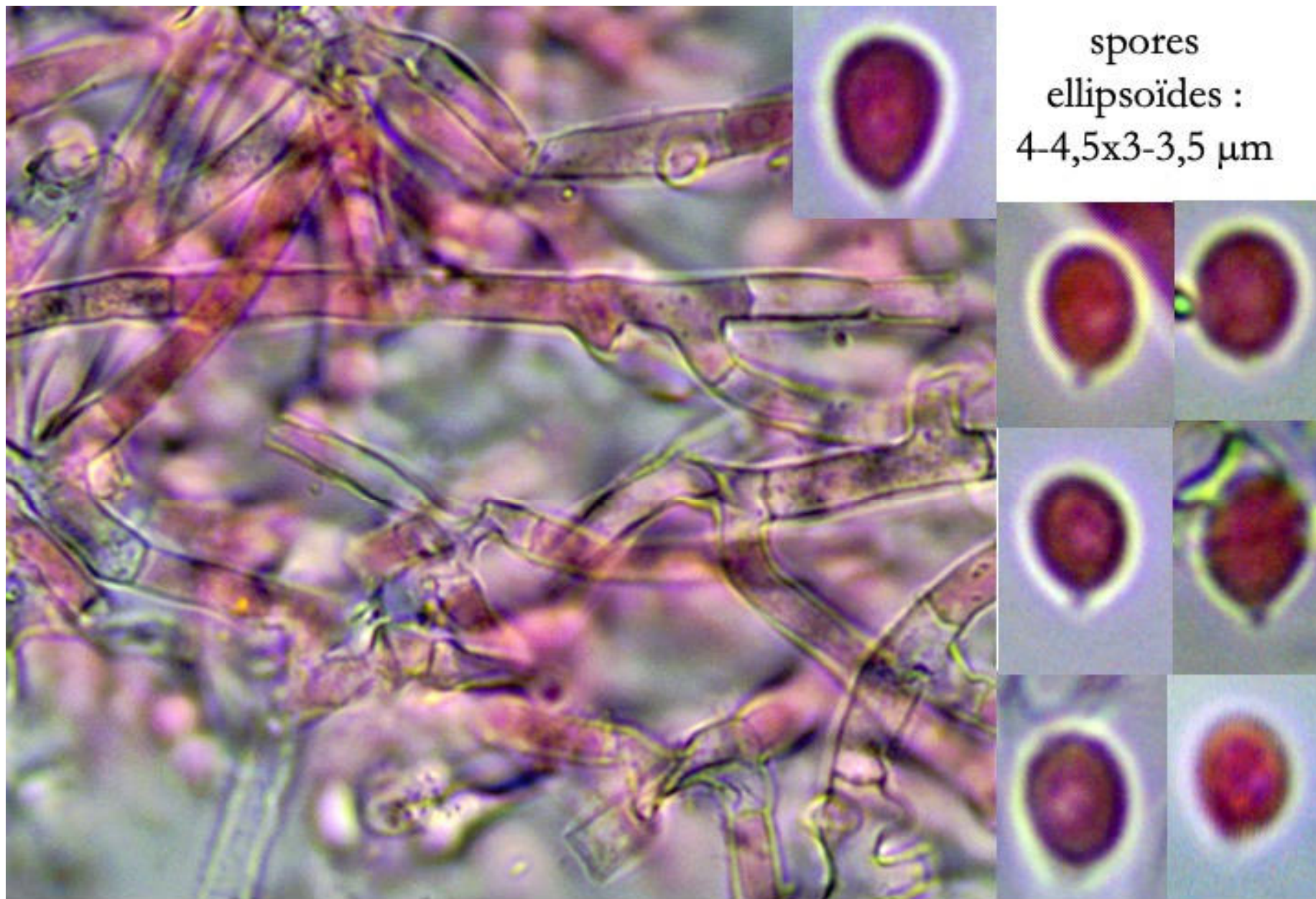
baside
tétrasporique



monomitique,
hyphes fortement
incrustées

The image consists of five overlapping microscopic panels showing a fungus. The hyphae are stained pink and are heavily encrusted with dark, granular material, likely spores or mineral deposits. The overall appearance is dense and intricate. A central white box contains the text: "monomitique, hyphes fortement incrustées".

monomitique,
hyphes
fortement
incrustées



spores
ellipsoïdes :
4-4,5x3-3,5 μm

monomitique, hyphes non bouclées