

# Les types de trames

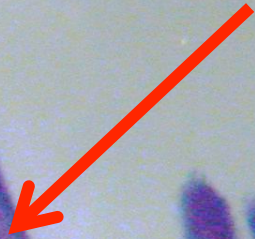
Marcel Lecomte & Guy  
Fortin, Massemble 2019

**Vous avez dit  
trame ?**



Photo M. Lecomte

**Mediostrate**



**Coupe Radiale dans un chapeau de lactaire, avec coloration**



© G. Fortin

Hyménium

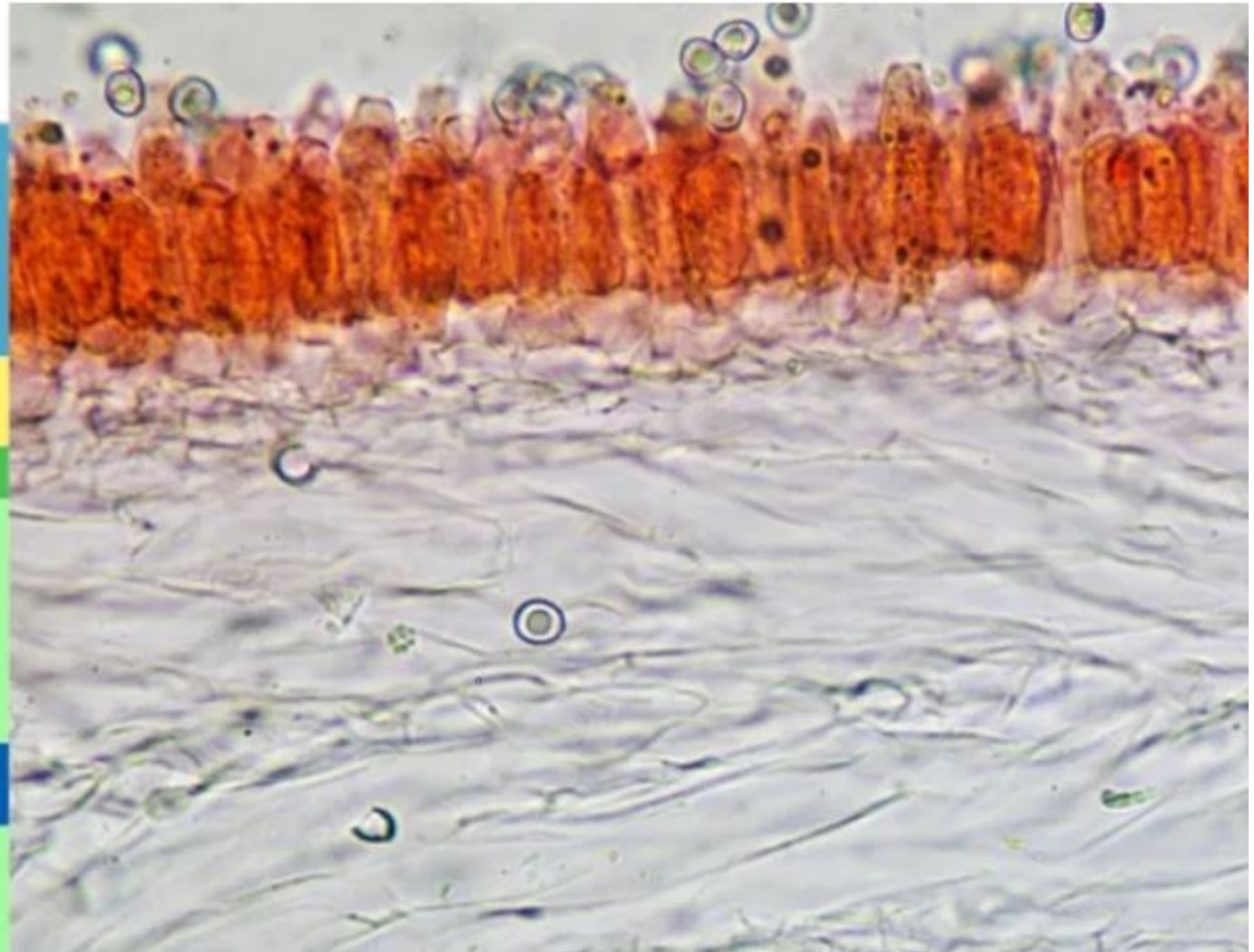
Sous-hyménium

Hyménopodium

Trame lamellaire

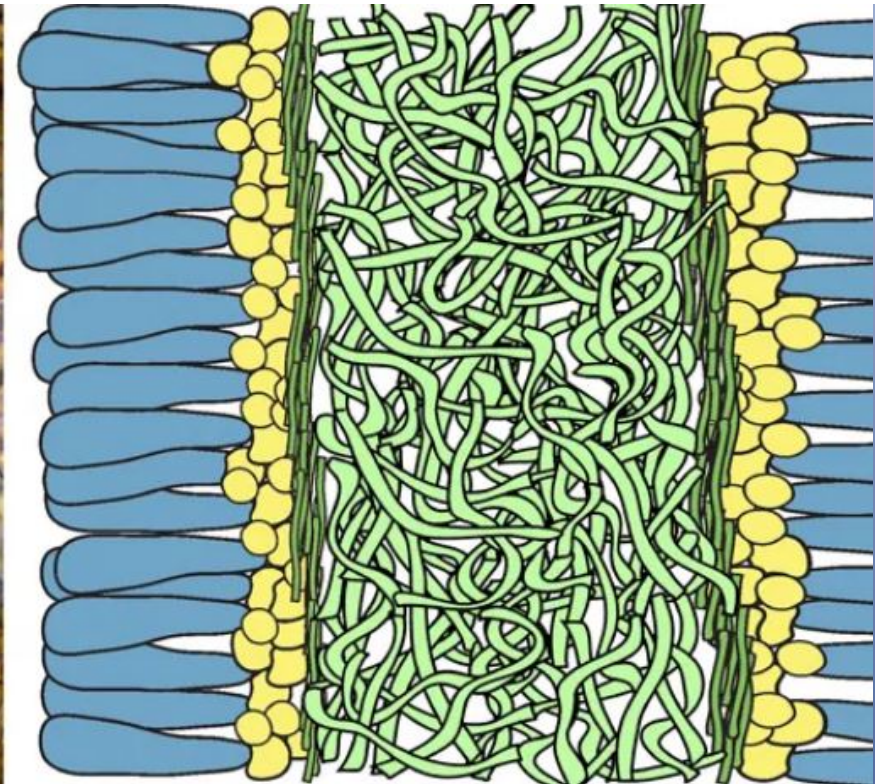
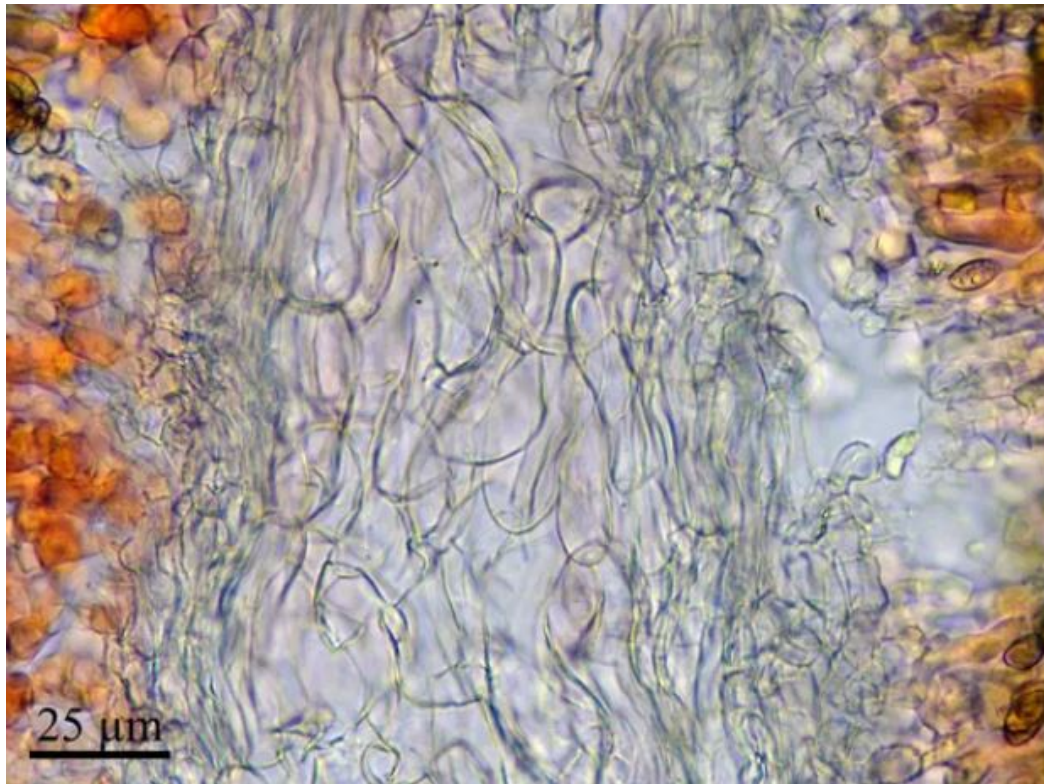
Méδιοstrate

Trame lamellaire



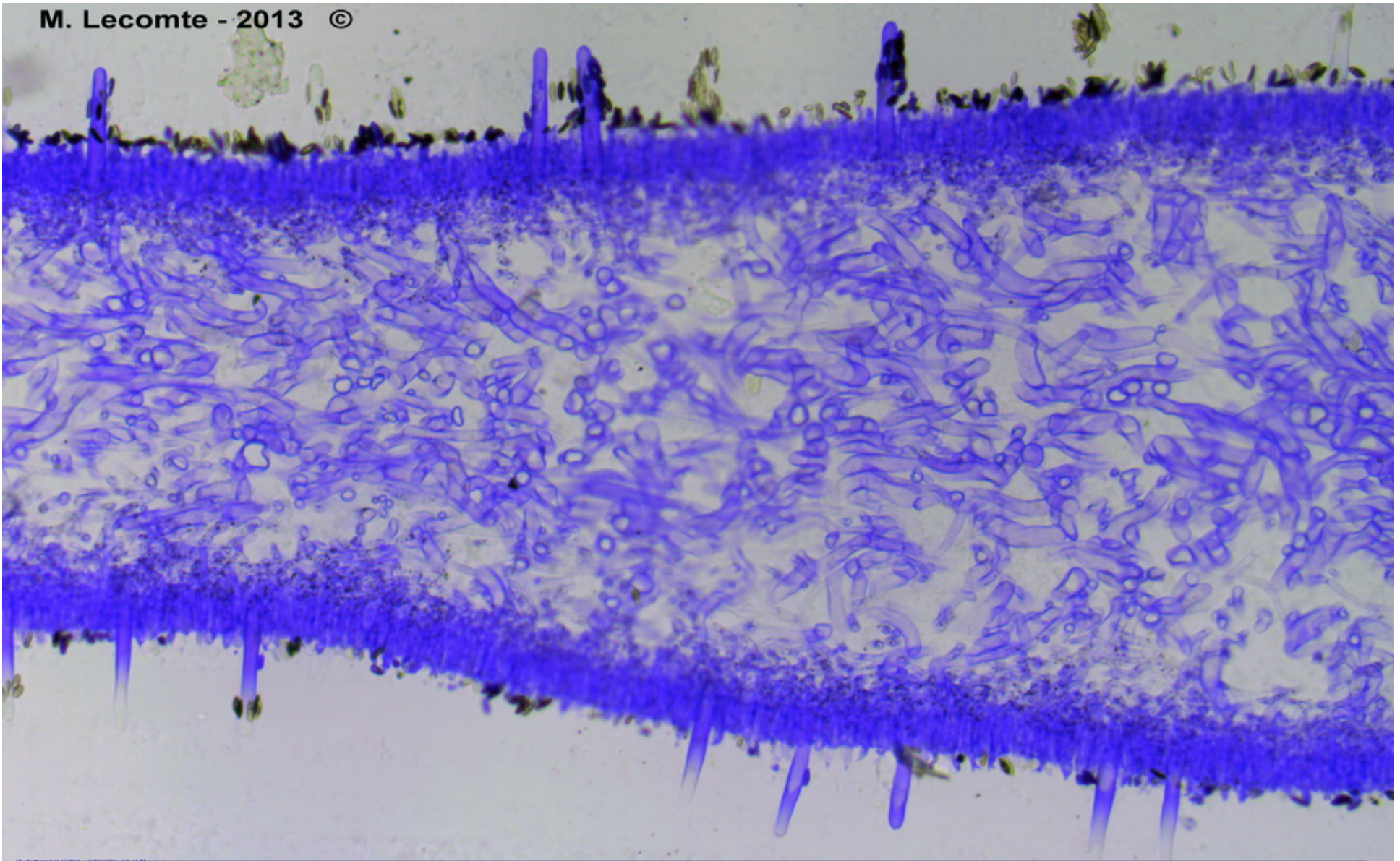
**Coupe transversale dans une lame**





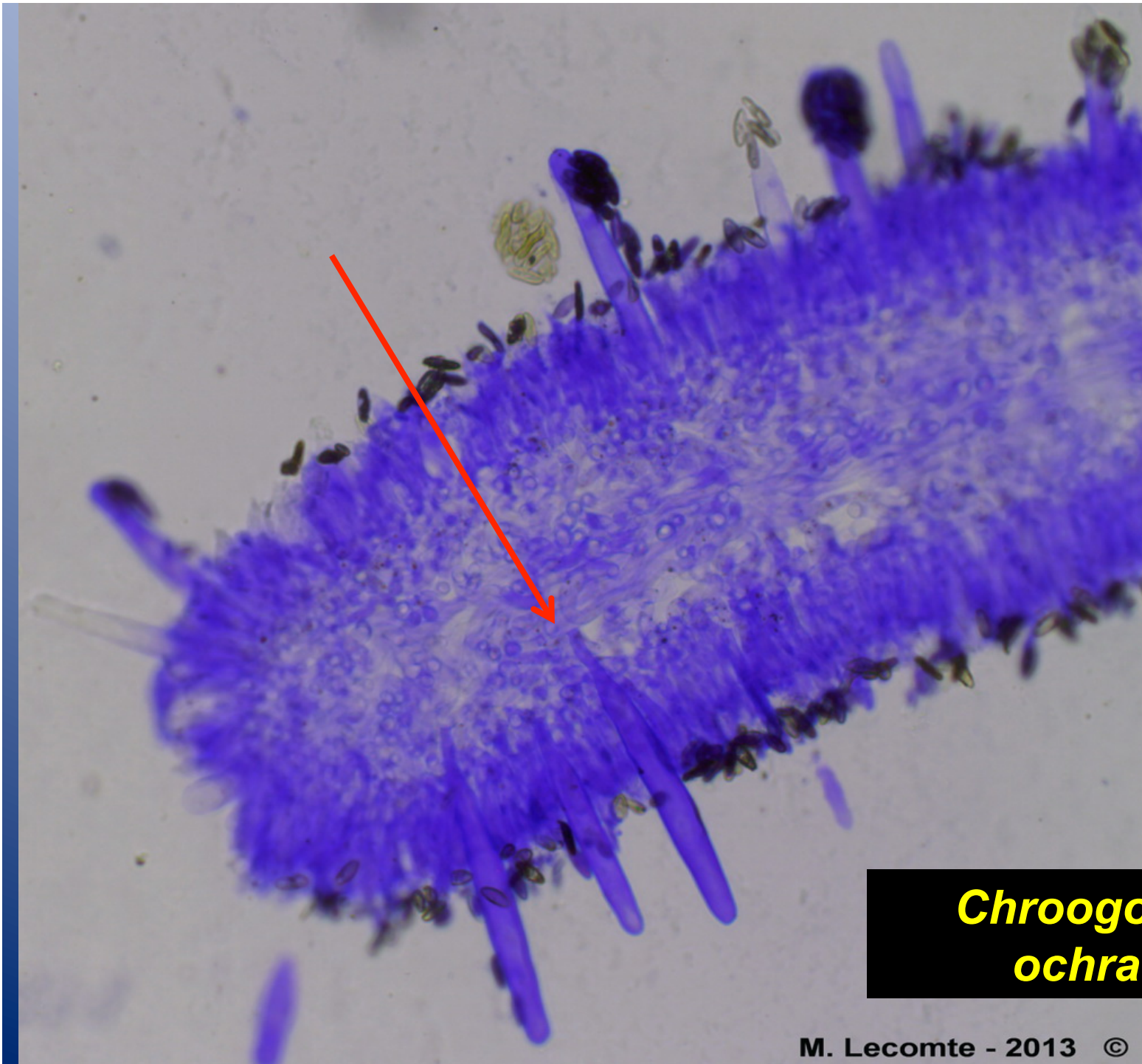
**Trame irrégulière chez *Crepidotus* sp.**  
*Aussi chez*  
*Omphalina, Marasmius, Pleurotus*





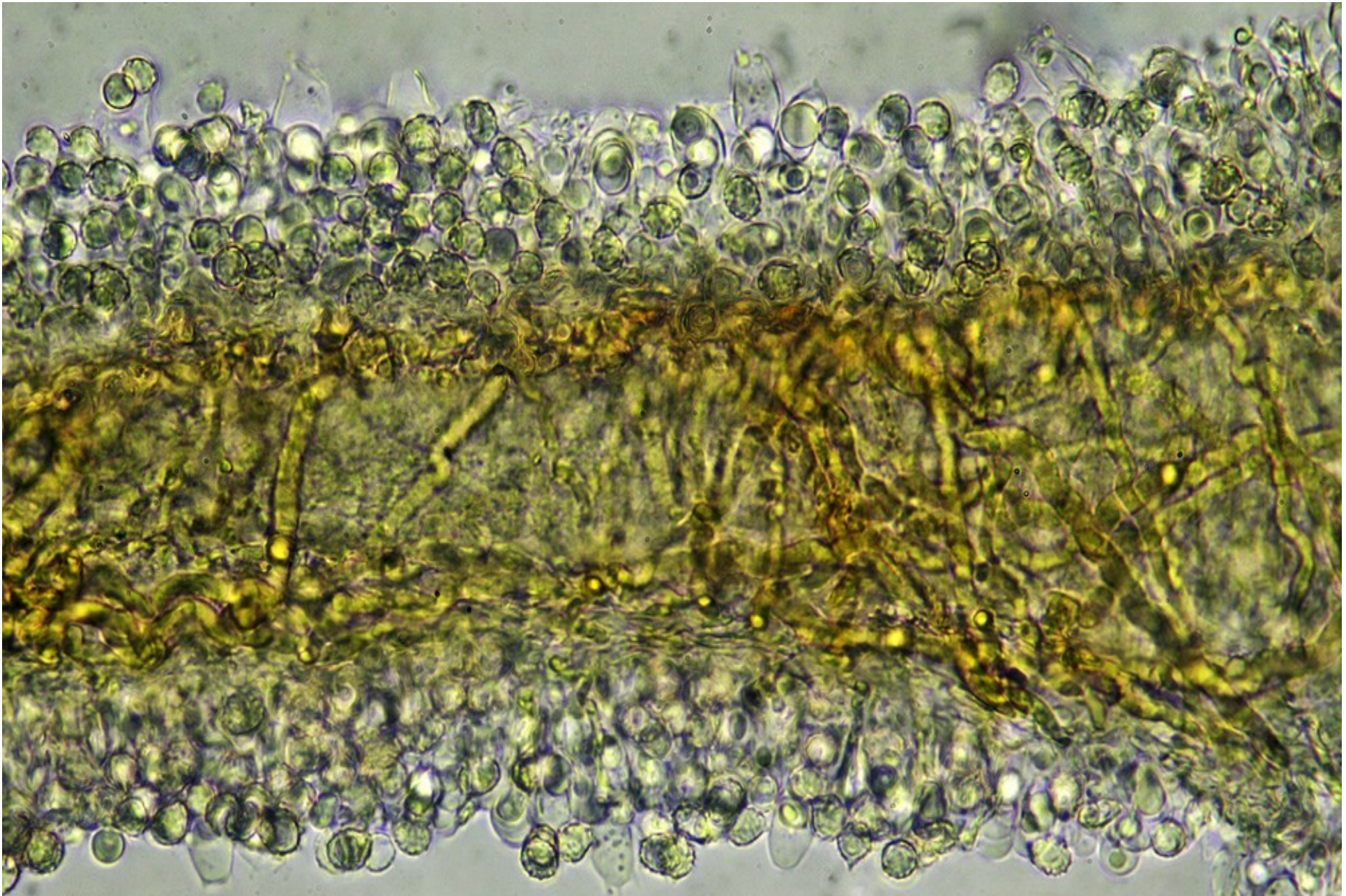
**Trame irrégulière chez *Chroogomphus ocraceus***





***Chroogomphus  
ochraceus***

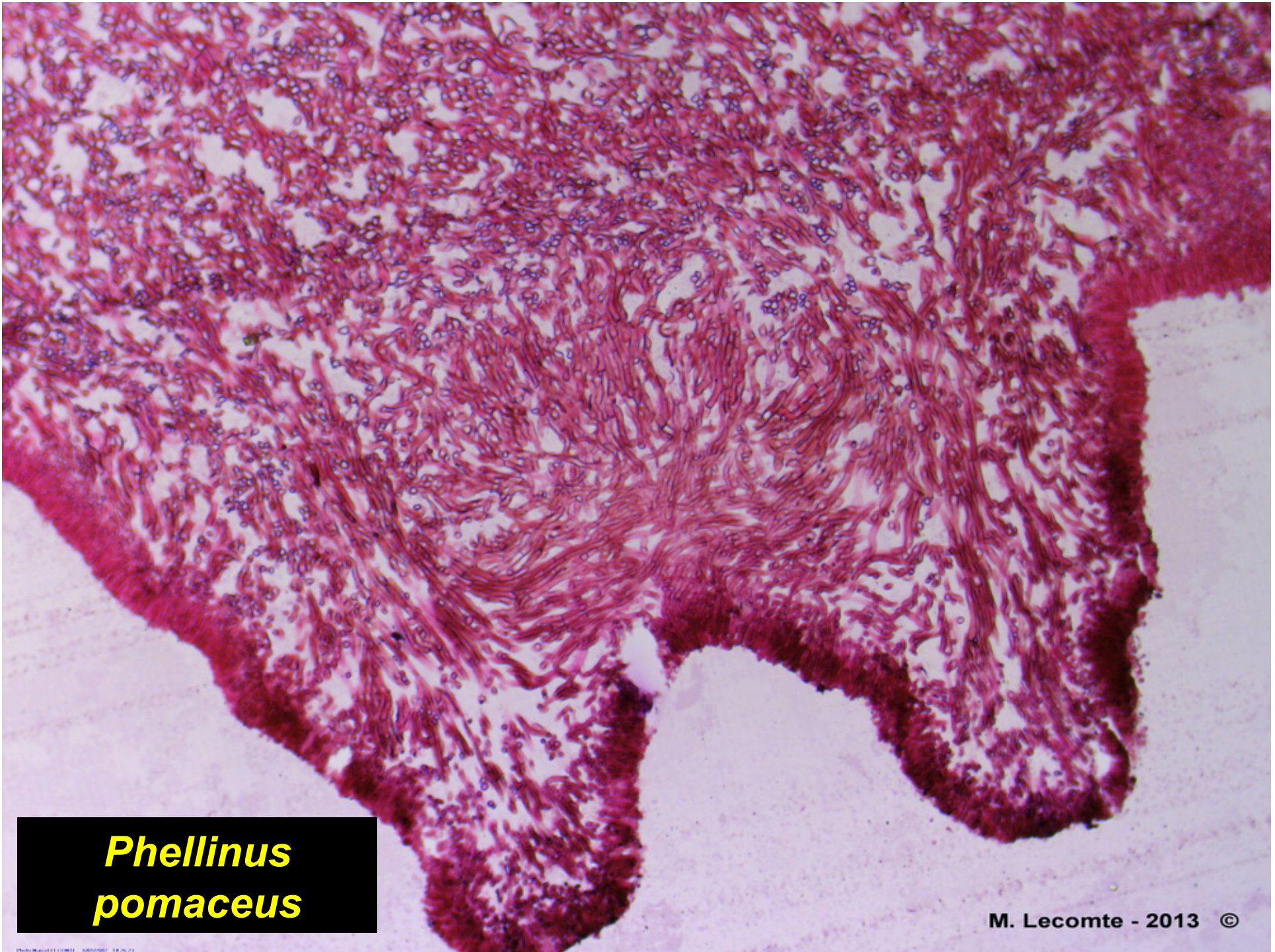




25  $\mu\text{m}$

**Trame irrégulière de lactaire**

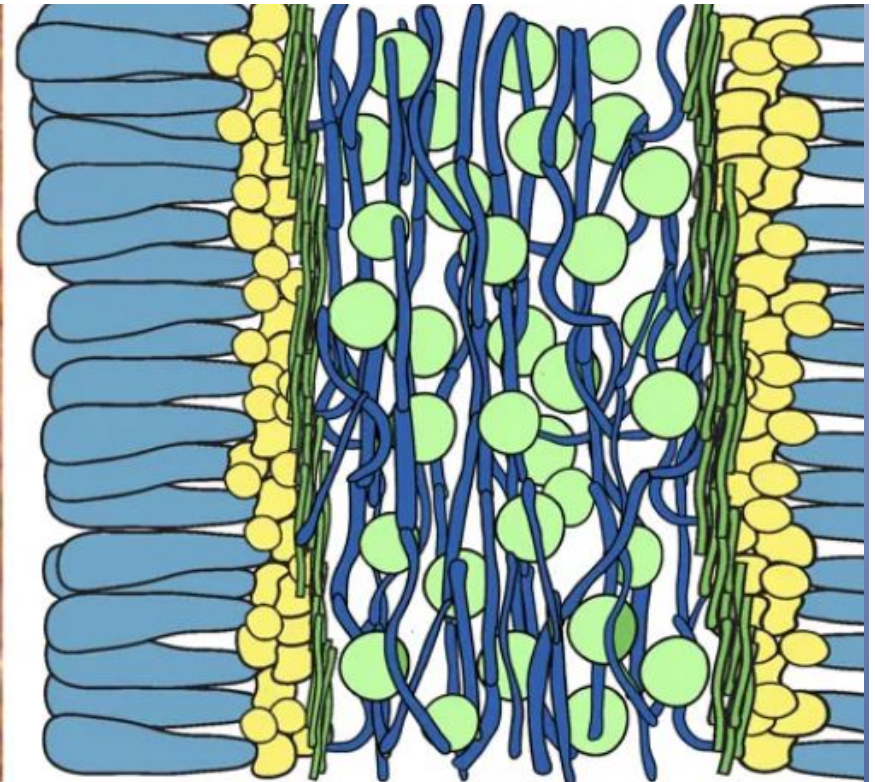
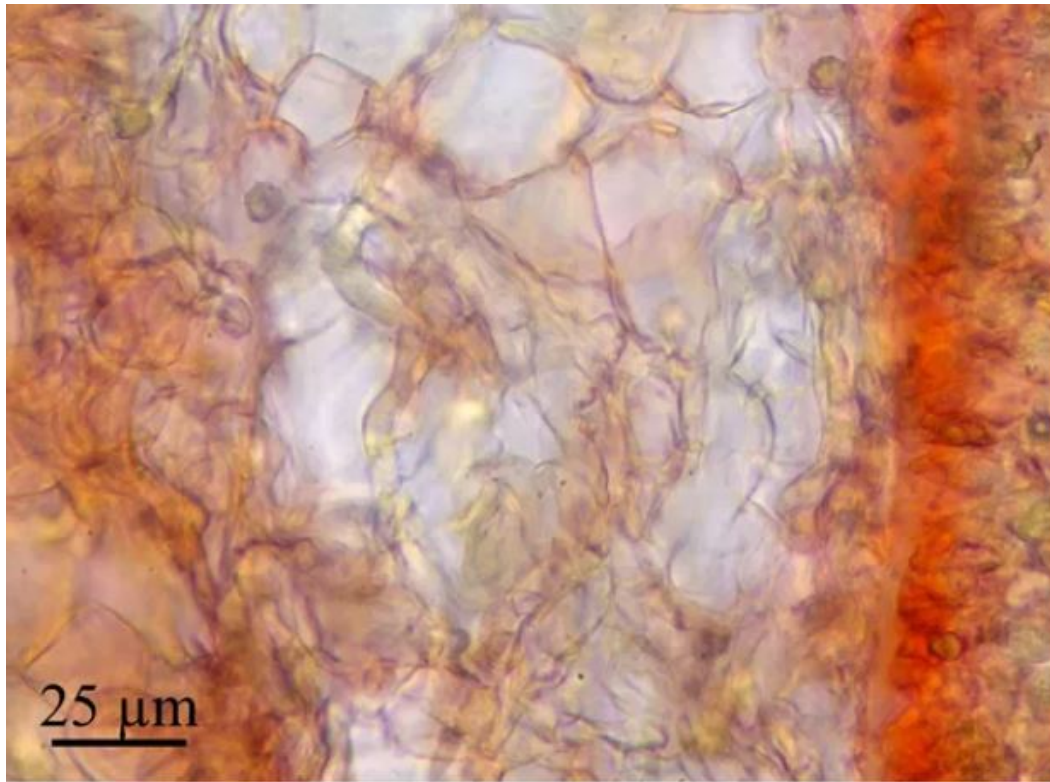




***Phellinus  
pomaceus***

M. Lecomte - 2013 ©

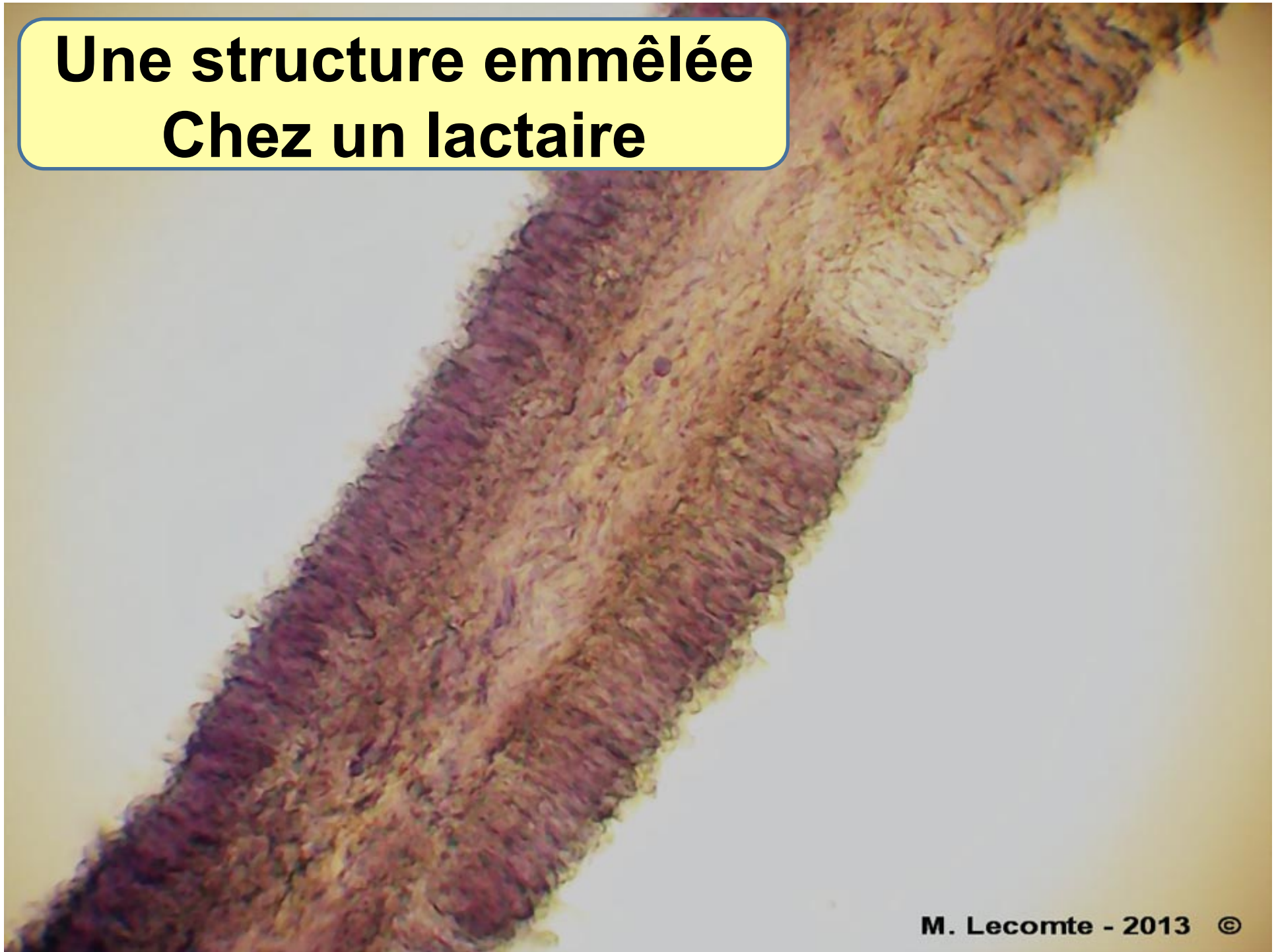


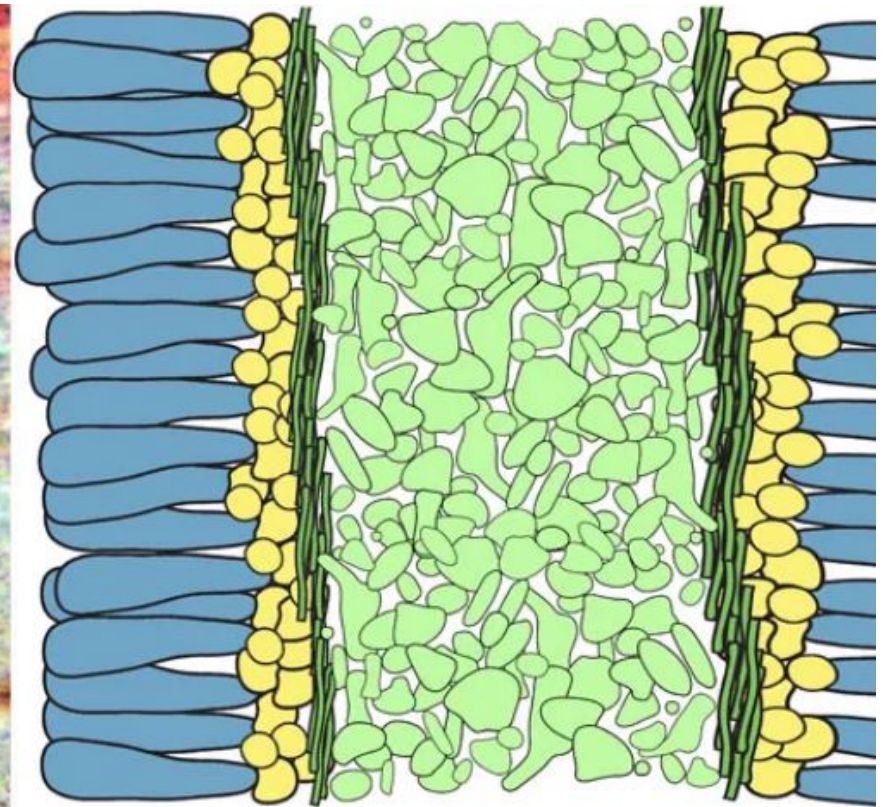
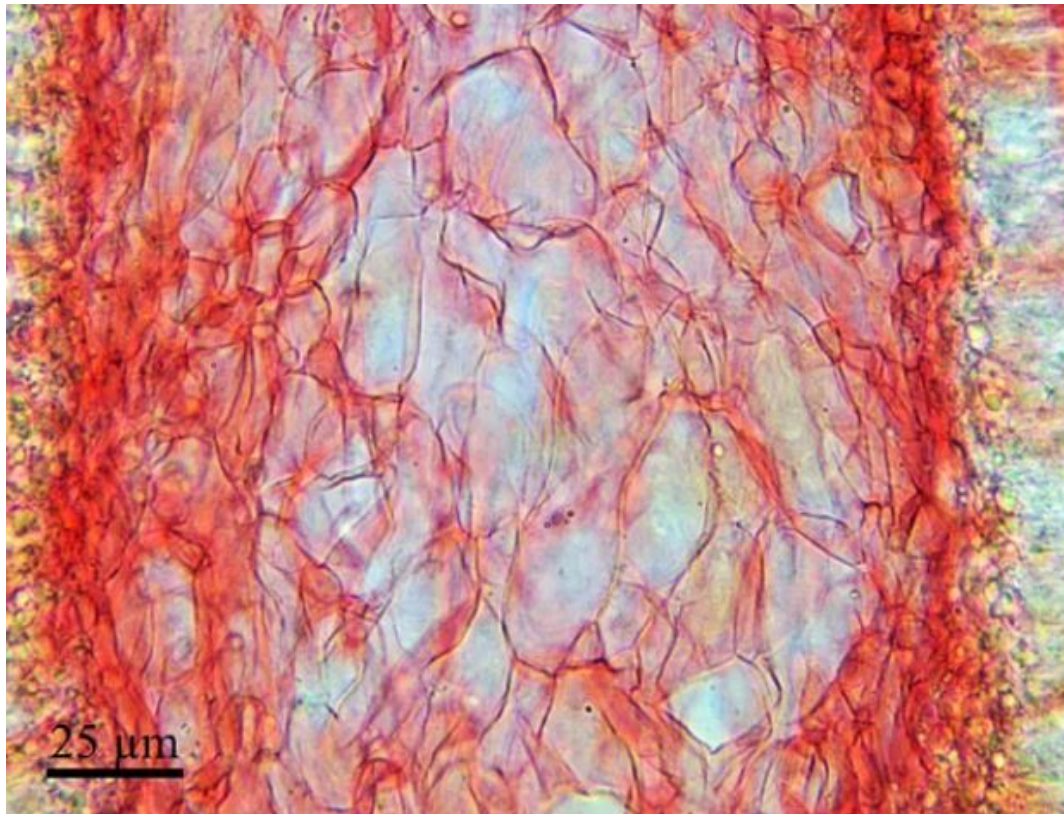


**Trame emmêlée (ou entremêlée) chez  
*Russula fragrantissima***



# Une structure emmêlée Chez un lactaire



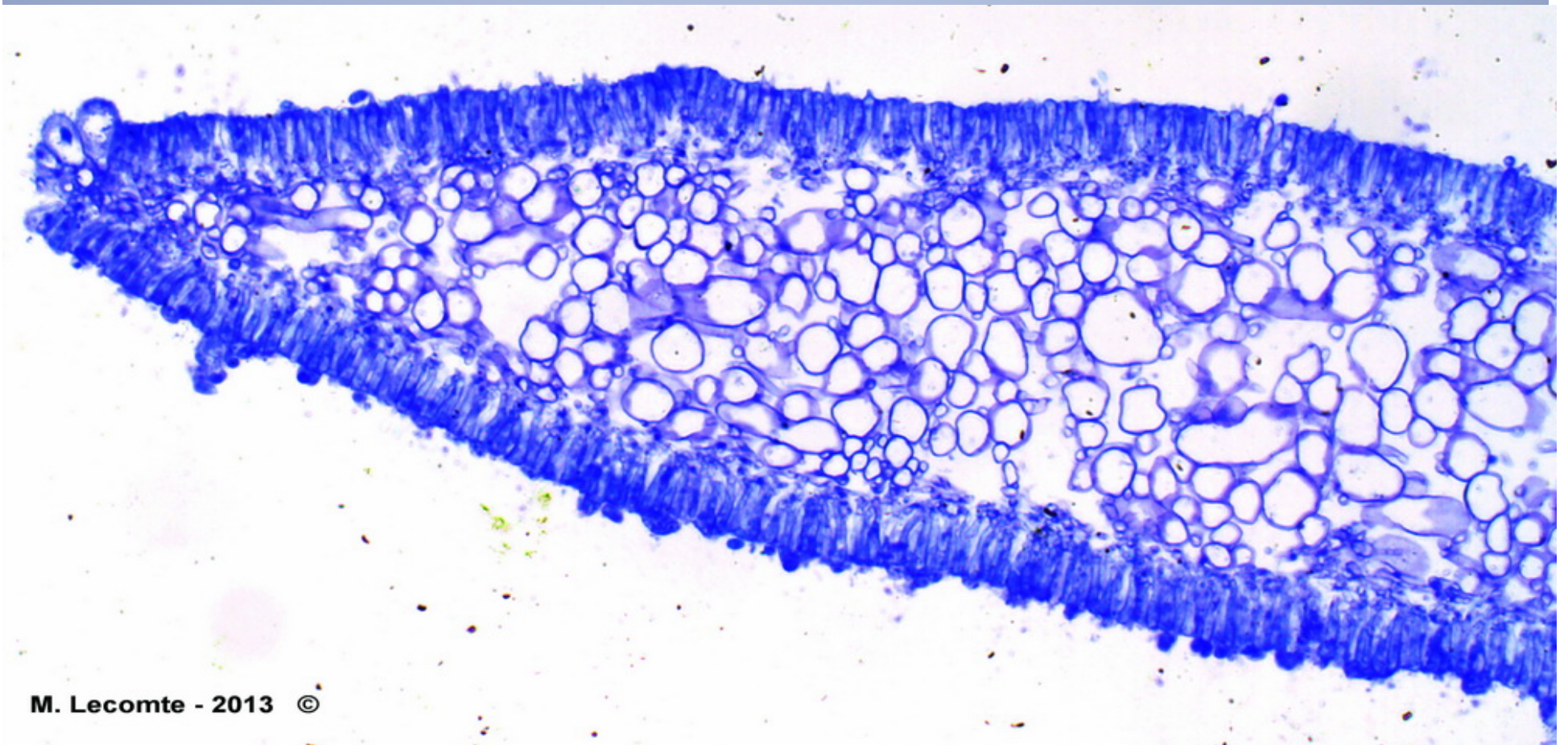


**Trame cellulaire chez *Mycena galopus*  
dite aussi « à sphérocytes »**

© G. Fortin



*Mycena metata*



M. Lecomte - 2013 ©

**Une trame à structure cellulaire  
dite à sphérocytes**



***Russula*  
*citrinoclora***





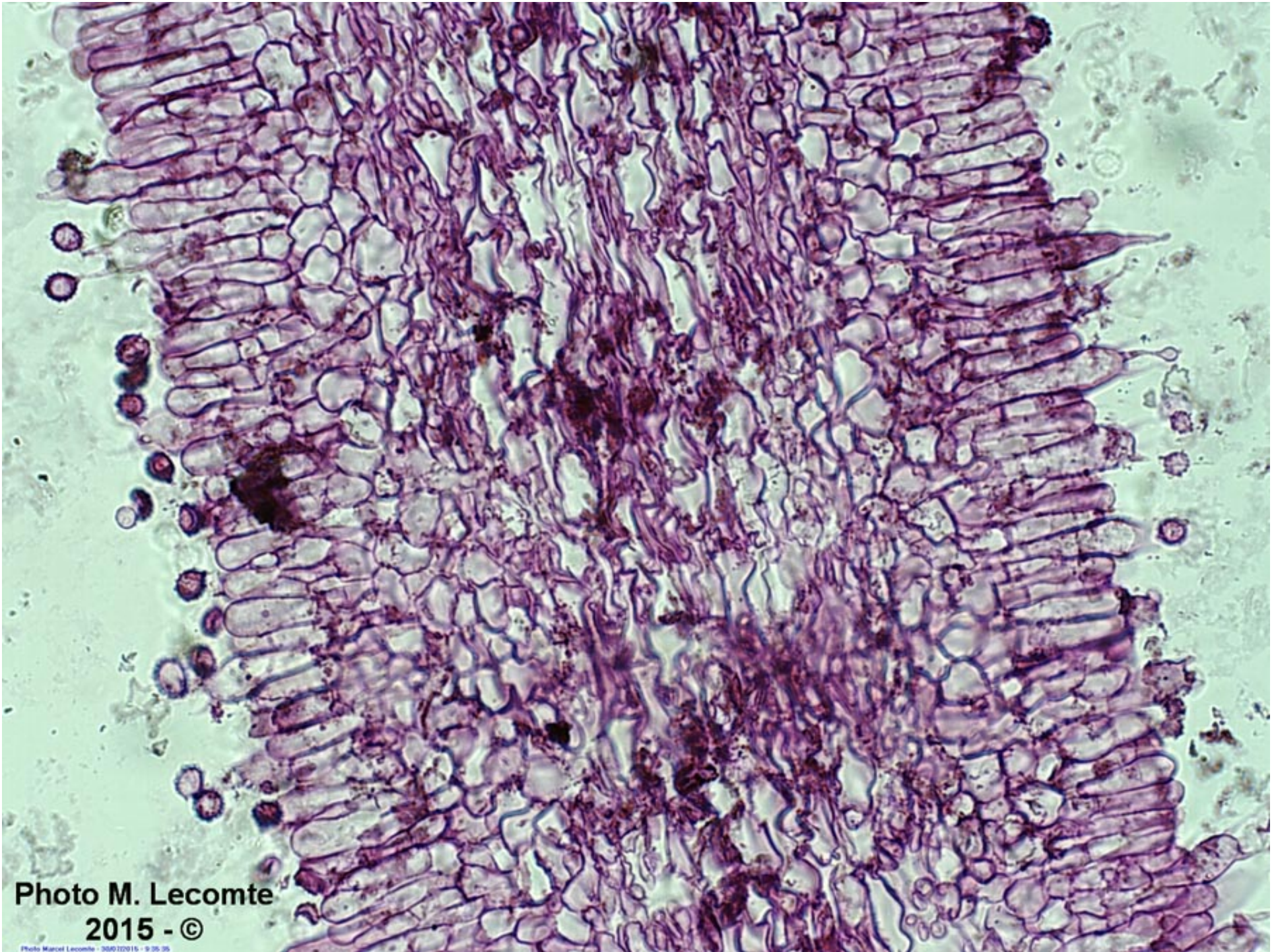


Photo M. Lecomte  
2015 - ©

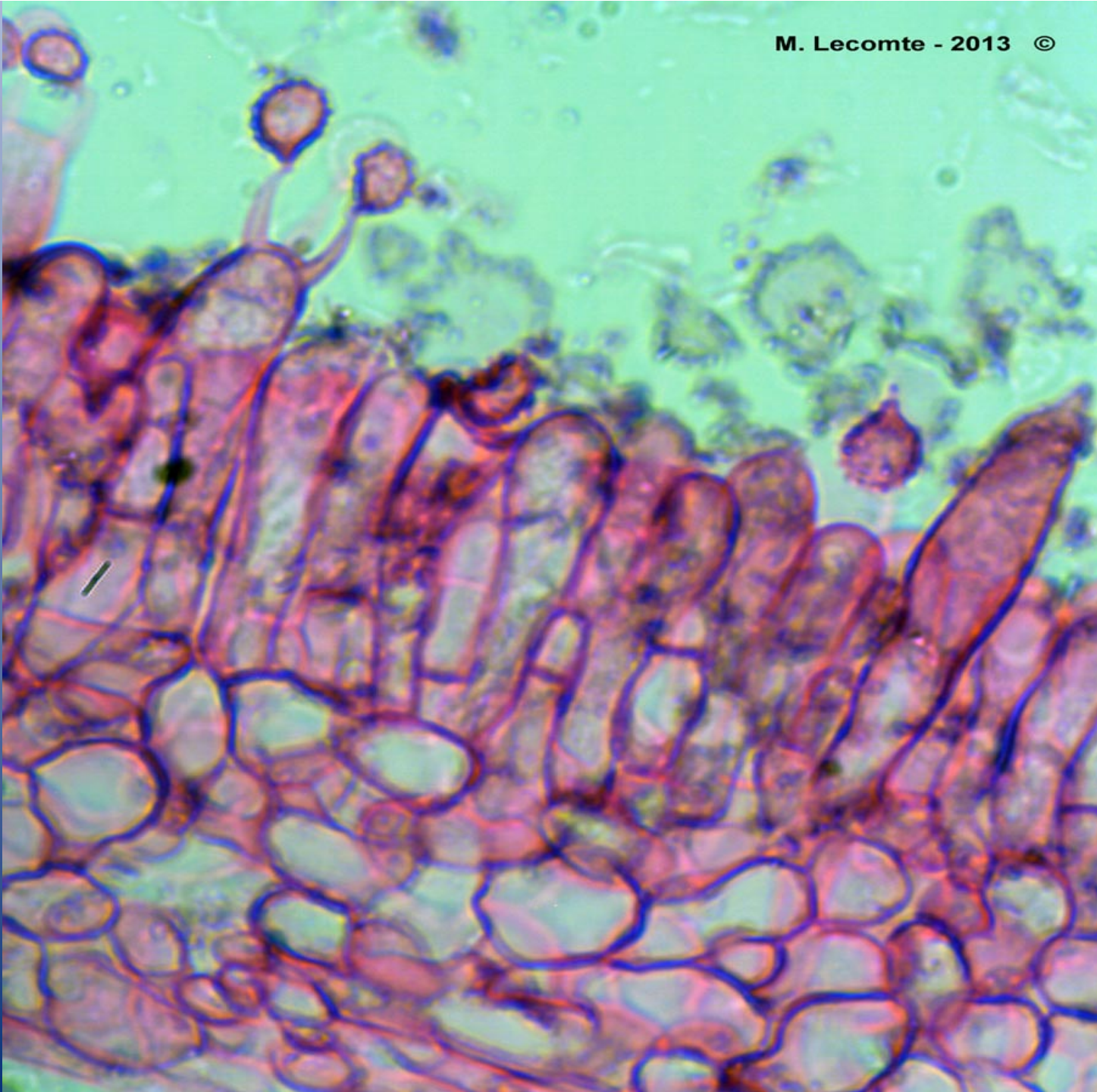


Photo M. Lecomte

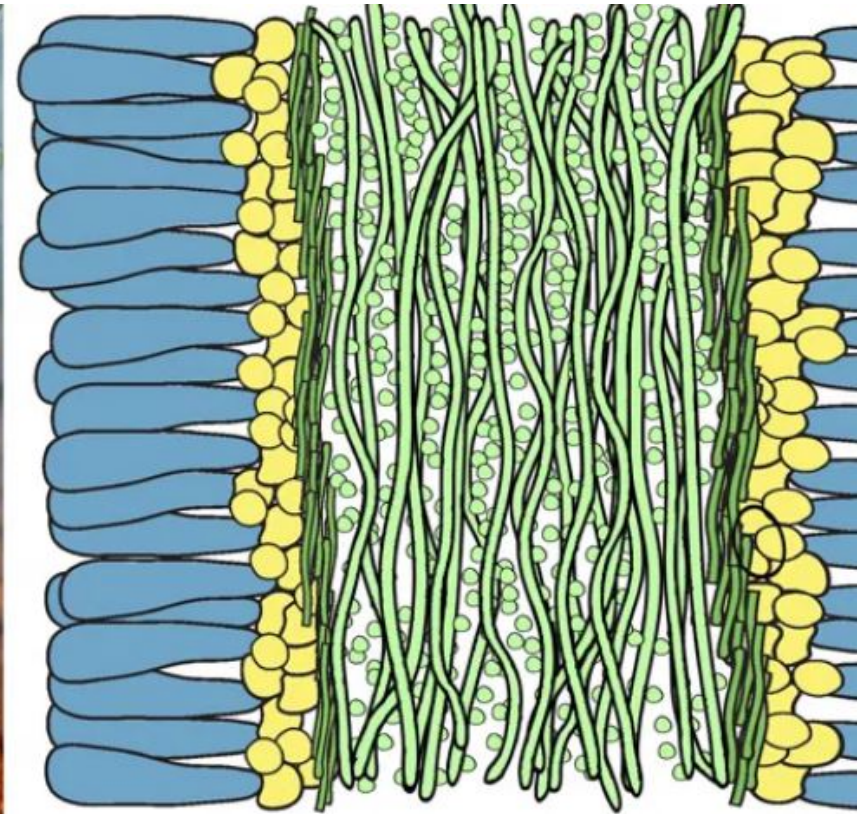
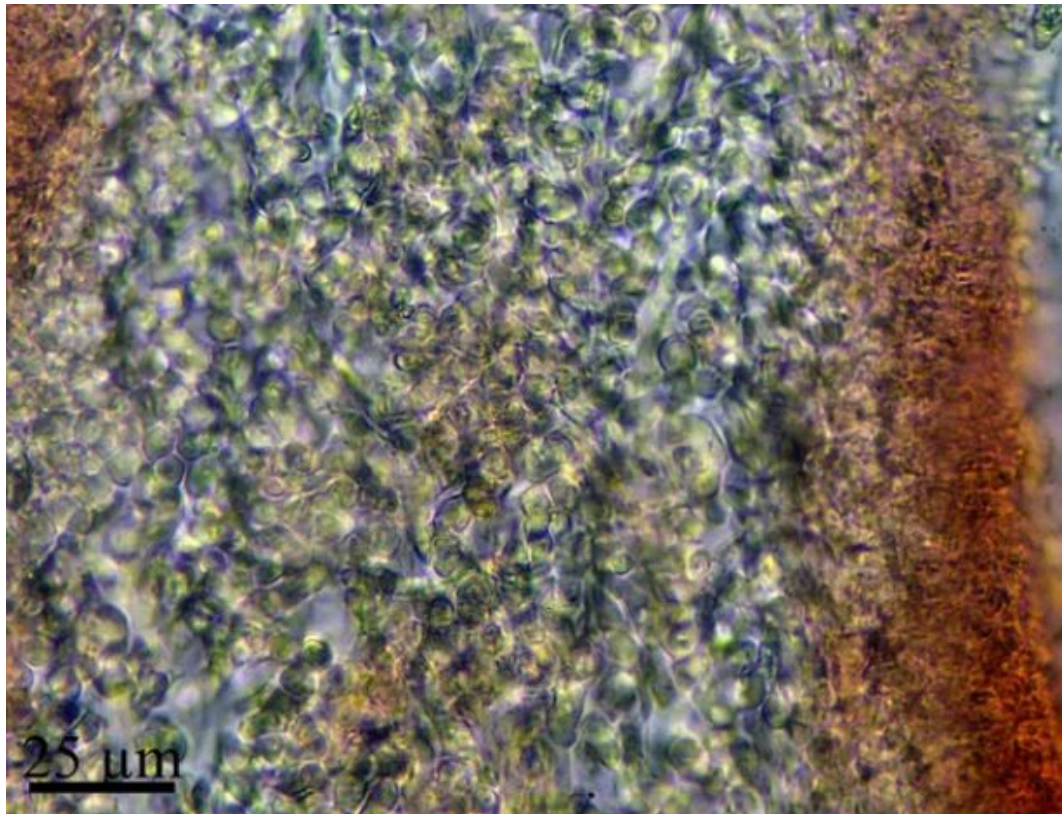
***Russula sp.***







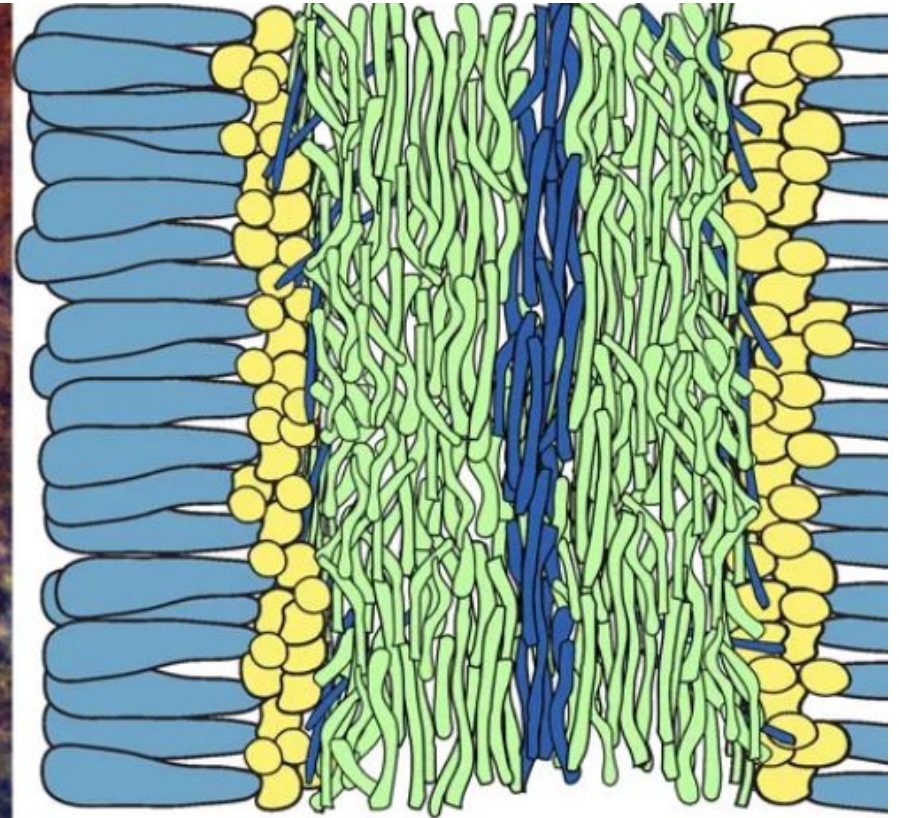
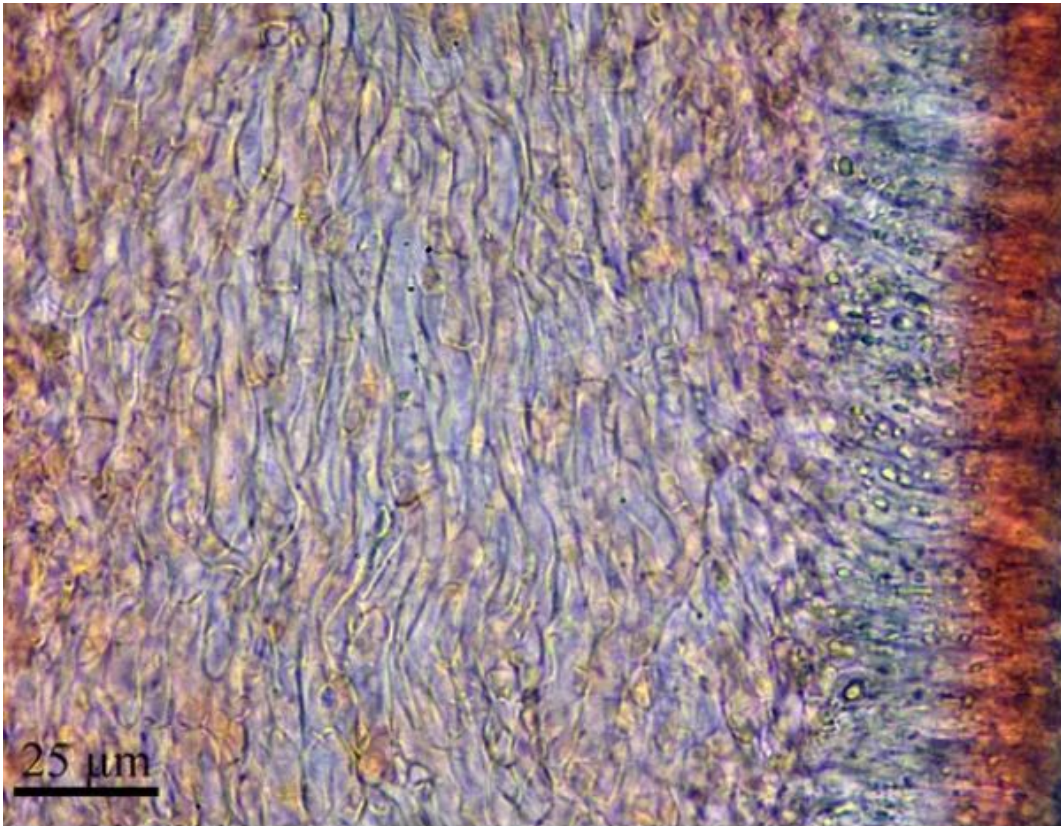




**Trame bidirectionnelle chez *Panellus stipticus* (aussi chez les Xeromphalina)**

© G. Fortin





**Trame subrégulière chez *Hygrocybe* sp. (sans doute la plus courante)**

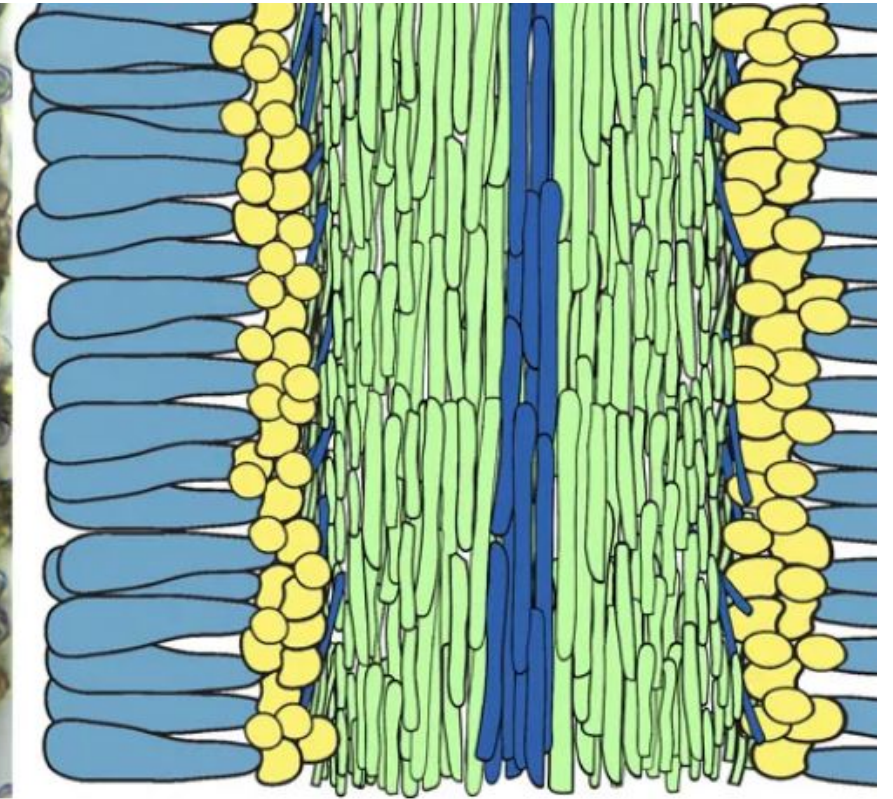
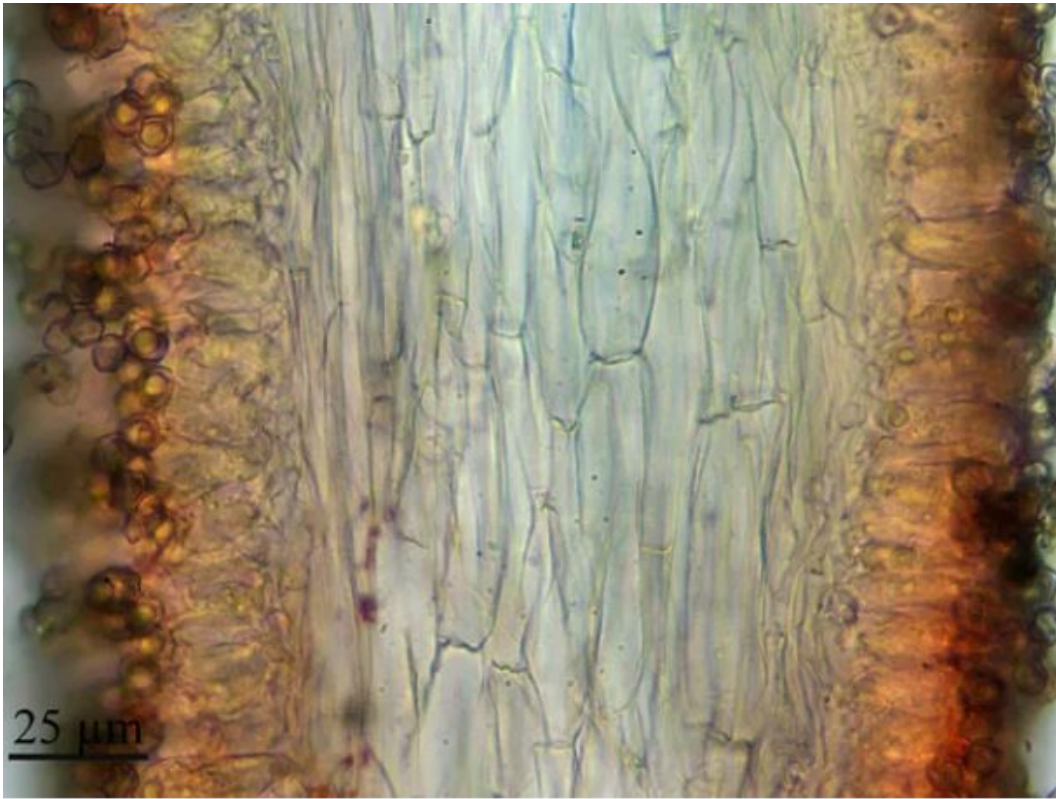




M. Lecomte - 2013 ©

*Psathyrella  
spadiceogrisea*





**Trame régulière (ou //) chez *Entoloma* sp. (aussi chez *Tubaria* sp.)**

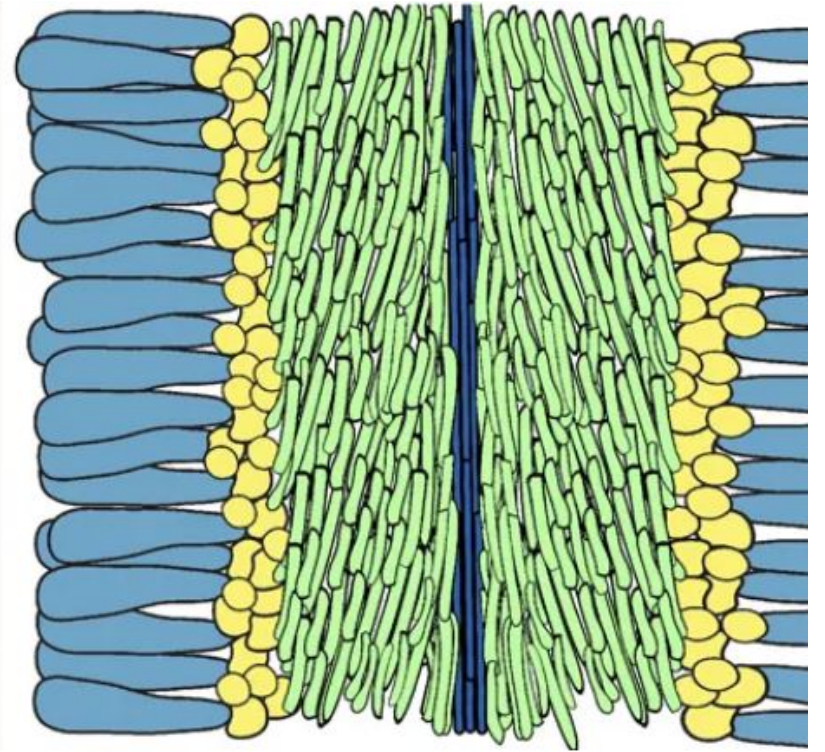
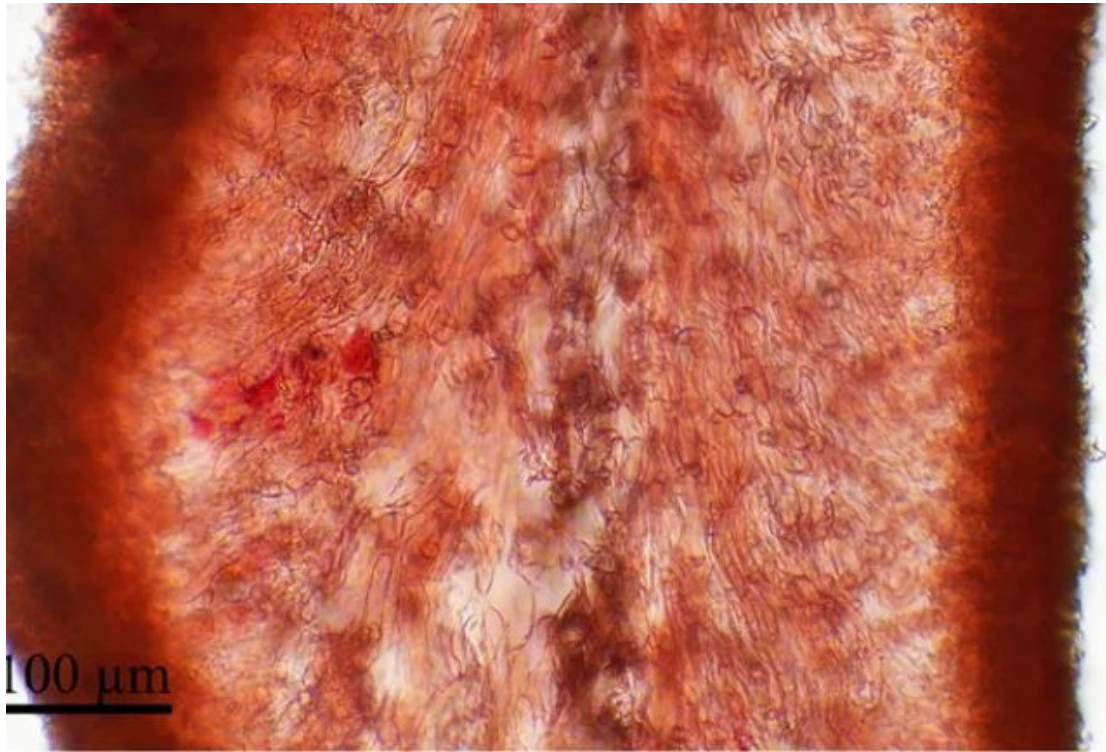


*Tubaria hiemalis*

M. Lecomte - 2013 ©

**Une trame parallèle**

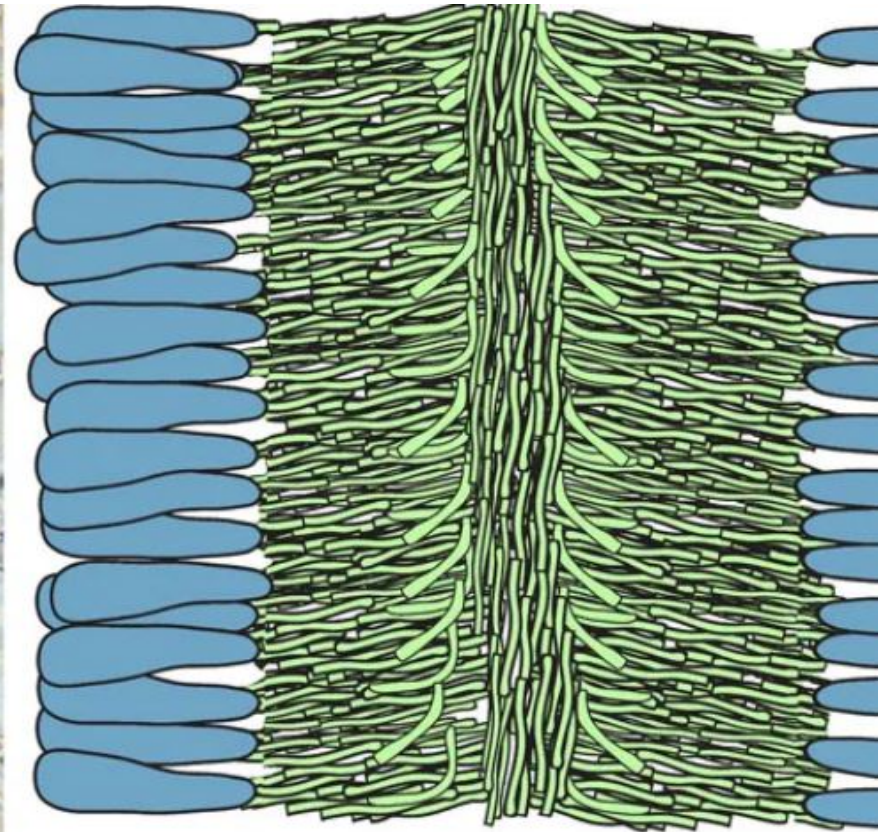
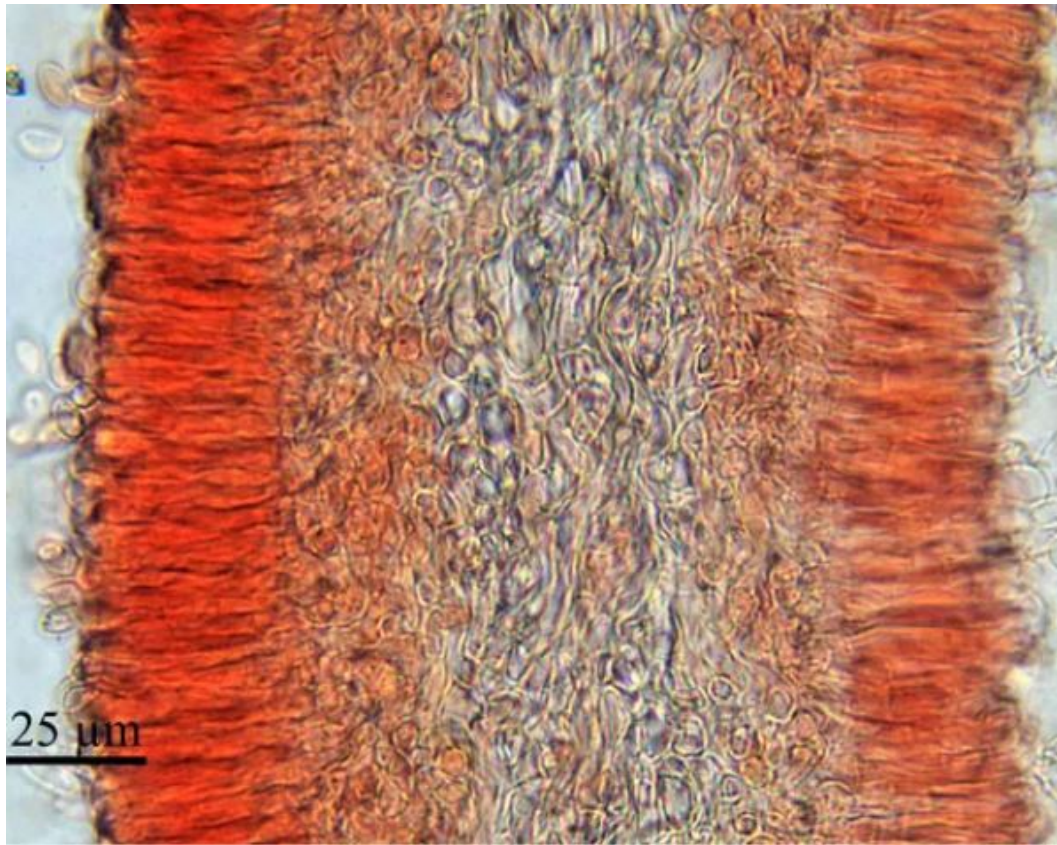




**Trame divergente  
chez *Hygrophorus* sp.**

© G. Fortin

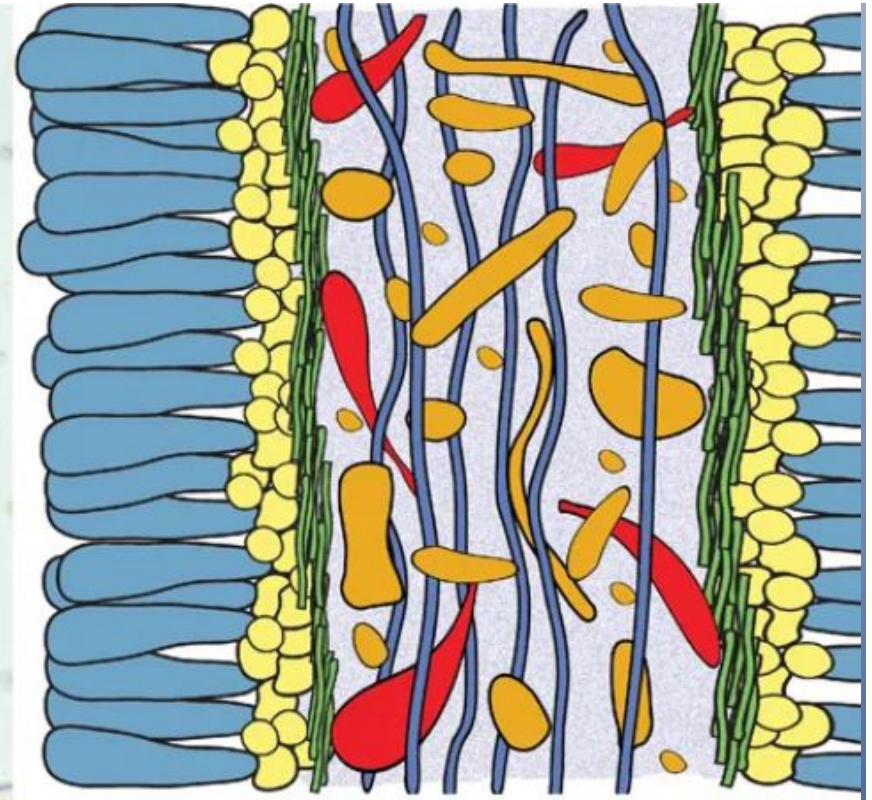
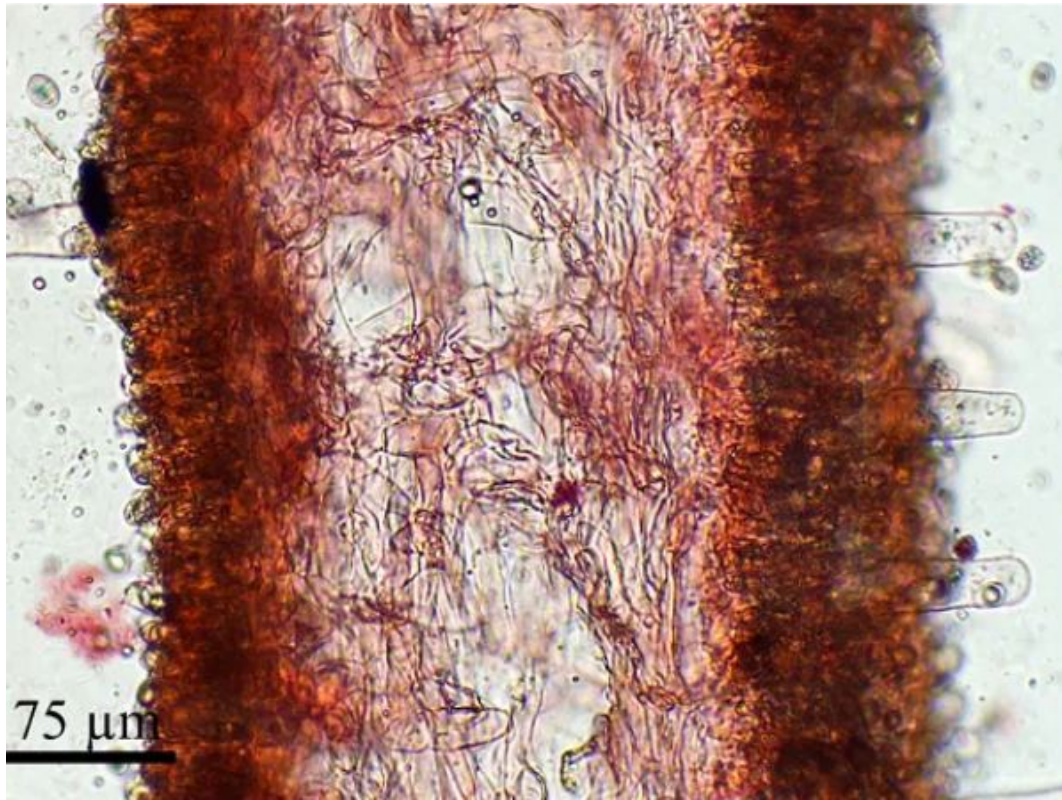




**Trame pachypodiale**  
**chez *Chrysomphalina* sp. (aussi chez**  
***Gerronema* & *Haasiella*)**

© G. Fortin

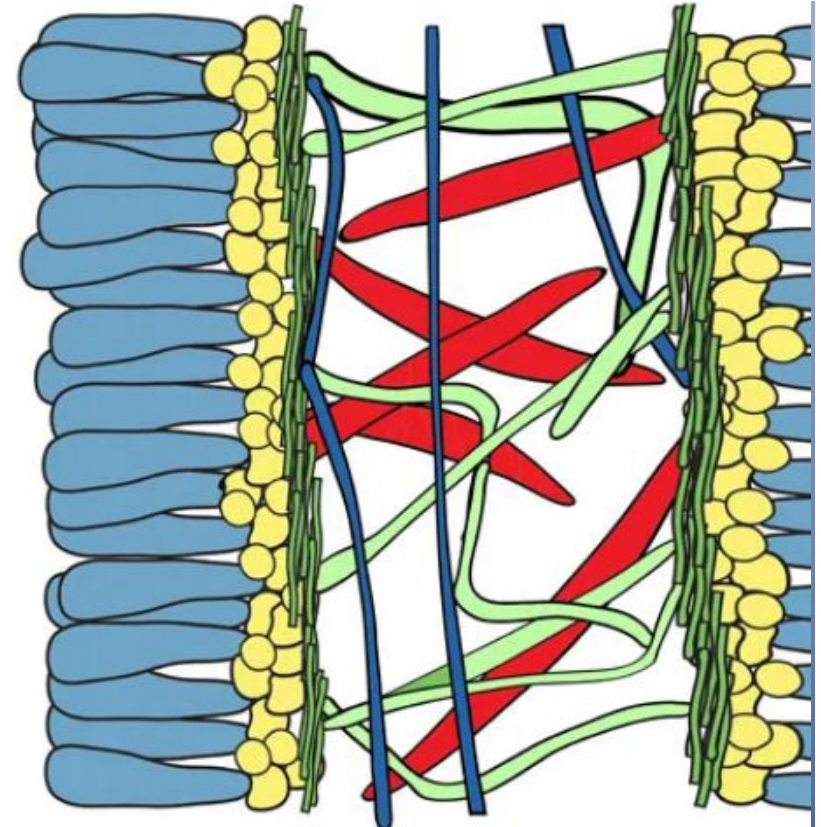
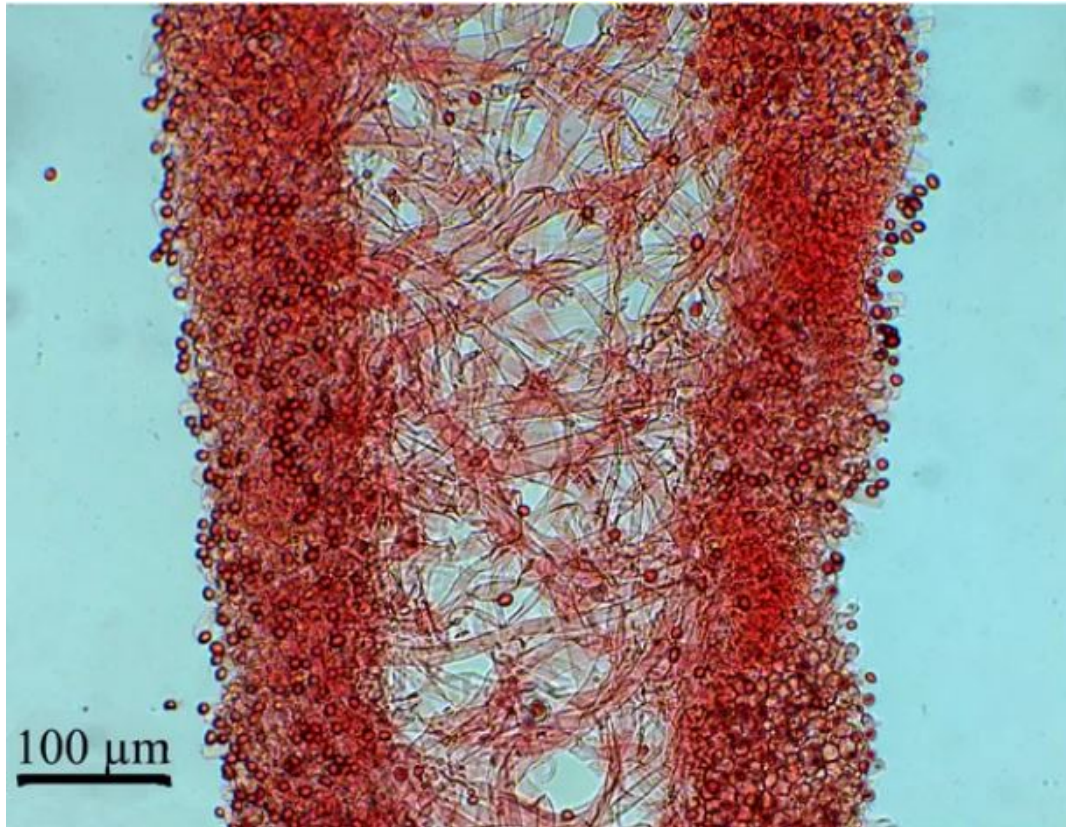




**Trame physalo-irrégulière  
chez *Hymenopellis furfuracea* (aussi  
chez *Xerula* & *Oudemansiella*)**

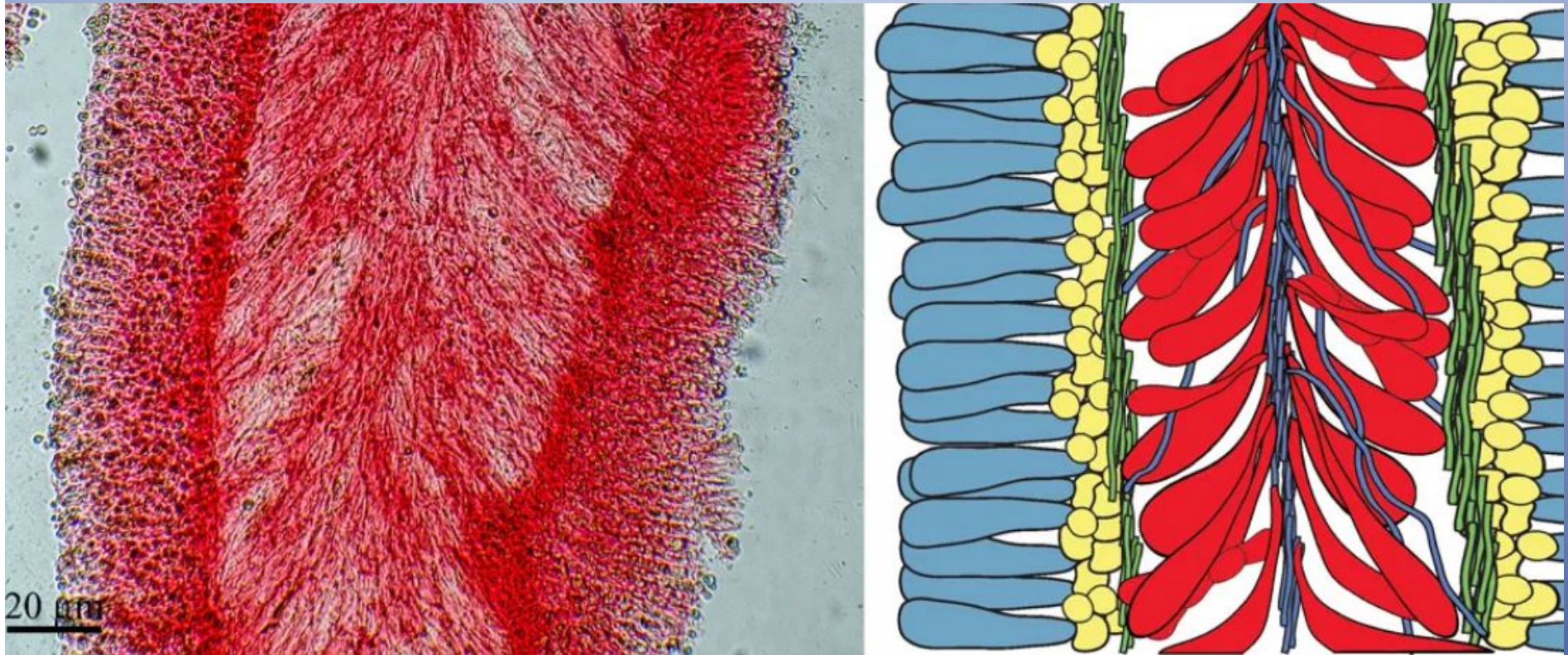
© G. Fortin





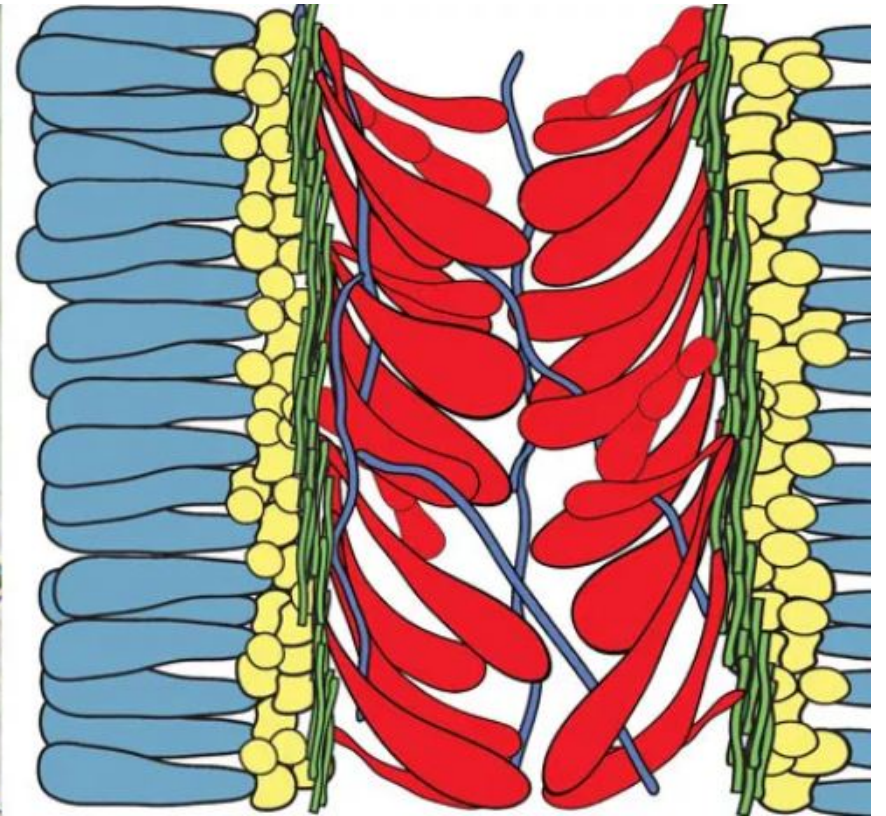
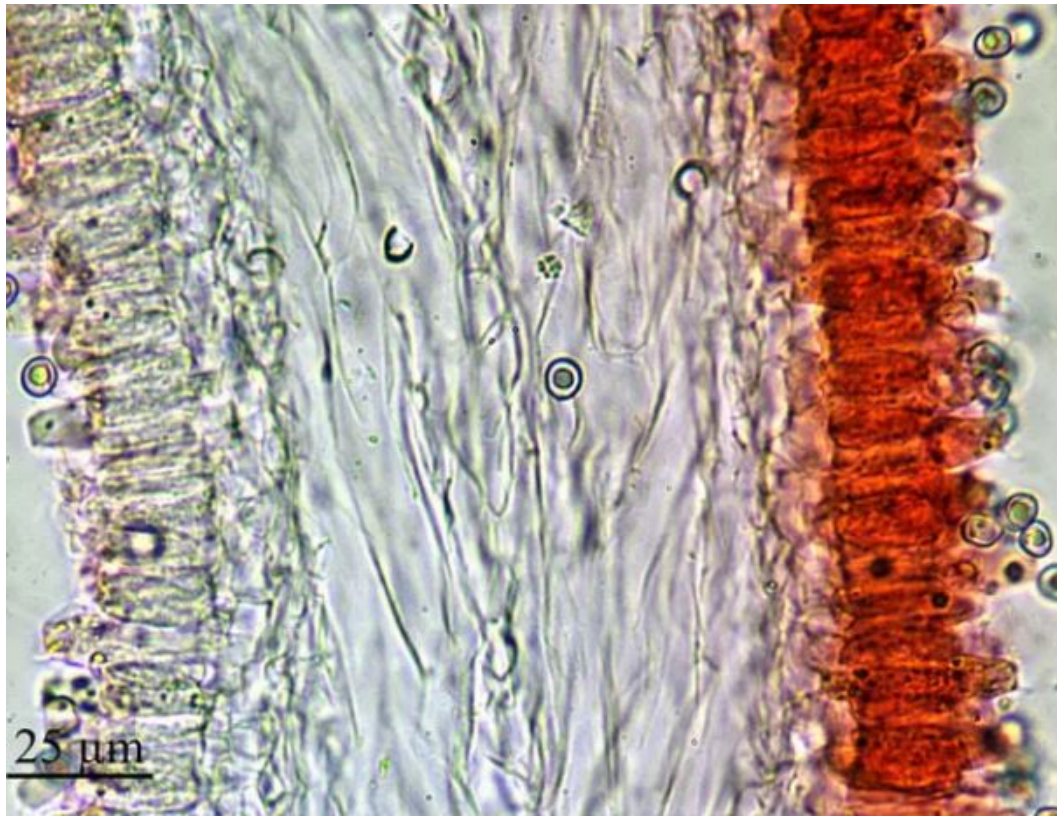
**Trame trabéculaire**  
**chez *Leucocoprinus birnbaumii* ;**  
**aussi chez *Leucoagaricus* &**  
***Macrolepiota* (?)**





**Trame bilatérale**  
**chez *Amanita citrina* (aussi chez**  
***Limacella* & *Amanitopsis*)**

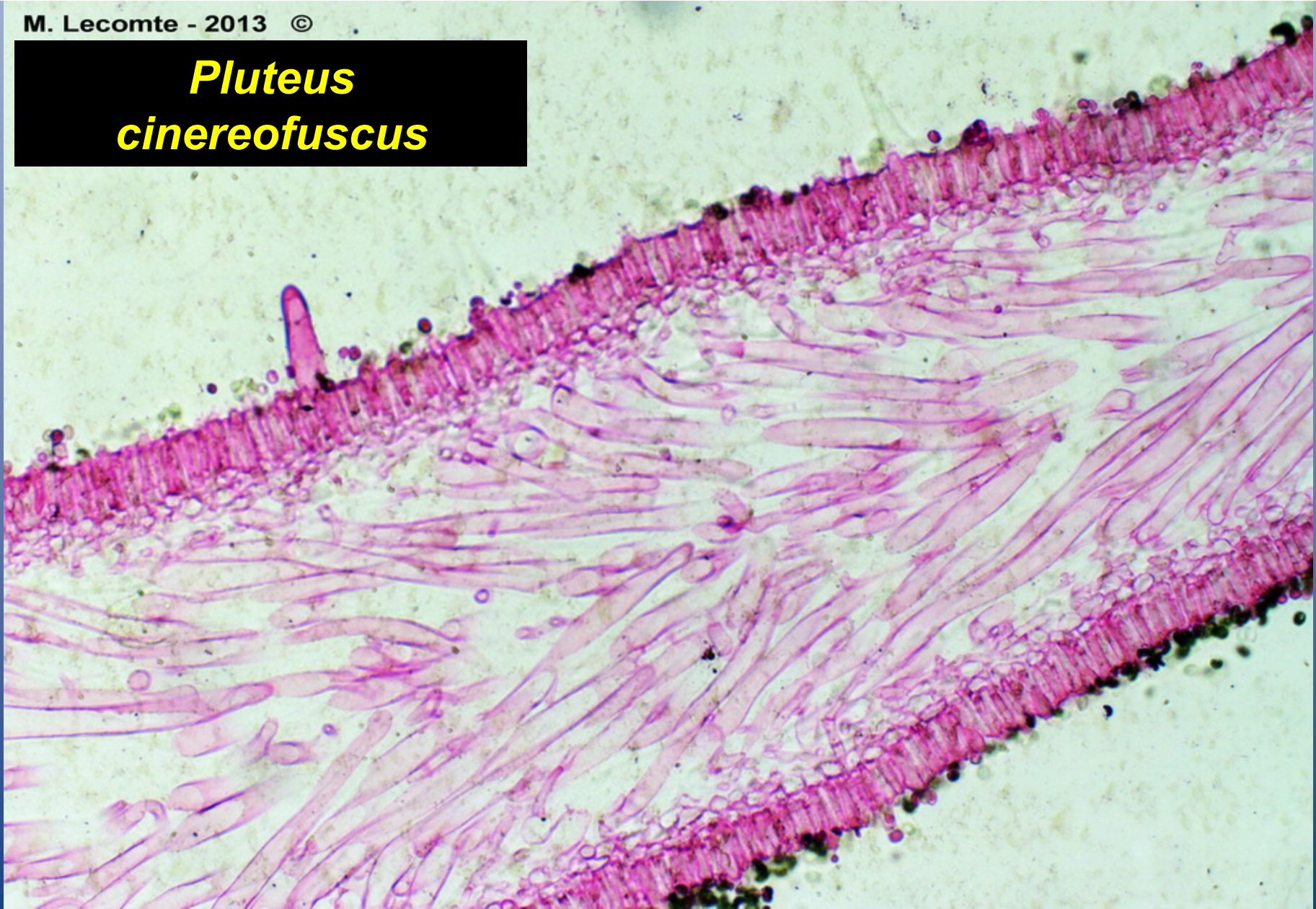




**Trame bilatérale inversée  
chez *Pluteus sp.* (aussi chez  
*Volvariella*)**



***Pluteus  
cinereofuscus***



**Une trame bilatérale**





**FIN**