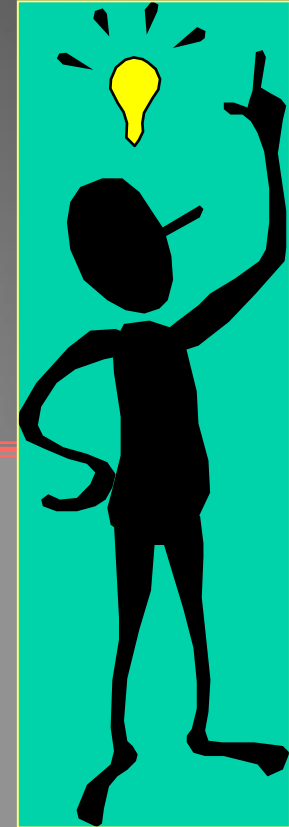


**TRAVAUX  
PRATIQUES  
de microscopie**

**3ème partie !**

**Des cystides particulières**



Et aujourd'hui :

QUOI DE NEUF ?

Photo Paul Pirot



*Stropharia aeruginosa* (Curt. : Fr.) Quélet



*Stropharia aeruginosa*





Spores :

7,5-8 x 4-4,5  $\mu\text{m}$



Un moyen infailible pour reconnaître :

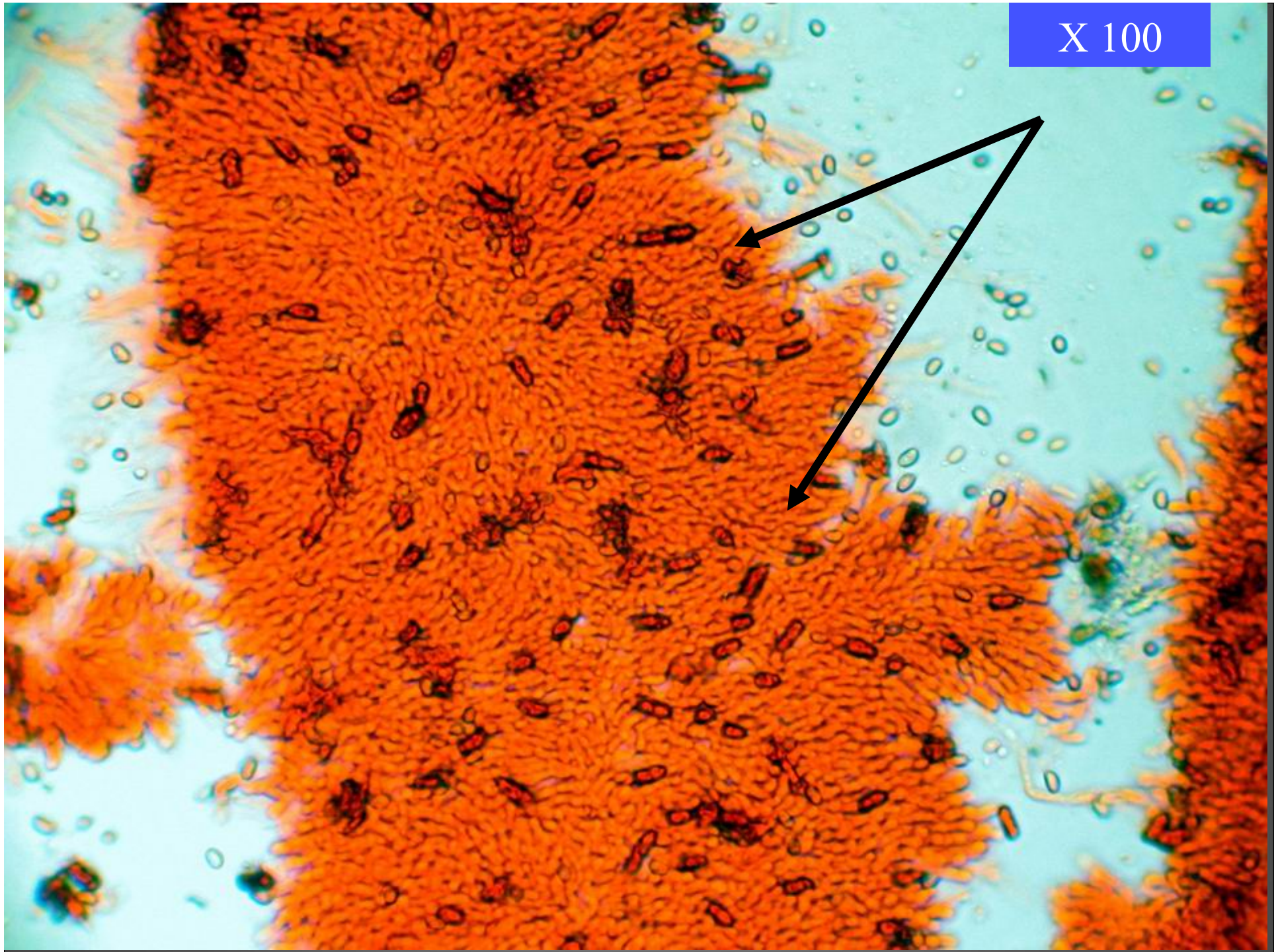
- **les Strophaires**
- **les Hypholomes**



Vérifier la présence de  
**CHRYSOCYSTIDES** : cystides  
refermant une vacuole qui contient  
un liquide fortement réfringent,  
nettement plus visible sur des  
exsiccata.



X 100

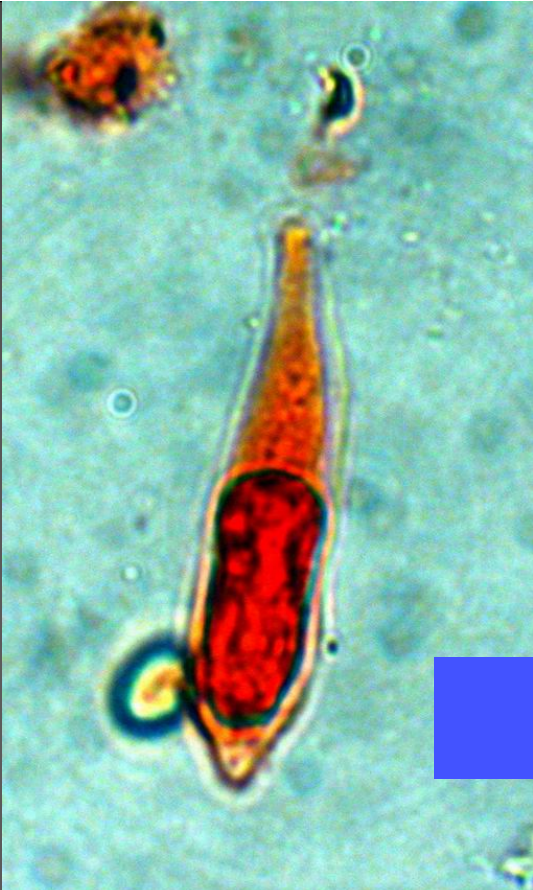






Contenu d'une chrysochryse, colorée à l'ammoniaque





Chrysocystides



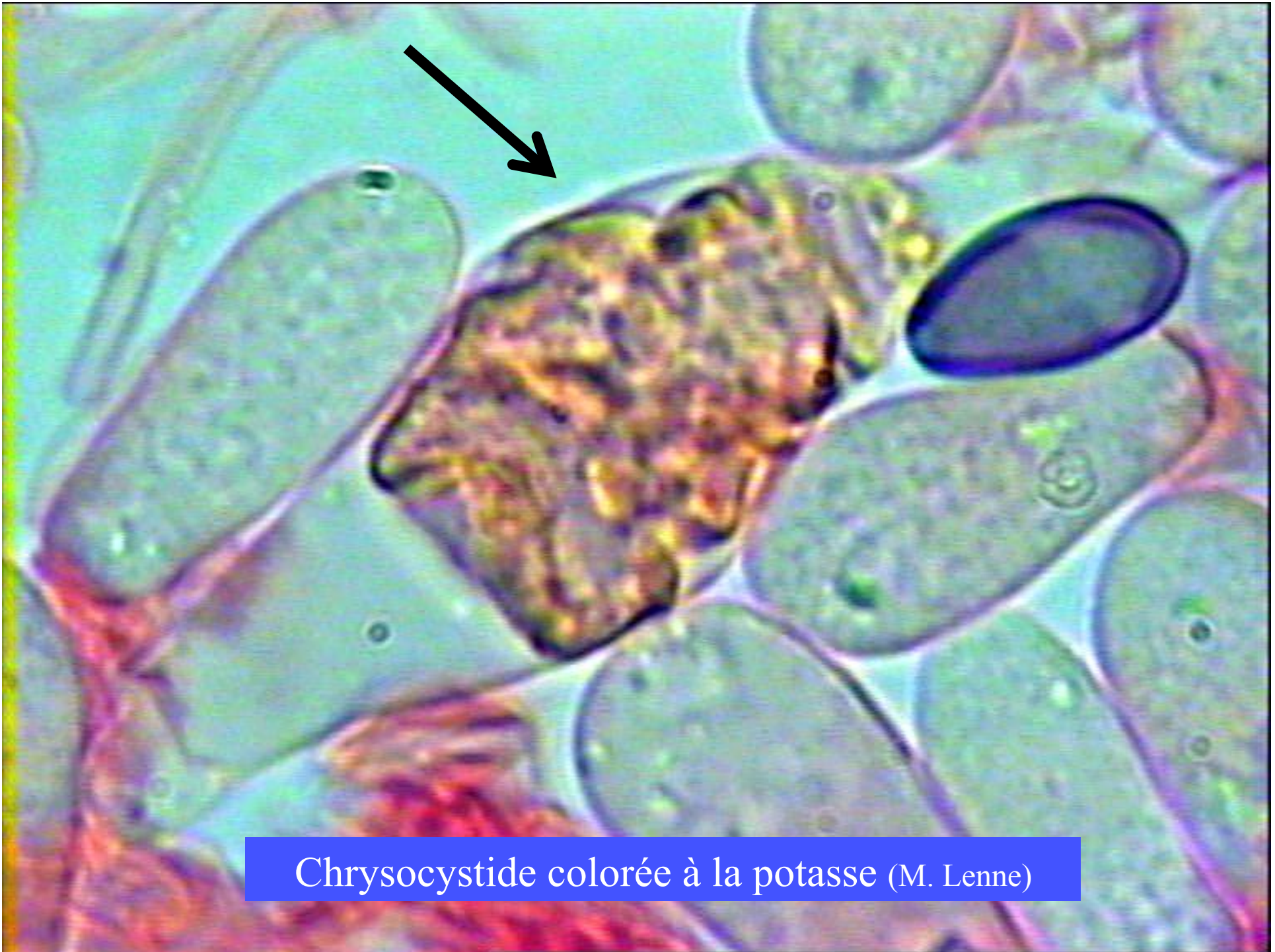


*Stropharia aurantiaca* (Cooke) Imai



Photo M. Lenne





Chrysocystide colorée à la potasse (M. Lenne)





*Hypholoma fasciculare* (Huds. : Fr.) Kummer



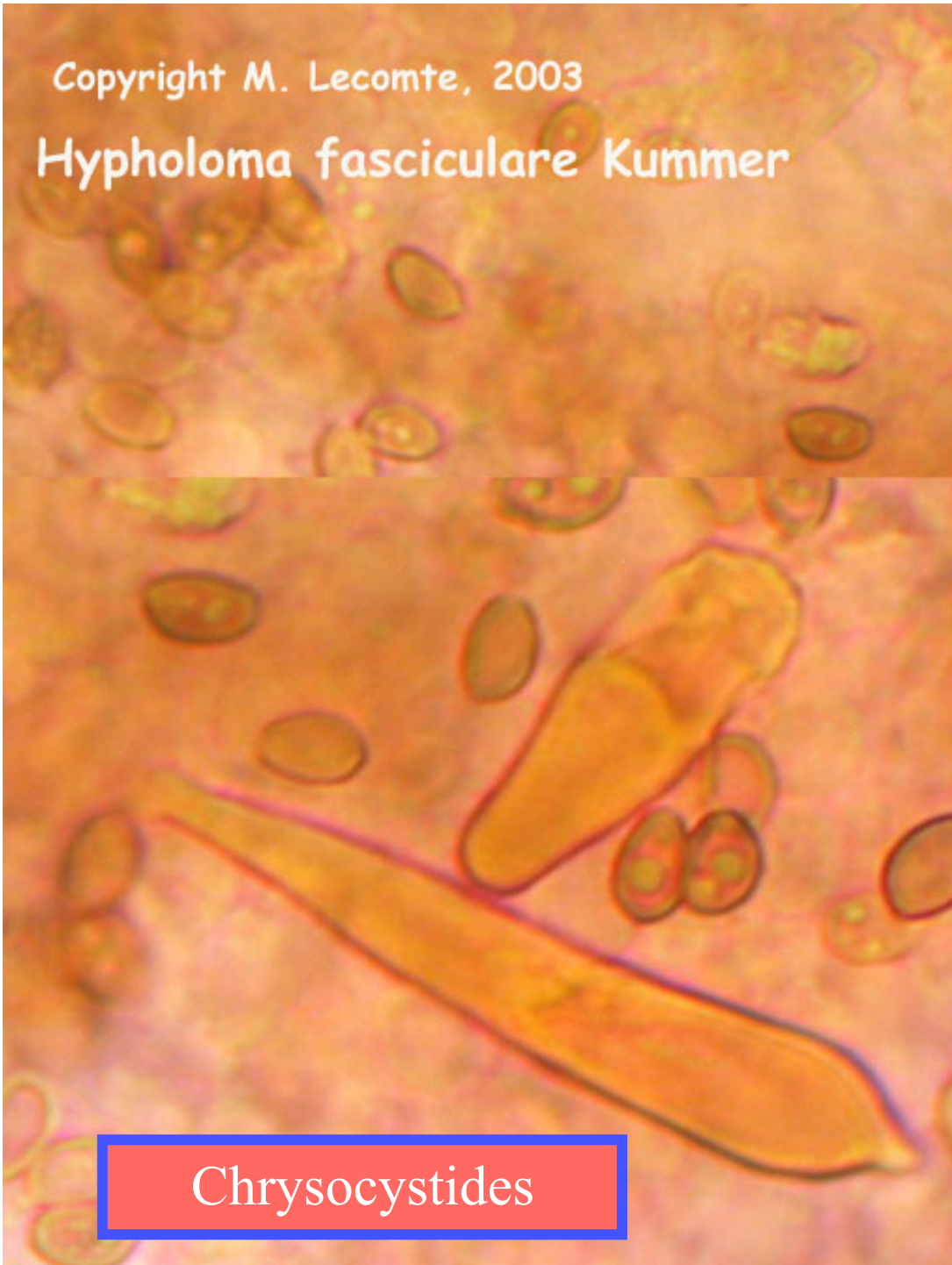
Spores : 5,5-6 x 4-4,5  $\mu\text{m}$





Copyright M. Lecomte, 2003

# Hypholoma fasciculare Kummer



Chrysocystides

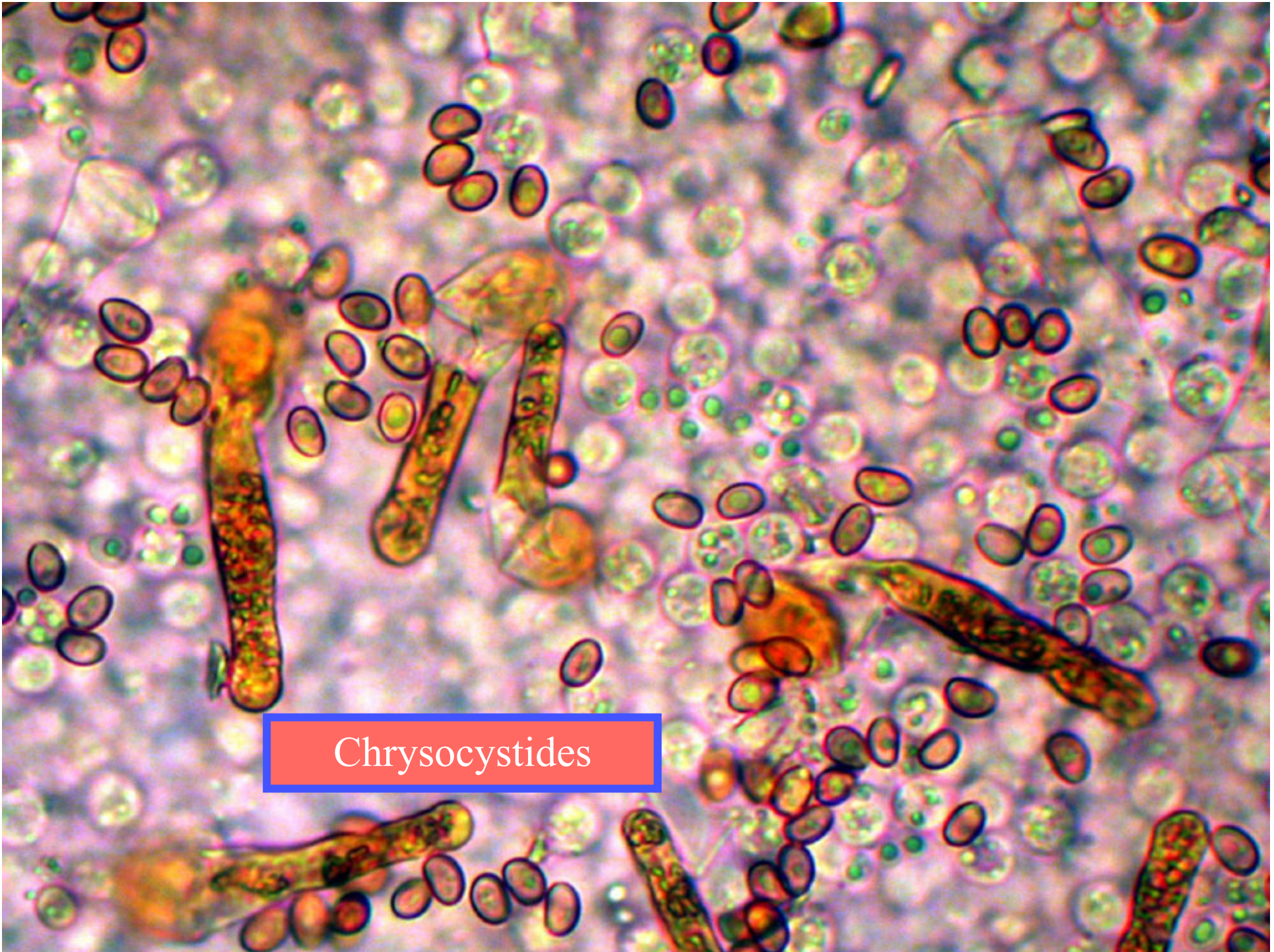






*Hypholoma lateritium* (Schiff. : Fr.) Quélet





Chrysocystides





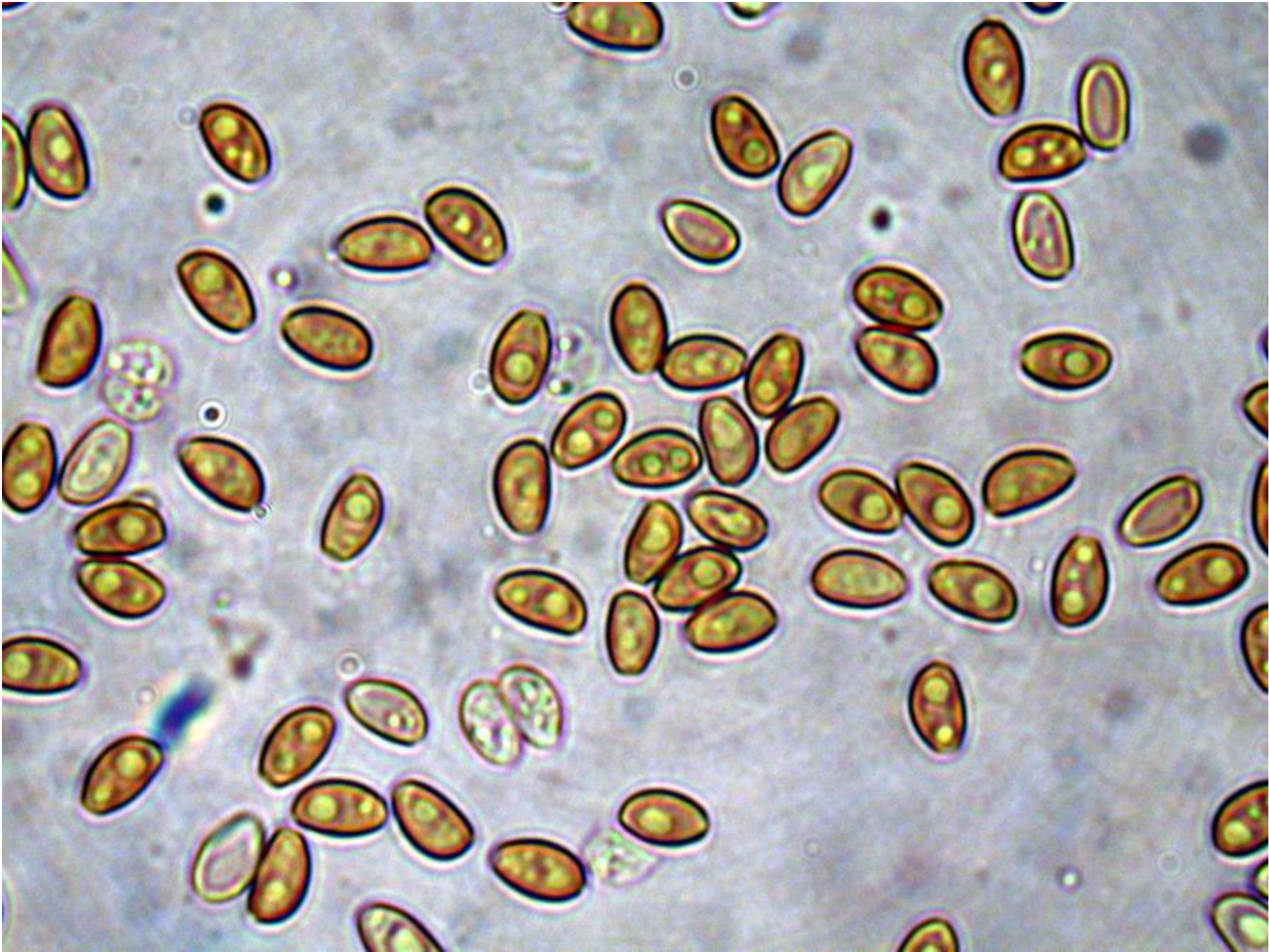
*Pholiota gummosa* (Lasch : Fr.) Singer



*Pholiota gummosa* (Lasch : Fr.) Singer











Chrysocystide

A microscopic image showing a large, elongated, spindle-shaped Chrysocystide in the center. The organism has a thick, multi-layered wall and a granular, golden-brown interior. Surrounding it are numerous smaller, oval-shaped spores, each with a distinct golden-brown core and a thin, dark outer layer. The background is a light blue, slightly textured surface.





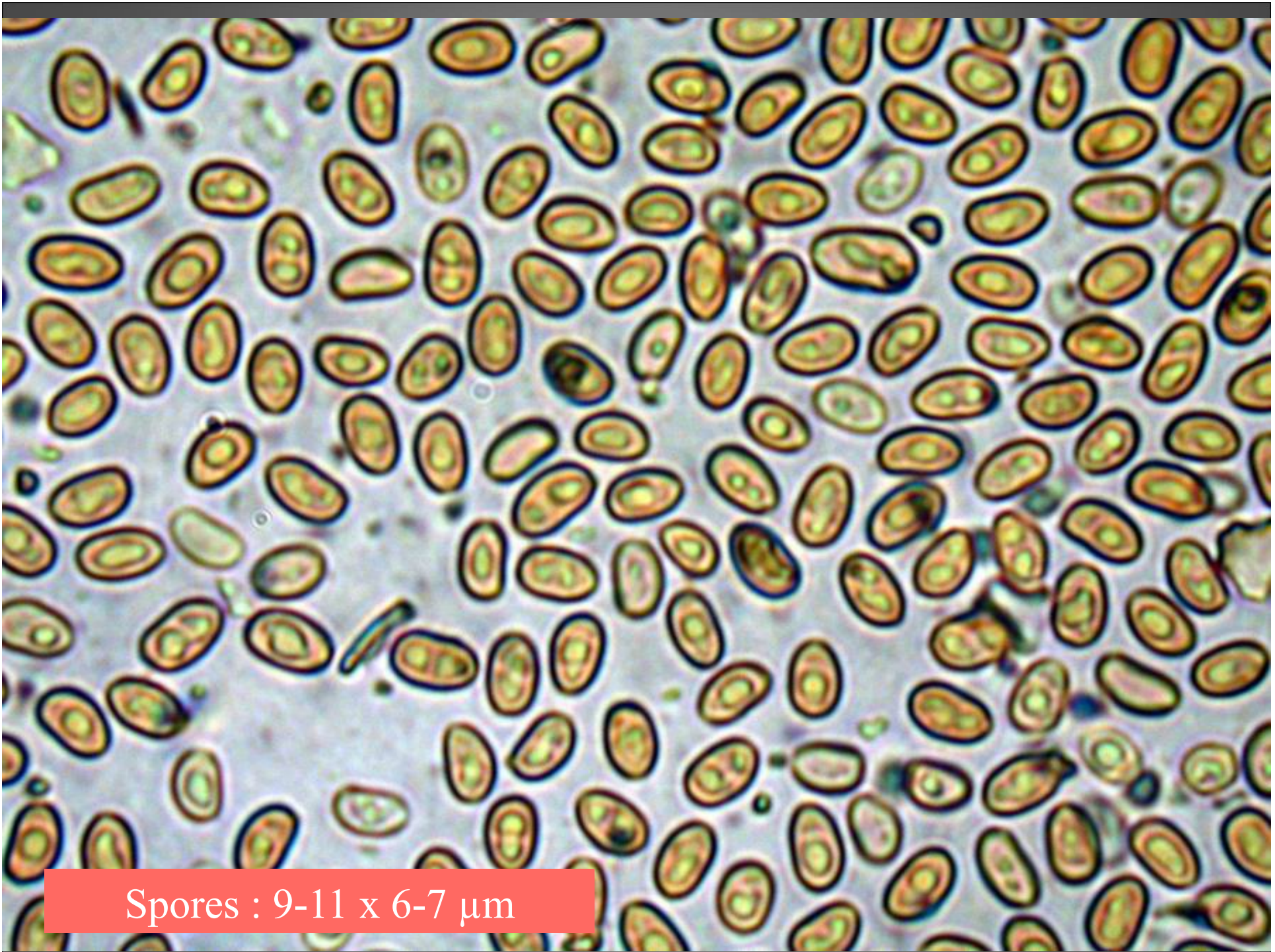
Autre genre ! Autres cystides .....



Photo P. Binaud

*Inocybe eutheles* (Berk. & Br.) Quélet

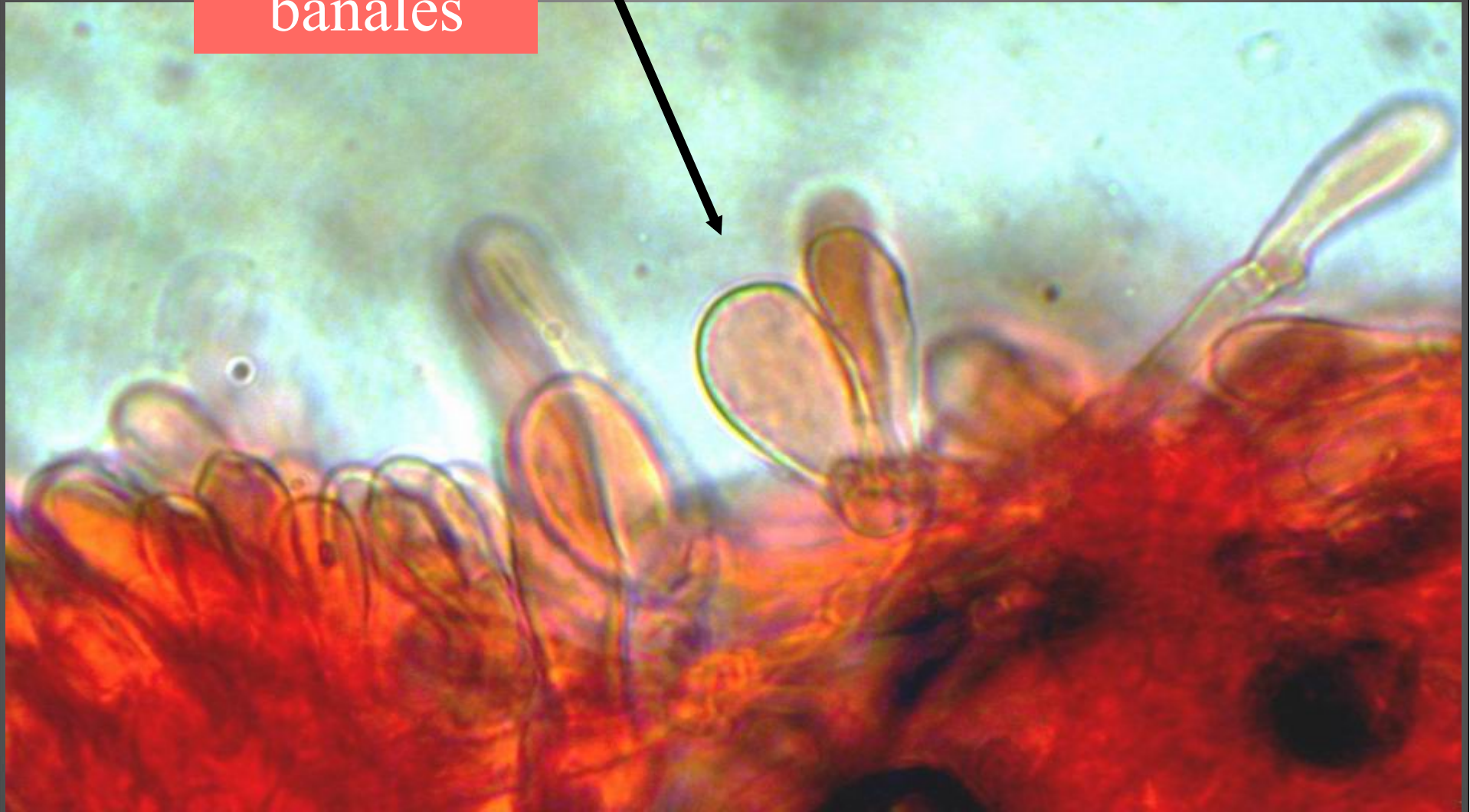




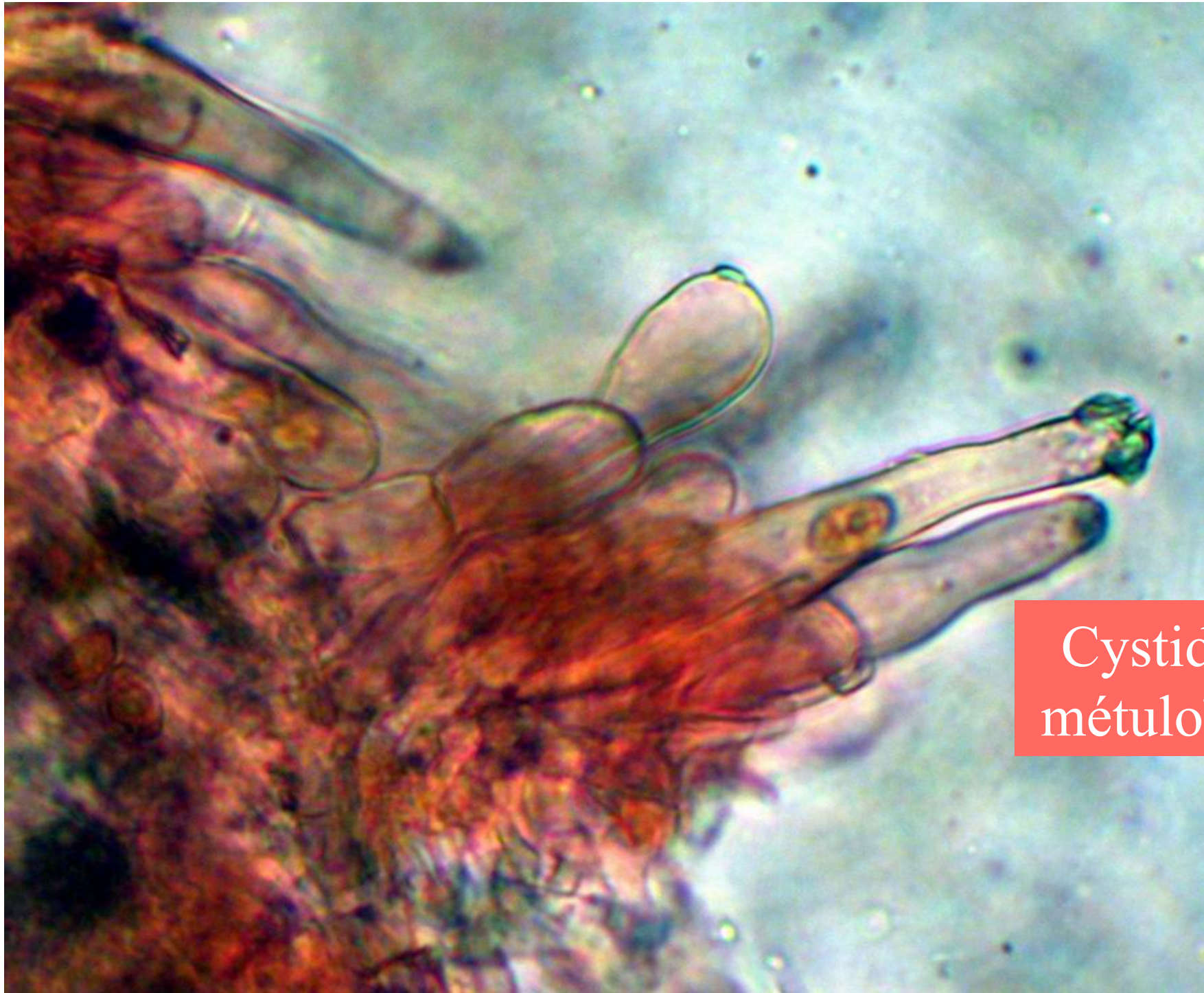
Spores : 9-11 x 6-7  $\mu\text{m}$



Cystides  
banales







Cystides  
métuloïdes





*Hohenbuehelia culmicola* Bon





**Cystide métuloïde**  
colorée au rouge Congo  
SDS





*Hohenbuehelia tremula* (Schiff. : Fr.) Thorn & Barron (= *rickenii*)



Montage à la glycérine gélatinée



Coloration au rouge Congo SDS





Double coloration à l'éosine et au bleu de crésyl



**FINN**