

Athyrella tephrophylla (Romagn.) M. M. Moser ex Bon 1983 ("1982")

Doc. mycol. 12(48): 52

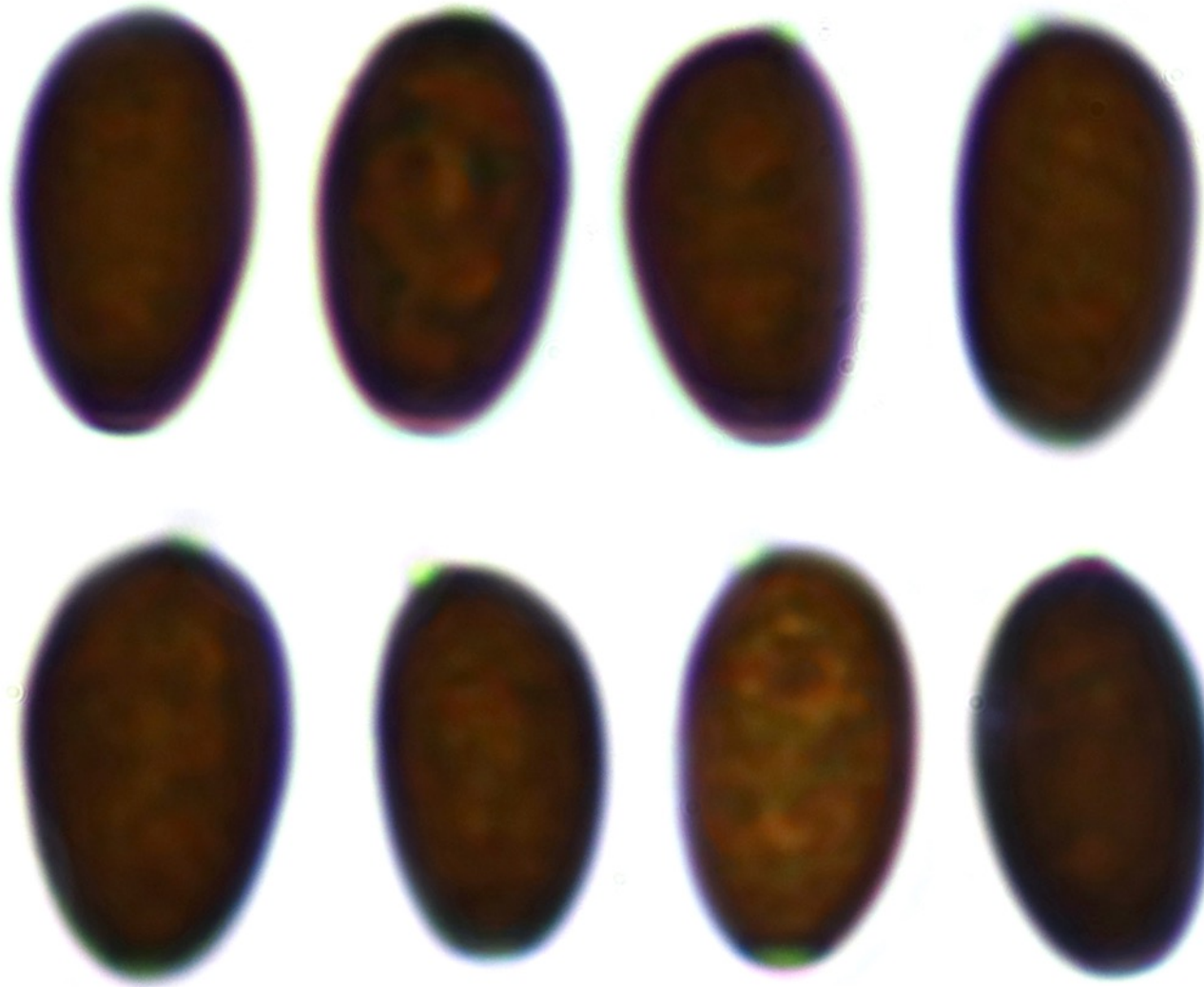


Among mulch. Diameter 50 mm. Mild dehydration. Gills large, anthracite. Stipe not rooting, base slightly expanded.

30/08/2021

Spores, dark reddish brown, opaque, germ pore central large.

Scale bar = 10 μm



N = 35

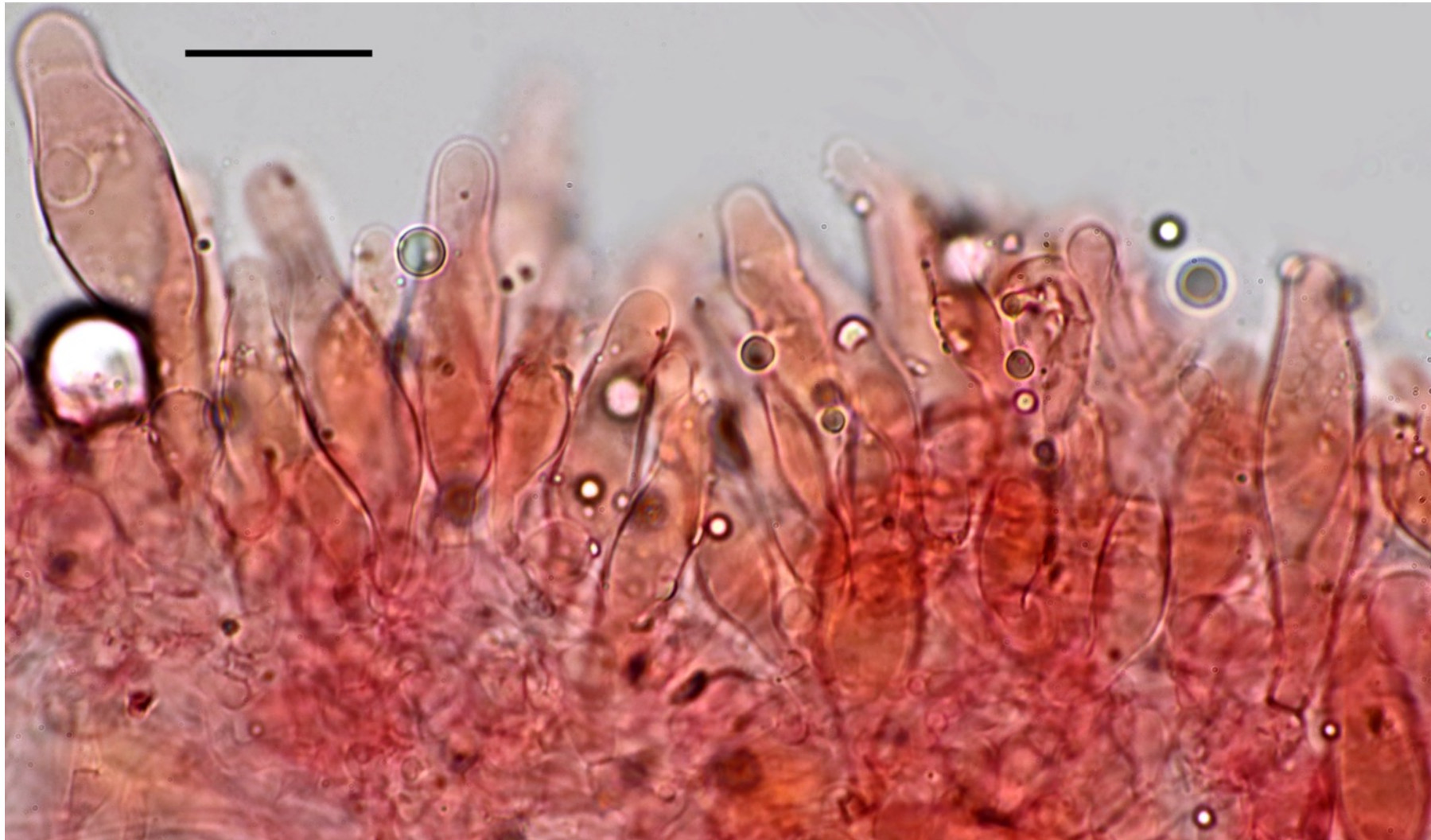
(9,6) 9,8 - 10,7 (11,3) \times (5,5) 5,8 - 6,5 (6,8) μm

Me = 10,3 \times 6,1 μm ;

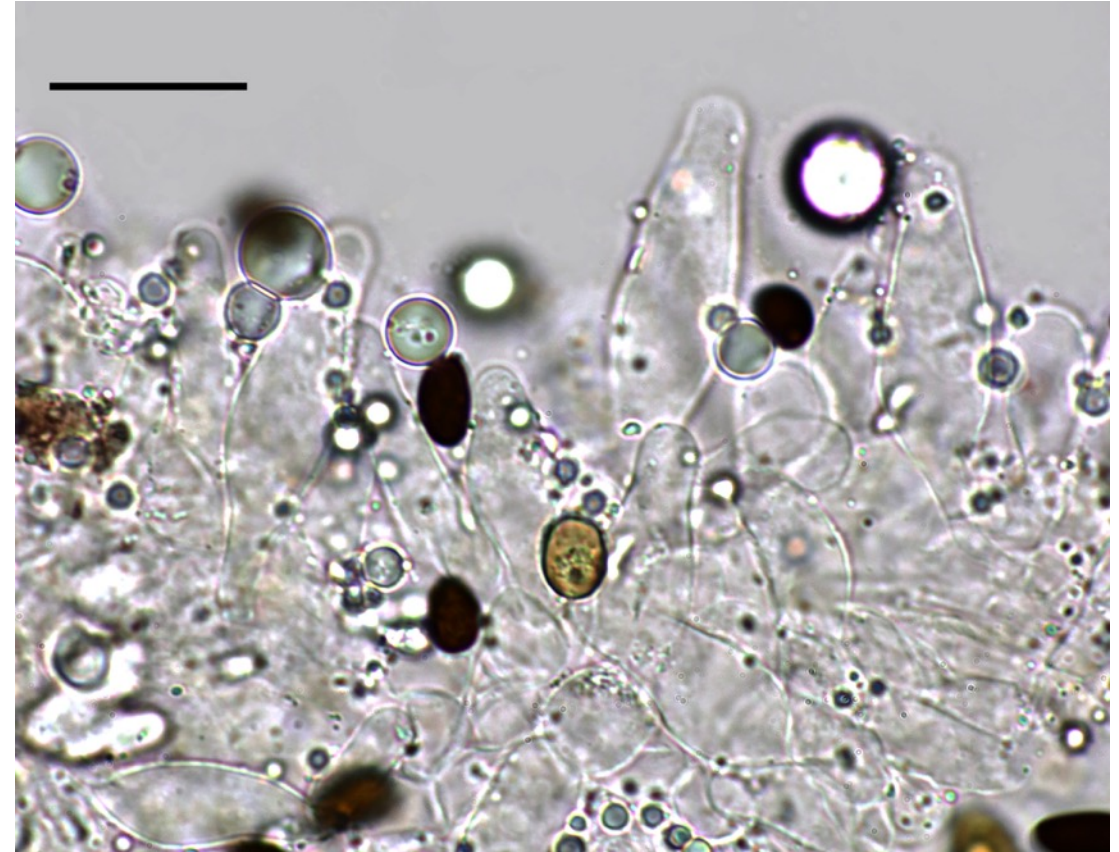
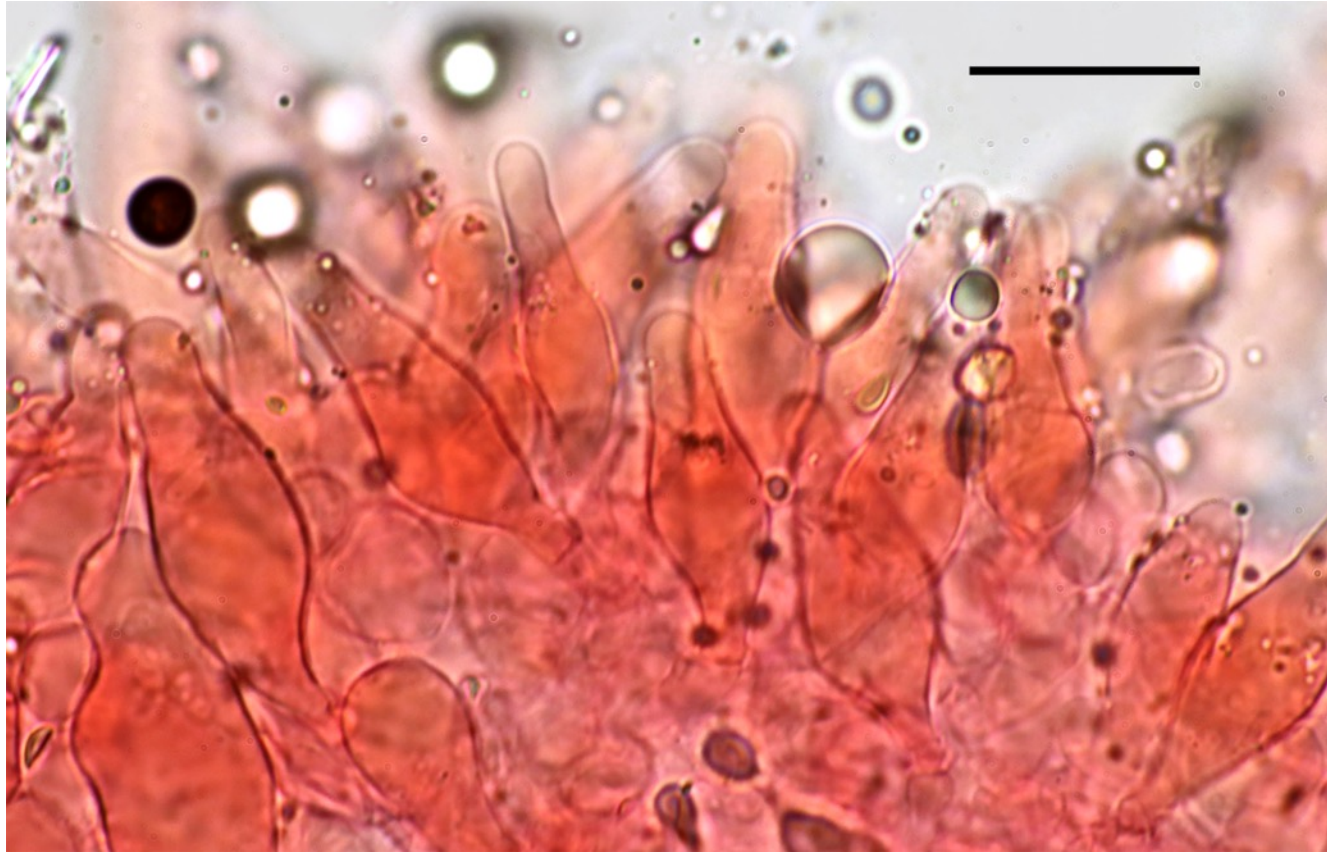
Q = (1,5) 1,6 - 1,8 (1,9) ; Qe = 1,7.

Cheilocystidia abundant, hyaline, thin-walled, highly polymorphic, lageniform to utriform, sometimes with forked top, covered with greenish mucoid drops in NH₃.

Scale bar = 20 μ m.



NH3



Scale bar = 20 μm

Pleurocystidia, numerous, thin-walled, hyaline, polymorphic, but essentially utriform.
Scale bar = 20 μm

