

Psathyrella senex, une espèce qui en cache une autre ? Psathyrella senex, a species which hides another one ?

Author's: D. Deschuyteneer and Dieter Wächter for the molecular part.

***Psathyrella senex* (Peck) A. H. Sm. 1972**

in Memoirs of the New York Botanical Garden 24: 230 (1972)

MycoBank: 321366

Basionym: *Psilocybe senex* Peck 1888 in Rep. New York State Mus. 41: 70

Synonymy according to Index fungorum

Psilocybe senex Peck, Rep. (Annual) Trustees State Mus. Nat. Hist., New York 41: 70 (1888)

Psathyra senex (Peck) Morgan, J. Mycol. 13(4): 151 (1907)

Psathyra fibrillosa sensu Lange; fide Checklist of Basidiomycota of Great Britain and Ireland (2005)

Psathyrella fibrillosa sensu Maire; fide Checklist of Basidiomycota of Great Britain and Ireland (2005)

Drosophila ocellata Romagn., Bull. mens. Soc. linn. Soc. Bot. Lyon 21: 154 (1952)

Psathyrella ocellata (Romagn.) M.M. Moser, in Gams, Kl. Krypt.-Fl., Edn 3 (Stuttgart) 2b/2: 222 (1967)

Psathyrella friesii Kits van Wav., *Persoonia* 9(2): 282 (1977)

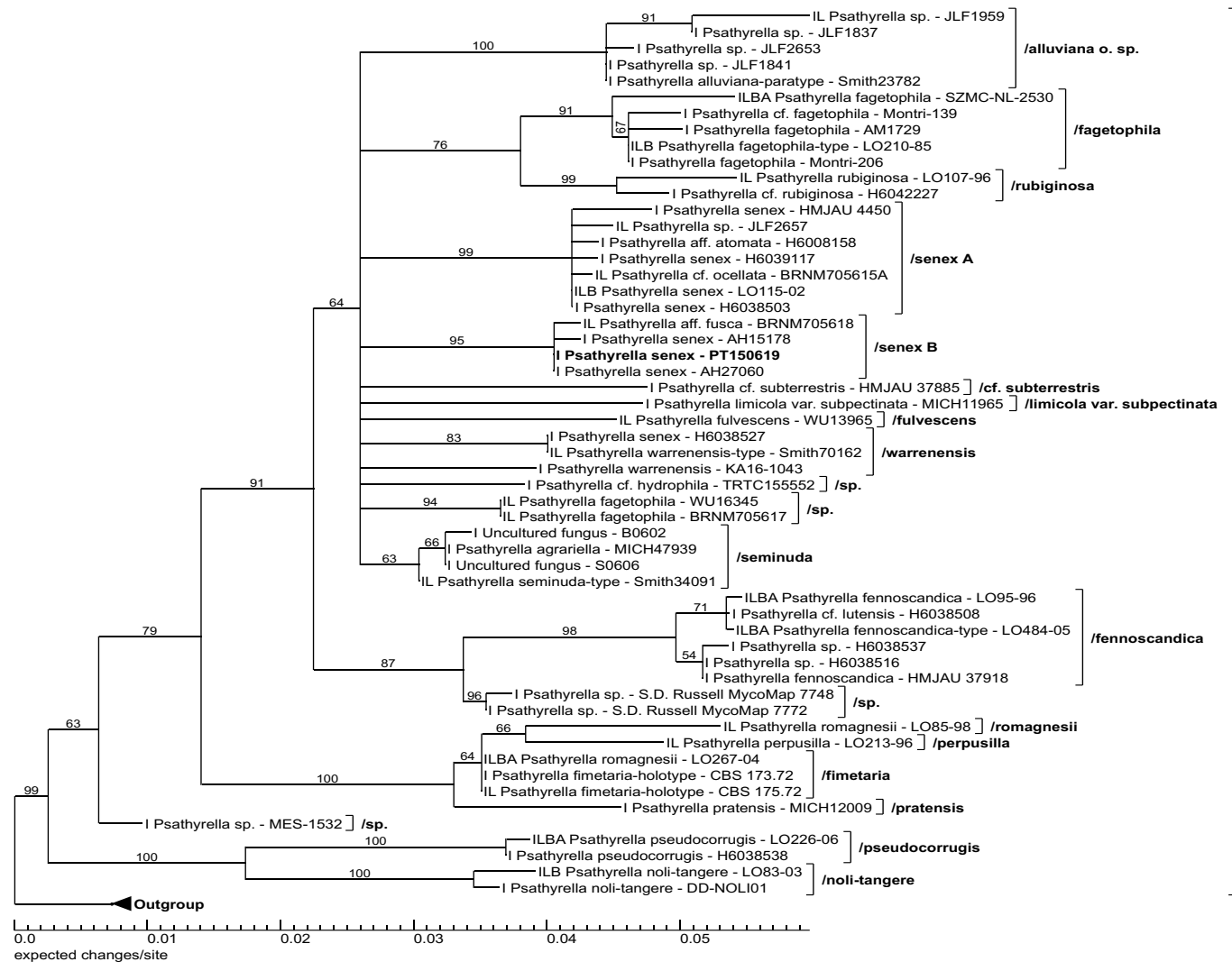
Psathyrella trivialis Arnolds, *Bibliotheca Mycol.* 90: 437 (1982)

Psathyrella fulvescens var. *brevicystis* Kits van Wav., *Persoonia*, Suppl. 2: 281 (1985)

Psathyrella ploddensis Kits van Wav., *Persoonia* 13(3): 357 (1987)

Psathyrella senex group A

Author's: D. Deschuyteneer, Dieter Wächter.



← Group A & B

Psathyrella senex group A

Leg Leandro sanchez



Photo in situ & micro Leandro Sanchez – Spain - **Genbank : MZ031395**

Sur restes de bois de *Acacia dealbata*, jusqu'à 22 mm diamètre.

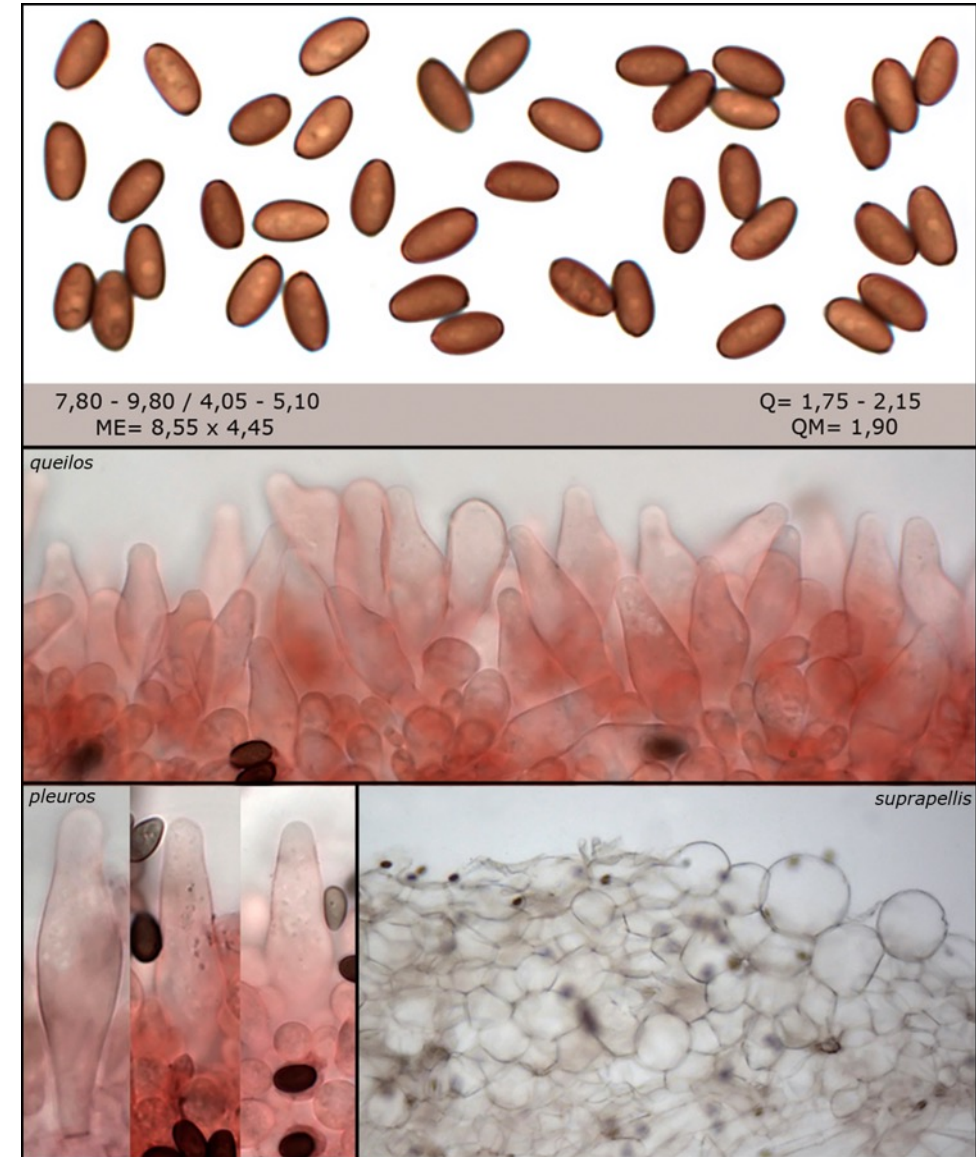
On remnants of *Acacia dealbata* wood.

Basides clavées tétrasporiques. Basidia clavate, 4-spored ; 22-25 x 7-9 μm .

Cheilocystides abondantes. Cheilocystidia numerous ; 32-40 x 9-15 μm .

Pleurocystides nombreuses. Pleurocystidia numerous ; 37-48 x 11-13 μm .

Boucles présentes. Clamps present.

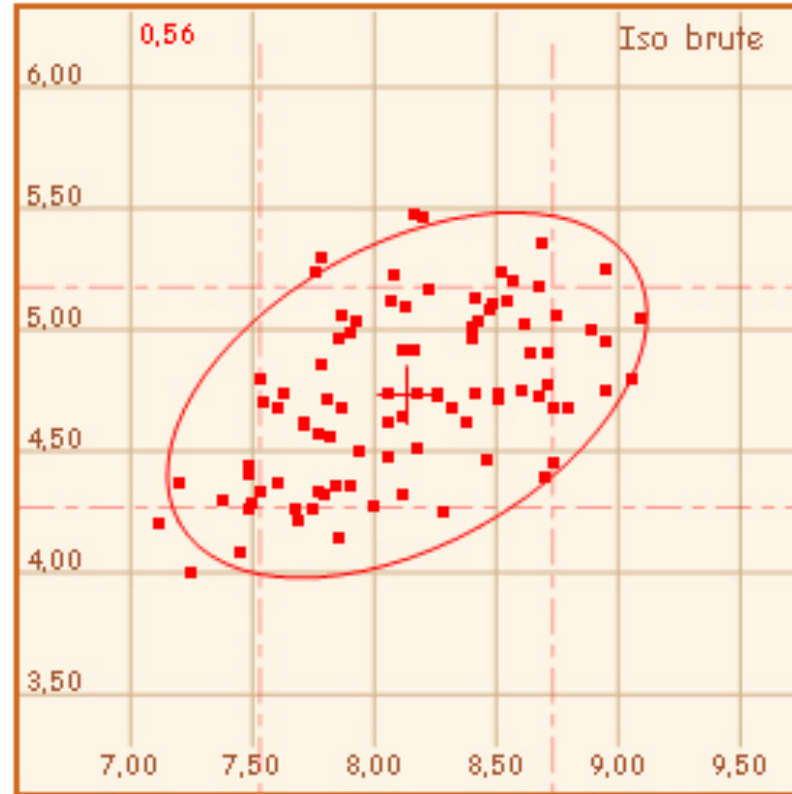
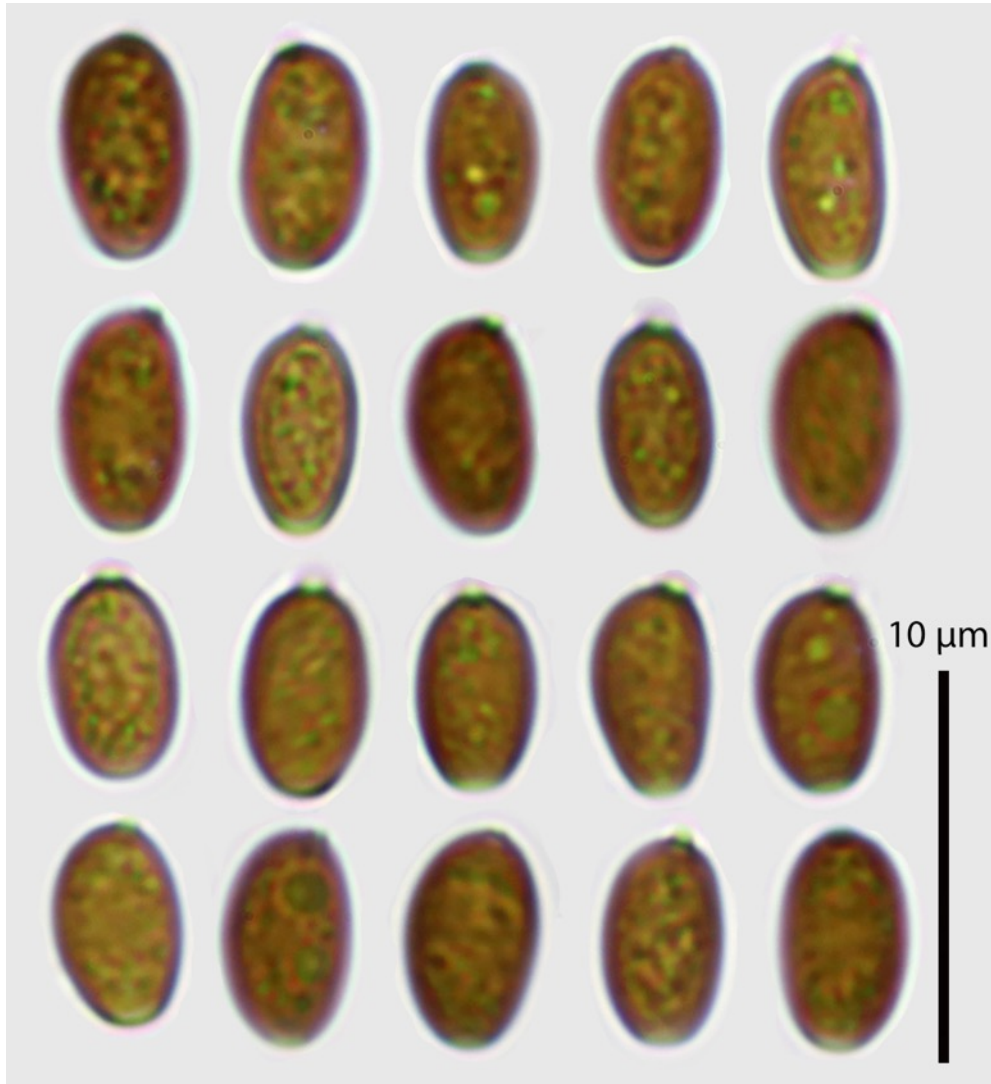


Spores lisses, brun jaunâtre moyen, ellipsoïdes de face, asymétriques et légèrement amygdaliformes de profil, pore germinatif central distinct, large, convexe.

Boucles présentes.

Spores smooth, medium yellowish brown, ellipsoid in front view, asymmetrical and slightly amygdaliform in profile, with a distinct, broad, convex central germ pore.

Clamps present.



N = 90

(7,1) 7,5 - 8,7 (9,1) × (4) 4,3 - 5,2 (5,5) µm ;

Me = 8,1 × 4,7 µm ;

Q = (1,5) 1,6 - 1,9 (2) ; Qe = 1,7

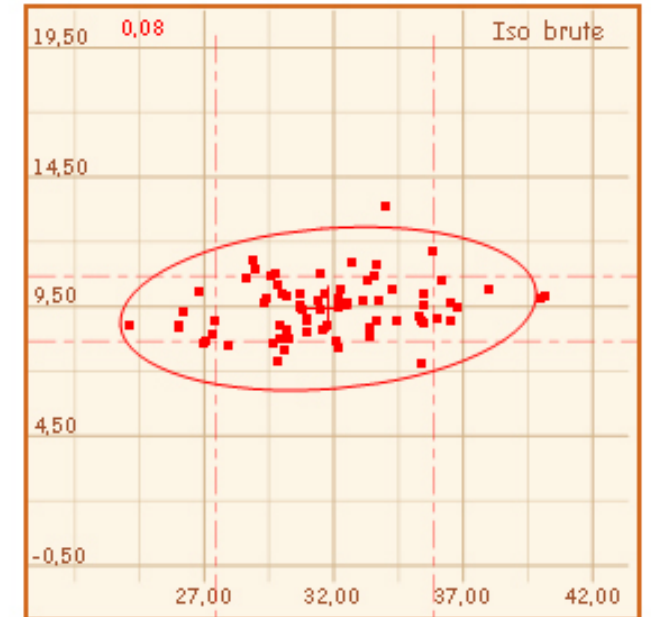


Cheilocystides abondantes, hyalines, à paroi fine, lagéniformes et sub-utriformes, à sommet obtus.

Paracystides ou basidioles clavés, bouclés, nombreux, de petites dimensions, à paroi fine

Cheilocystidia abundant, hyaline, thin-walled, lageniform and sub-utriform, with obtuse apex.

Paracystidia or basidioles clavate, clamped, numerous, small, thin-walled



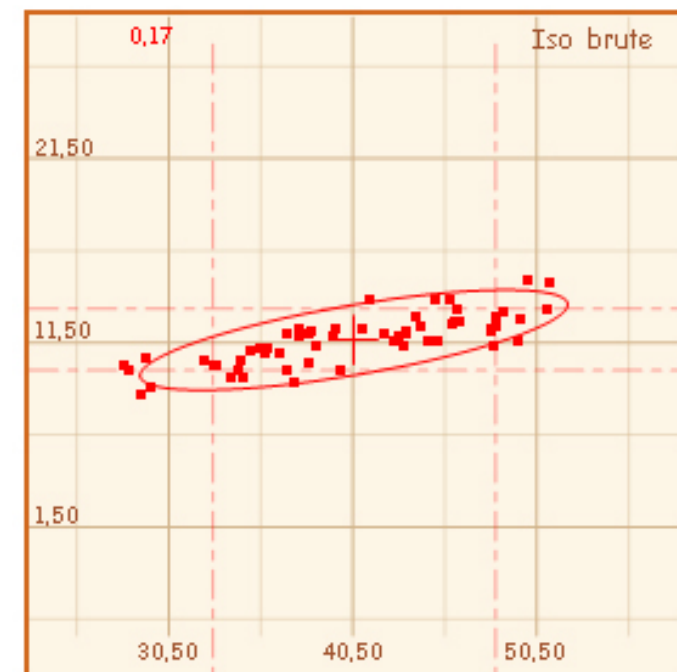
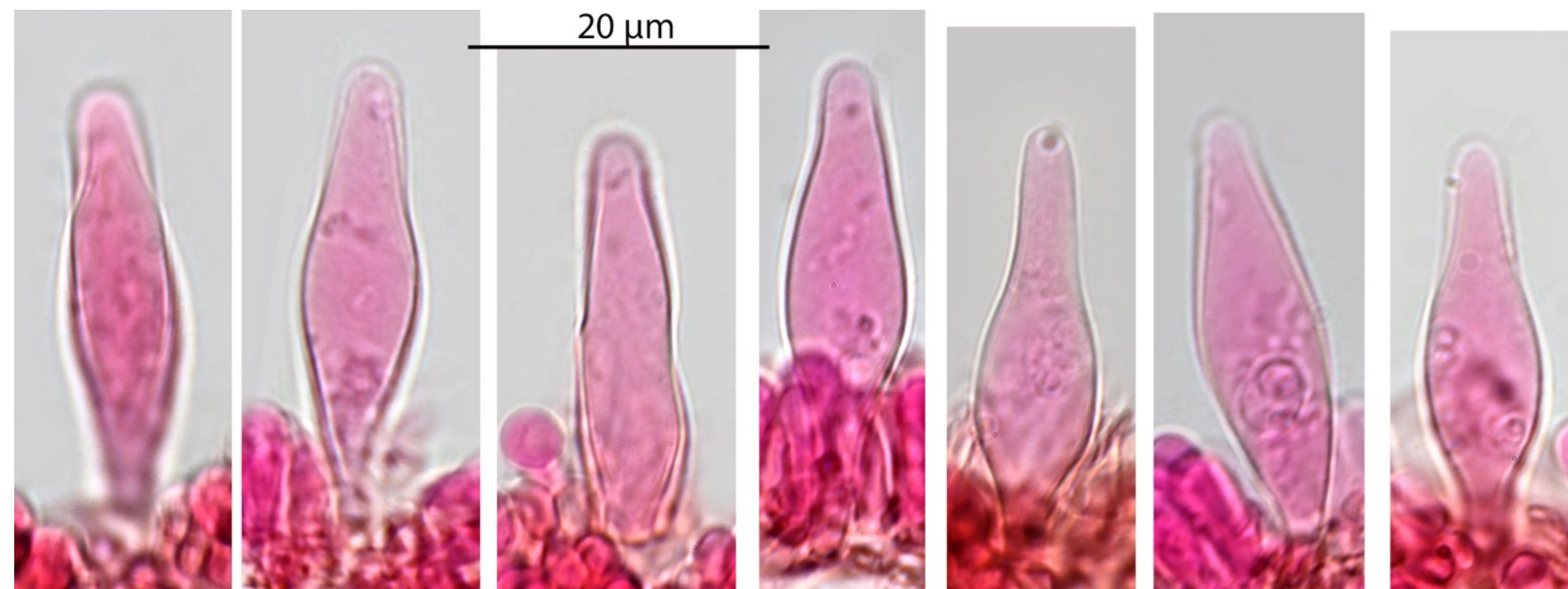
N = 75

(24,1) 27,4 - 35,9 (40,2) × (7,3) 8,2 - 10,7 (13,4) μm

Me = 31,8 × 9,4 μm

Pleurocystides très nombreuses, hyalines, à paroi fine, analogues aux cheilocystides.
Pleurocystidia very numerous, hyaline, thin-walled, similar to cheilocystidia

N = 60
(28,1) 32,9 - 48,3 (51,3) × (8,6) 10 - 13,3 (14,9) μm
Me = 40,6 × 11,6 μm.



Pileipellis, un hymenoderme constitué de une couche de cellules globuleuses.

Pileitrame constitué de fibres cylindriques, nettement pigmentées de brun jaunâtre.

Pileipellis, an hymeniderm consisting of one layer of globular cells.

Pileitrama consisting of cylindrical fibers, brightly pigmented with yellowish brown.

Psathyrella senex group B

Psathyrella PT150619 in the phylogram – Genbank : MN657231 - leg Patrice Tanchaud



Récolte de Patrice 03/2017 – Charente-Maritime – commune de Ste Gemme

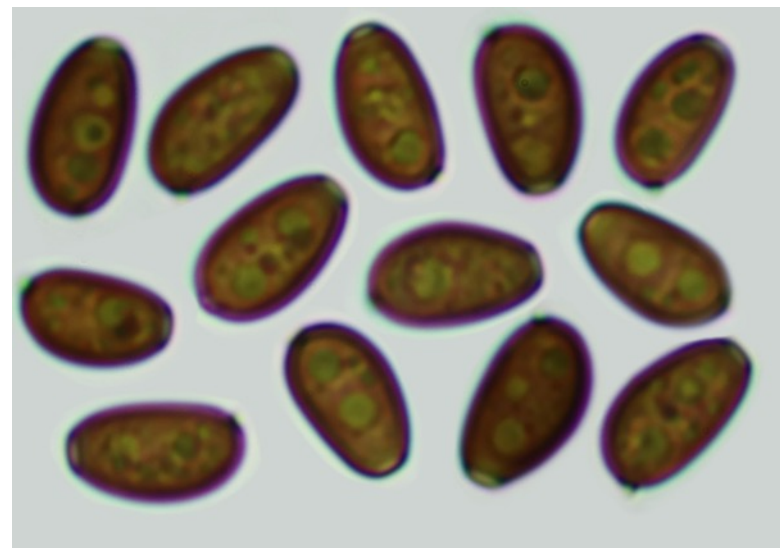
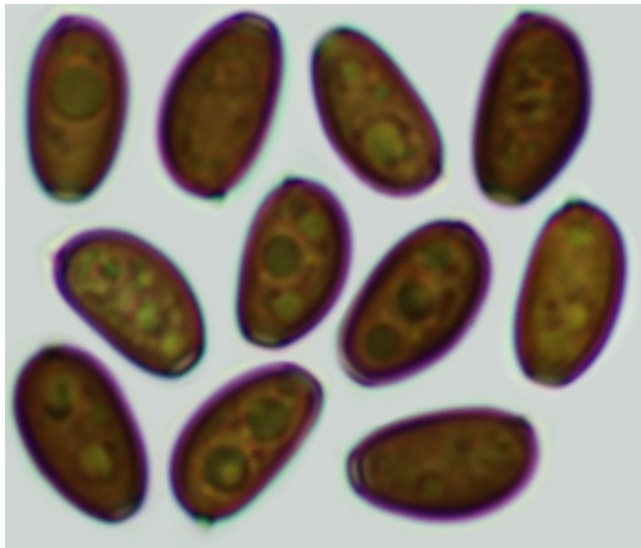
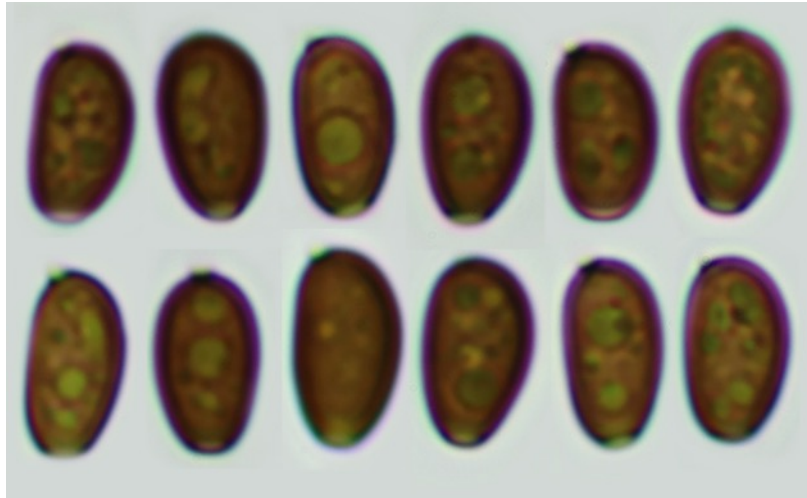
Chapeau de 4 -15 mm de diamètre – écologie salbulicole.

Cap diameter : 4-15 mm on sandy soil. 2019-1420-ALV21789 PT150619 = ok, 100% Psathyrella senex (MF966488)

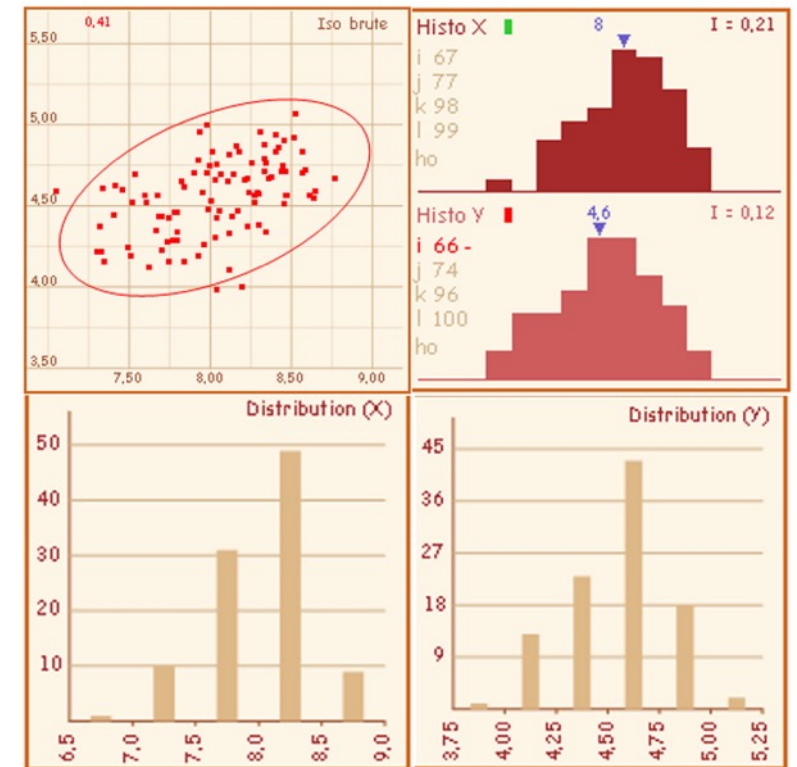
<https://www.mycharentes.fr/pdf1/2934.pdf>

Spores lisses, à paroi fine, brun foncé dans l'eau et l'ammoniaque, grisâtre dans la potasse, non opaques, contenant parfois de multiples gouttes lipidiques, oblongues à ellipsoïdes de face, asymétriques de profil et alors simplement « aplaties » (je cherche un meilleur qualificatif) ou légèrement amygdaliformes. Sommet de la spore conique à convexe avec un large pore germinatif central parfois tronqué. Pas de spores phaséoliformes ou présentant une dépression suprahilaire.

Spores smooth, thin-walled, dark brown in water and ammonia, greyish in KOH, not opaque, sometimes containing multiple lipid drops, oblong to ellipsoidal in front view, asymmetric in profile and then simply flattened or slightly amygdaliform, apex conical to convex with a large central germ pore sometimes truncated. No phasedoliform spores or with suprahilar depression.

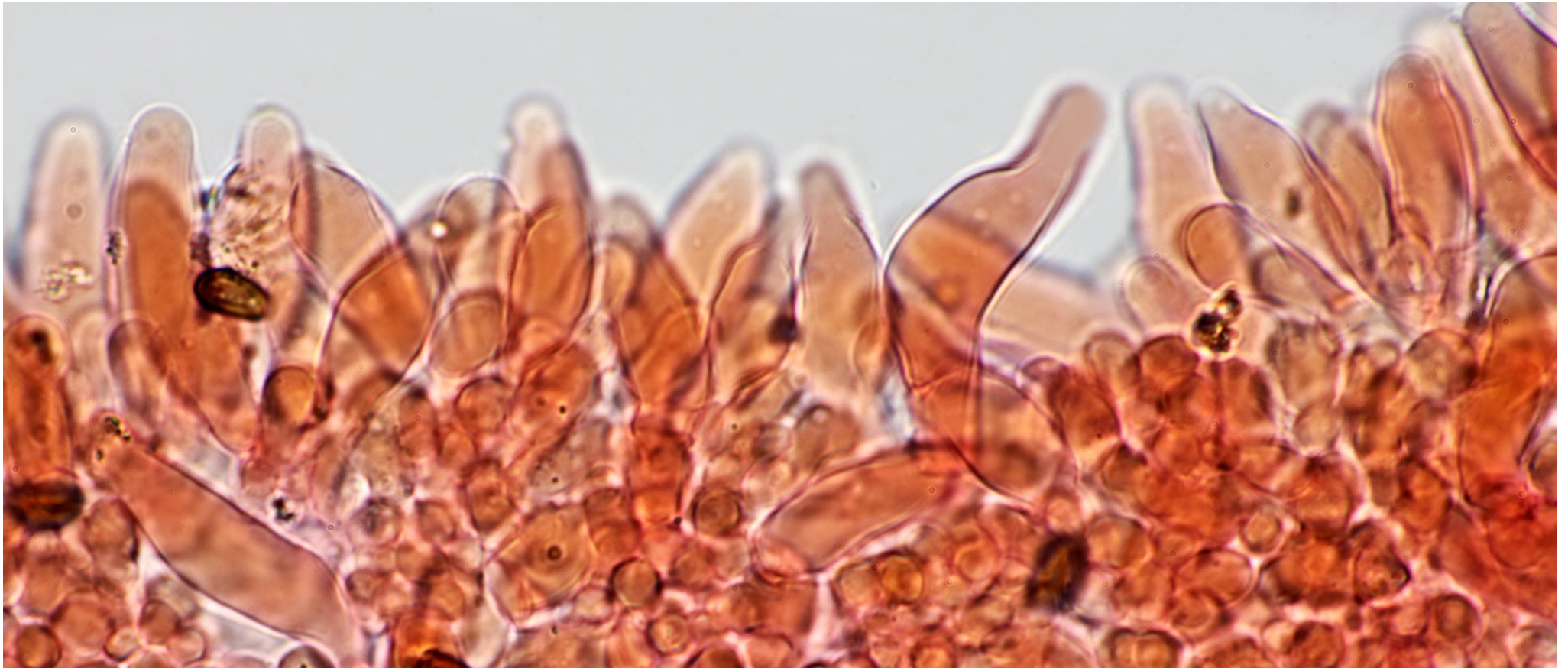


Spores mesurées avec Piximètre : (N = 100)
 (6,9) 7,5 - 8,5 (8,8) × (4) 4,2 - 4,8 (5,1) μm
Me = 8 × 4,6 μm
 Q = (1,5) 1,7 - 1,9 (2,1) ; **Qe = 1,8**



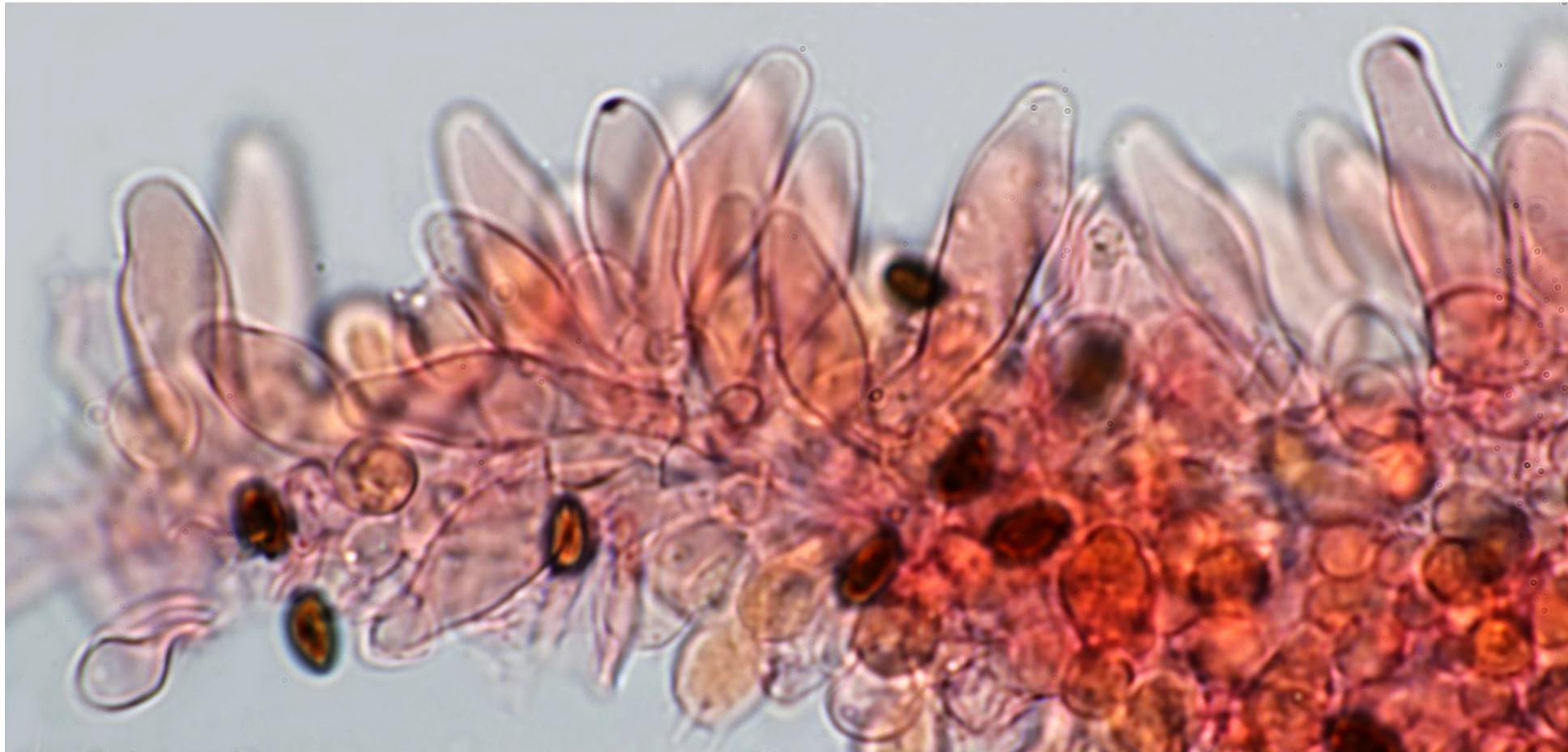
Cheilocystides hyalines, à paroi fine, généralement très denses et réparties uniformément tout au long de l'arête. Toutefois sur certaine lames elles sont davantage éparses, voire clairsemées. Elles sont essentiellement de type ventruées ou lagéno-ventruées, moins souvent lagéniformes ou cylindriques, parfois légèrement rétrécies au sommet largement obtus avec parfois une amorce de col, peu ou pas pédicellées.

Les cellules marginales clavées (**paracystides** ou **basidioles**) de petites dimension sont peu fréquentes même à proximité de la marge du chapeau, parfois à paroi épaisse brunâtre. L'arête est dans ce cas soulignée de fibres brunâtres (Voir page 9)



Mesures des cheilocystides : (N=81) ; (20,4) 25,3 - 35,6 (40) × (7,9) 8,5 - 10,8 (11,6) μm ; Me = 29,7 × 9,5 μm .

Cheilocystidia hyaline, thin-walled, generally very dense and uniformly spread along the edge. However, on some gills they are more scattered, even sparse. They are essentially of the utriform or lageno-utriform type, less often lageniform or cylindrical, sometimes slightly narrowed at the top with a broad short neck and an obtuse apex, not or only slightly pedicellate. Smaller, clavate marginal cells (paracystidia or basidioles) are sparse even near the margin of the cap, sometimes with a thick brownish wall. In this case, the edge is underlined with brownish fibrils (See page 9).



Measures of the cheilocystidia : (N=81) ; (20,4) 25,3 - 35,6 (40) × (7,9) 8,5 - 10,8 (11,6) μm ; Me = 29,7 × 9,5 μm.

Comme indiqué dans la description de l'espèce par Melzer, sur une des lames examinées et à proximité de la marge du chapeau, les cheilocystides sont soulignées de fibres brunâtres, et les paracystides sont teintées de brun et à paroi épaisse brunâtre.

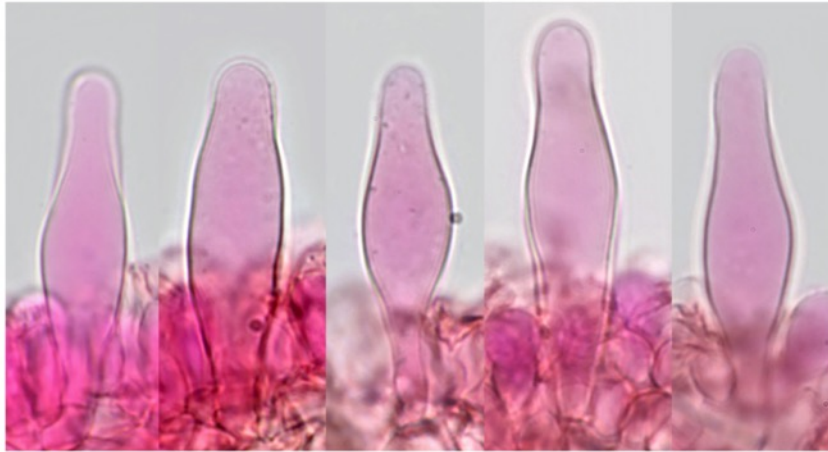
As indicated in Melzer's description of the species, on one of the gill examined and near the margin of the cap, the cheilocystidia are underlined with brownish fibres, and the paracystidia are brownish with a thick brownish wall.



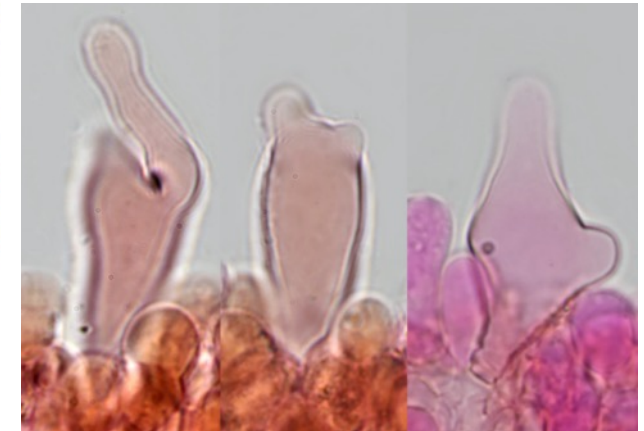
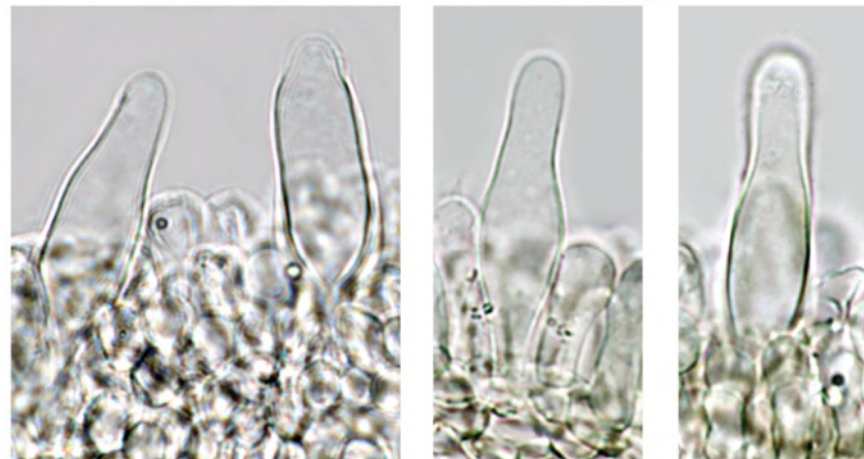
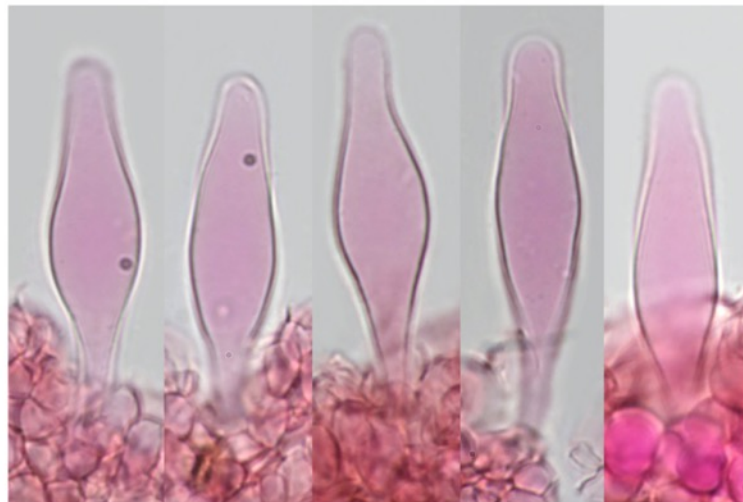
Pleurocystides à paroi fines, très nombreuses, lageniformes,, à long col s'atténuant progressivement jusqu'au sommet obtus ou subobtuse, le plus souvent nettement pédicellées. Quelques pleurocystides peu fréquentes à sommet fourchu et à paroi modérément épaissie. Quelques pleurocystides peu fréquentes à sommet fourchu et à paroi modérément épaissie.

Pleurocystidia thin-walled, very numerous, lageniform, with a long neck that gradually attenuates, apex obtuse or subobtuse, most often pedicellate. Some rare pleurocystidia with forked apex and moderately thickened walls.

Some rare pleurocystidia with forked apex and moderately thickened walls.



Mesures des pleurocystides : (N = 50)
(29,5) 34,2 - 43,9 (50,4) × (8,7) 9,3 - 11,1 (11,8) μm
Me = 39,6 × 10,2 μm



Psathyrella senex group B

Psathyrella AH 15178 – leg Gabriel Moreno

Identified by G. Moreno and Michel Heykoop as *Psathyrella senex* (Peck) A. H. Smith

One complete very fragile exsiccatum in low condition - Removal of 2 gills for microscopic study.

Psathyrella senex (Peck) A.H. Sm.

GUADALAJARA, Tamajón, entre restos leñosos y acículas de *Pinus nigra* subsp. *salzmannii* en suelo arenoso, 25-X-1992, leg. M. Heykoop, **AH 15178**, secuencia de ITS en GenBank MF966484.

Drawings and notes M. Heykoop

Polysphincta *pubescens* var *breviseta* *Witt* var *nov.*

Loc. Toluca (Gu)	Dat. 25-X-1992
Hab. entre arboles leñosos y acacia de <u>Puu</u> <u>ni pre</u> <u>isp</u> <u>holmenii</u> en medio el p. arbores	
Leg. M. Heykoop	Det. M. Heykoop
N.º 15.178	

1. IX. 03
Chelid abundante, atípico.
 con numerosas hinas, etc. *Chelid*
 D/W 1. IX. 03
 67
 2 esp. exp.

~~...~~
 esp. elip., poco por visible,
 por do orales al NH₄OH, o (m) simple
 hinas

8'2	8	8	8'5	9'5	8	8	9	8	8'5
5	5	5'5	4'5	5	5	4'8	5	5	5

FOTO 2

Bx
 Chelid

¿hinas más al
 fecer??

3'5	8	8	8	8	8'5	9
5	5	5	5	5	5	5
8	8	8	9'5	9	10	
5	5	5	5	5	5'5	

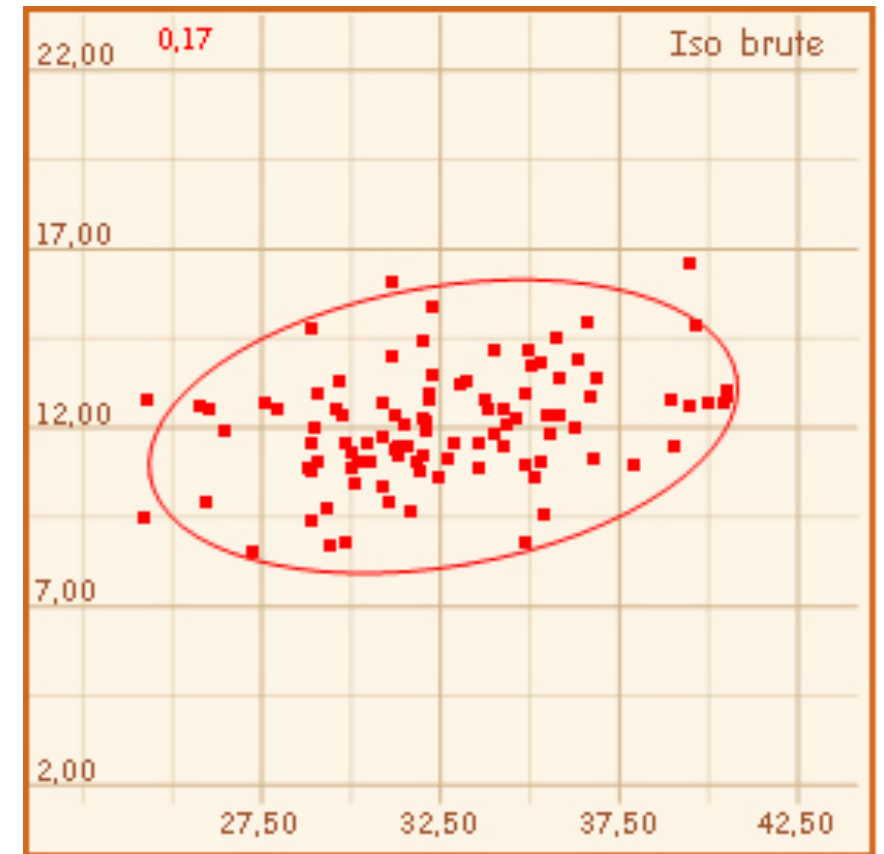
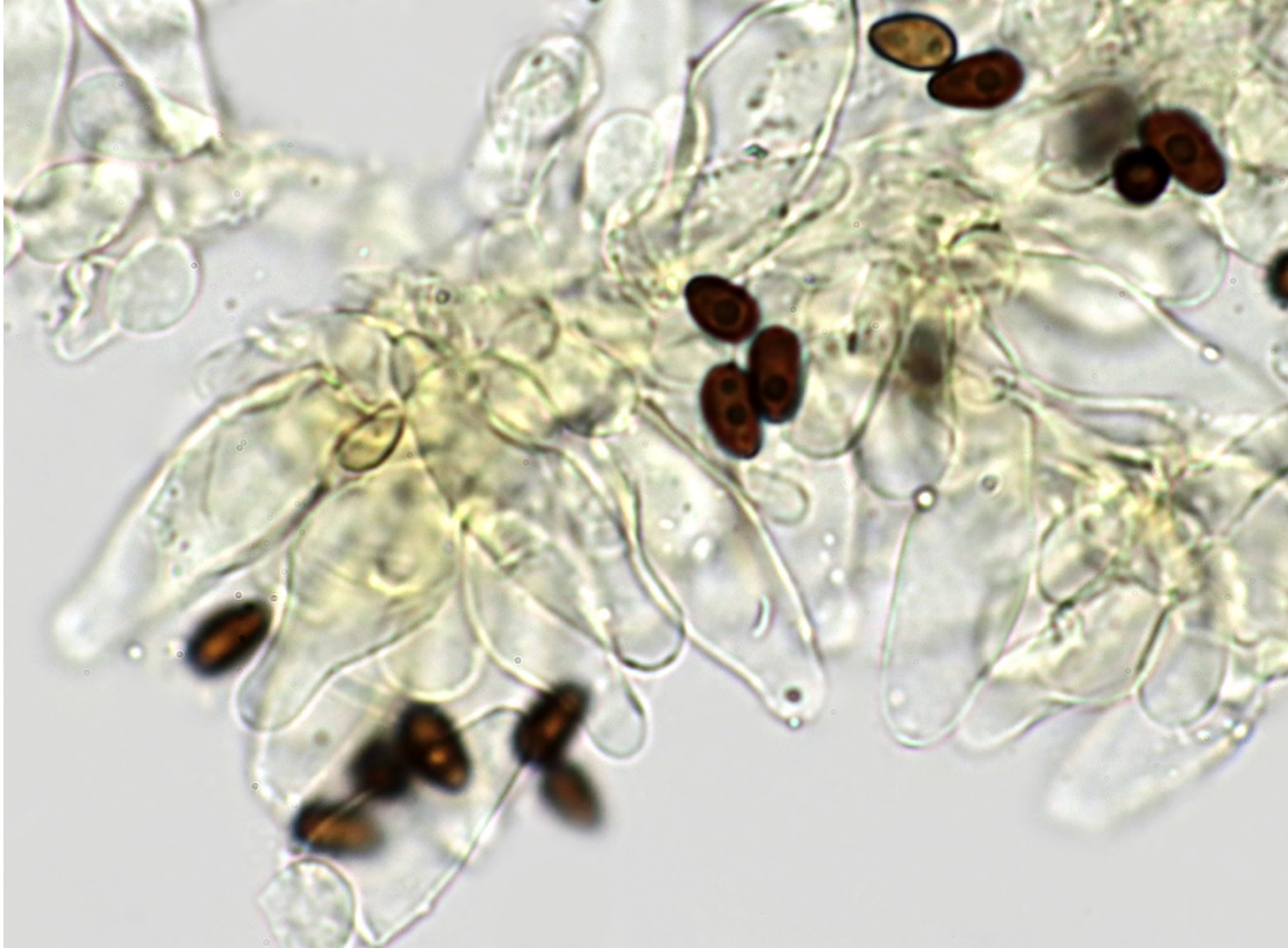
Algunas sp. parecen *pubescens* pero no son iguales a
P. pubescens. Además, esp. son + estrechas!
 La *breviseta* ≠. Extremat. *breviseta* muy fina con *P.*
pubescens var *breviseta* por > tamaño pilos y pie y
 volutas de abstracción y zona de fecado (mucha cantidad
 etc...) → *breviseta* → el filo ←
 Por otra parte la ant. son + atípicas que los descritos
 por K & W (1985) pero verán Arnold (1982: 437)
 y foto de Keizer & Arnold (1985: 104)!!
 Extremat. "petreca" o escape de en *sect. quadric-*
quiescens subsect. *luteus*!

Comparado con AM 22.056 y 14.768

P. pubescens es muy diferente! Tiene esp. ≠ y +
 anchos, anchos > 6µ anchos lo que no ocurre en
 este tax. FOTO MACRO tiene la mucha
 cantidad que aparece en *breviseta* y delante por
 K & W (1985) y Arnold (1982).

Se trata de una nueva de *P. pubescens* var.
breviseta que debería estar en *sect. quadric-*
quiescens subsect. *luteus*!

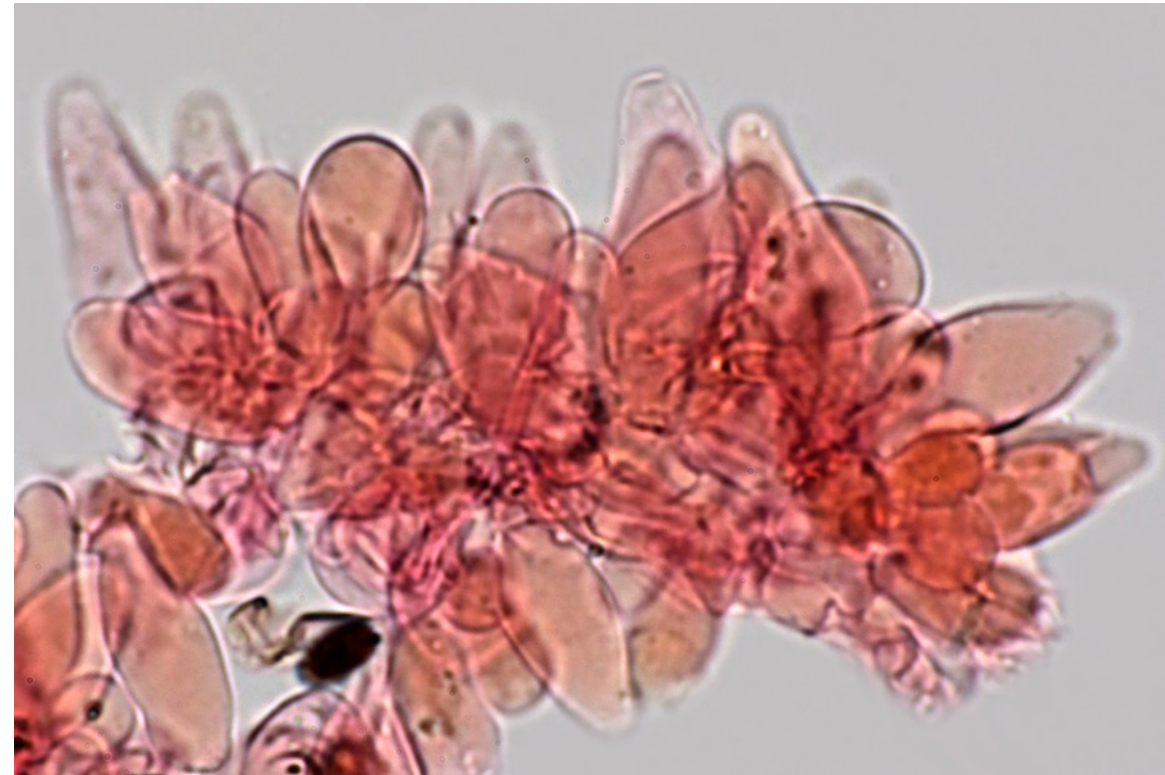
Cheilocystidia numerous, densely packed, hyaline, utriform, lageniform, and clavate, underlined in few places with yellow-brown coloured fibers, mixed with lots of small clavate or globulose paracystidia which are infrequently thickwalled. Measurements done with Piximètre : N = 100 ; (24,2) 28,9 - 36,9 (40,5) × (8,5) 9,9 - 14 (16,6) μm ; **Me = 32,6 × 12 μm.**



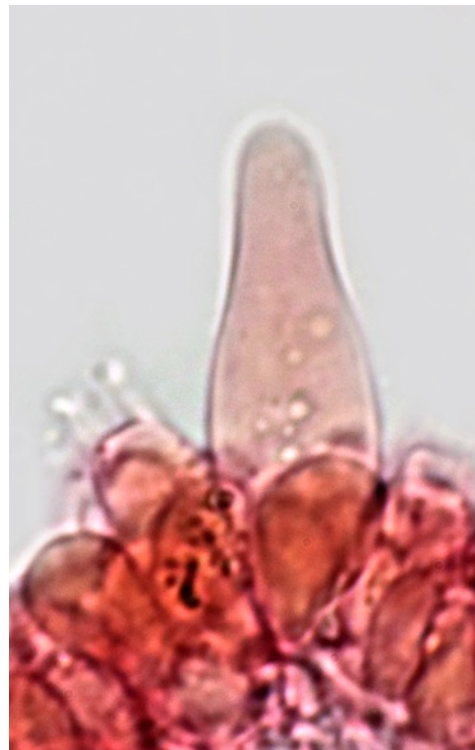


Cheilocystidia mixed with lots of paracystidia especially near the margin of the cap.

Few paracystidia are thickwalled



Pleurocystidia very numerous, hyaline, lageniform and sub-utriform , with obtuse apex
Measuring : N = 38 ; (36,5) 39,1 - 51,2 (54,2) × (9,5) 10,7 - 13,1 (15,6) μm ; **Me = 44,8 × 12,1 μm.**

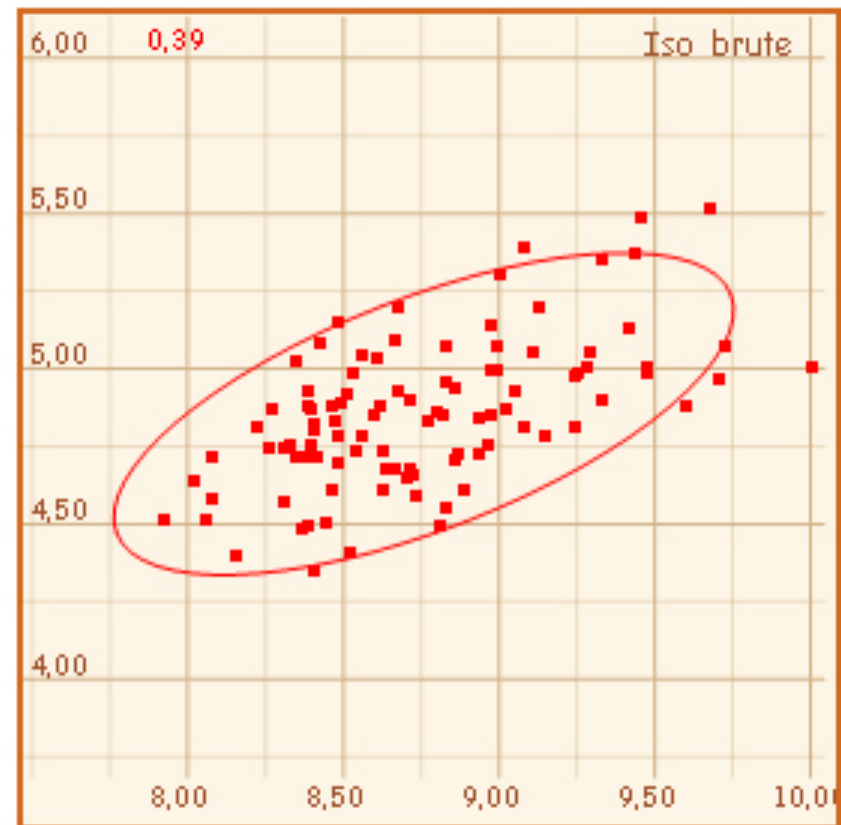




Basidia : 4-spored – Clamps : present
Spores : smooth , brown , not opaque , ellipsoid in face view,
asymetric and flatened on one side in profile, germ pore large,
central.

Measuring with Piximètre : N = 99

(7,9) 8,3 - 9,3 (10) × (4,3) 4,6 - 5,1 (5,5) μm ; **Me = 8,8 × 4,9 μm** ;
Q = (1,6) 1,7 - 1,9 (2) ; Qe = 1,8



Psathyrella senex group B

Psathyrella AH 27060 – leg Gabriel Moreno

Identified by G. Moreno and Michel Heykoop as *Psathyrella senex* (Peck) A. H. Smith

One complete exsiccatum and one third of a cap - Removal of 2 gills from each specimen for microscopic study.

Psathyrella senex (Peck) A.H. Sm.
CIUDAD REAL, Parque Nacional de Cabañeros, Valle del Brezoso,
Arroyo de Brezoso, en humus y restos leñosos de *Quercus pyrenaica*,
18-X-2001, leg. G. Moreno, E. Llarandi & M. Heykoop, **AH 27060**,
secuencias de ITS en GenBank MF966488.

Waiting for photo in situ

Michel Heykoop drawings and notes

Prothyrella (p. mca.) (d. cum.) H. rears. [AH.27.060]

Cheils Trans linear for a pigment
 pointed his small re-pigment
 fs level = ~~as high~~ ^{as high} to P. d. m. n. by
 cheils with cell, densif. y m
 uti p. m.
 Vence = uti
long!

32/105
 32/105
 75/11

Pleno Utripes

42x10
 38/10
~~38/10~~
 43/10
 40/14

B 4 x densif.
 e.p. 10x8
 long
 Ab. d. b.

00

Eyes lens elliptoid on pro per visible p. d. s
 2 mac. p. d. a p. d. o. r. a. s

8	8	8.5	8	7.5	8.5	8	8	8	8	8.5	8.5	9	8.5	9	7.5
4	4	5	4.5	4.5	5	5	5	5	4.5	5	5	5	5	5	4.5

Prothyrella sp. Valle del Brezo, Arroyo de Brezo.
 loc 3 Cobancos, Parque Nacional de la Sierra de Guadalupe
 18-X-2001
 en bosque Quercus pyrenaica arboreo, (1 q. p. la p. m. d. i. en) roble
 G. d. r. e. s., E. l. e. r. a. d. i. N. H. e. y. k. o. o. p.

Piles convex a oplanid convex p. m. d. i. 0.3 - 0.3
 at, adults 1-3 a ϕ , hifas striado, p. d. m. y o. r. a. s, a
 p. d. s. e. n. c. a. p. e. d. o. a. d. e. s, v. e. l. o. s. a. p. a. r. e. n. t. e. = a. u. r. e. t. e. (p. e. r. t. e. l. u. r. i. d.)
la p. r. i. m. e. r. a. a. p. r. i. m. e. r. a. p. o. d. u. c. t. a. s, a. n. t. e. l. a. c. e. (?)

Pie 25-6 x 0.25-0.4, alidic, paq., la p. m. d. i. a
 v. l. a. q. u. i. a. a. u. e.

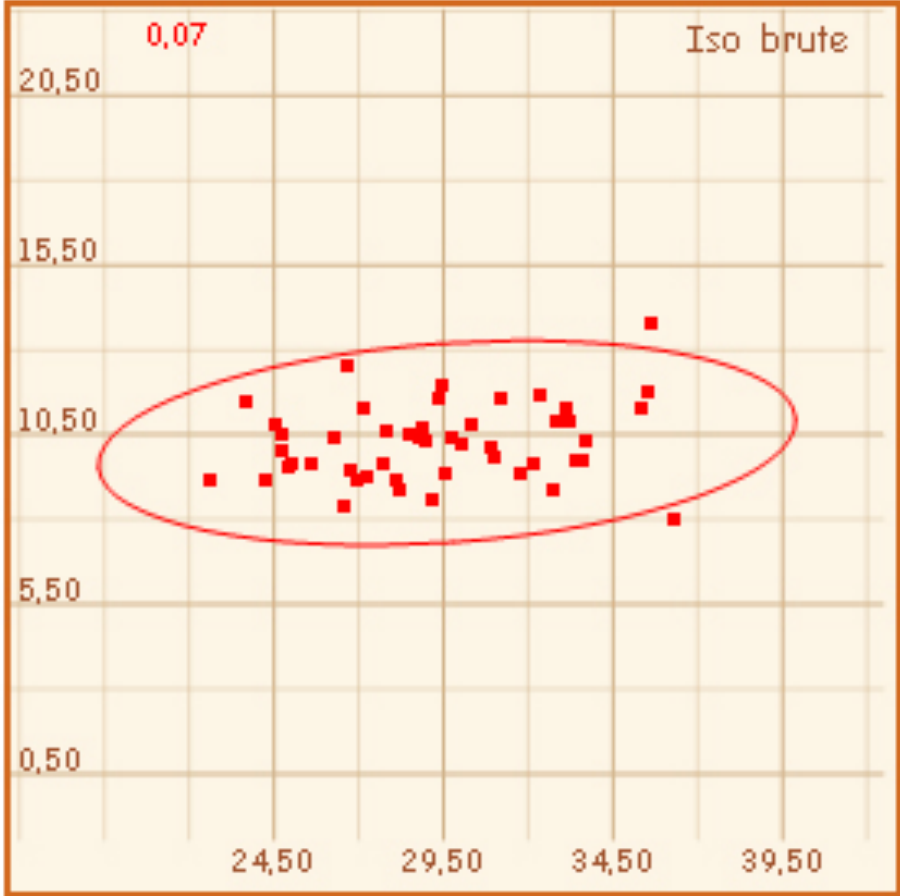
Obs tipico
prepar.
 (fotos macro)

seca 10 centos p. l. a. o. a. d. e. s
 hifas h. m. d. s. ??

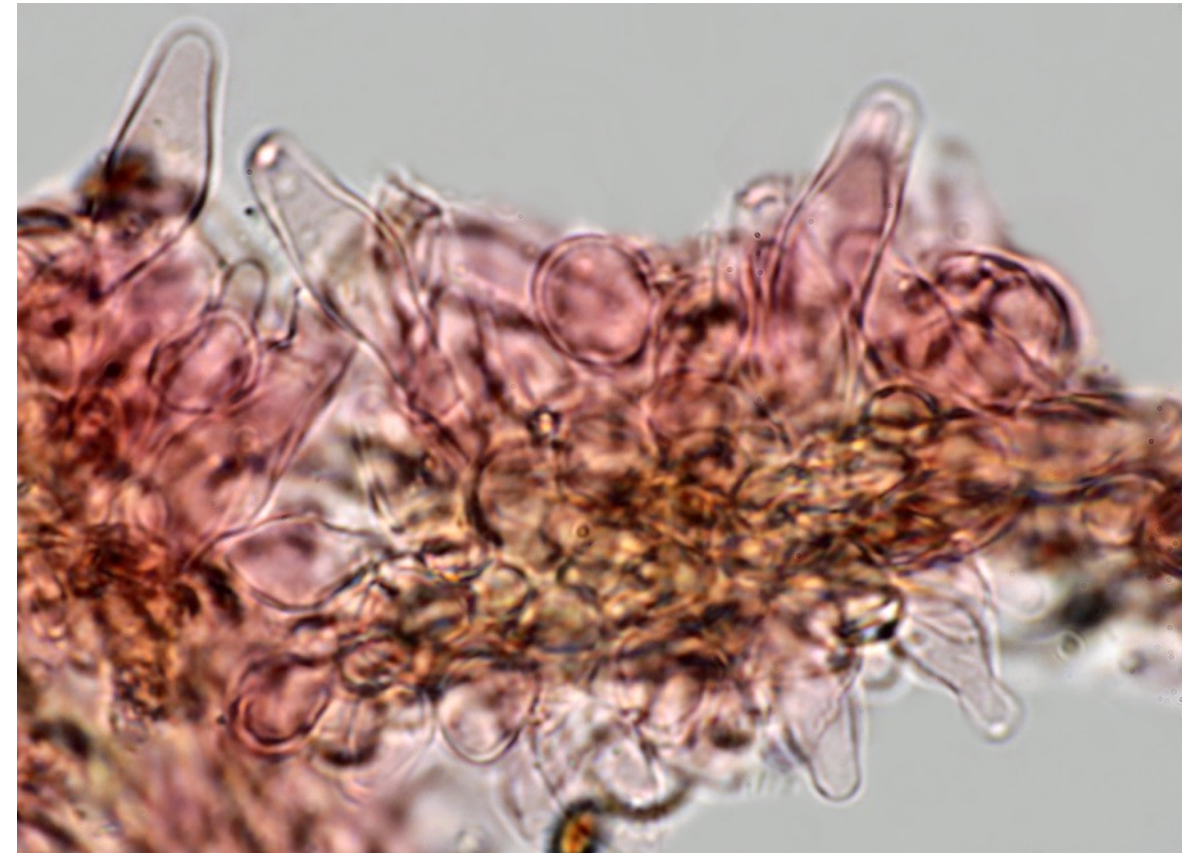
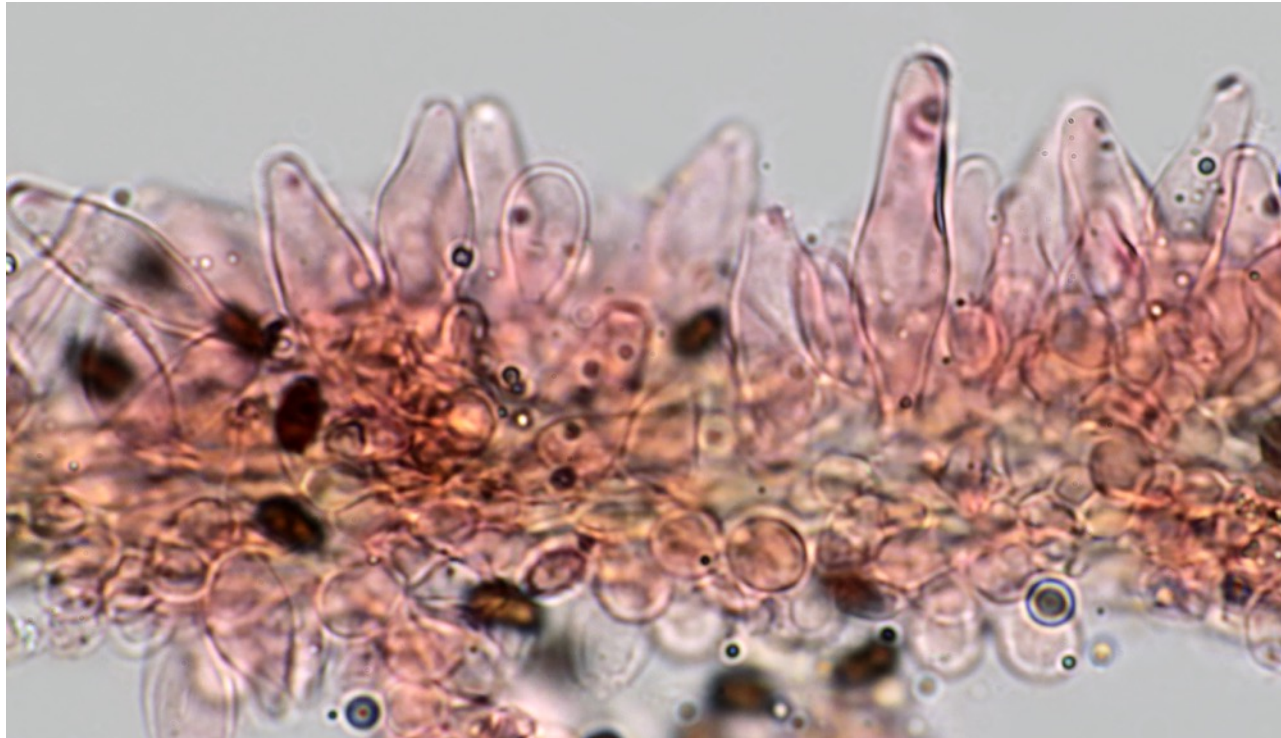
frim -> cf. P. mca

[AH.27.060]

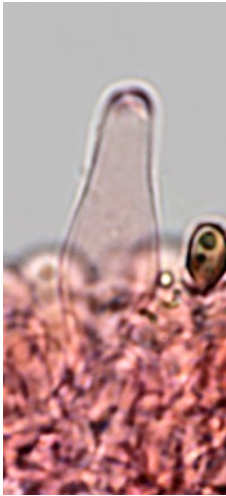
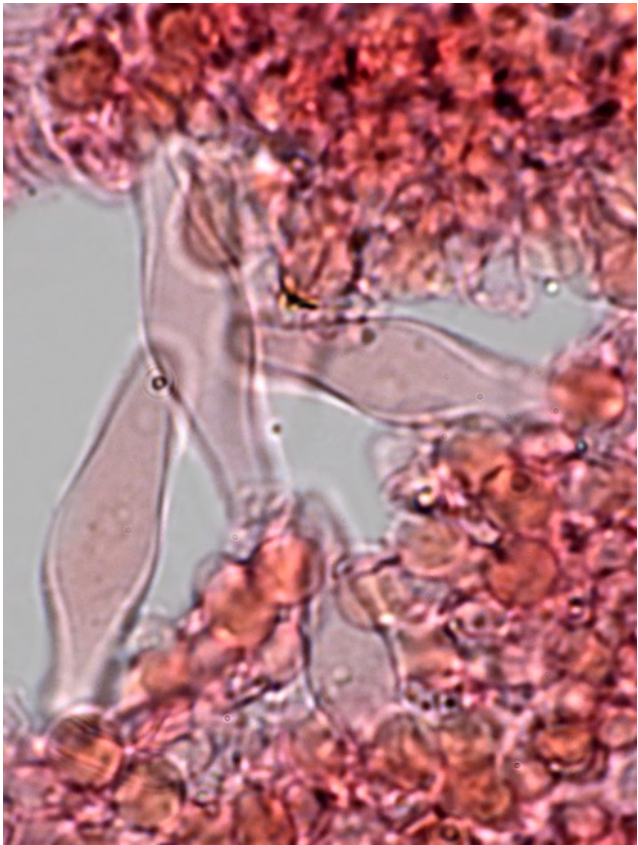
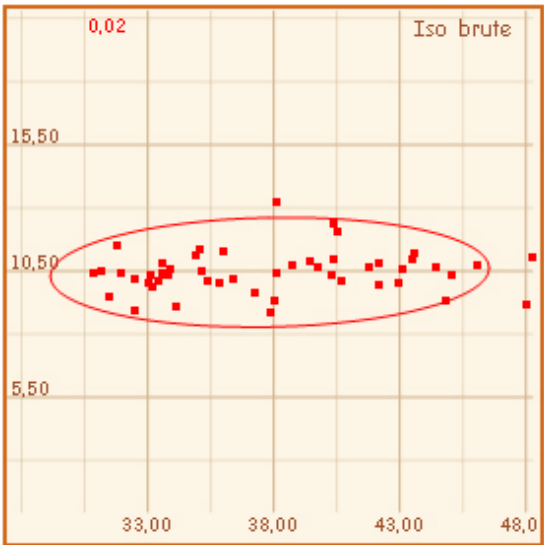
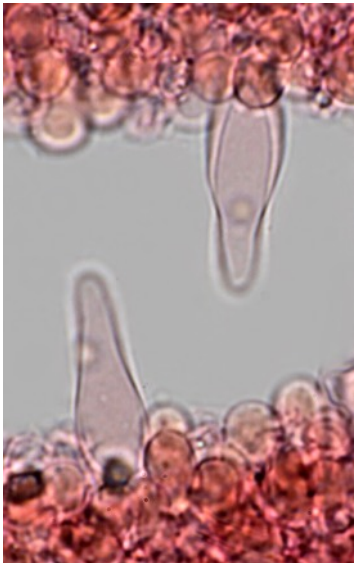
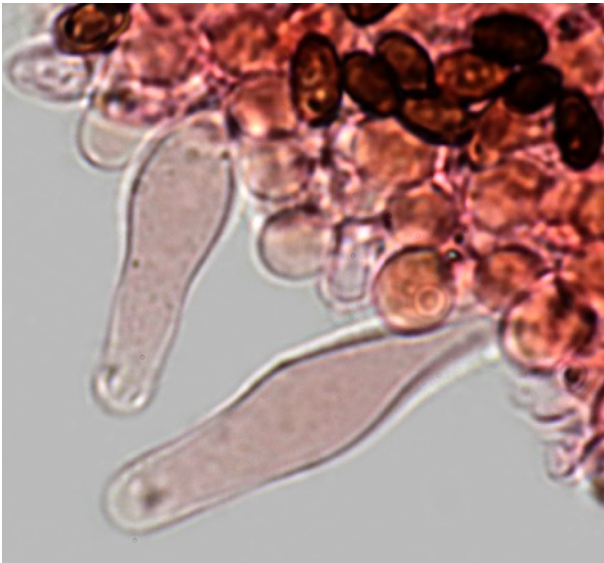
Cheilocystidia numerous, densely packed, hyaline, utriform and lageniform, underlined by yellow-brown coloured fibers mixed with lots of small clavate or globulose paracystidia which are thick-walled and yellow-brown coloured in one of the two specimens.
Measuring done with Piximètre : N = 49 ; (22,6) 24,8 - 33,7 (43,2) × (8) 9,1 - 11,6 (13,8) μm ; Me = 29,6 × 10,3 μm.

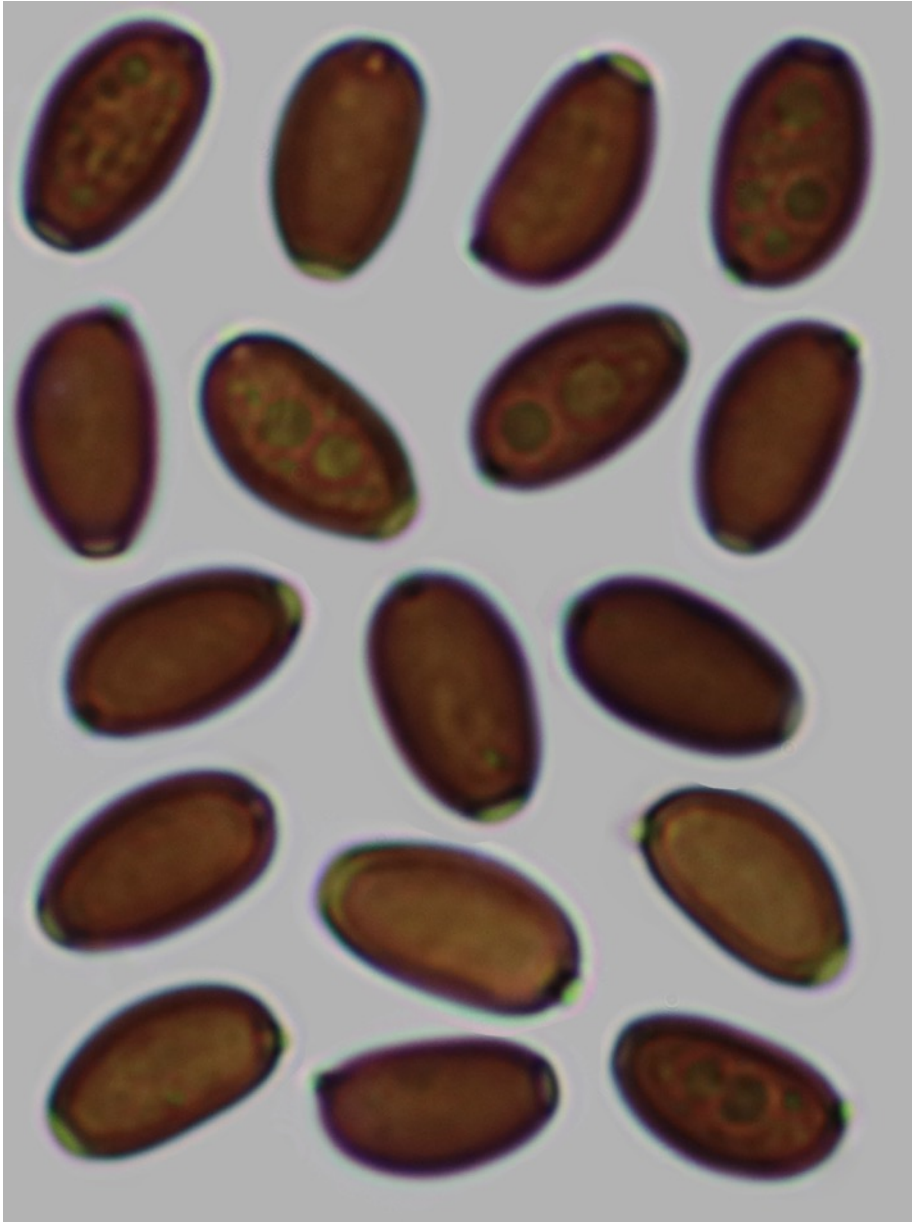


Cheilocystidia and paracystidia which are thickwalled and yellow brown coloured in one of the two specimen.



Pleurocystidia very numerous, hyaline, lageniform and sub-utriform, with obtuse apex.
Measuring : N = 50 ; (30,9) 32,5 - 44,5 (48,3) × (8,9) 9,3 - 11,2 (13,2) μm ; Me = 37,8 × 10,4 μm.





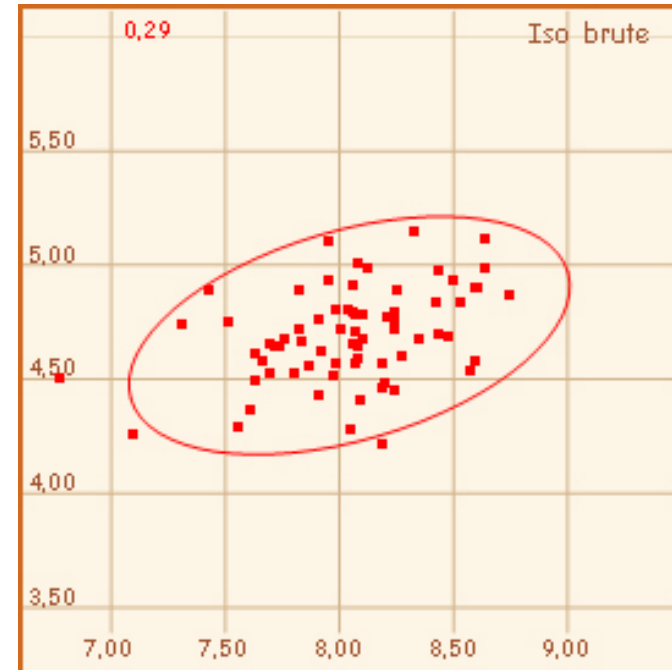
Basidia : 4-spored

Spores : smooth , brown , not opaque , ellipsoid in face view, assymetric and flattened on one side in profile, germ pore large, central.

Measuring with Piximètre : N = 70

(6,8) 7,6 - 8,5 (8,7) × (4,2) 4,5 - 4,9 (5,1) μm ; Me = 8 × 4,7 μm ;

Q = (1,5) 1,6 - 1,8 (1,9) ; Qe = 1,7



Sequencing and phylogenetic analysis

DNA extraction, amplification and sequencing of the fungus was performed by Alvalab (Oviedo, Spain). The phylogenetic analysis was done by Dieter Wächter (Thiersheim, Germany). The genomic DNA was extracted from dried fruiting bodies. Amplification of the ITS region was performed with the ITS4 primer [1]. The initial base calling was done with FinchTV [2]. The nucleotide sequences were checked manually for errors, as well as the base calling at unsafe regions (trails, low confidence scores, stutters and polymorphs) on the basis of existing sequences of the */noli-tangere* by divergence matrix and corrected if necessary. In the present case only a trimming of the trails was necessary. The following molecular phylogenetic markers were used for the phylogenetic analysis: ITS1 (Internal Transcribed Spacer 1), 5.8S (5.8S rRNA Gene), ITS2 (Internal Transcribed Spacer 2), LSU (Large Subunit 28S rRNA Gen), β -tub (exons of the β -tubulin gene), ef-1 α (exons of the ef-1 α gene). The nucleotide sequences for the tree inference were taken from NCBI [3] and Unite [4] (essential ones of the */noli-tangere*-clade s.l. see Table 1). Region boundaries for the ITS- and LSU-region were carried out with ITSx [5] and HMMER [6] including the databases. As outgroup, the sequence sets of the most closely related clade of the ingroup were used, i.e. the the *Cystopsathyra* section clade and the */piluliformis* s.l. clade. Due to the rapidly evolving, indel-rich areas of the ITS region, it can only be aligned veridical by using an iterative multigene-guide tree. The initial alignment of the ITS region was performed with Mafft [7] using the FFT-NS-2 method. The initial alignments of the LSU-, β -tub and ef-1 α genes was carried out using E-INS-i method. The indel matrices for the ITS and LSU regions were each coded with SeqState [8] using the SIC = "Simple Indel coding" [9] method. After each alignment step, an ML analysis with RAxML [10] (model: GTRCAT, refining under GTR+G for DNA, GTR2+G with acquisition bias correction according to Lewis [11] for indel partitions) was carried out and the resulting best tree was used as a guide tree for the refinement of the ITS1 and ITS2 MSA. The iterative alignments were done with Prank [12], whereby the switches -once and -uselogs were set. Tracing values were recorded, evaluated statistically and thus the end of the iteration loop of the alignment was determined. The partitioning of all alignments and the indel matrices as well as the model selection for the DNA alignments was done with Partitionfinder [13]. For the final partitioning, the guide tree of the last iteration step was used. As information criterion the Bayesian Information Criterion (BIC) [14] used was after comparison with the Corrected Akaike Information Criterion (AICc) [15] and evaluation with respect to over- or under-partitioning. The partitioning scheme of the final phylogeny was:

- DNA-partition 1: ITS1 + ITS2
- DNA-partition 2: 5.8S
- DNA-partition 3: LSU + β -tub-Codon 1
- DNA-partition 4: β -tub Codon 2 + ef-1 α Codon 2
- DNA-partition 5: β -tub Codon 3 + ef-1 α Codon 3
- DNA-partition 6: ef-1 α Codon 1
- Binary partition (gap matrices): ITS1 + ITS2 + LSU

The final maximum likelihood analysis was done with RAxML 8.2.10 [10]. For all DNA partitions, the GTR substitution matrix [16] under the CAT model [10] was used. The final optimization took place under gamma distribution [10]. For the binary partitions, the "Two State Time-Reversible Model" with acquisition bias correction [11] was used. 1000 ML bootstrap inferences were calculated. Of these, 1000 trees were sampled and the best tree was labeled with the ML bootstrap support values and collapsed to the ML bootstrap value of 50%. The phylogram in Fig 1 was edited with Treegraph [17]. The Outgroup has been collapsed for a better view.

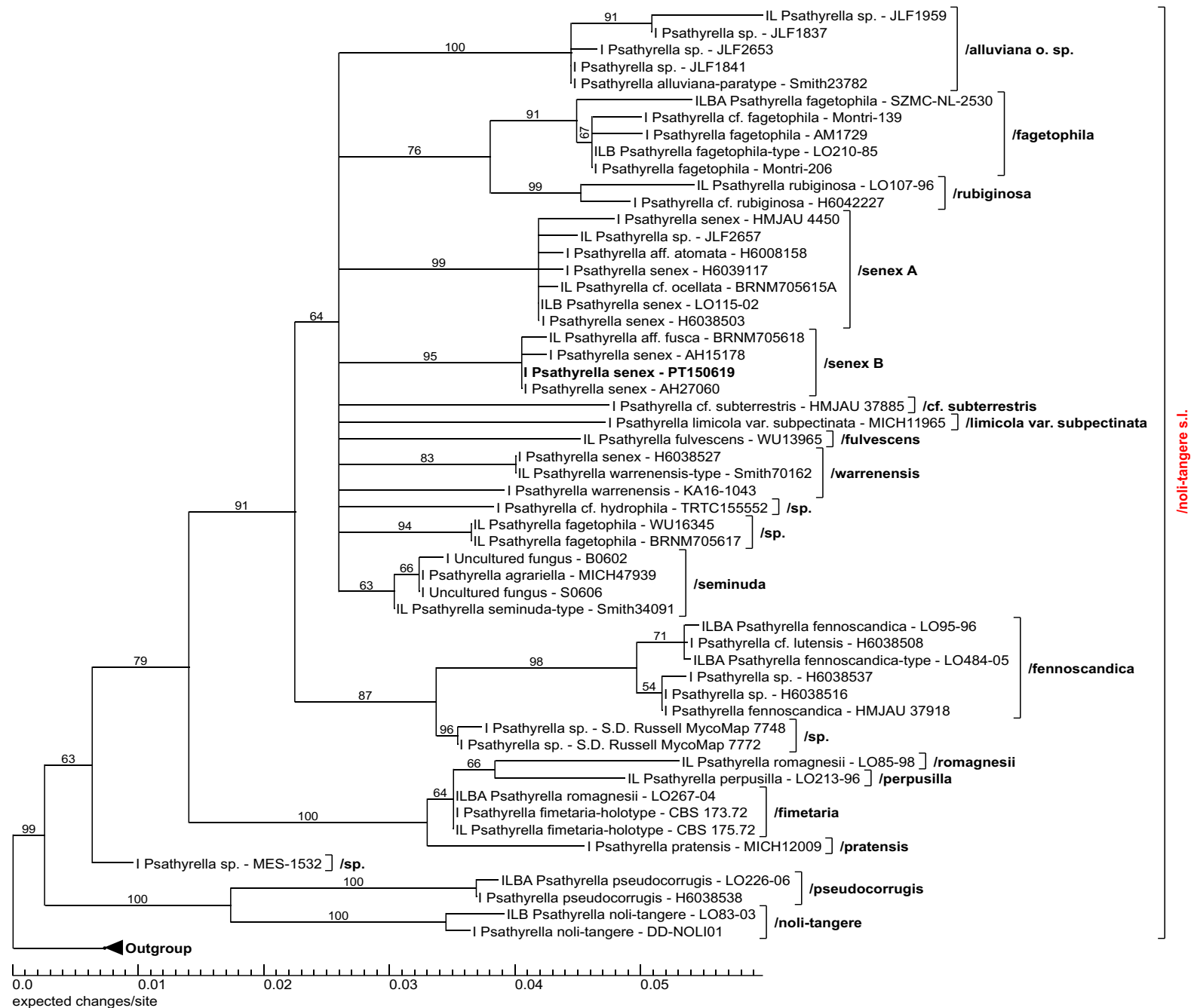


Fig 1 50% collapsed maximum likelihood consensus phylogram. The values on the branches are ML bootstrap values. Abbreviations: I: ITS region, L: LSU region, B: β -tubulin region, A: ef-1 α region.

Table 1 List of relevant sequences used in this publication

Species	Ref.-ID	ITS	LSU	β-Tub	ef-1α
<i>Psathyrella</i> sp.	JLF1841	MN017246.1			
<i>Psathyrella</i> sp.	JLF2653	MN017258.1			
<i>Psathyrella</i> sp.	JLF1837	MN017245.1			
<i>Psathyrella</i> sp.	JLF1959	MN017249.1	MN031140.1		
<i>Psathyrella alluviana</i> o. sp.	Smith23782	follows			
<i>Psathyrella fagetophila</i>	AM1729	MK045662.1			
<i>Psathyrella fagetophila</i>	LO210-85		KC992902.1	KJ664879.1	
<i>Psathyrella fagetophila</i>	SZMC-NL-2530	FM878003.1	FM876259.1	FN396322.1	FM897222.1
<i>Psathyrella fagetophila</i>	Montri-206	MK028505.1			
<i>Psathyrella</i> cf. <i>fagetophila</i>	Montri-139	MK028506.1			
<i>Psathyrella</i> cf. <i>rubiginosa</i>	H6042227	UDB021234			
<i>Psathyrella rubiginosa</i>	LO107-96	KC992905.1	KC992905.1		
<i>Psathyrella</i> aff. <i>atomata</i>	H6008158	UDB021144			
<i>Psathyrella senex</i>	HMJAU 4450	MG734732.1			
<i>Psathyrella senex</i>	LO115-02	DQ389712.1	DQ389712.1	KJ664880.1	
<i>Psathyrella senex</i>	H6039117	UDB021231			
<i>Psathyrella</i> cf. <i>ocellata</i>	BRNM705615A	AM712266.1	AM712266.1		
<i>Psathyrella senex</i>	H6038503	UDB021183			
<i>Psathyrella</i> sp.	JLF2657	MN017259.1	MN031153.1		
<i>Psathyrella senex</i>	AH15178	MF966484.1			
<i>Psathyrella senex</i>	AH27060	MF966488.1			
<i>Psathyrella senex</i>	PT150619	follows			
<i>Psathyrella</i> aff. <i>fusca</i>	BRNM705618	AM712264.1	AM712264.1		
<i>Psathyrella</i> cf. <i>subterrestris</i>	HMJAU 37885	MG734747.1			
<i>Psathyrella limicola</i> var. <i>subpectinata</i>	MICH11965	MF325980.1			
<i>Psathyrella fulvescens</i>	WU13965	AM712265.1	AM712265.1		
<i>Psathyrella senex</i>	H6038527	UDB021206			
<i>Psathyrella warrenensis</i>	Smith70162	KC992906.1	KC992906.1		
<i>Psathyrella warrenensis</i>	KA16-1043	MK351682.1			
<i>Psathyrella</i> cf. <i>hydrophila</i>	TRTC155552	JN021089.1			
<i>Psathyrella fagetophila</i>	WU16345	AM712262.1	AM712262.1		
<i>Psathyrella fagetophila</i>	BRNM705617	AM712263.1	AM712263.1		
Uncultured fungus	S0606	FM999571.1			
Uncultured fungus	B0602	FM999574.1			
<i>Psathyrella seminuda</i>	Smith34091	KC992907.1	KC992907.1		
<i>Psathyrella agrariella</i>	MICH47939	MF325950.1			
<i>Psathyrella</i> sp.	H6038537	UDB021215			
<i>Psathyrella fennoscandica</i>	HMJAU 37918	MG734723.1			
<i>Psathyrella</i> sp.	H6038516	UDB021196			
<i>Psathyrella</i> cf. <i>lutensis</i>	H6038508	UDB021188			
<i>Psathyrella fennoscandica</i>	LO484-05	KC992903.1	KC992903.1	KJ664881.1	KJ732790.1
<i>Psathyrella fennoscandica</i>	LO95-96	KC992904.1	KC992904.1	KJ664882.1	KJ732791.1
<i>Psathyrella</i> sp.	S.D. Russell MycoMap 7748	MK532816.1			
<i>Psathyrella</i> sp.	S.D. Russell MycoMap 7772	MK532817.1			
<i>Psathyrella romagnesii</i>	LO85-98	DQ389716.1	DQ389716.1		
<i>Psathyrella perpusilla</i>	LO213-96	DQ389714.1	DQ389714.1		
<i>Psathyrella romagnesii</i>	LO267-04	DQ389715.1	DQ389715.1	KJ664889.1	KJ732802.1
<i>Psathyrella fimetaria</i>	CBS 175.72	MH860432.1	MH872162.1		
<i>Psathyrella fimetaria</i>	CBS 173.72	MH860430.1			
<i>Psathyrella pratensis</i>	MICH12009	MF325994.1			
<i>Psathyrella</i> sp.	MES-1532	KY462474.1			
<i>Psathyrella pseudocorrugis</i>	LO226-06	KC992917.1	KC992917.1	KJ664888.1	KJ732801.1
<i>Psathyrella pseudocorrugis</i>	H6038538	UDB021216			
<i>Psathyrella noli-tangere</i>	LO83-03	DQ389713.1	DQ389713.1	KJ664890.1	
<i>Psathyrella noli-tangere</i>	DD-NOLI01	follows			

References

- White TJ, Bruns T, Lee L, Taylor JW (1990) Amplification and direct sequencing of fungal ribosomal RNA genes for phylogenetics. In: InnisMA, GelfandDH, Sininski JJ,White TJ (eds) PCR protocols, a guide to methods and applications. Academic Press, New York, pp 315–322
- FinchTV 1.4.0:** Geospiza, Inc.; Seattle, WA, USA; <http://www.geospiza.com>
- NCBI:** National Center for Biotechnology Information, U.S. National Library of Medicine 8600 Rockville Pike, Bethesda MD, 20894 USA - <https://www.ncbi.nlm.nih.gov/>
- Unité:** Kōljalg U, Nilsson RH, Abarenkov K, Tedersoo L, Taylor AFS, Bahram M, Bates ST, Bruns TD, Bengtsson-Palme J, Callaghan TM, Douglas B, Drenkhan T, Eberhardt U, Dueñas M, Grebenc T, Griffith GW, Hartmann M, Kirk PM, Kohout P, Larsson E, Lindahl BD, Lücking R, Martín MP, Matheny PB, Nguyen NH, Niskanen T, Oja J, Peay KG, Peintner U, Peterson M, Põldmaa K, Saag L, Saar I, Schüßler A, Scott JA, Senés C, Smith ME, Suija A, Taylor DL, Telleria MT, Weiß M, Larsson K-H. 2013. Towards a unified paradigm for sequence-based identification of Fungi. *Molecular Ecology*, DOI: 10.1111/mec.12481
- ITSx 1.1b:** Johan Bengtsson-Palme 2012-2017; Improved software detection and extraction of ITS1 and ITS2 from ribosomal ITS sequences of fungi and other eukaryotes for use in environmental sequencing. Johan Bengtsson-Palme, Vilmar Veldre, Martin Ryberg, Martin Hartmann, Sara Branco, Zheng Wang, Anna Godhe, Yann Bertrand, Pierre De Wit, Marisol Sanchez, Ingo Ebersberger, Kemal Sanli, Filipe de Souza, Erik Kristiansson, Kessy Abarenkov, K. Martin Eriksson, R. Henrik Nilsson: *Methods in Ecology and Evolution*, 4: 914-919, 2013 - (DOI: 10.1111/2041-210X.12073)
- HMMER 3.1b2** (February 2015): <http://hmmer.org/> - Copyright (C) 2015 Howard Hughes Medical Institute. Freely distributed under the GNU General Public License (GPLv3)
- Mafft 7.372** (used over mafft.cbrc.jp)
- Nakamura, Yamada, Tomii, Katoh 2018 (*Bioinformatics* 34:2490–2492) - Parallelization of MAFFT for large-scale multiple sequence alignments.
- Katoh, Rozewicki, Yamada 2017 (Briefings in Bioinformatics, in press) - MAFFT online service: multiple sequence alignment, interactive sequence choice and visualization.
- Yamada, Tomii, Katoh 2016 (*Bioinformatics* 32:3246-3251) additional information - Application of the MAFFT sequence alignment program to large data-reexamination of the usefulness of chained guide trees.
- Katoh, Standley 2016 (*Bioinformatics* 32:1933-1942) - A simple method to control over-alignment in the MAFFT multiple sequence alignment program.
- Katoh, Standley 2013 (*Molecular Biology and Evolution* 30:772-780) - MAFFT multiple sequence alignment software version 7: improvements in performance and usability.
- Kuraku, Zmasek, Nishimura, Katoh 2013 (*Nucleic Acids Research* 41:W22-W28) - aLeaves facilitates on-demand exploration of metazoan gene family trees on MAFFT sequence alignment server with enhanced interactivity.
- Katoh, Frith 2012 (*Bioinformatics* 28:3144-3146) - Adding unaligned sequences into an existing alignment using MAFFT and LAST.
- Katoh, Toh 2010 (*Bioinformatics* 26:1899-1900) - Parallelization of the MAFFT multiple sequence alignment program.
- Katoh, Asimenos, Toh 2009 (*Methods in Molecular Biology* 537:39-64) - Multiple Alignment of DNA Sequences with MAFFT. In *Bioinformatics for DNA Sequence Analysis* edited by D. Posada
- Katoh, Toh 2008 (*BMC Bioinformatics* 9:212) - Improved accuracy of multiple ncRNA alignment by incorporating structural information into a MAFFT-based framework.
- Katoh, Toh 2008 (Briefings in Bioinformatics 9:286-298) - Recent developments in the MAFFT multiple sequence alignment program.
- Katoh, Toh 2007 (*Bioinformatics* 23:372-374) Errata - PartTree: an algorithm to build an approximate tree from a large number of unaligned sequences.
- Katoh, Kuma, Toh, Miyata 2005 (*Nucleic Acids Res.* 33:511-518) - MAFFT version 5: improvement in accuracy of multiple sequence alignment.
- Katoh, Misawa, Kuma, Miyata 2002 (*Nucleic Acids Res.* 30:3059-3066) - MAFFT: a novel method for rapid multiple sequence alignment based on fast Fourier transform.
- SeqState 1.4.1:** Müller, K (2005), SeqState - primer design and sequence statistics for phylogenetic DNA data sets. *Applied Bioinformatics*, 4, 65-69
- SIC (Simple Indel Coding):** Simmons MP and Ochoterena H (2000): Gaps as characters in sequence-based phylogenetic analyses. *Syst Biol* 49: 369–381
- RAXML Version 8.2.10:** A. Stamatakis: "RAXML Version 8: A tool for Phylogenetic Analysis and Post-Analysis of Large Phylogenies". In *Bioinformatics*, 2014, open access link: <http://bioinformatics.oxfordjournals.org/content/early/2014/01/21/bioinformatics.btu033.abstract?keytype=ref&ijkey=VTEqgUJYCdcf0kP>
- Two Parameter Model & Acquisition Bias Correction:** Paul O. Lewis: A Likelihood Approach to Estimating Phylogeny from Discrete Morphological Character Data - *Systematic Biology*, Volume 50, Issue 6, 1 November 2001, Pages 913–925
- Prank 140603:**
- Löytynoja A, Goldman N: An algorithm for progressive multiple alignment of sequences with insertions. *Proc Natl Acad Sci USA* 2005, 102: 10557–10562. 10.1073/pnas.0409137102
- Löytynoja A, Goldman N: A model of evolution and structure for multiple sequence alignment. *Philos Trans R Soc Lond B Biol Sci* 2008, 363: 3913–3919. 10.1098/rstb.2008.0170
- Phylogeny-aware alignment with PRANK (Ari Löytynoja), [Methods Mol Biol.](http://dx.doi.org/10.1093/molbev/msw260) 2014;1079:155-70
- Prank -F Option:** Löytynoja A, Goldman N: Phylogeny-aware gap placement prevents errors in sequence alignment and evolutionary analysis. *Science* 2008, 320: 1632–1635. 10.1126/science.1158395
- Partitionfinder 2.1.1:**
- Lanfear, R., Frandsen, P. B., Wright, A. M., Senfeld, T., Calcott, B. (2016) PartitionFinder 2: new methods for selecting partitioned models of evolution formolecular and morphological phylogenetic analyses. *Molecular biology and evolution*. DOI: [dx.doi.org/10.1093/molbev/msw260](https://doi.org/10.1093/molbev/msw260)
- greedy algorithm used with Partitionfinder: Lanfear, R., Calcott, B., Ho, S. Y., & Guindon, S. (2012). PartitionFinder: combined selection of partitioning schemes and substitution models for phylogenetic analyses. *Molecular biology and evolution*, 29(6), 1695-1701
- Bayesian Information Criterion (BIC):** Schwarz, G. (1978). Estimating the dimension of a model. *The Annals of Statistics*, 6, 461–464
- Corrected Akaike Information criterion (AICc):**
- Akaike, H. (1974). A new look at the statistical model identification. *IEEE Transactions on Automatic Control*, 19, 716–723
- Hurvich, C. and Tsai, C. (1989). Regression and time series model selection in small samples. *Biometrika*, 76, 297–307
- Sugiura, N. (1978). Further analysis of the data by akaike's information criterion and the finite corrections. *Communications in StatisticsTheory and Methods*, A7,13–26
- Mark J. Brewer, Adam Butler, Susan L. Cooksley 2016- The relative performance of AIC, AICC and BIC in the presence of unobserved heterogeneity
- Brown, J.M., Lemmon, A.R. 2007 - The importance of data partitioning and the utility of Bayes factors in Bayesian phylogenetics. *Syst. Biol.* 56, 643–655
- GTR-Model:** Tavaré S. Some probabilistic and statistical problems in the analysis of DNA sequences, *Lectures on mathematics in the life sciences*, vol. Volume 17 Providence (RI) American Mathematical Society
- Treegraph 2.14.0-771 beta:** Stöver B C, Müller K F: TreeGraph 2: Combining and visualizing evidence from different phylogenetic analyses. *BMC Bioinformatics* 2010, 11:7 - DOI: 10.1186/1471-2105-11-7

Remerciements : Patrice Tanchaud, Leandro Sanchez, Gabriel Moreno, Michel Heykoop, Leandro sanchez

Littérature :

Arnolds E., 2003 – *Rare and interesting species of Psathyrella*. Fungi non delineati XXVI : (as *Psathyrella twickelensis* p.53), (as *P. ocellata* p.69),

Breitenbach & Kränzlin , 1995 – Champignons de Suisse Tome 4 p. 268 (as *P. aff. friesii*),

Enderle M., 1992 - Studien in der Gattung *Psathyrella* II p. 91. (as *P. fulvescens* var. *brevicystis*),

Kits van Waveren, 1985 – The Dutch, French and British species of *Psathyrella*. p. 218 (as *P. fusca*), p.250. (as *P. friesii*), p.260 (as *P. fulvescens* var. *brevicystis*), p. 268f. (as *P. ocellata*),

Kits van Waveren, 1987 - p. 342. (as *P. capitatocystis*), p. 344. (as *P. twickelensis*), p. 348f. (as *P. badia*), p.358f(as *P. ploddensis*),

Ludwig, (2007 – Pilzkompodium Band 2. 98.63 (as *P. ocellata*)

Melzer, 2008a – p. 90 (as *P. ploddensis*),

Ørstadius & Knudsen, 2008 *Funga Nordica* p. 616

Smith, 1972 - *The North American species of Psathyrella*. p.163 (as *P. fallax*), p.230 & 368 (as *P. distans*), p. 392 (as *P. communis*), p. 409 (as *P. pseudotrepida*), p. 414 (as *P. fuscospora*),

Author : Daniel Deschuyteneer

danieldeschuyteneer@gmail.com

Une version davantage illustrée sera disponible sur notre site :

A more illustrated version will be available on our website:

<http://www.amfb.eu/Myco/Psathyrelles/psathyrella.html>