

***Psathyrella rubiginosa* A. H. Sm. 1972**

in Mem. New York Bot. Gard. 24: 406

Deschuyteneer Daniel, Enrique Rubio & Juan Antonio Sanchez



Photo in situ Juan Antonio Sanchez

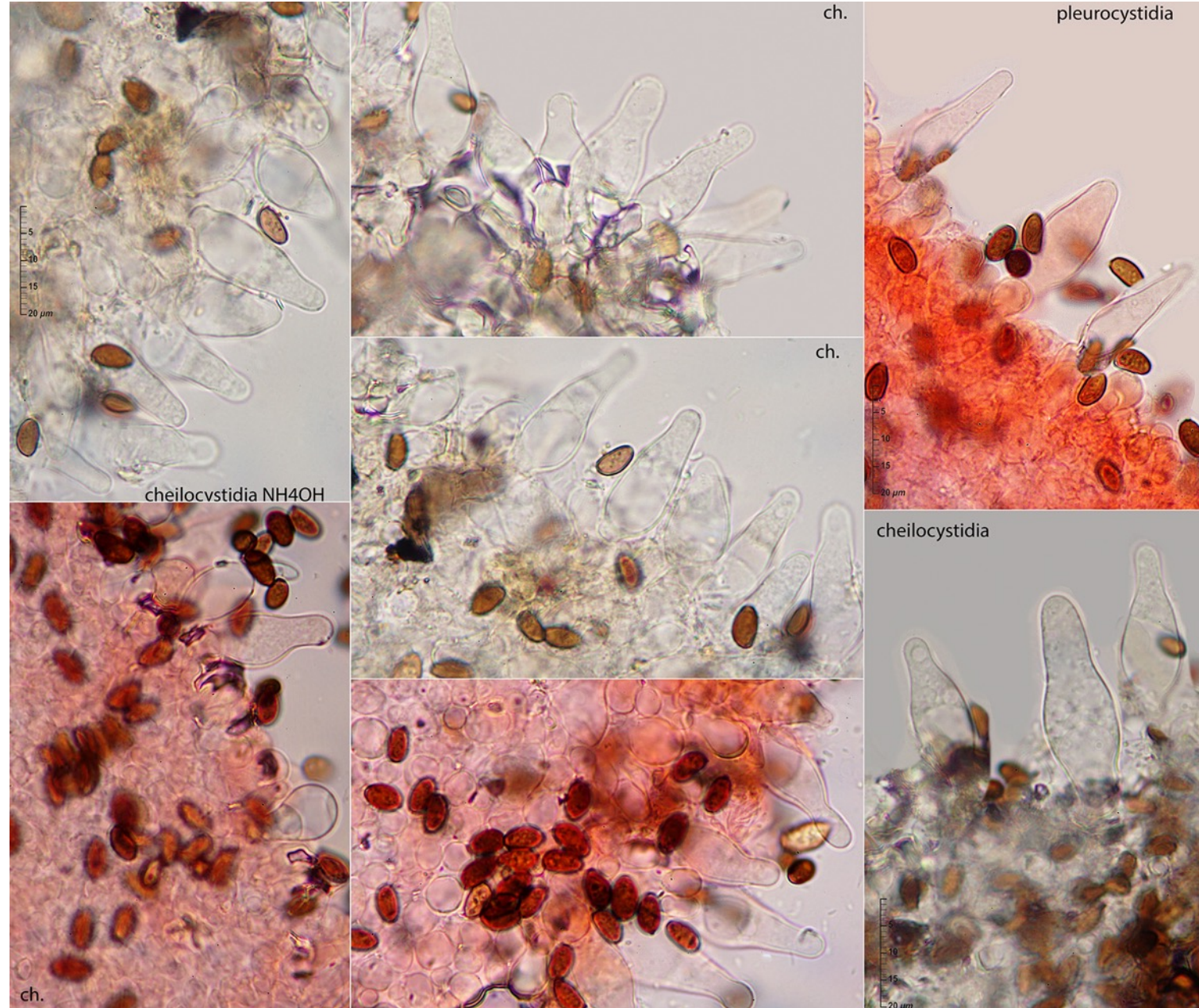
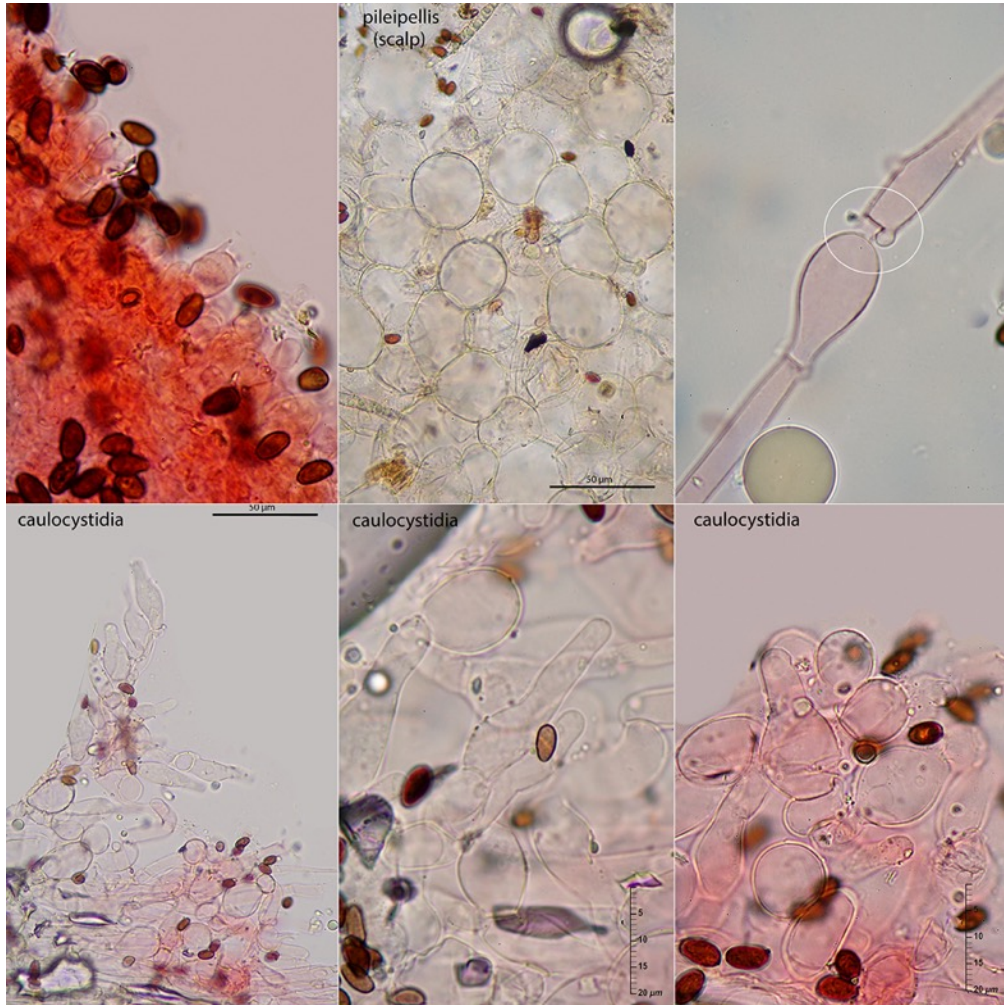
Fontecha (Provincia León - Spain), 14-XI-2020, with remains of *Schoenoplectus lacustris*

This *Psathyrella* of medium or small size, with a quickly volatile whitish fibrillous veil, is growing on sandy soil in a moist lagoon in the middle of a Mediterranean forest with *Quercus ilex* and *Cistaceae*.

Cap diameter 15-22 mm.

The specimens are growing on remains of *Scirpus lacustris* et *Phragmites* and other lake plants.

Microscopy Enrique Rubio

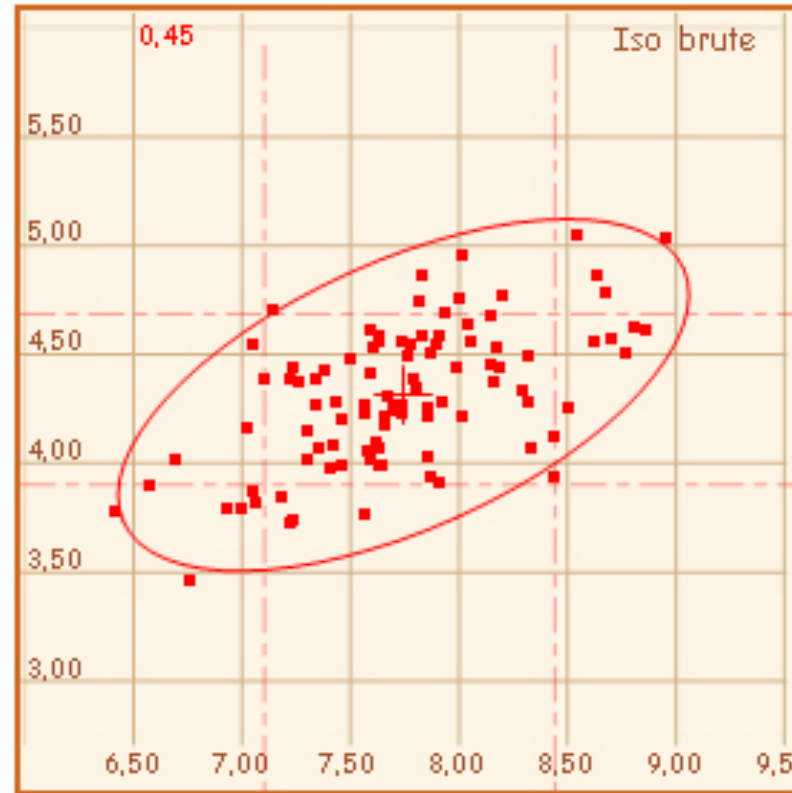
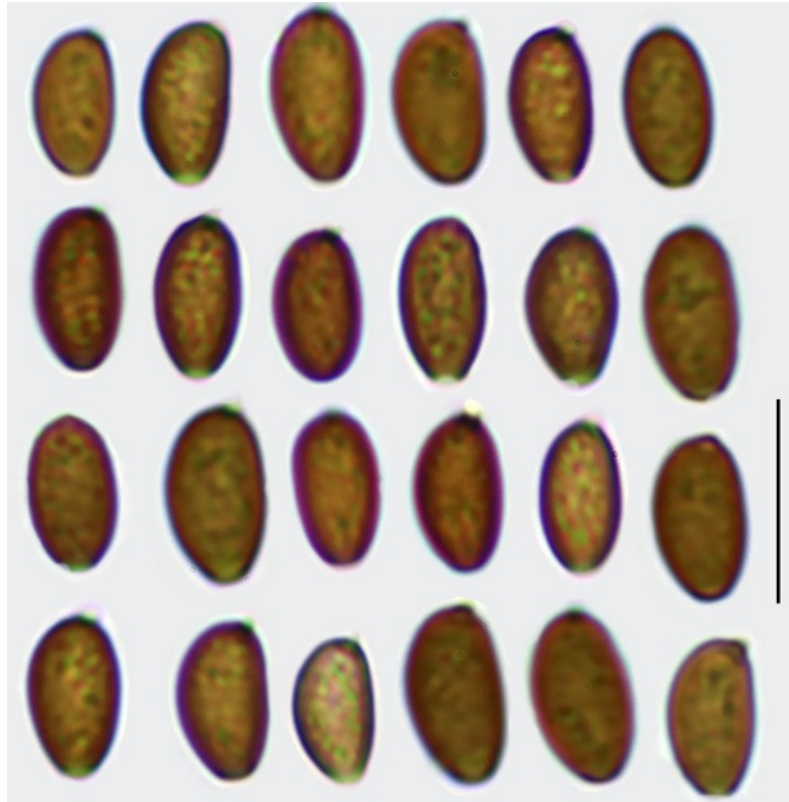


Microscopy Daniel Deschuyteneer

Basidia 4 spored , clavate. Clamps : present

Spore smooth, medium yellow brown and red brown, not opaque, ellipsoid and oblong in face view, asymmetric and flattened or slightly amygdaliform in profile, germ pore small or sometimes indistinct, central, conical and sometimes protruding.

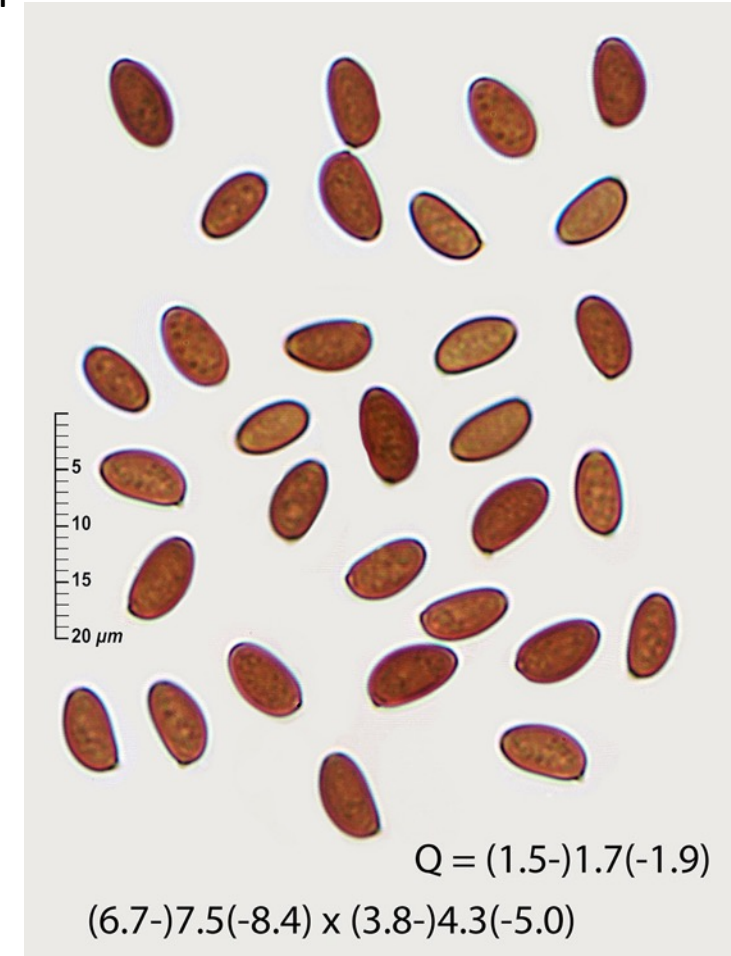
In one specimen lots of big spores from 2 spored basidia (not visualised). Scale bar = 10 µm.



Spores measures: (N = 100)

(6,4) 7,1 - 8,4 (9) × (3,5) 3,9 - 4,7 (5) µm ; **Me = 7,7 × 4,3 µm** ;

Q = (1,5) 1,7 - 1,9 (2,1) ; Qe = 1,8

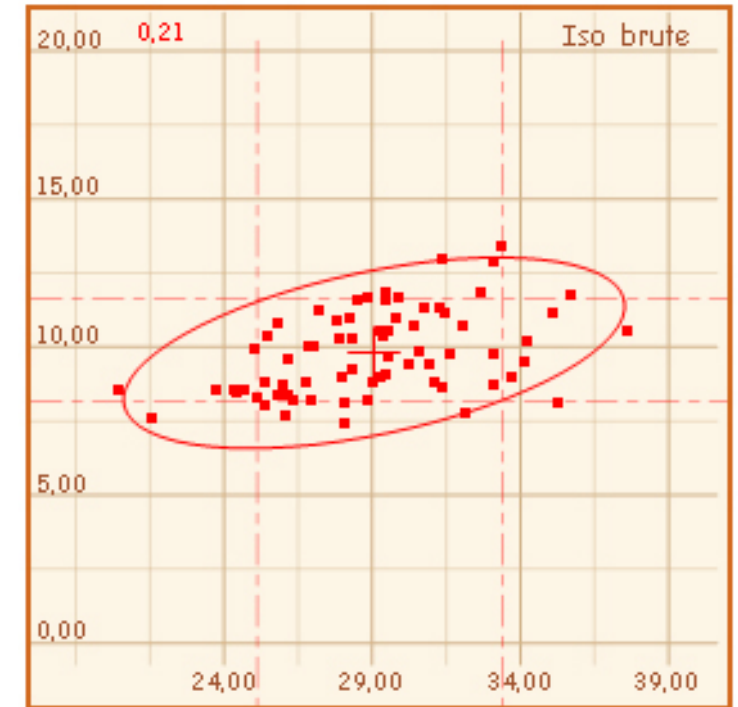
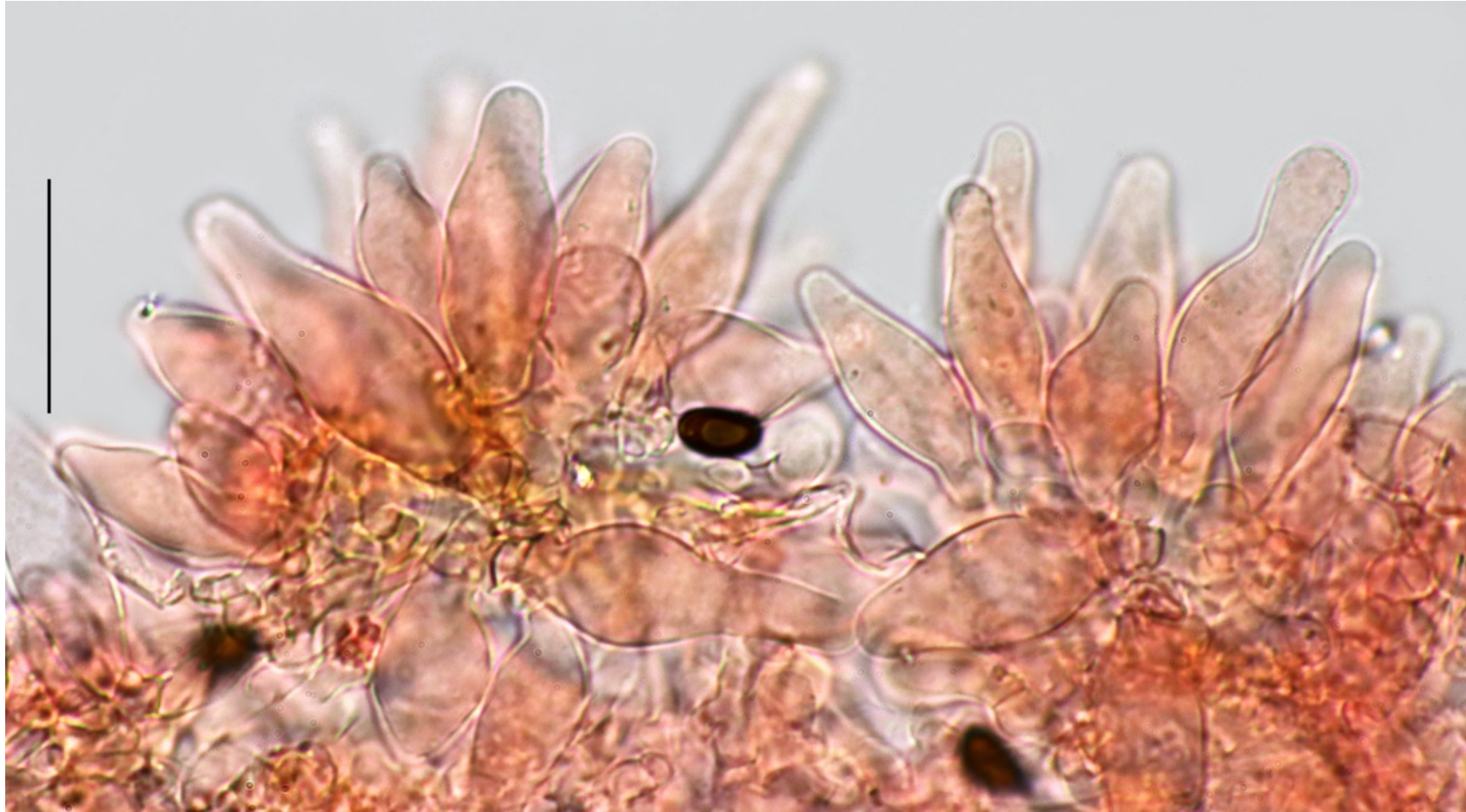


Spores E. Rubio

Cheilocystidia thin-walled, hyaline, usually densely packed but sometimes scattered, mixed with a large number of basidia and basidioles, lageniform with a long neck to utriform with a short and broad neck, not pedicellated, apex obtuse, sometimes capitate, not often forked.

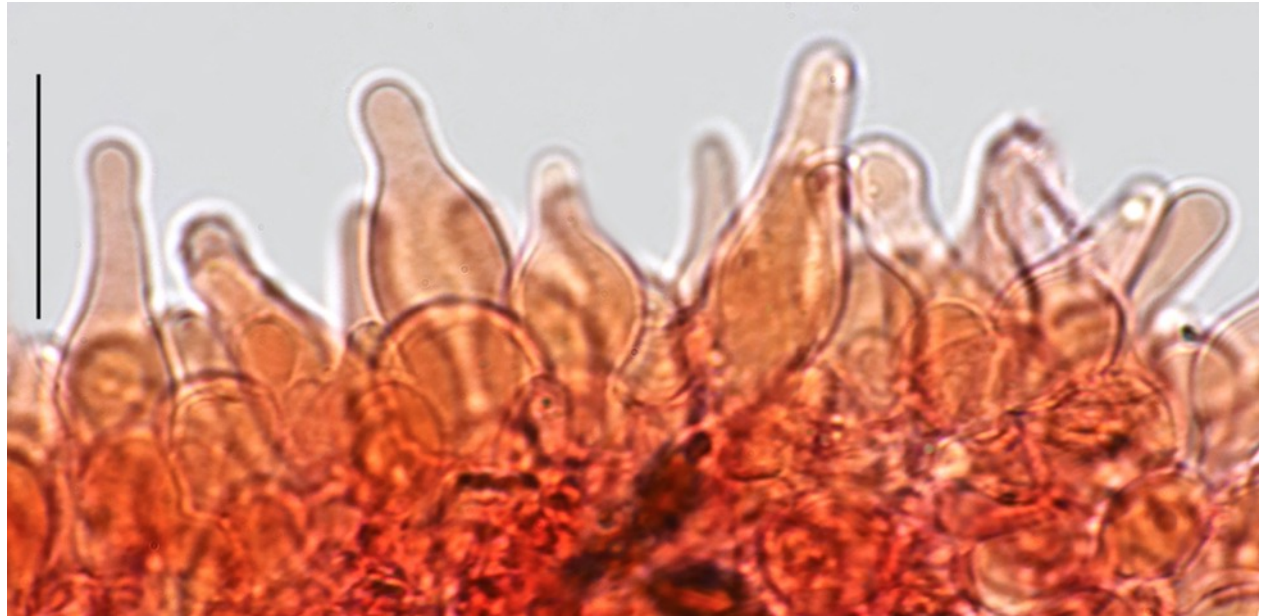
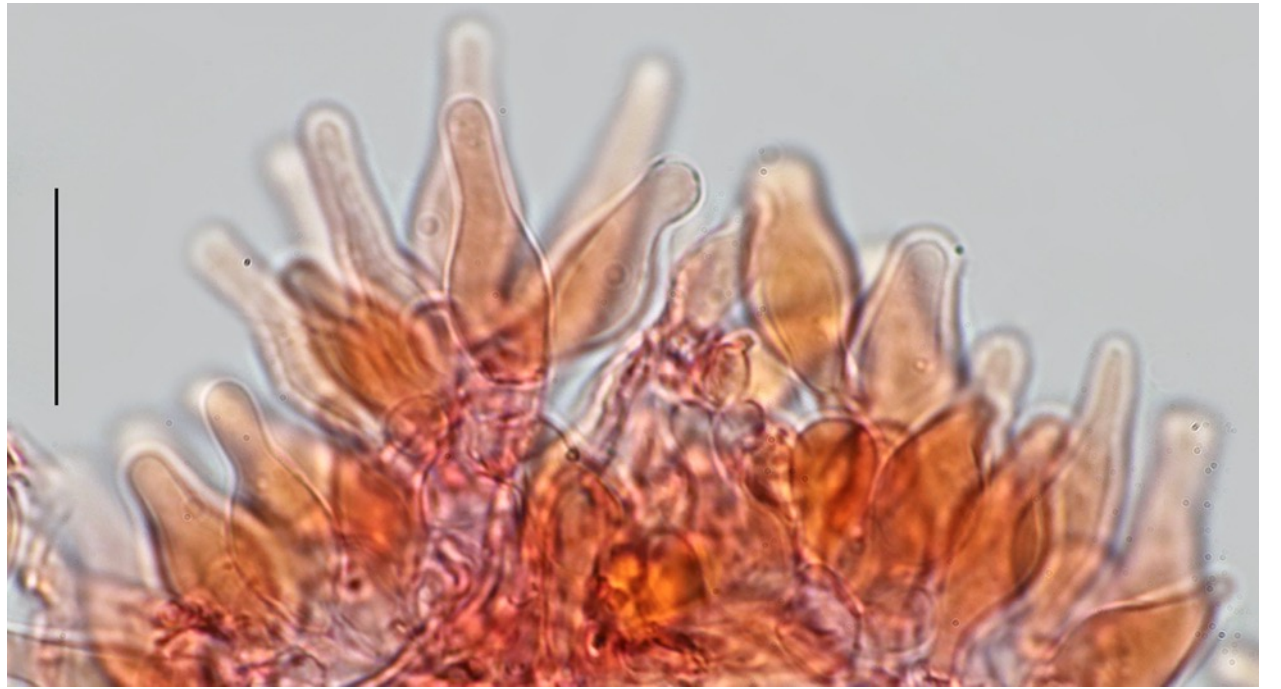
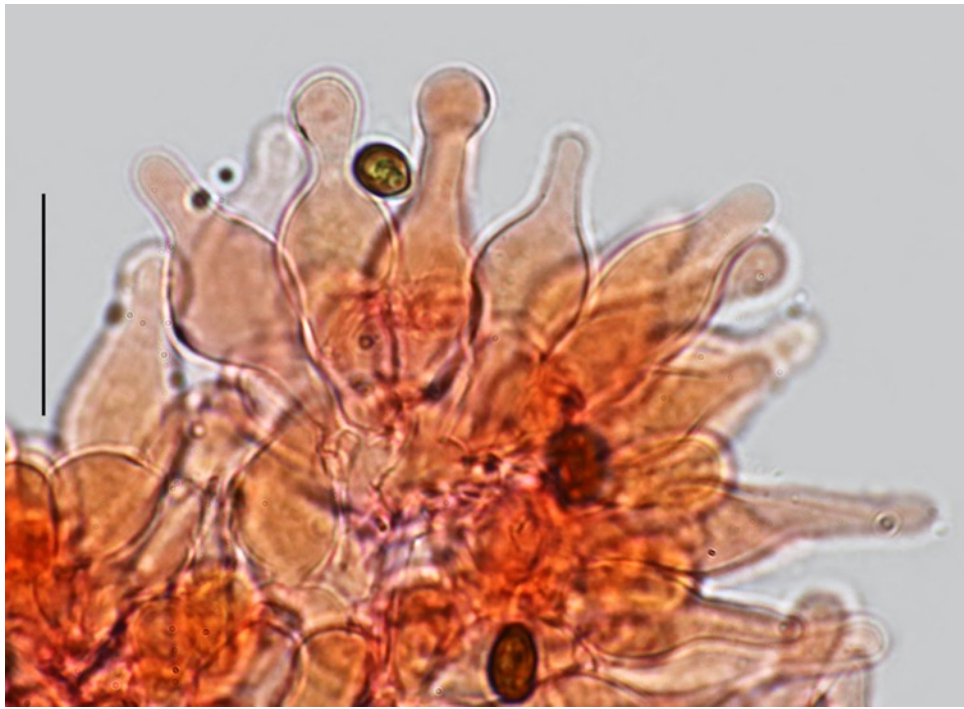
Near the margin of the cap, the cheilocystidia are less frequent and numerous thin-walled paracystidia are observed.

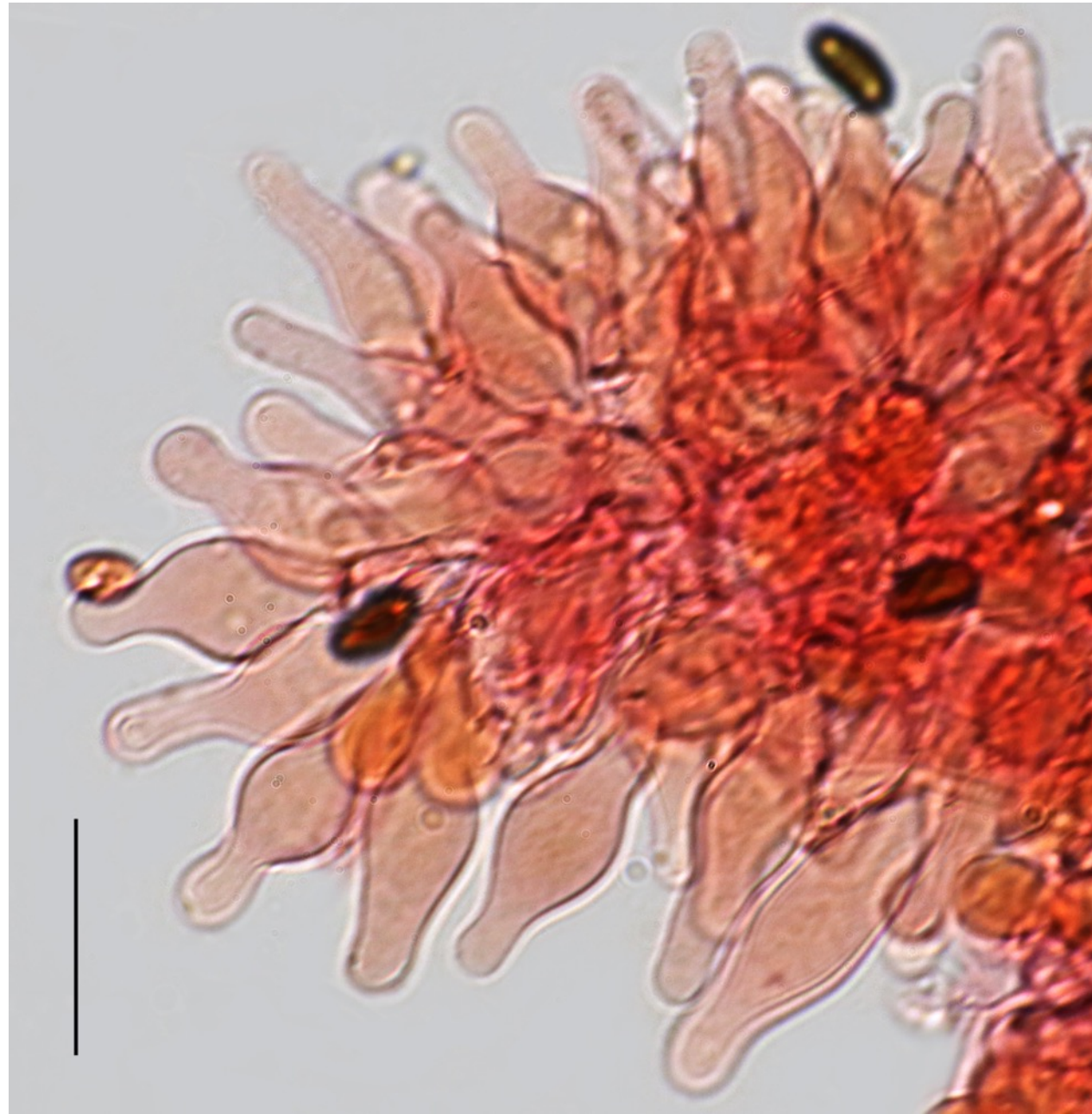
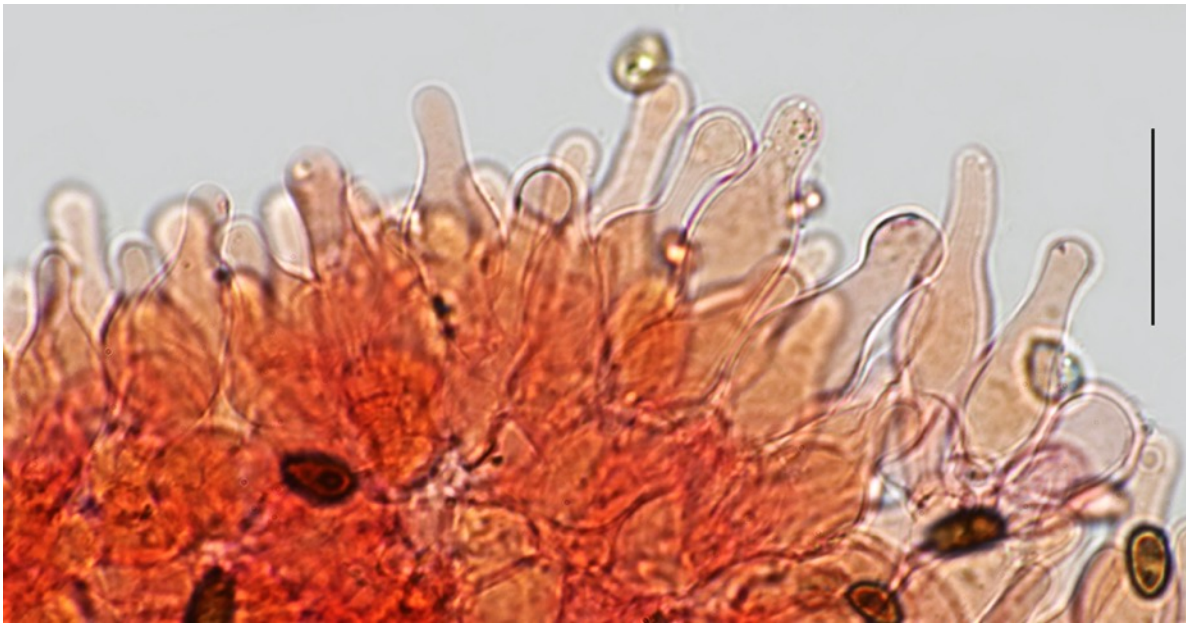
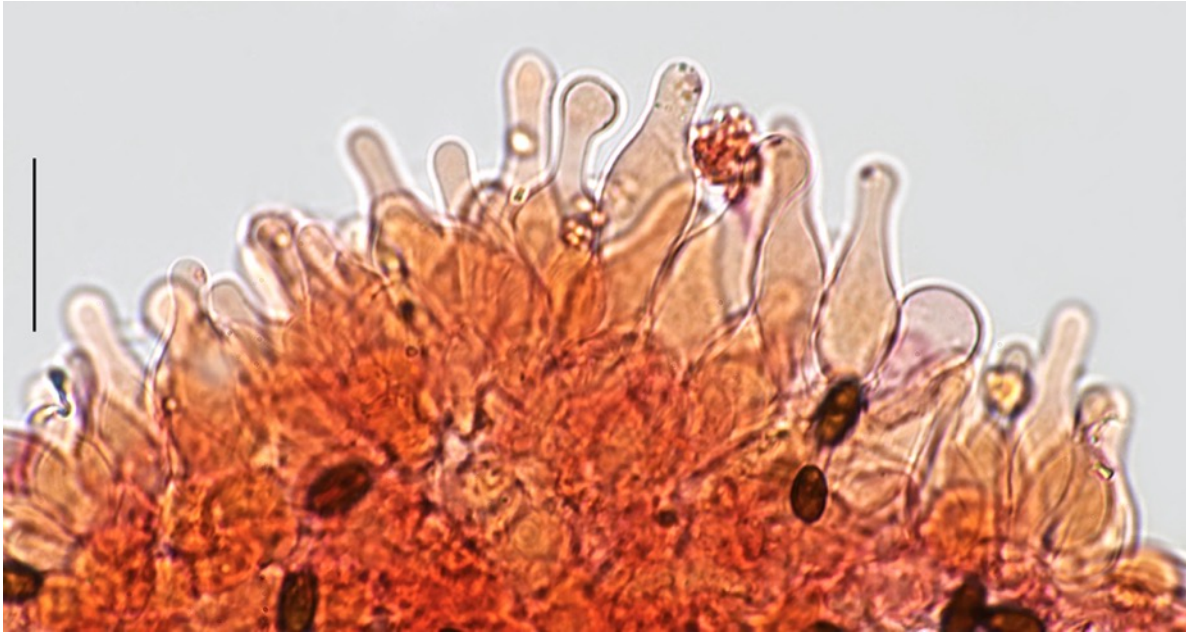
Scale bar = 20 μm

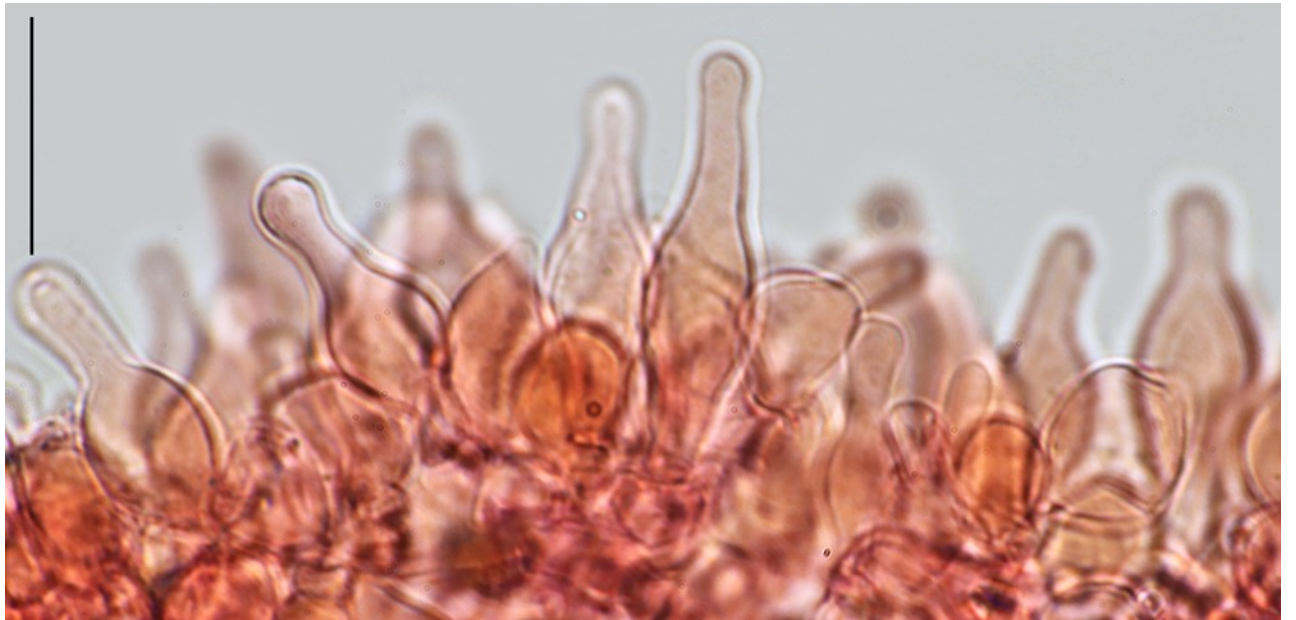
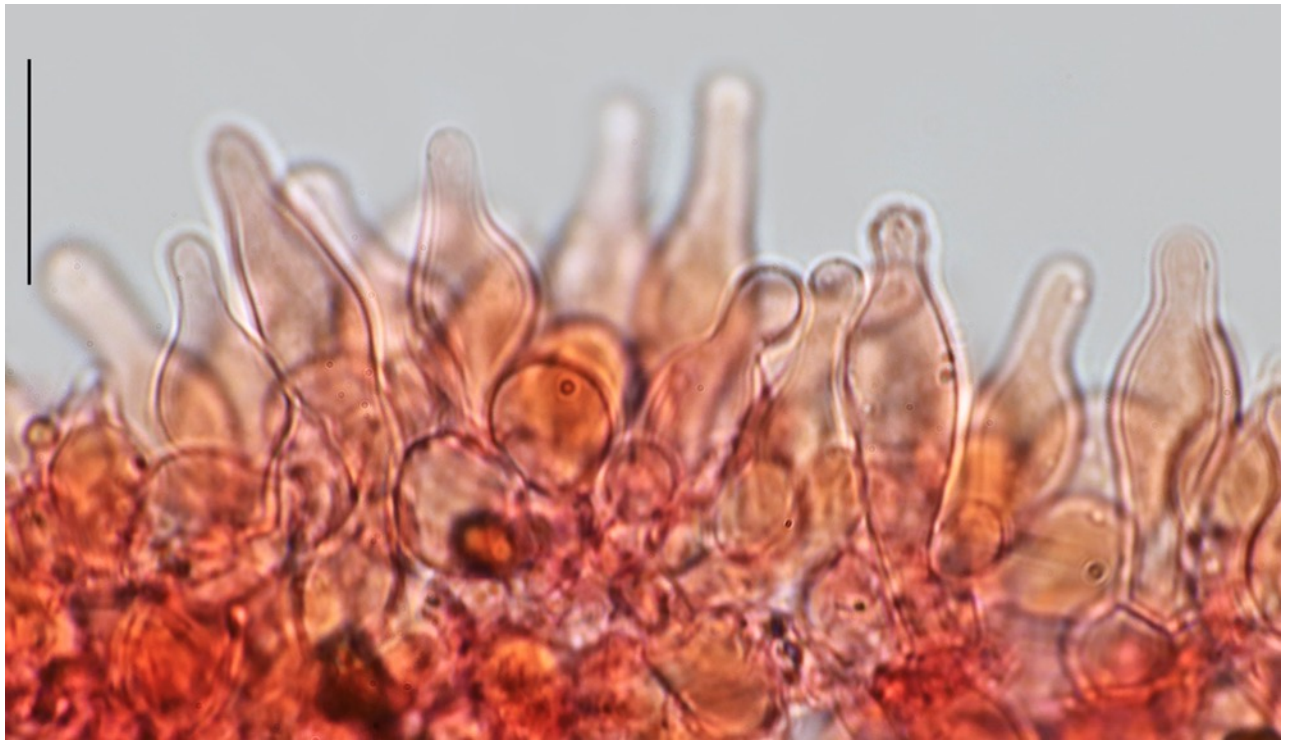
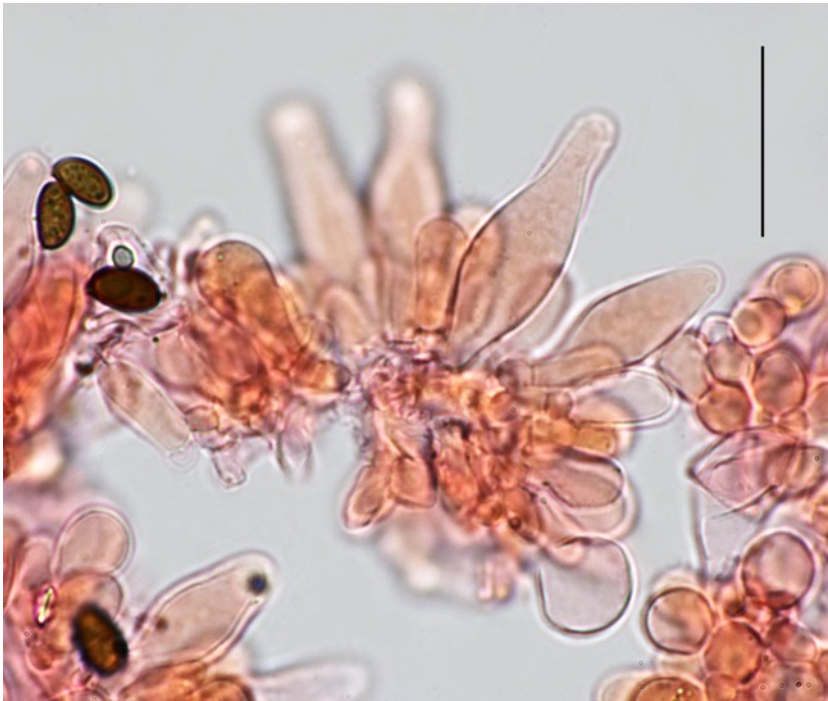
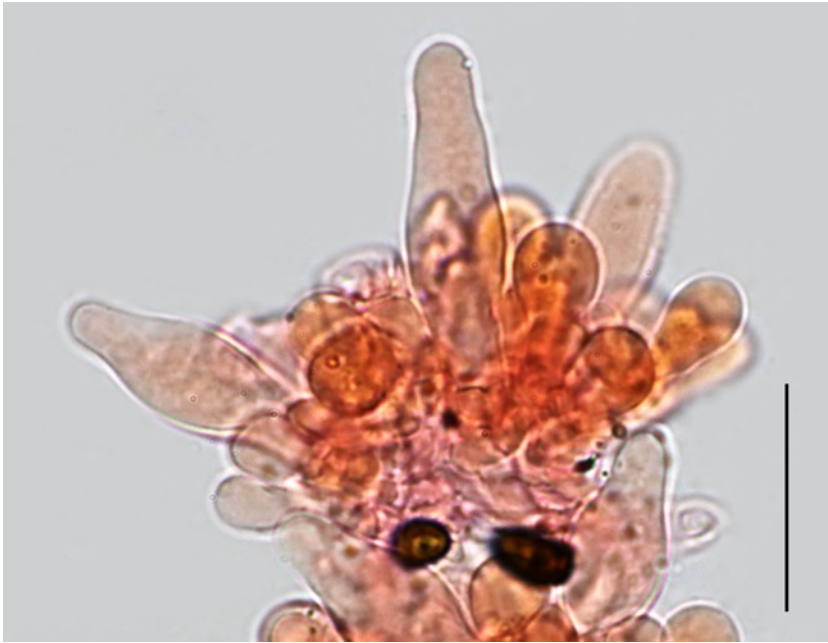


Measures N = 70

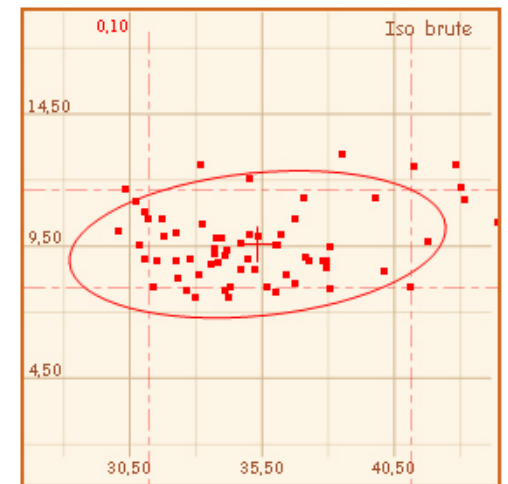
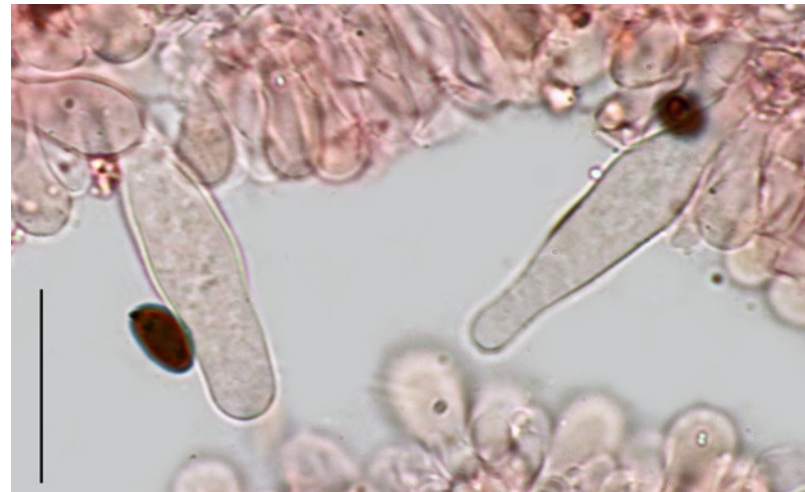
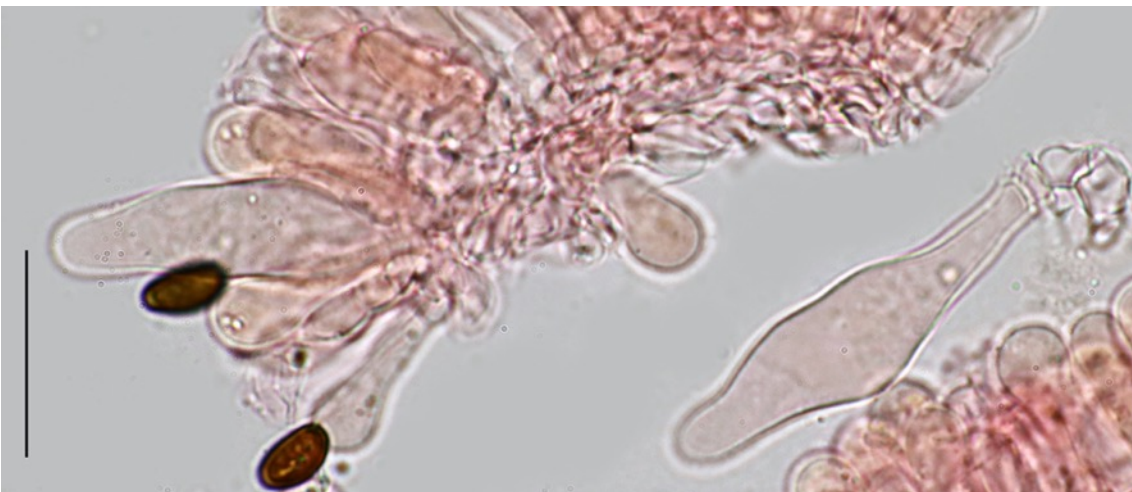
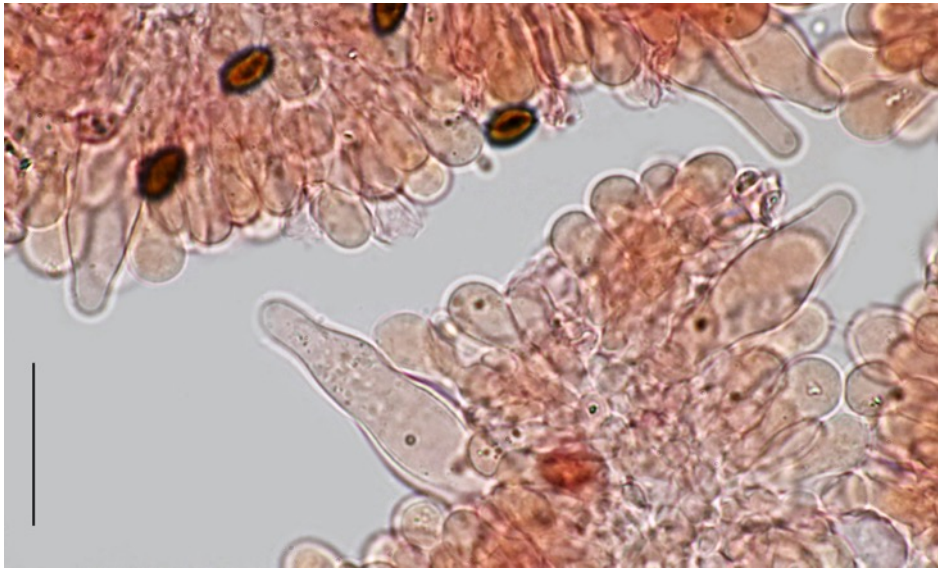
(20,4) 25,1 - 33,4 (37,6) \times (7,4) 8,2 - 11,6 (13,4) μm ; Me = 29,1 \times 9,8 μm

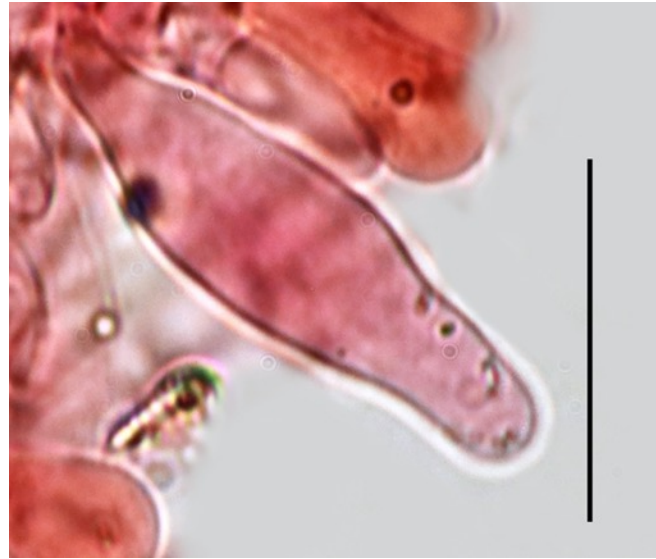






Pleurocystidia (N = 65) : (30,1) 31,2 - 41,1 (44,4) × (7,5) 7,9 - 11,6 (13) μm ; Me = 35,3 × 9,6 μm ; thin-walled hyaline, numerous, similar to the cheilocystidia but more often lageniform or cylindrical, not pedicellated, apex obtuse, not often capitate or forked. Scale bar = 20 μm





Littérature

Örstadius & Knudsen (2008): Funga Nordica p. 619

Smith (1972): Mem. New York Bot. Gard. 24: p. 406

The genbank code for 28065 is ON740913

2021-1866-ALV28065 DD-ER1 = length polymorphism, 130bp ok, 99.24% *Psathyrella rubiginosa* (KC992905)

```
NNCGGGNNCCACCTGAATTTGAGGTCAATTGTCAAAAATT
GTCTTTACAGACGGTTAGAAGCAAGTCTAAGTTCCATCCA
CGGCGTAGATAATTATCACACTAATAGACGGAGCTCAGTT
TGAACCTGCTAATCCATTTGAGAGGAGCAGTCAGCAGTTA
AGCCTTCCGCACCACCCCCCATCCCAGCTTCACACAGTT
TCATAACAAAACCTGAAGAAATTGAAAATTTAATGACACTC
AAACAGGGATGGTCCTCGGAATACCCAGGAACGCAAGGGG
GGTTCAAAGAATCCATGAATCACTGAATTCCGCAATTCAC
ATTACTTATCGCATTTCCCTGCGTTCTTCCTCCATGCCAG
AGCCCAGAAAACCCTTGCTGAAAGTTGGATTTTGTTTTAT
AGGGTAAAAGCCCATTGACTACATTCTTCATTATACAAAT
GGGGGTTGGGAAAAAACATAAACCCGGGAAATTCAAAAAA
GCTTGGGCTTGGGACCCAACAATCCCTGGATCCGCCCCAA
AGAACGAAAGTTATCCCGGGCCACCTTAAGTGGACAGGGG
GAAAGAAAAAATGAAGGGGGGGGACATGGCCCCAAAAAC
CCGCTACCACCCACGCCCTAAAATTTCTTAATGAACCCT
CCGCAGGGTCACCCACCGAAACCCTGGTACCAATTTTACT
TCCTCAAAGGGAACCAAGAAA
```