

***Psathyrella pseudogracilis* f. *substerilis* E. Ludwig 2007**
in Ludwig, Pilzkompodium Band 2, 685



29/08/2021 - Among mulch. Diameter 15 mm. Gills white with greyish dots. Base of stipe rooting

Spores smooth, dark reddish brown, opaque, oblong in face view, amygdaliform in profile, germ pore large, distinct, central.



Scale bar = 10 μm

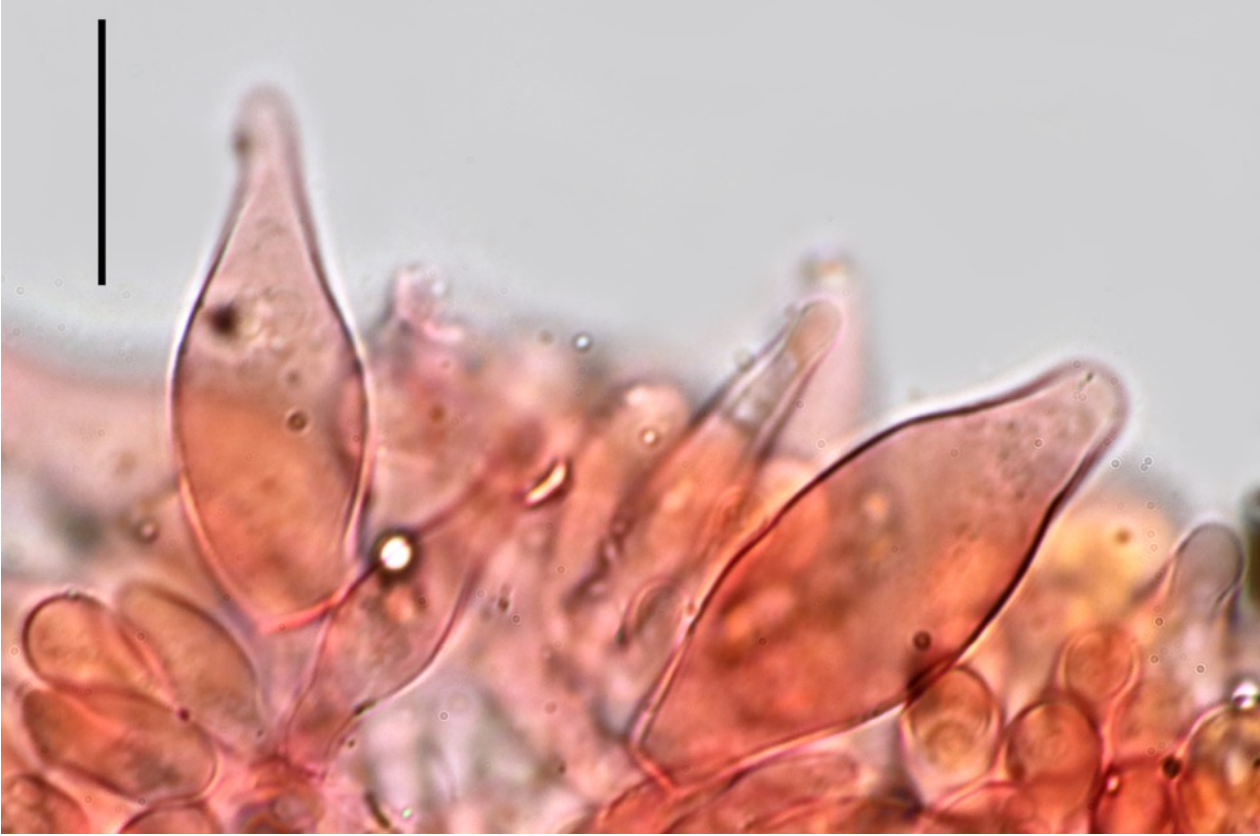
N = 30

(12,9) 13,1 - 15,2 (16,1) \times (6) 6,1 - 7 (7,3) μm

Me = 14,1 \times 6,5 μm ;

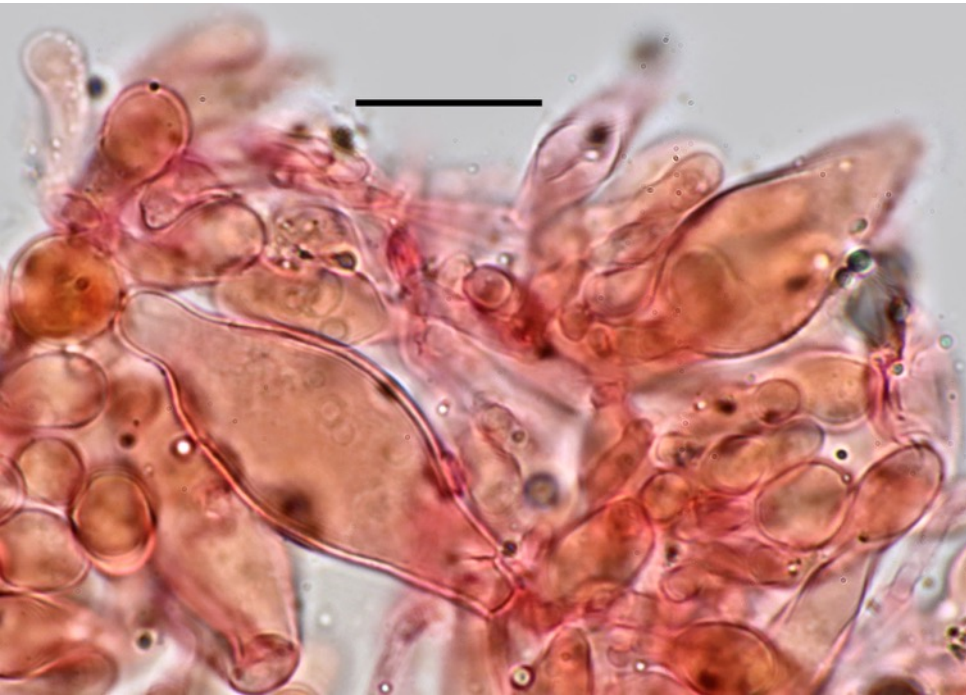
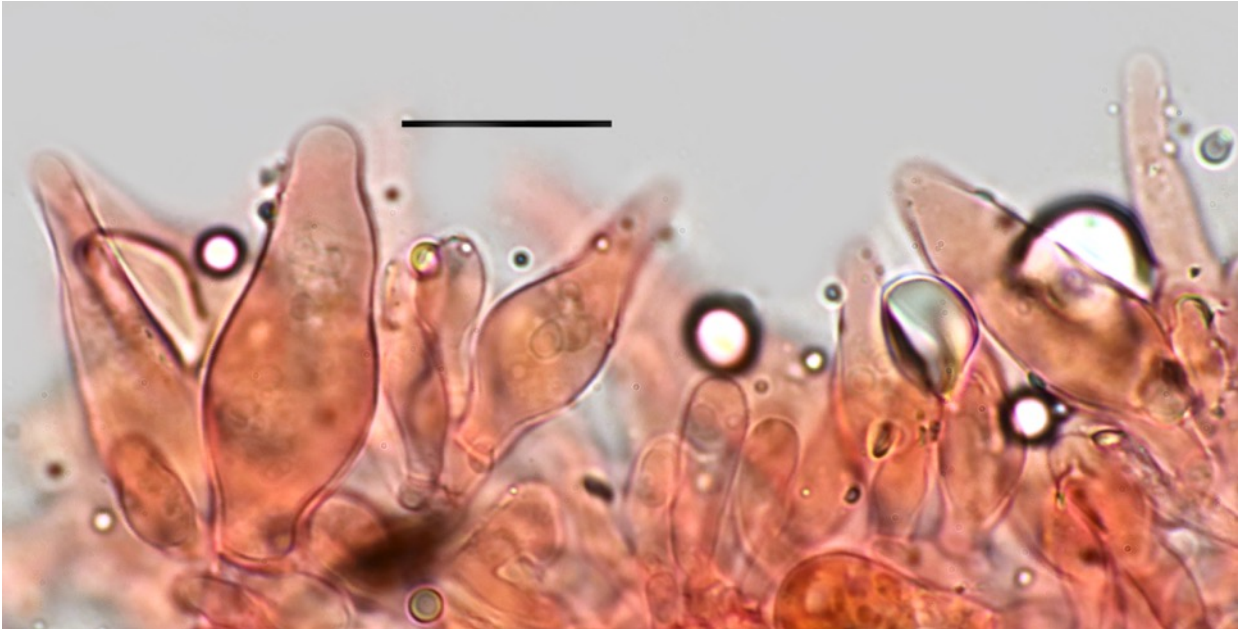
Q = (1,9) 2 - 2,3 (2,5) ; Qe = 2,2

Cheilocystidia abundant, hyaline, thin-walled, polymorphic among which many large utriform one.



Gill edge, presence of numerous insignificant mucoid drops as often observed when examining fresh specimens of this group.

Scale bar = 20 μm



Pleurocystidia numerous, hyaline, thin-walled, polymorphic but essentially uniform .
Scale bar = 20 μm

