

***Psathyrella lutensis* (Romagn.) M. M. Moser ex Bon 1982** in Docum. mycol. 12(48): 52

Daniel Deschuyteneer – Lothar Krieglsteiner – Philippe Cercley



Photo in situ Lothar Krieglsteiner. Norway, Lusaeter near Vaga ; 17/07/2022

On wet turf together with *Carex*, *Juncus*, and other mire plants. A little fertilization is possible because of cows and sheep.

Habitat :

On wet turf together with Carex, Juncus, and other mire plants. A little fertilization is possible because of cows and sheep. Rare diatoms contaminating a specimen observed under microscopic examination.

Macro characteristics :

Small species, initially conico-campanulate, becoming plano-convex.

The **cap** is fawny brown, striated from the margin to 3/4 of the radius.

Veil whitish fibrilous connecting the margin of the cap to the stipe on young specimens, rapidly volatile and disappearing at maturity.

Gills moderately tight, initially whitish before turning greyish-beige, adnate, ventricose, with a white, fimbriated edge.

Stipe cylindrical with a very slightly dilated and strigose base, pruinose at the top, slightly fibrillose in its lower half.

Micro characteristics

Basidia: 4-spored clavate

Spores N = 50 : (9,2) 9,4 - 10,7 (11,3) × (4,5) 4,9 - 5,4 (5,8) μm ; Me = 10 × 5,2 μm ; Q = (1,7) 1,8 - 2,1 (2,2) ; Qe = 1,9 reddish-brown, subopaque and opaque, oblong in face view, flattened on one side and somewhat amygdalyform in profile, germ pore central, large, distinct.

Pileipellis : one layer of usual globose cells, some cylindrical fibrils of the veil still adherent.

Clamps : present

Cheilocystidia : measuring N = 80 : (27,4) 32,1 - 50,6 (60,4) × (6,7) 8,4 - 14,1 (18) μm ; Me = 41,2 × 11,2 μm ; densely packed mixed with some basidia and clavate paracystidia, fusi-lageniform, hyaline, thin-walled, with a long, narrow and sometimes very long neck, obtuse at top, rarely forked, base shortly pedicellate. Small number of large utriform cystidia are also present.

Pleurocystidia : measuring : N = 77 : (41,1) 46,7 - 60,3 (69,2) × (9,7) 13,4 - 17,3 (18,3) μm ; Me = 53,4 × 15,3 μm ; numerous, thin-walled, hyaline, similar to cheilocystidia but with generally a shorter narrow neck, apex obtuse, rarely forked. A small number of large utriform cystidia are also present.



Photo in situ : Lothar Krieglsteiner

Small species, initially conico-campanulate, becoming plano-convex.

The **cap** is fawny brown, striated from the margin to 3/4 of the radius.

Veil whitish fibrilous connecting the margin of the cap to the stipe on young specimens, rapidly volatile and disappearing at maturity.



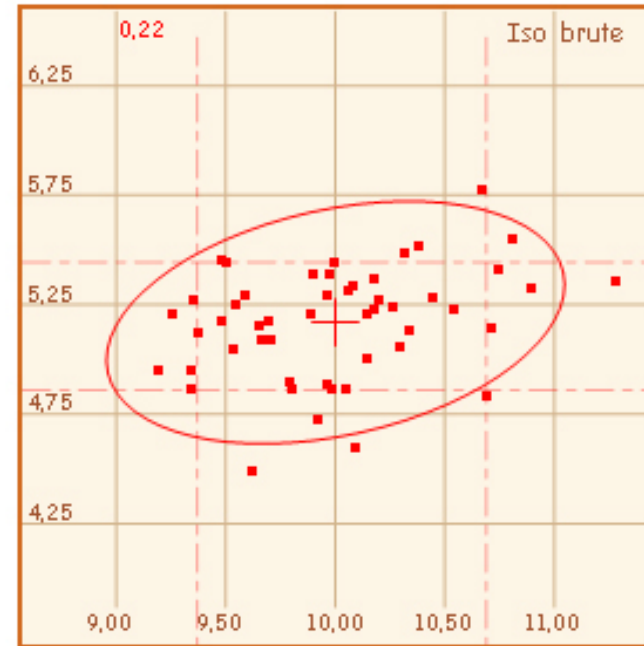
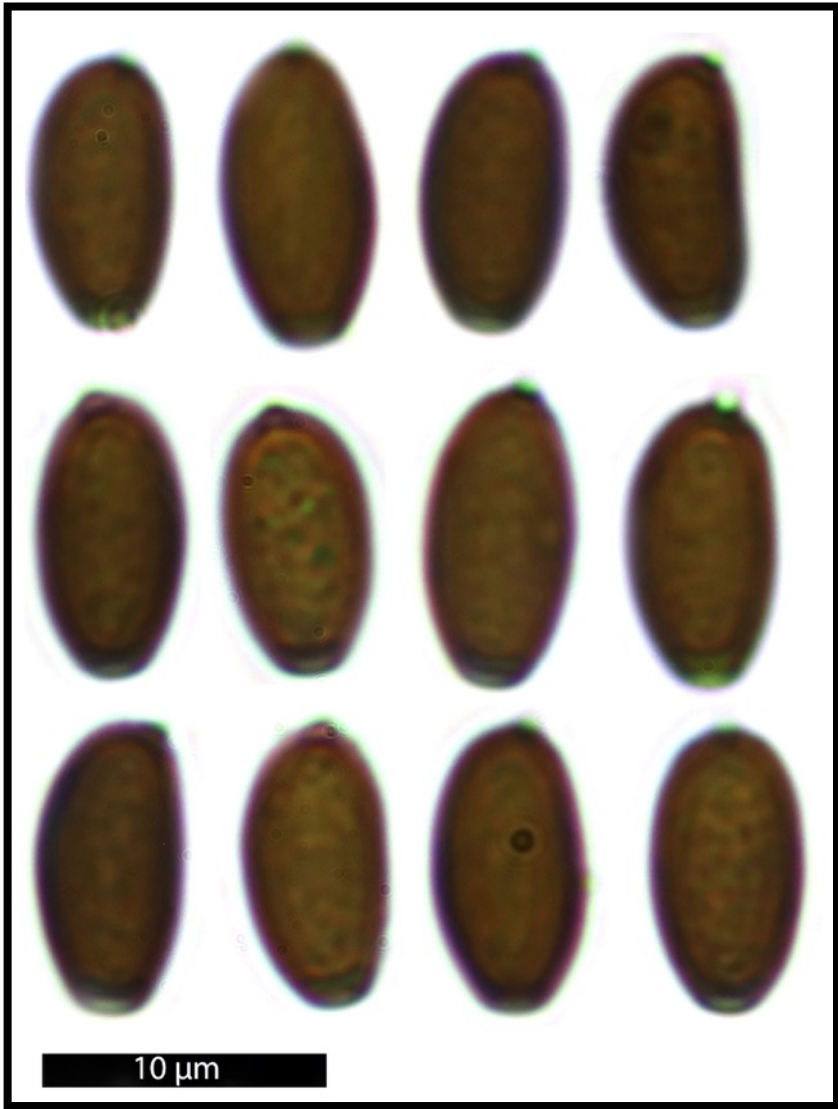
Veil whitish fibrilous connecting the margin of the cap to the stipe on young specimens, rapidly volatile and disappearing at maturity.

Gills moderately tight, initially whitish before turning greyish-beige, adnate, ventricose, with a white, fimbriated edge.

Stipe cylindrical with a very slightly dilated and strigose base, pruinose at the top, slightly fibrillose in its lower half.

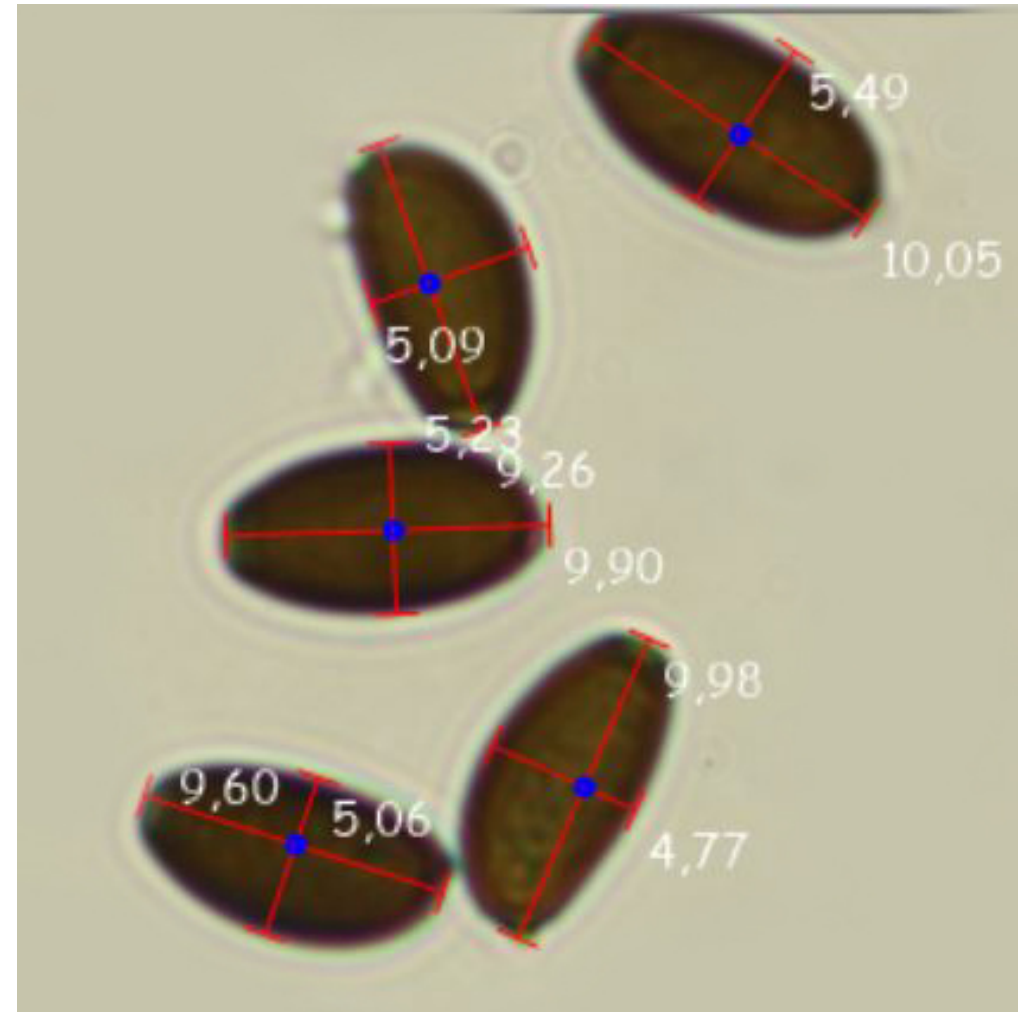
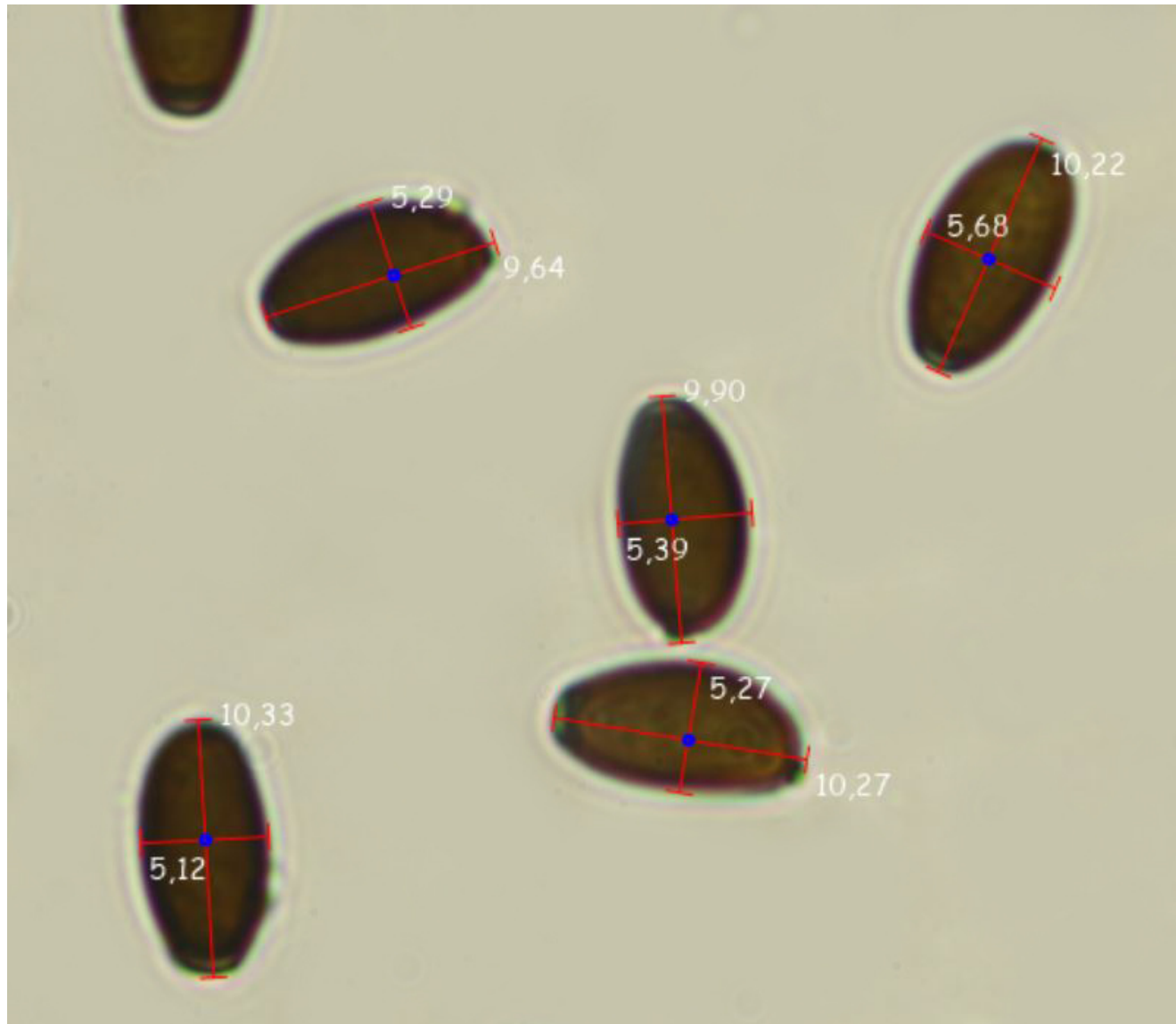
Photo in situ : Lothar Krieglsteiner

Spores reddish-brown, sub-opaque and opaque, oblong in face view, flattened on one side and somewhat amygdalyform in profile, germ pore central, large, distinct.



Spores measurements : N = 50
 (9,2) 9,4 - 10,7 (11,3) × (4,5) 4,9 - 5,4 (5,8) µm ;
Me = 10 × 5,2 µm ;
 Q = (1,7) 1,8 - 2,1 (2,2) ; Qe = 1,9

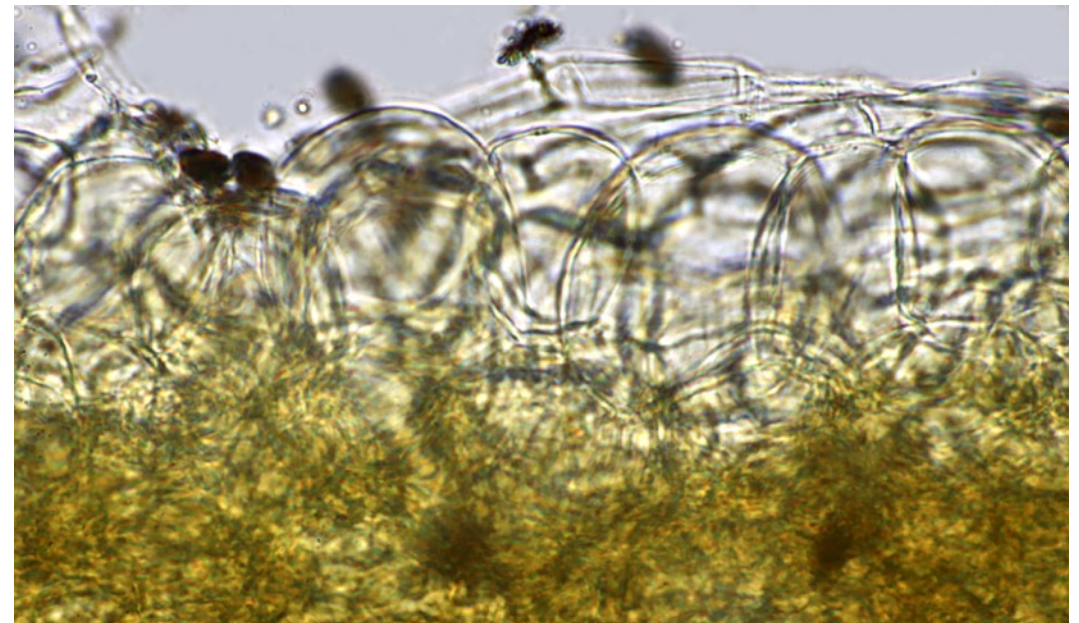
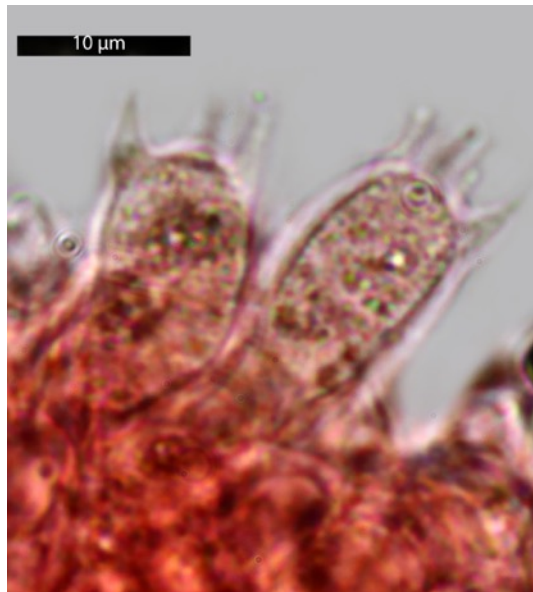
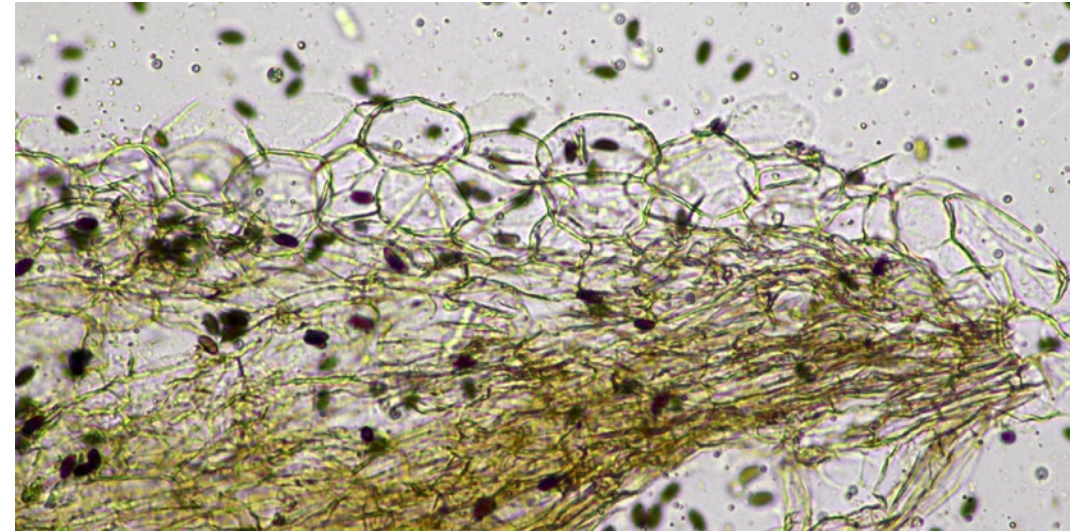
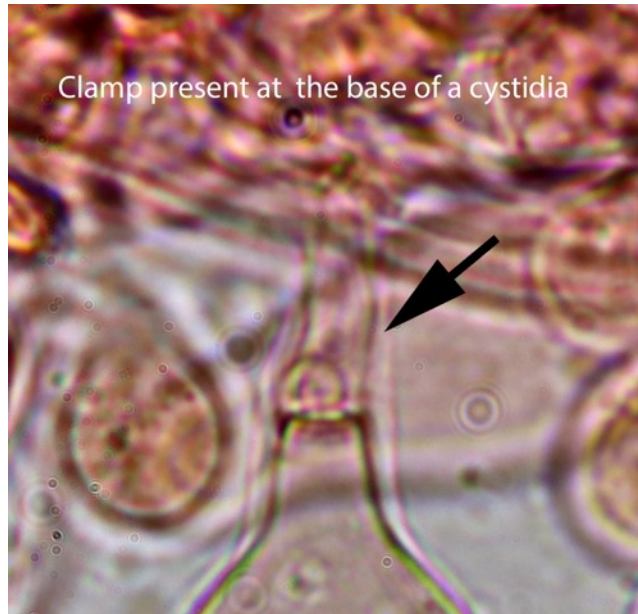
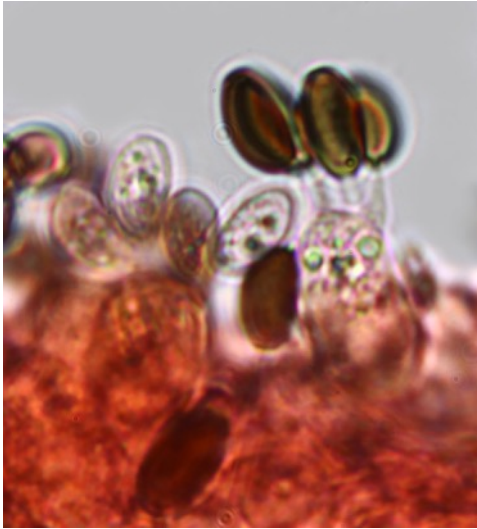
Some spores measurements done with Piximètre



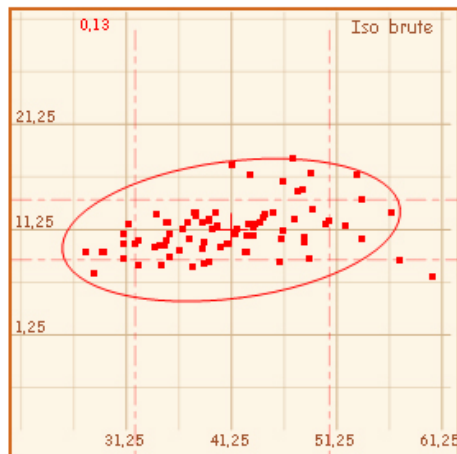
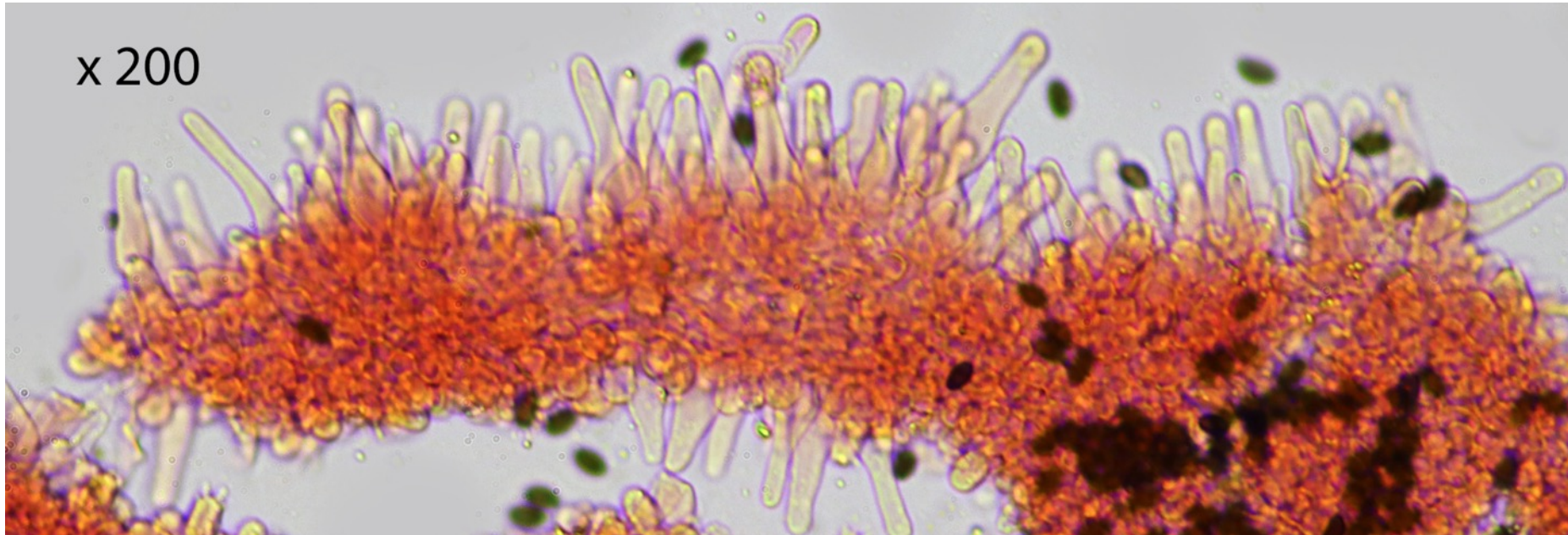
Basidia: 4-spored clavate

Pileipellis : one layer of usual globose cells, some cylindrical fibrils of the veil still adherent.

Clamps : present

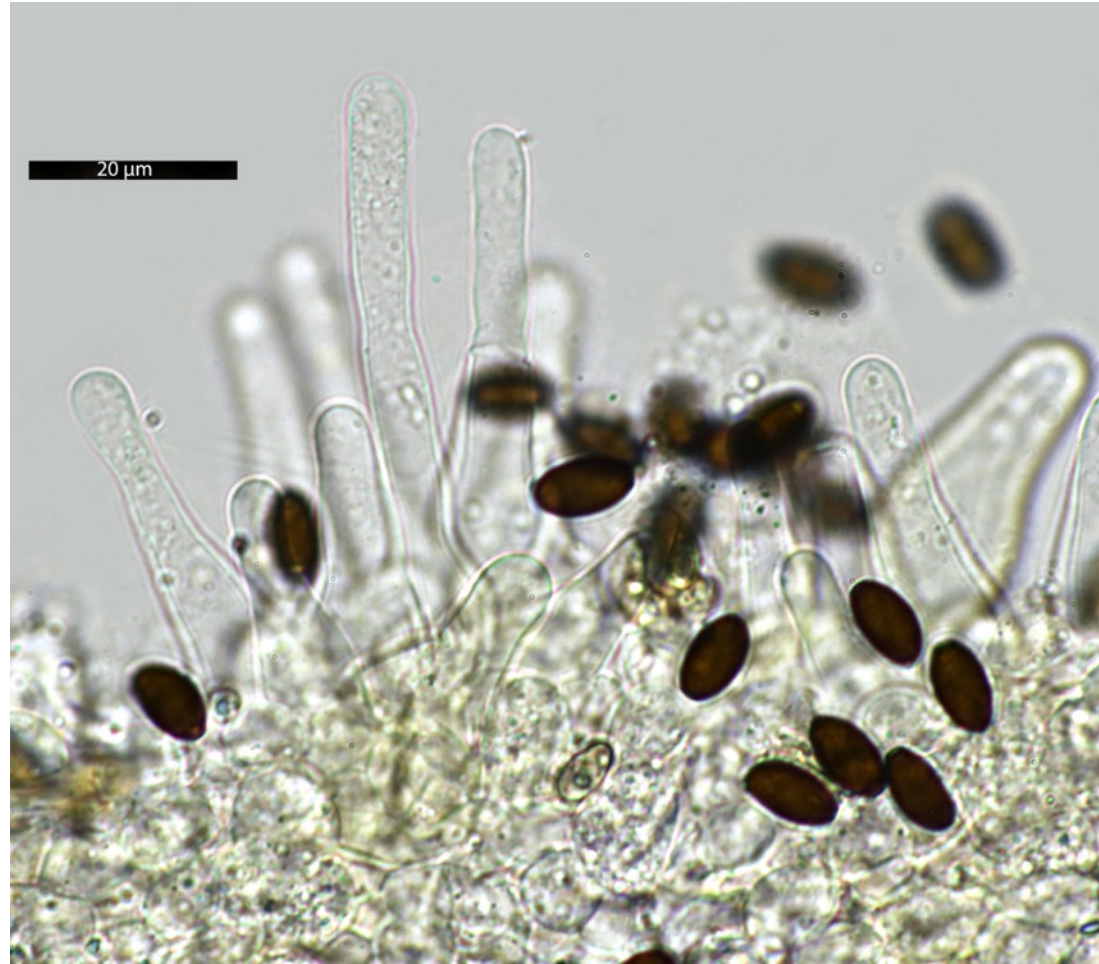


Cheilocystidia : measuring (N = 80) : (27,4) 32,1 - 50,6 (60,4) × (6,7) 8,4 - 14,1 (18) μm ; Me = 41,2 × 11,2 μm ; densely packed mixed with some basidia and clavate paracystidia, essentially lageniform, hyaline, thin-walled, with a long, narrow and sometimes very long neck, obtuse at top, rarely forked, base shortly pedicellate. In variable quantities depending on the specimen, utriform cheilocystidia are also present.

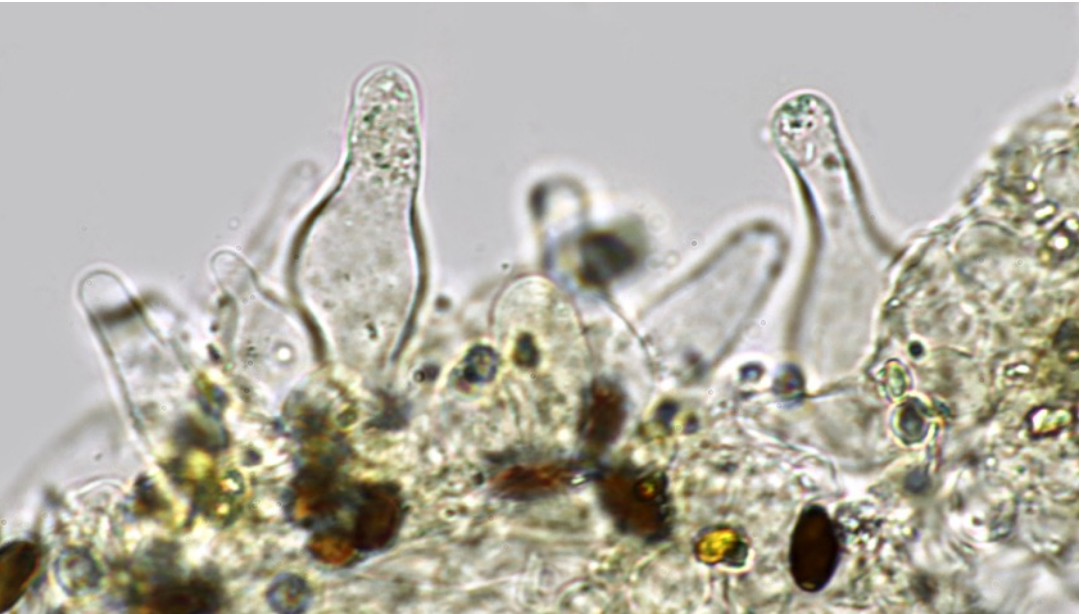
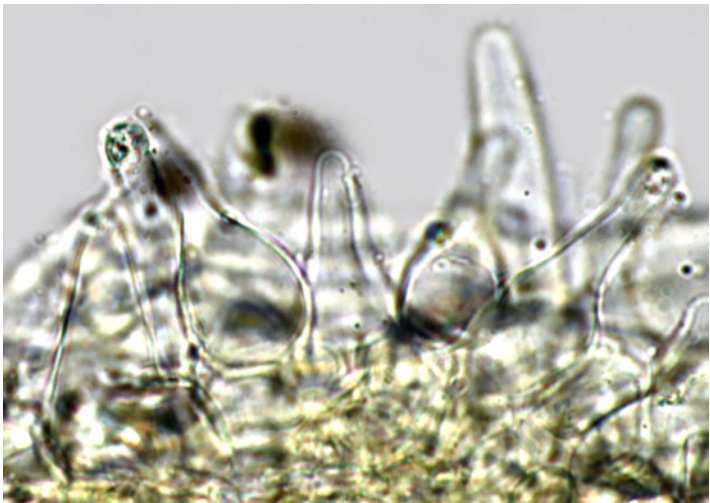
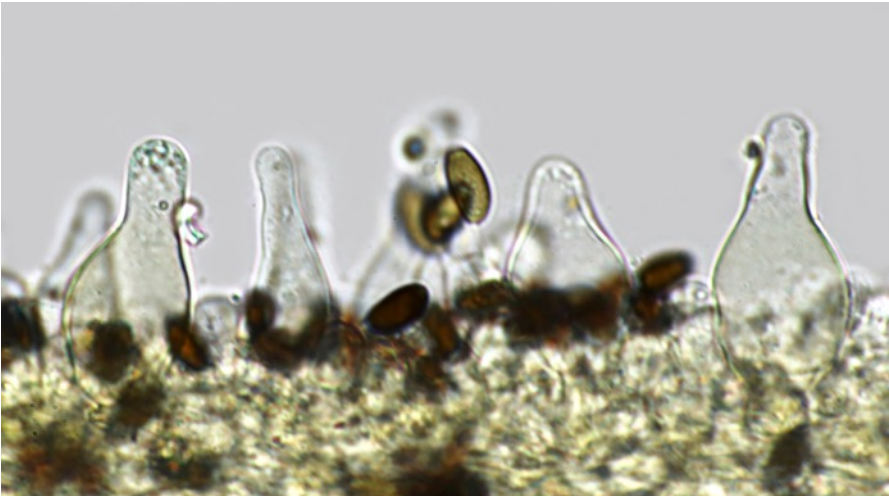
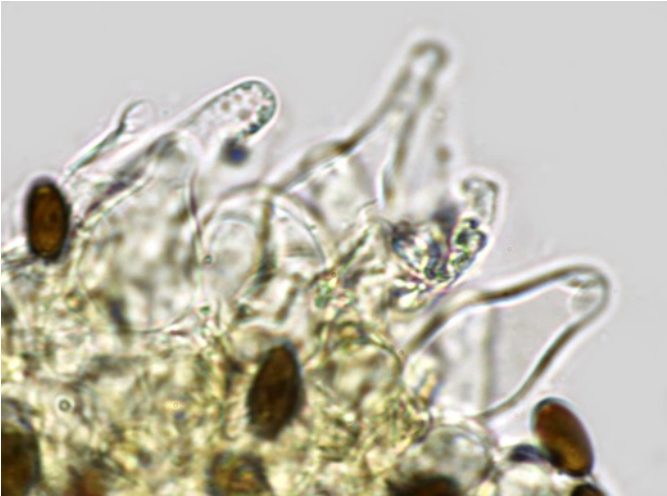


Cheilocystidia measurements : N = 80
(27,4) 32,1 - 50,6 (60,4) × (6,7) 8,4 - 14,1 (18) μm
Me = 41,2 × 11,2 μm

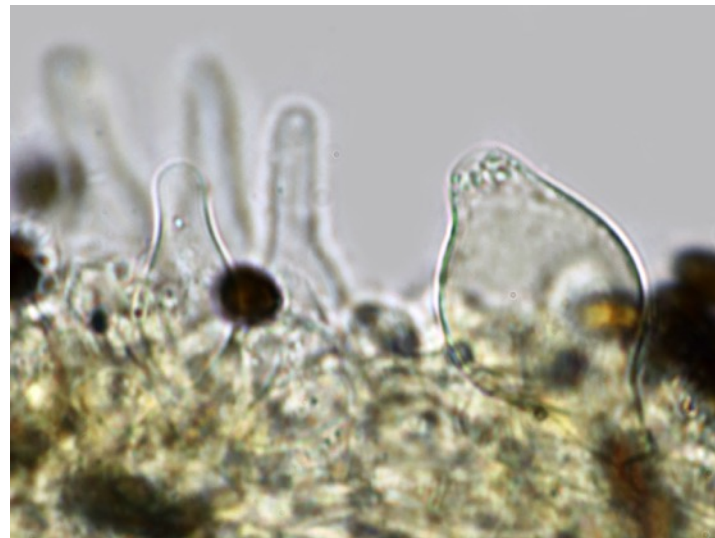
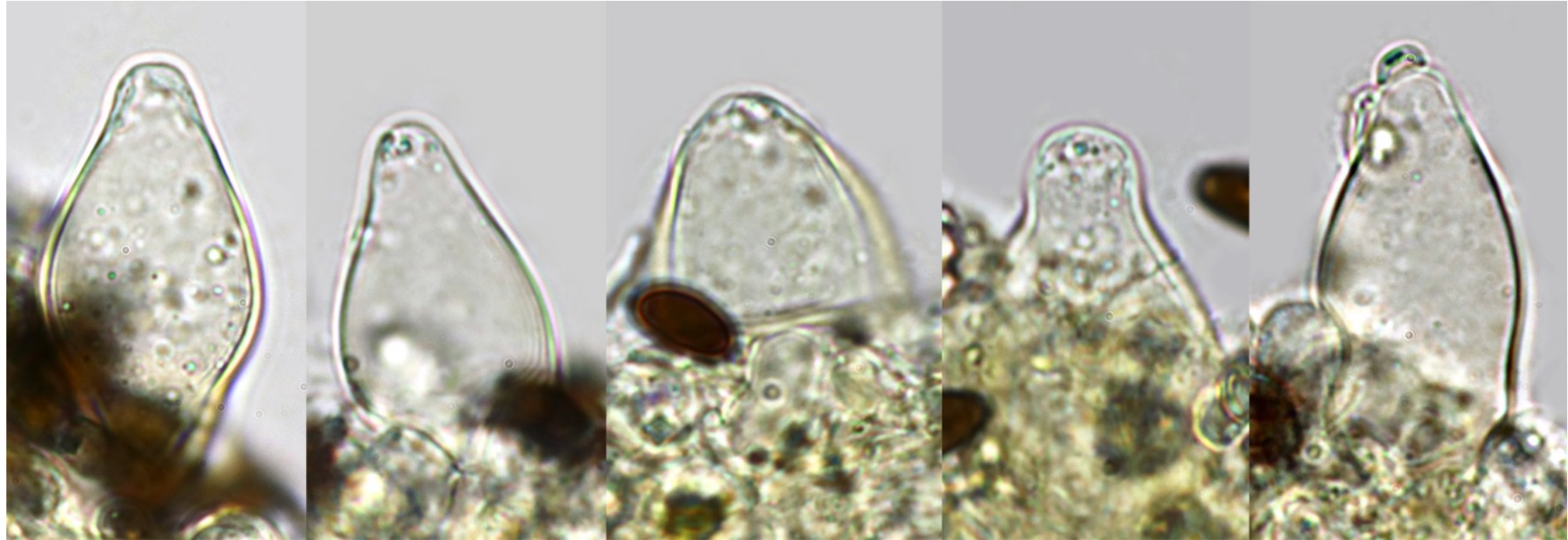
Cheilocystidia : densely packed mixed with some basidia and clavate paracystidia, hyaline, thin-walled, lageniform, with a long, narrow and sometimes very long neck. Apex obtuse, rarely forked, base shortly pedicellate. In variable quantities depending on the specimen, utriform cheilocystidia are also present.



In ammonia, typical greenish granulations can be seen at the top of some cystidia. These granulations are more easily seen in utriform pleuro or cheilocystidia. The numerous greenish mucoid drops that cover the cheilocystidia disappear in exsiccata.



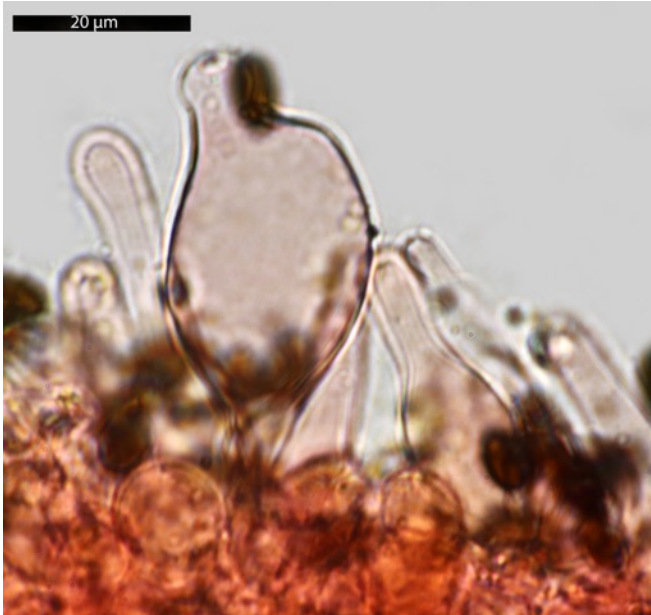
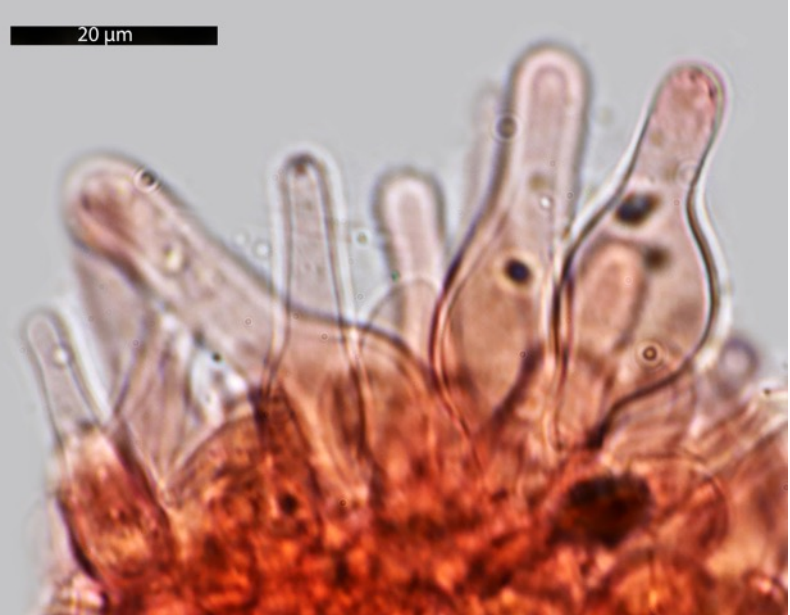
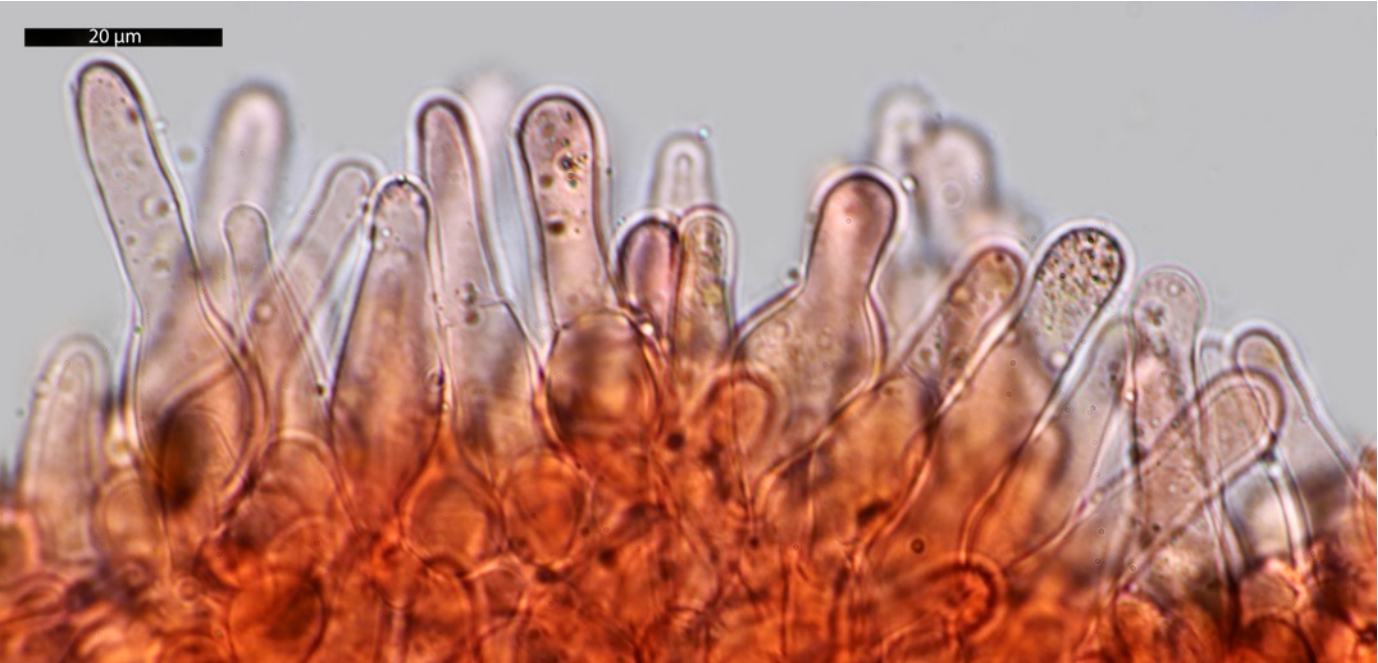
These granulations are more easily seen in utriform pleuro or cheilocystidia

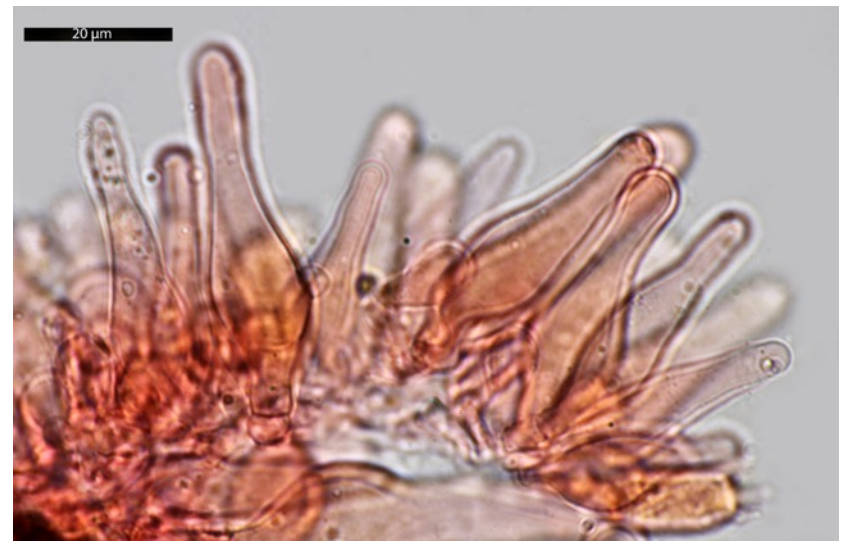
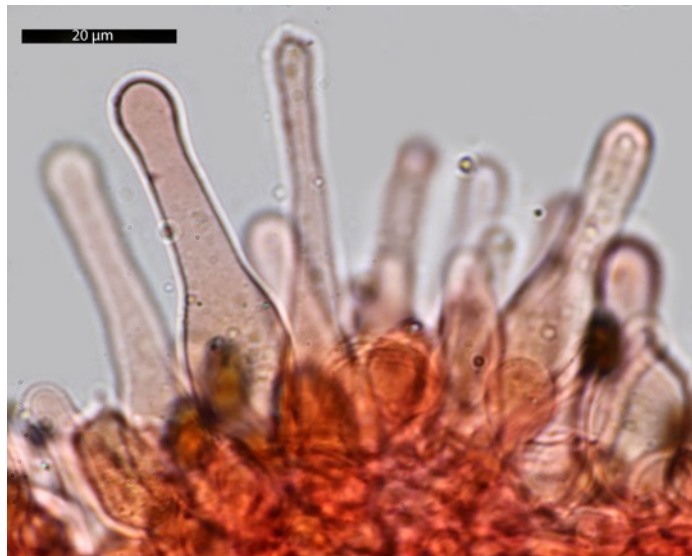
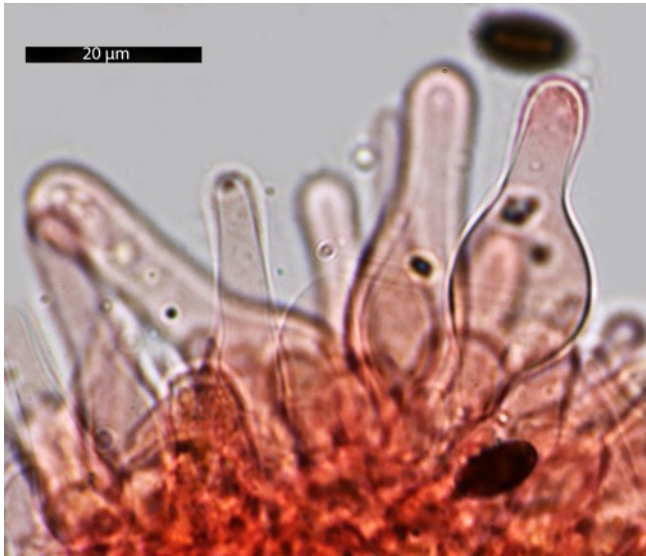


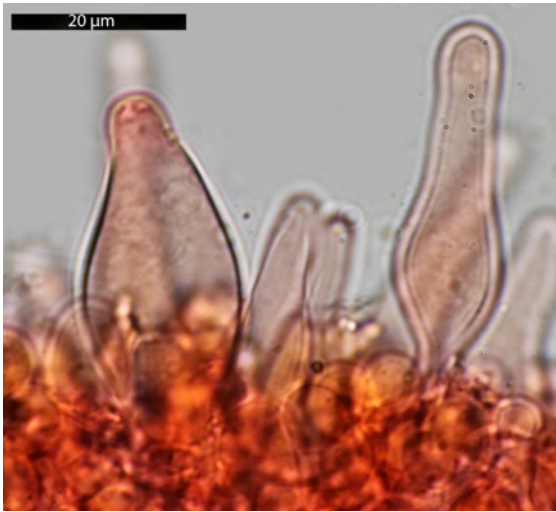
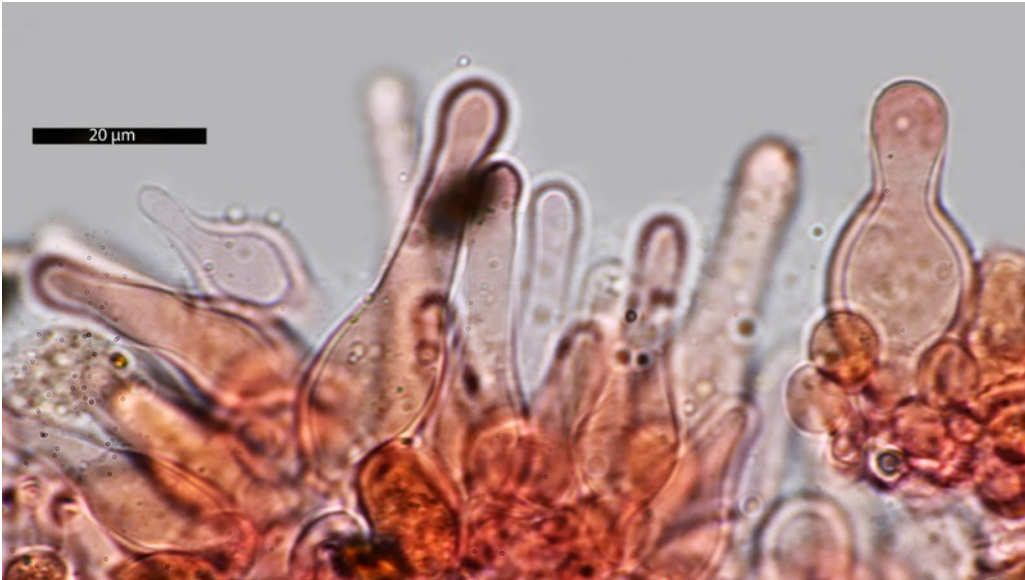
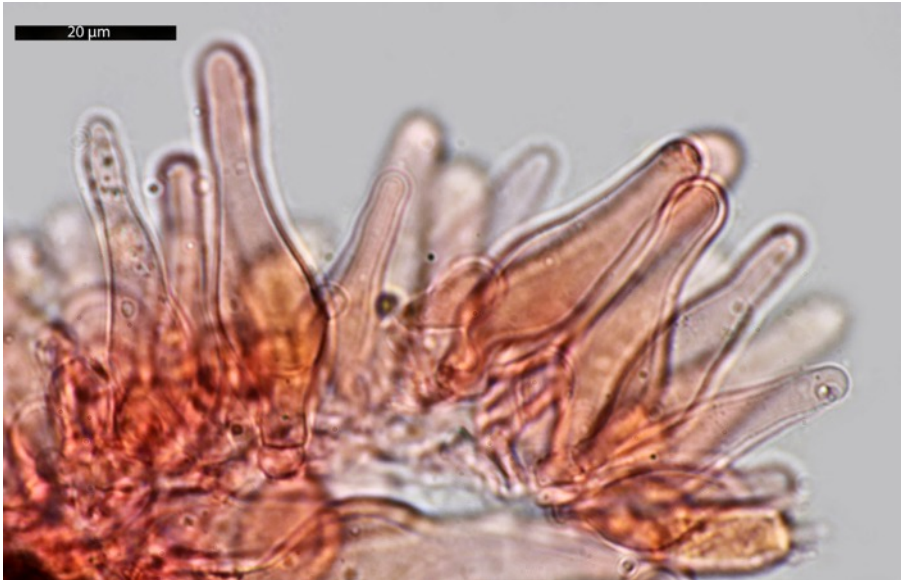
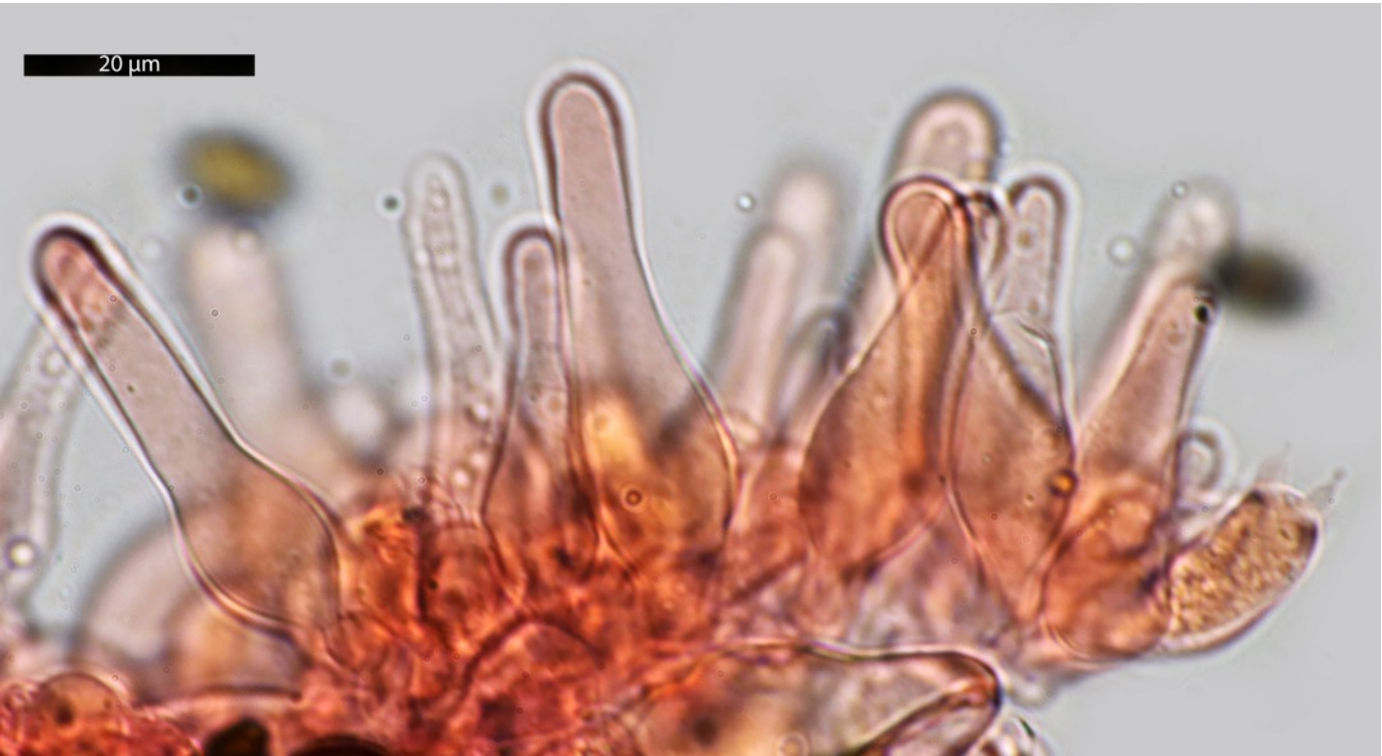
Cheilocystidia in NH₄OH



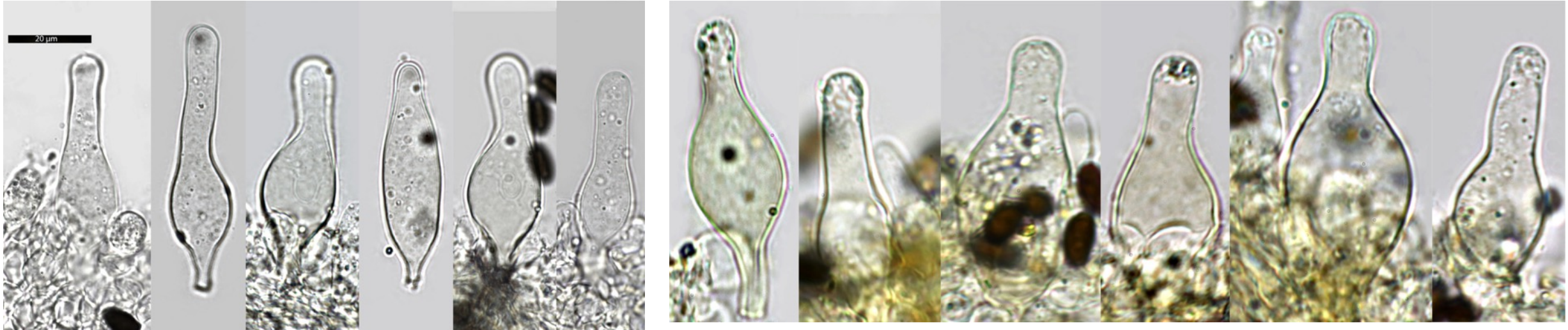
Cheilocystidia in Congo Red. In some of them intracellular granulations are visible at top





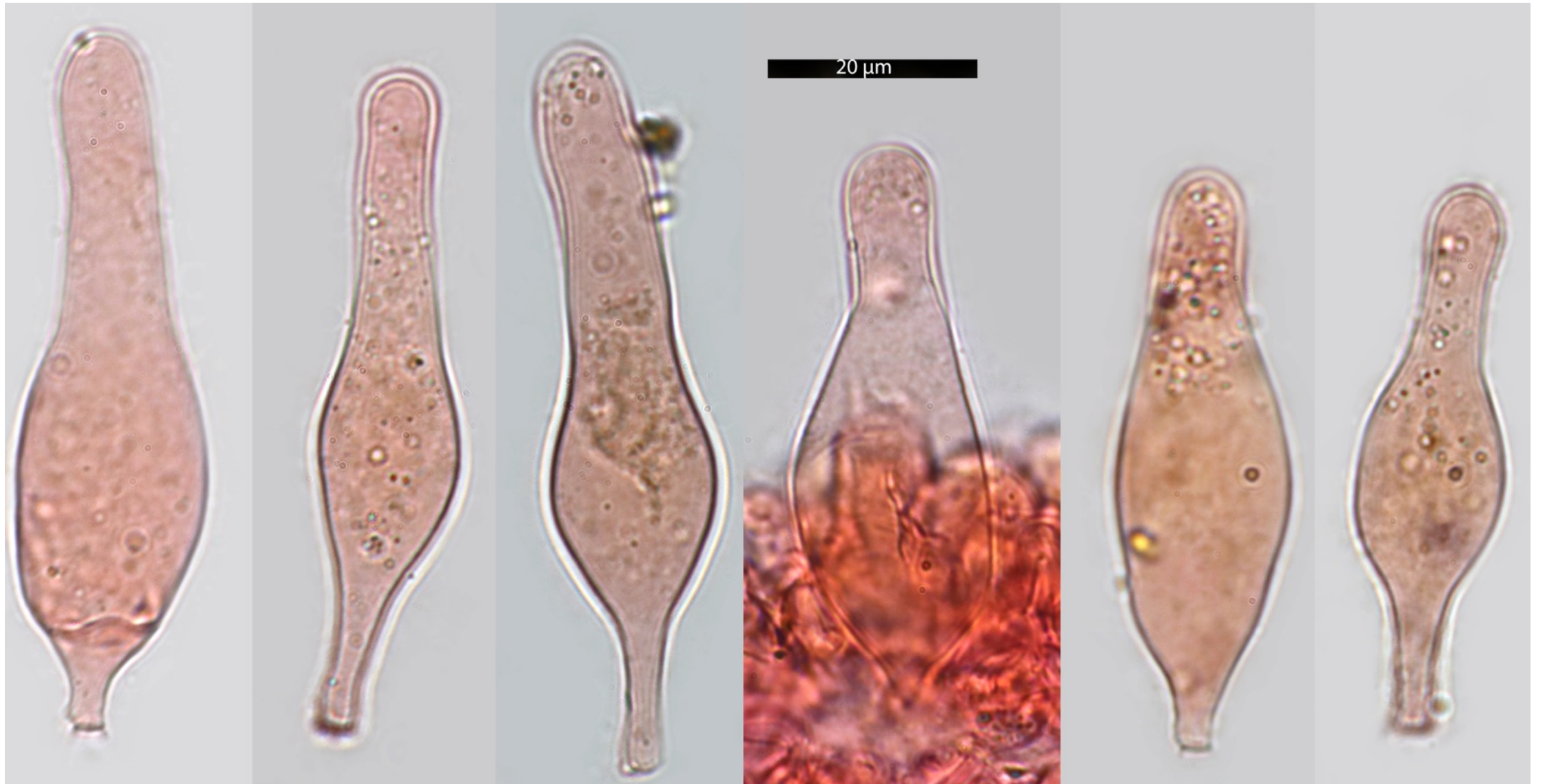


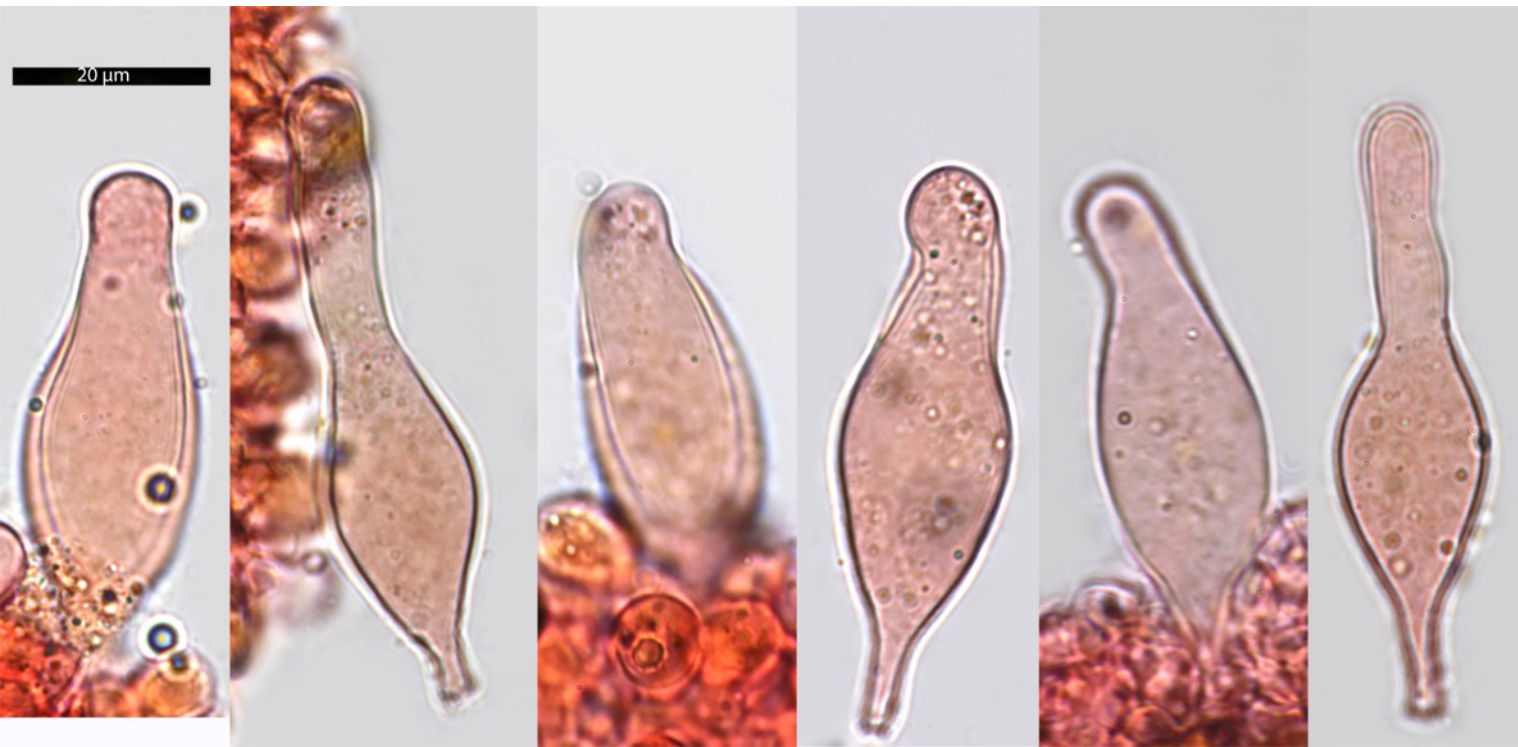
Pleurocystidia : in NH₄OH, numerous, thin-walled, hyaline, similar to cheilocystidia but with generally a shorter narrow neck, apex obtuse, rarely forked. A small number of large utriform cystidia are also present. To notice, in ammonia, the typical greenish granulations also seen at top of some pleurocystidia.



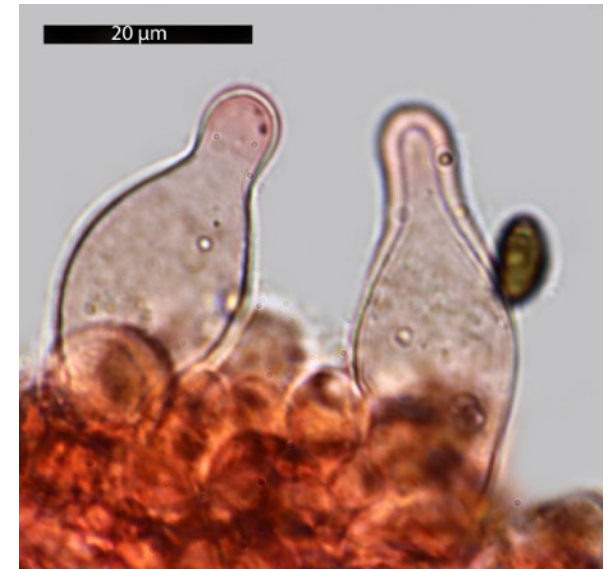
Pleurocystidia measurements : N = 77
(41,1) 46,7 - 60,3 (69,2) × (9,7) 13,4 - 17,3 (18,3) µm
Me = 53,4 × 15,3 µm

Peurocystidia in Congo Red

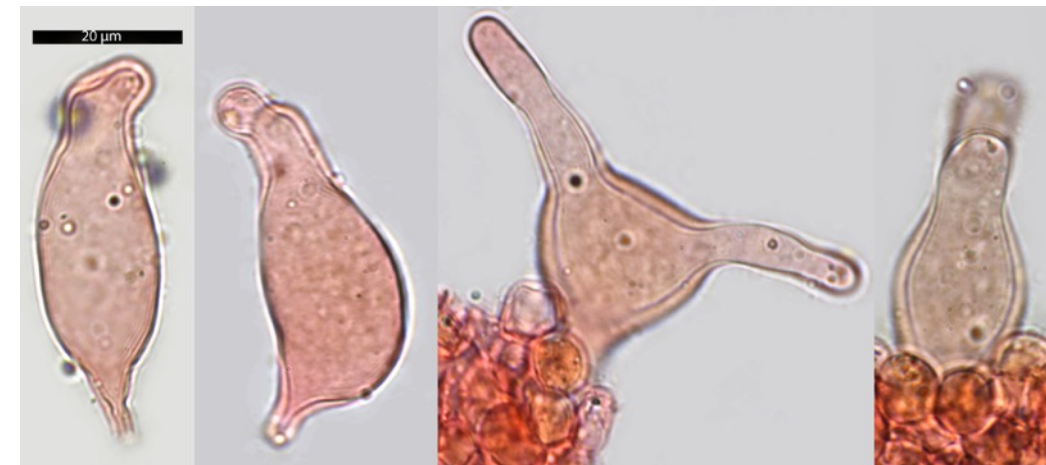
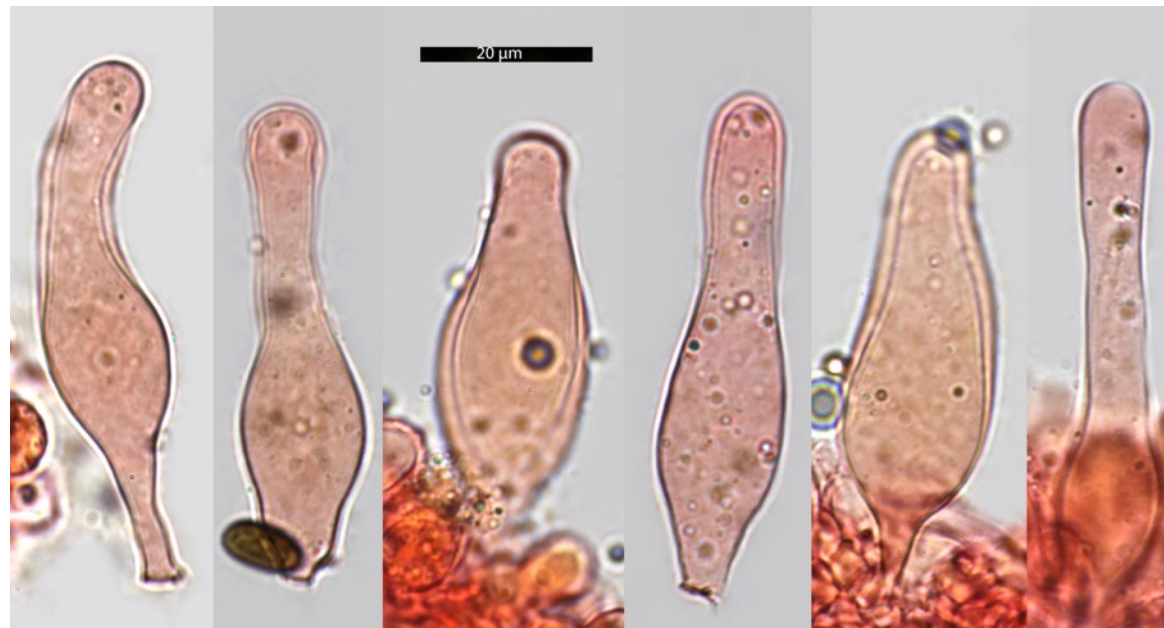




Some utrifiform pleurocystidia



Rarely forked pleurocystidia



Une autre très belle récolte de Philippe Cercley avec la même écologie typique



Photo in situ Philippe Cercley

Jura - Le Fied- Bois des Fortunes – alt. : 545 m – Maille 3226B21

le 03/09/2022, dans un Bois d' *Epicea* avec quelques feuillus mêlés (*Charme, Chêne, Noisetier, Hêtre*), dans une allée pleine d'eau , dans la boue.



Photo in situ Philippe Cercley



Photo in situ Philippe Cercley