

Psathyrella fagetophylla - Illustration de récoltes complémentaires
Deschuyteneer Daniel

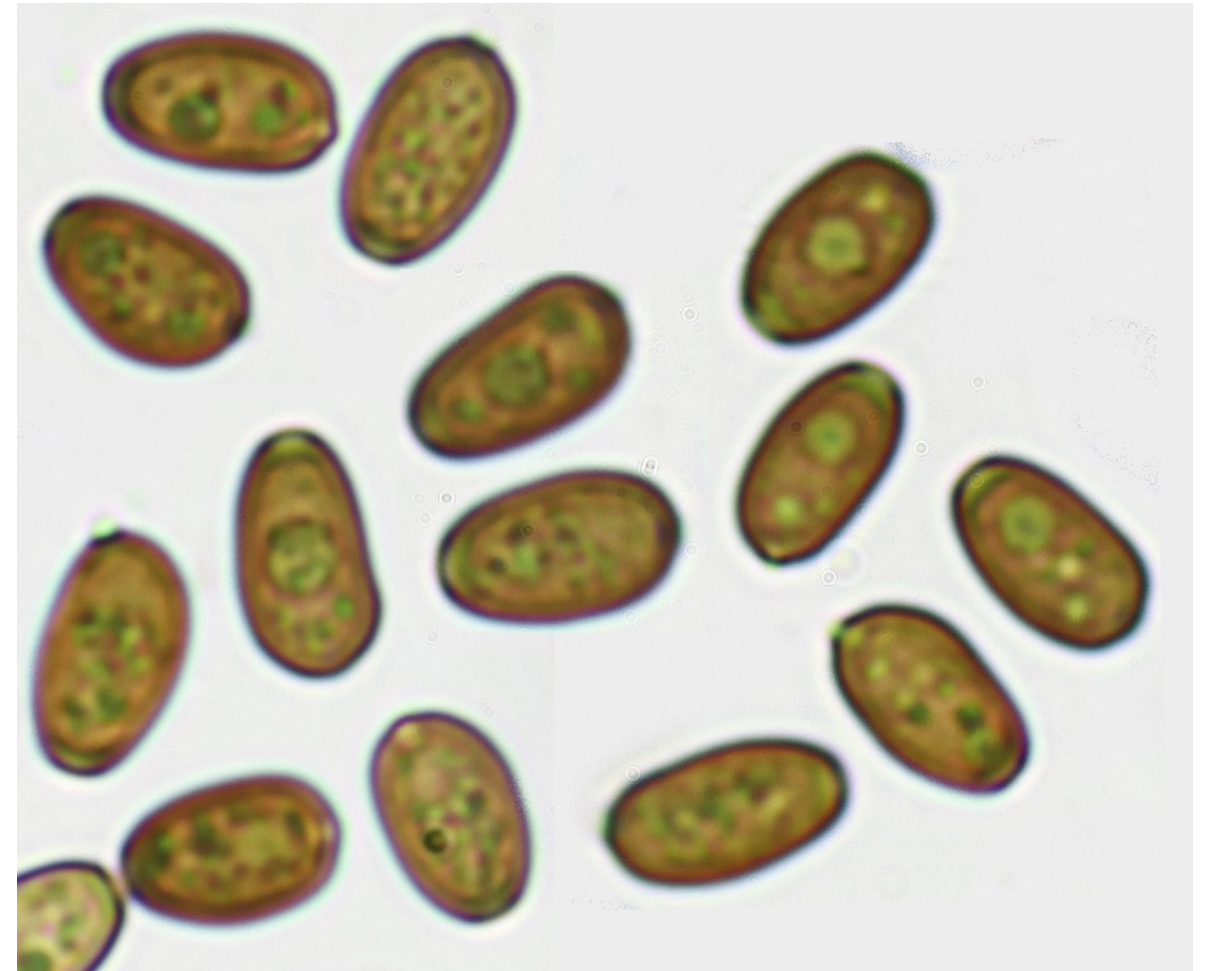


Photo in situ : Bruno de Ruvo. - 09/05/2021 - along the banks of the Rio Arno stream, on piles of beech leaves in a very humid place. (Rio Arno di Pietracamela (TE)) ; $42^{\circ}30'32.49''\text{N}$ $13^{\circ}32'38.71''\text{E}$

Pietracamela (locally La Pròtë) : a town and comune in Teramo province in the Abruzzo region of eastern Italy.

Spores : smooth, light brown, not opaque, ellipsoid and oblong in face view, assymetric and slightly phaseoliform in profile, germ pore central, dictinct

Scale bar : 10 μm

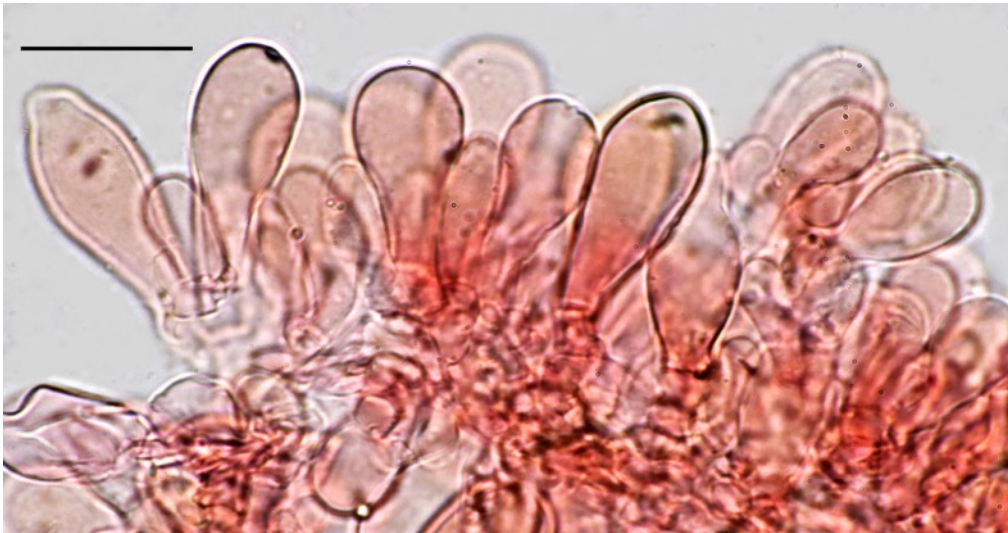
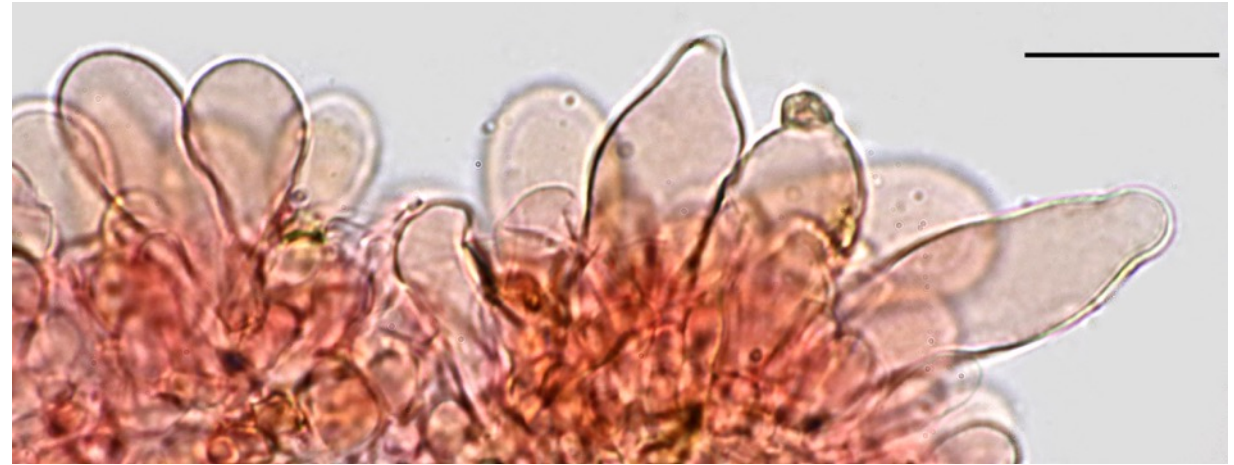
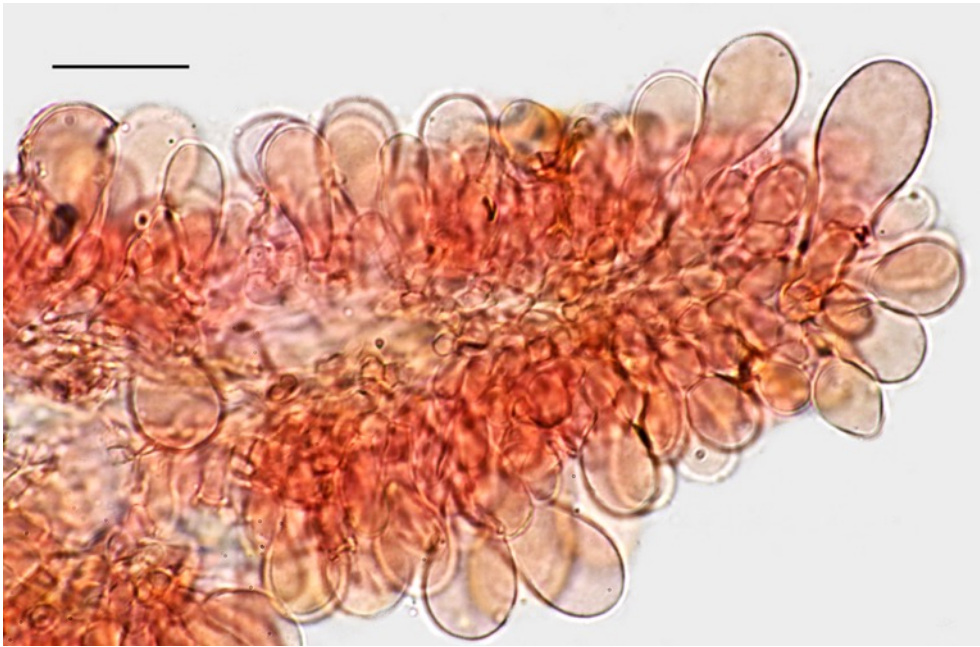


N = 60

(7,1) 7,5 - 8,8 (9,4) \times (4,1) 4,4 - 5 (5,5) μm ; Me = 8,1 \times 4,6 μm

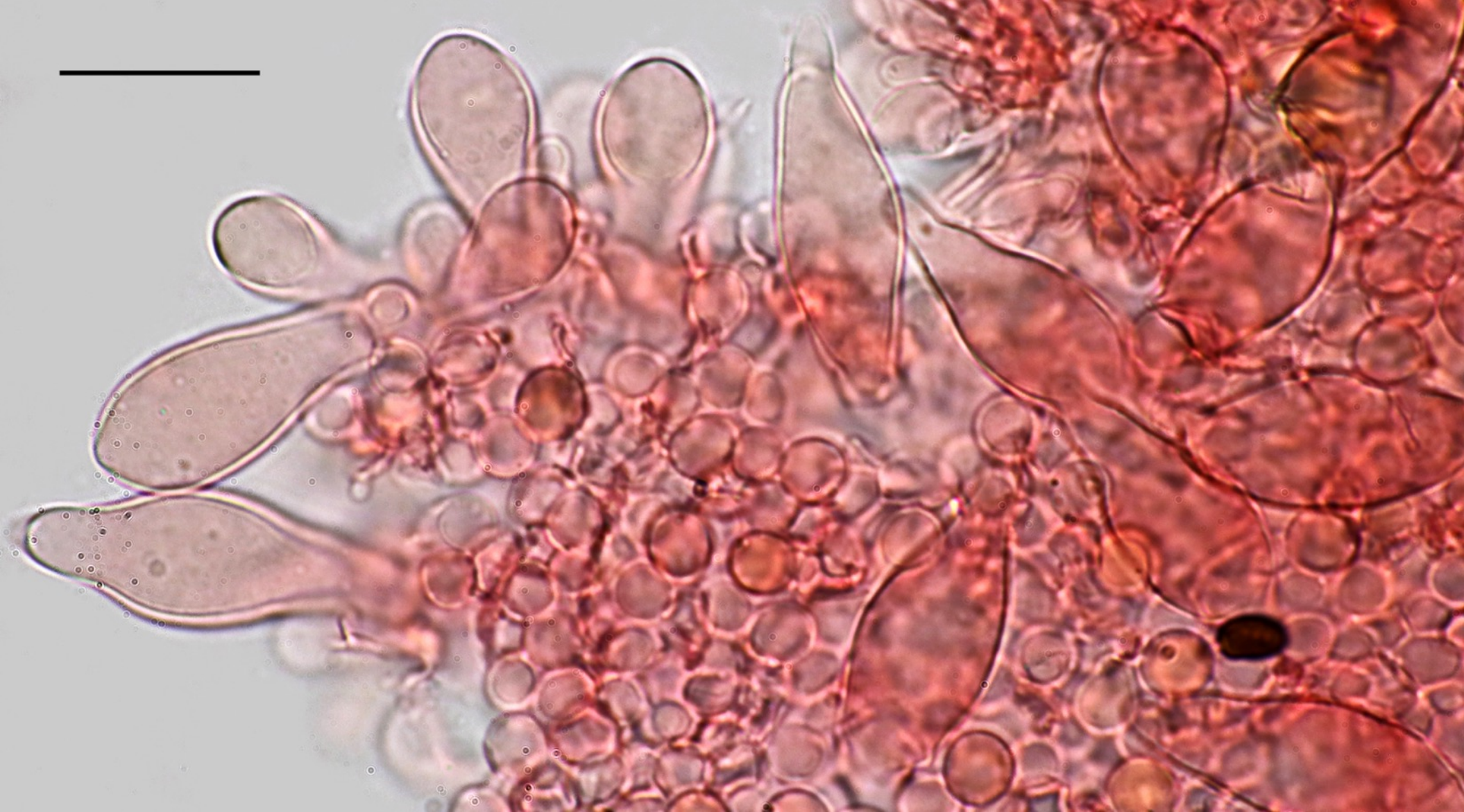
Q = (1,5) 1,6 - 1,9 (2,1) ; ; Qe = 1,8

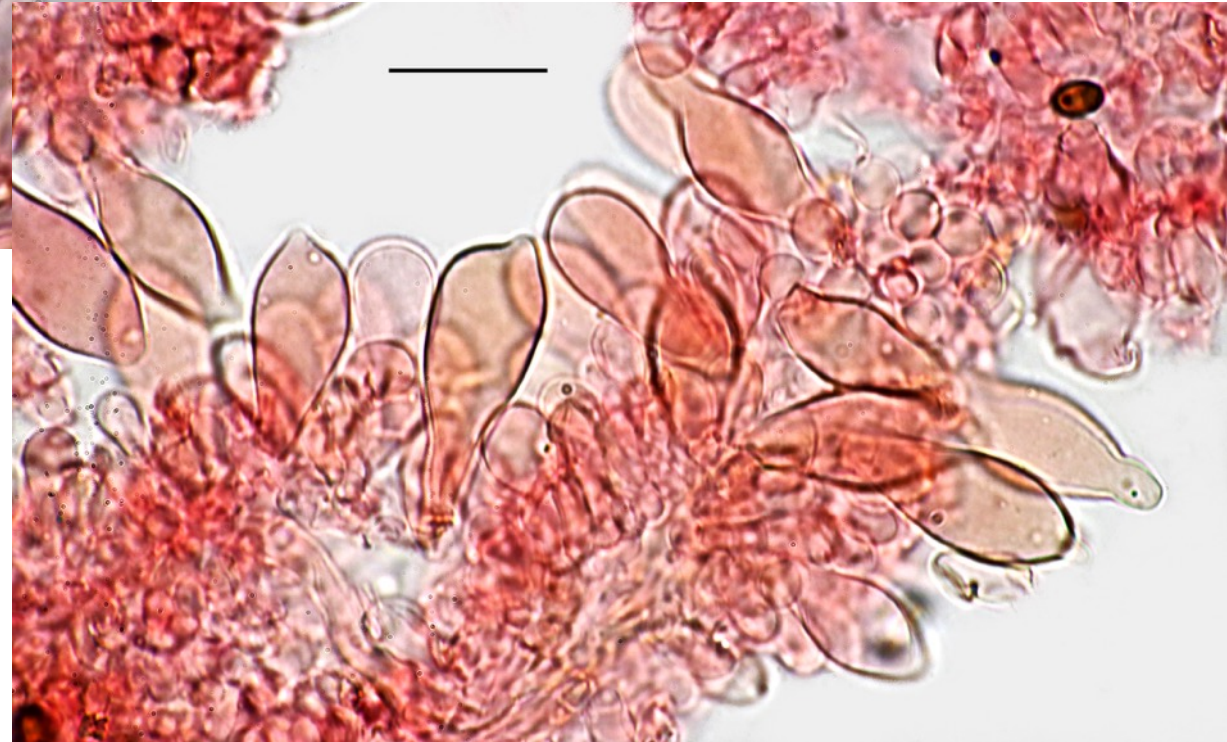
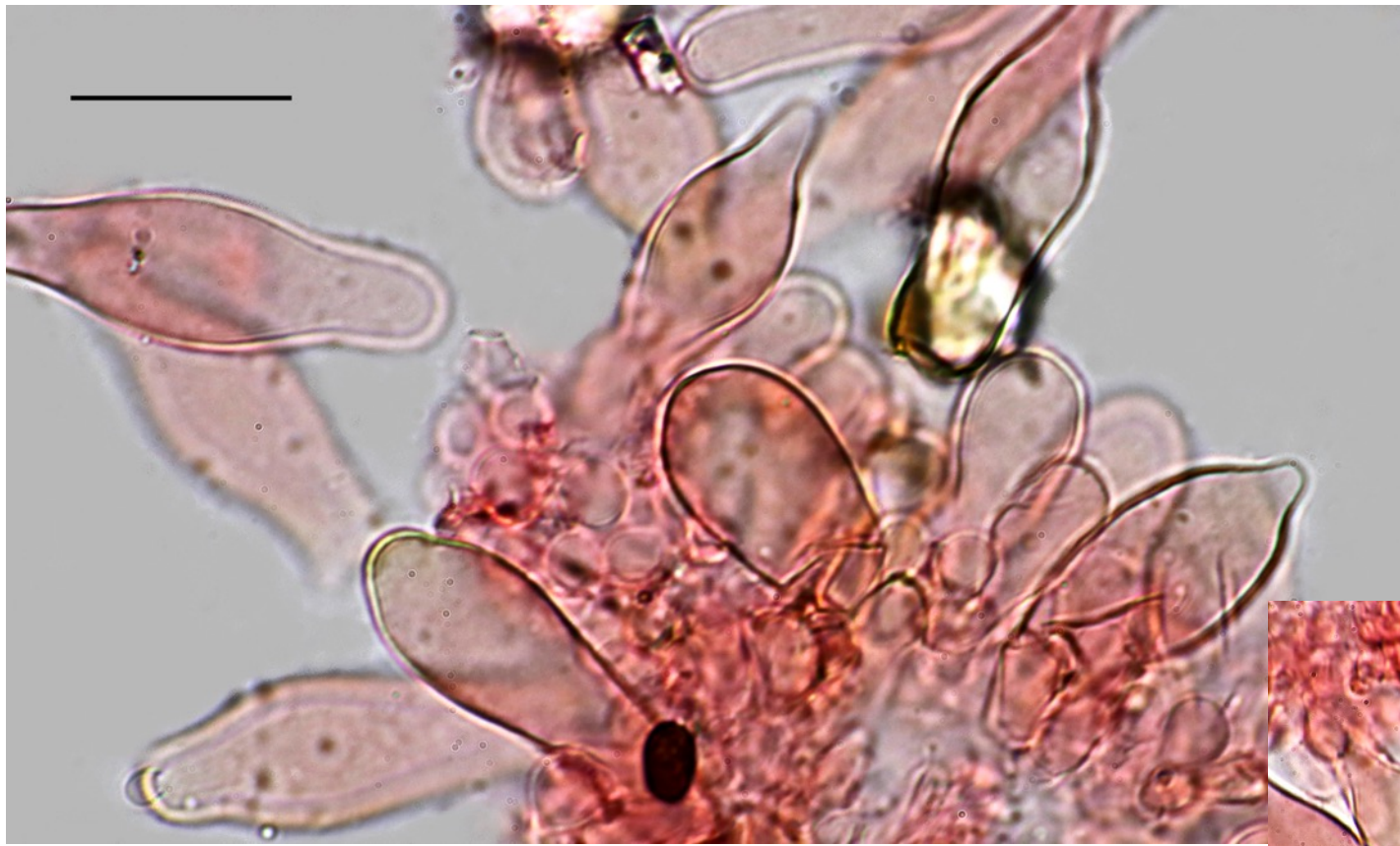
Near the cap margin the clavate paracystidia are very numerous and the cheilocystidia sparse.
Scale bar : 20 μm

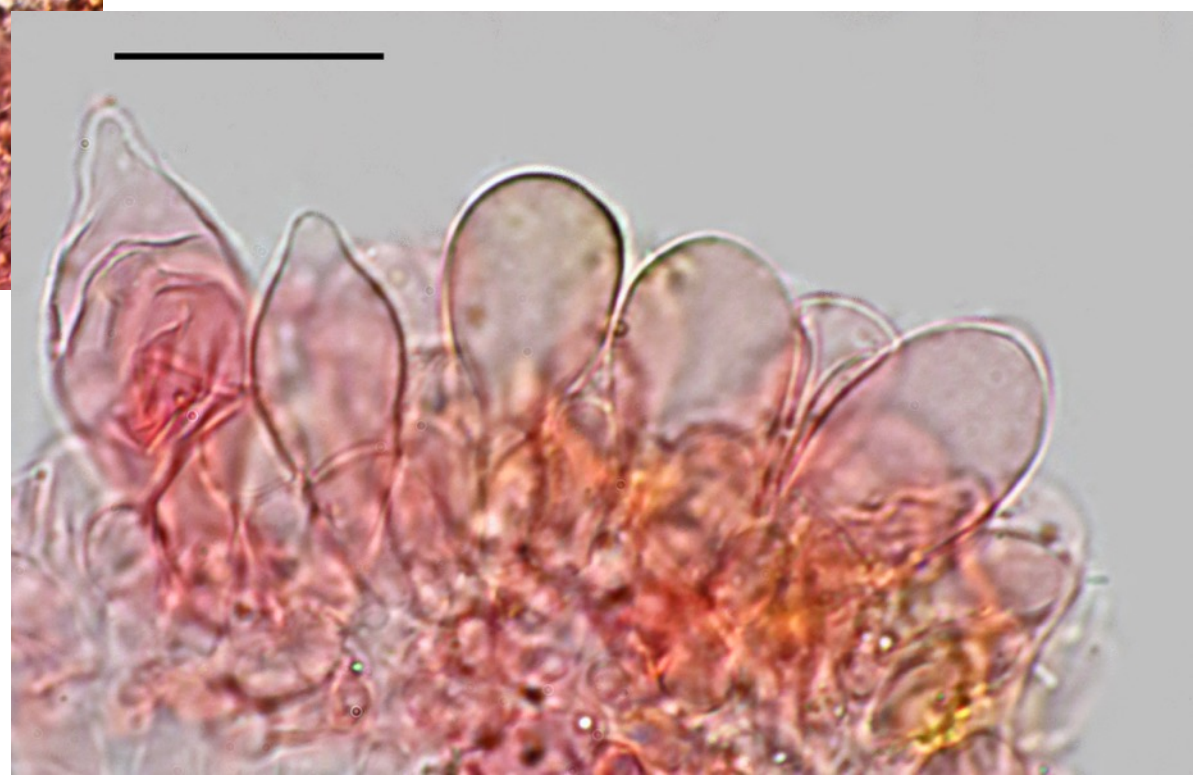
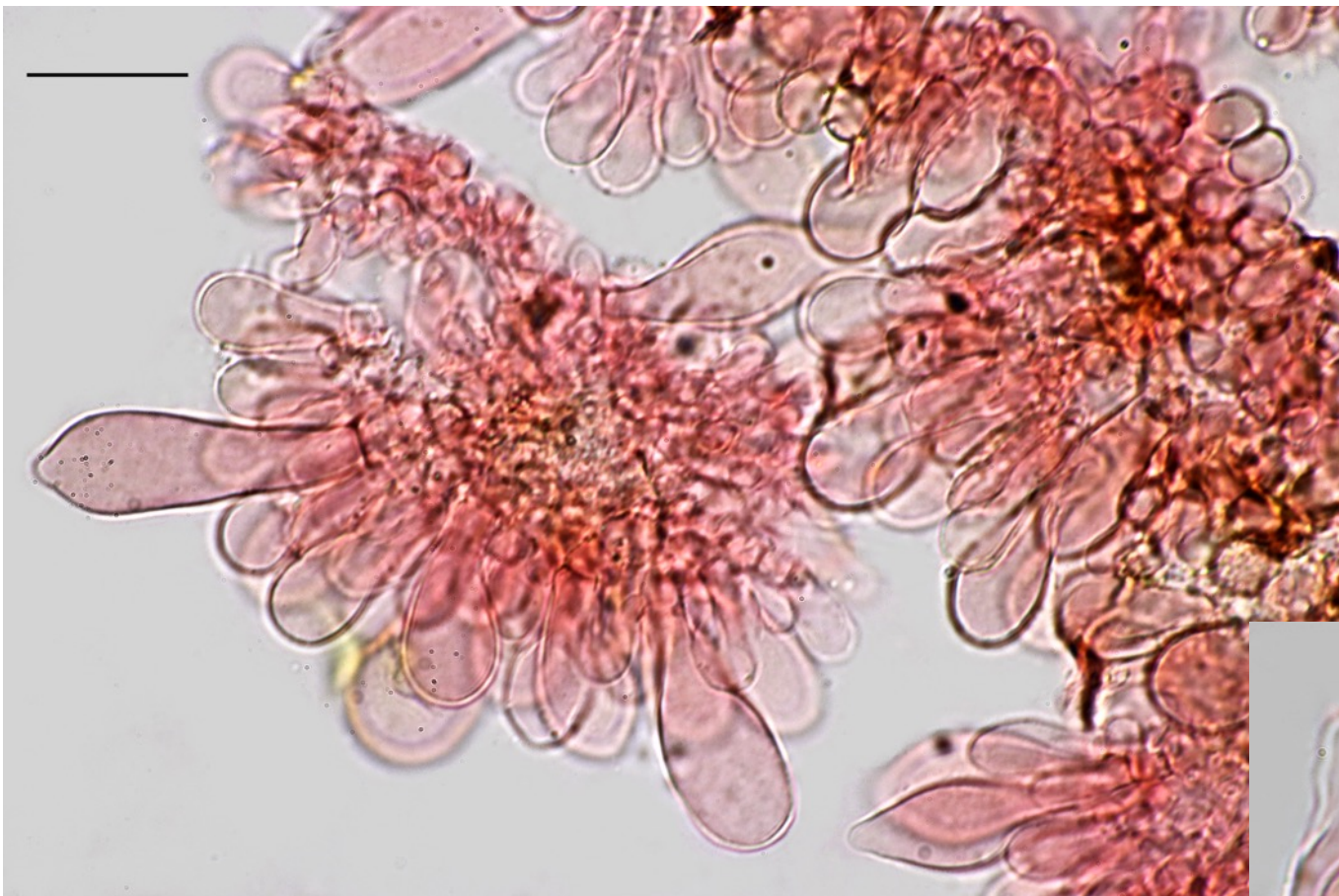


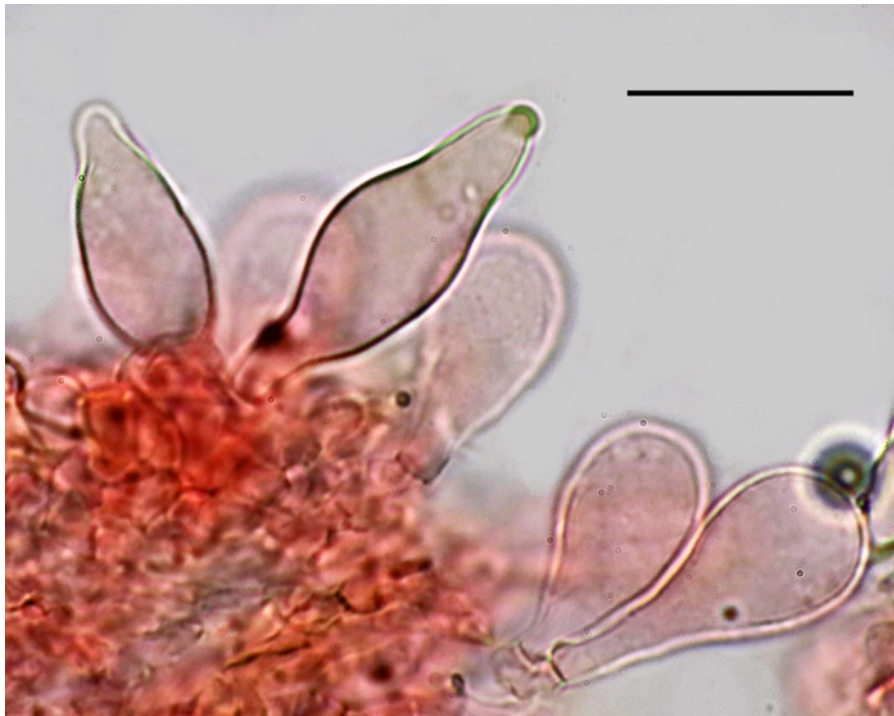
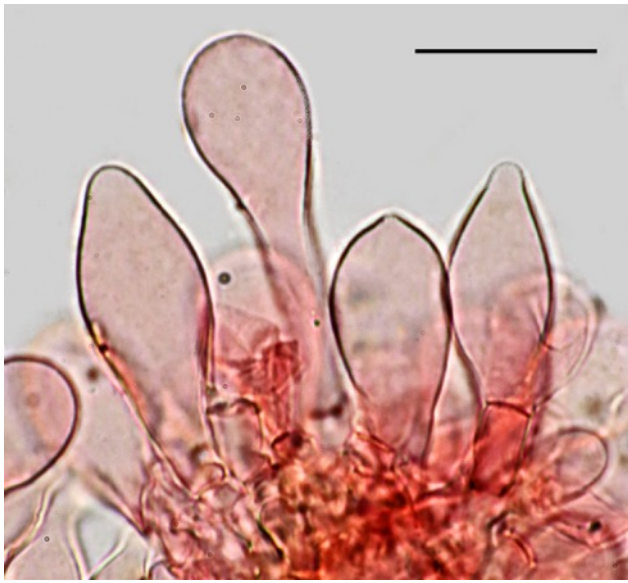
At a distance from the cap the cheilocystidia are abundant, always mixed with numerous paracystidia, hyaline or sometimes coloured and thick-walled, lageniform, sublageniform, clavate, with obtuse or often rostrate or tapering mucronate apex.

Scale bar : 20 μm

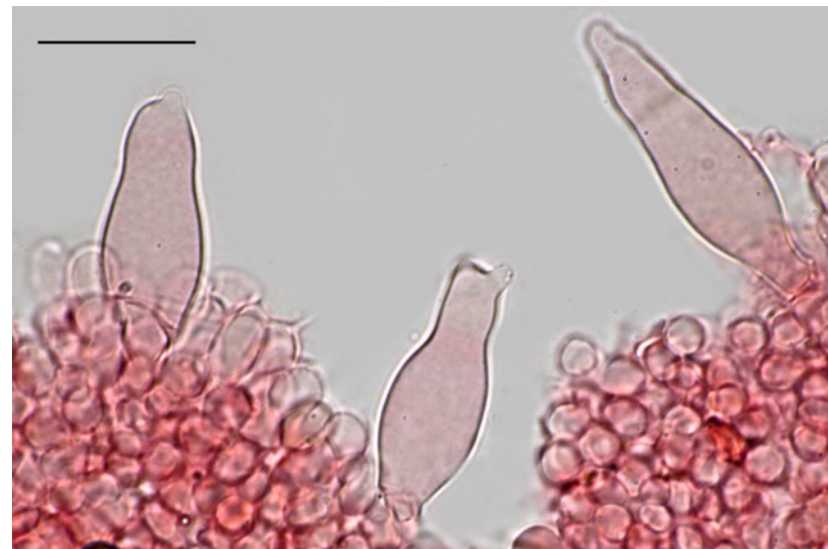
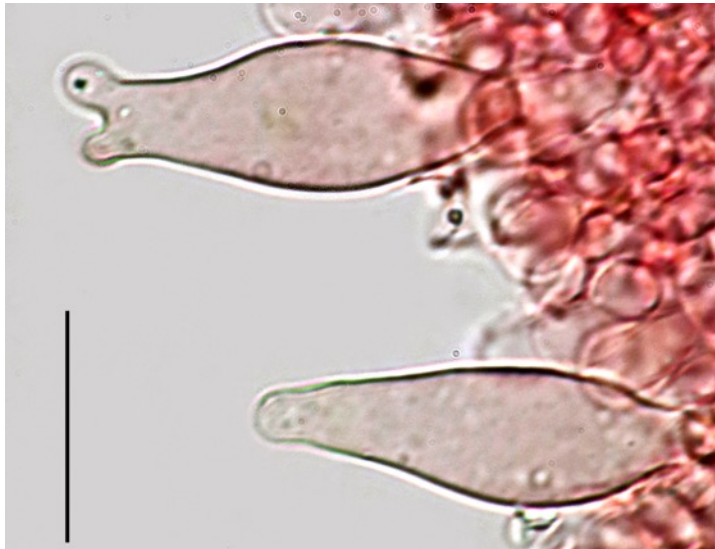






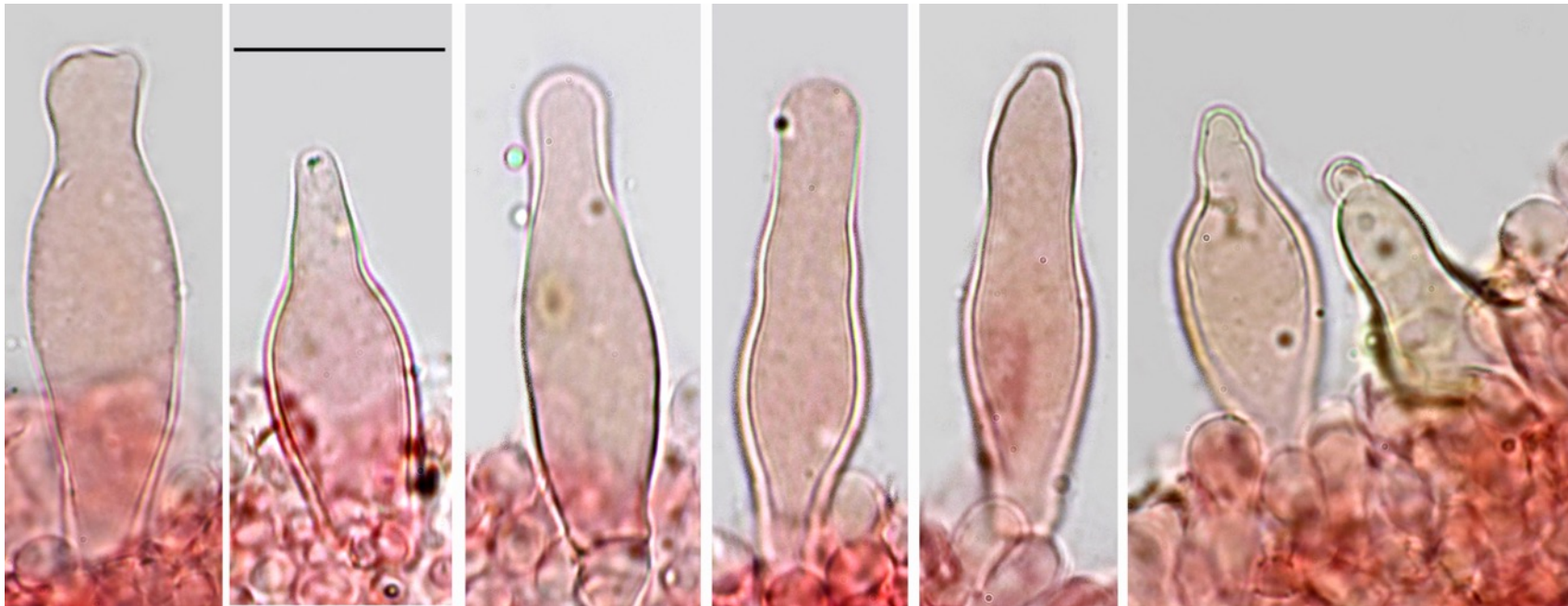


Pleurocystidia numerous, hyaline but sometimes coloured and thick-walled, lageniform, sub-lageniform, with an obtuse or often a tapering mucronate or rostrate apex. Scale bar : 20 μ m

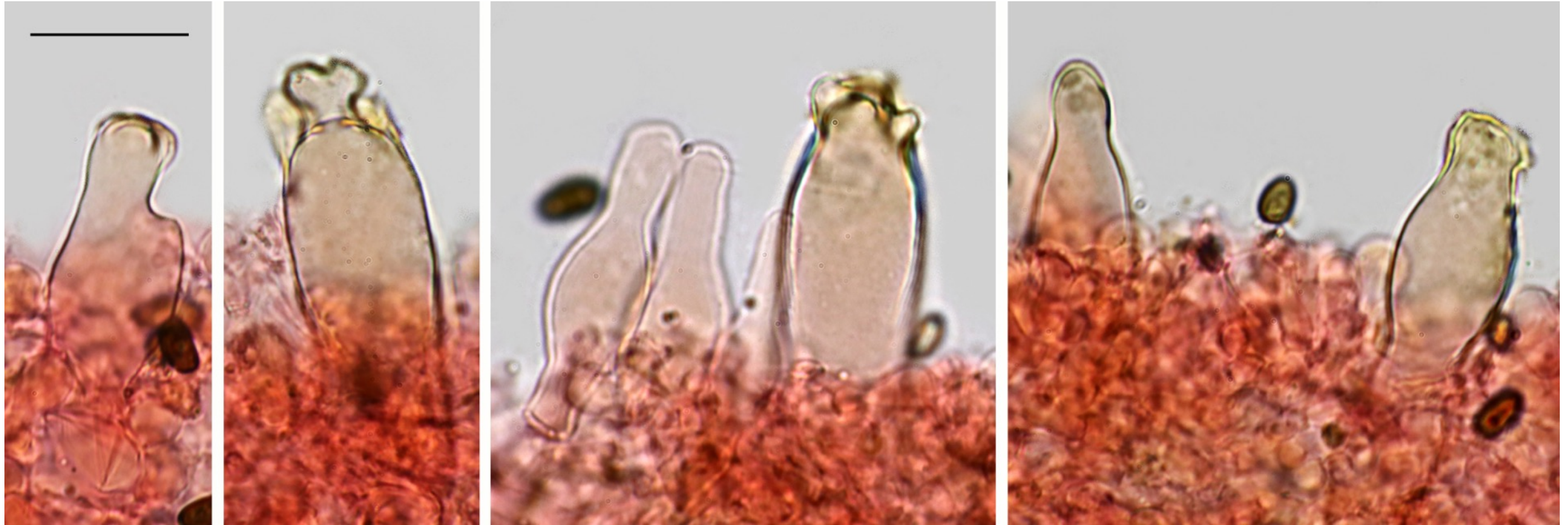




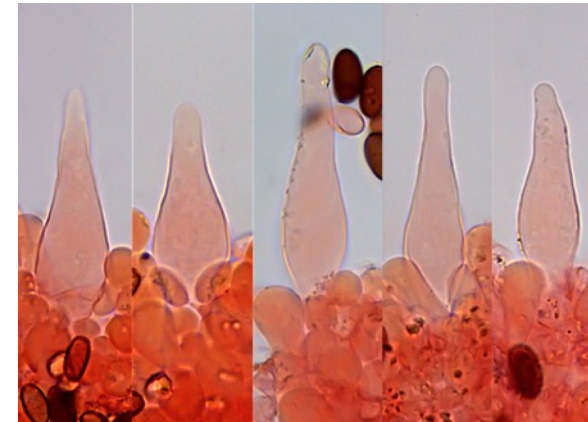
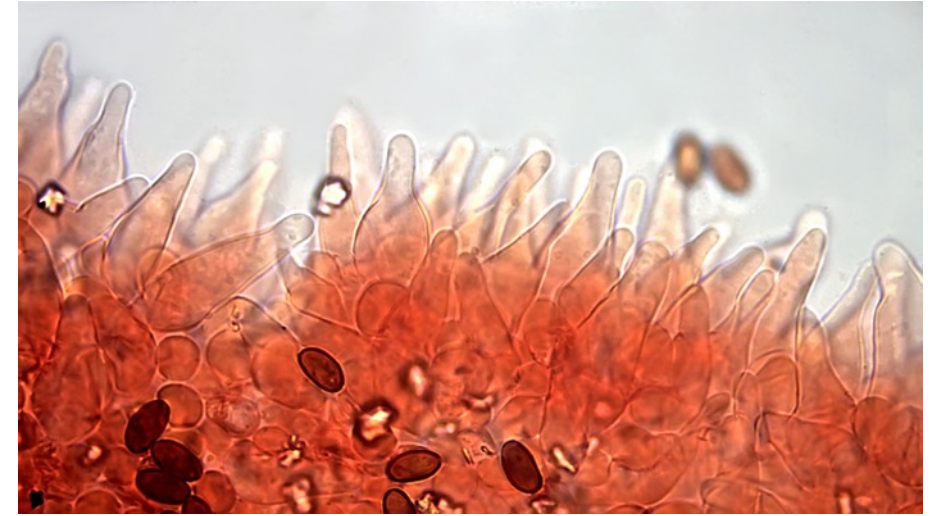
Pleurocystidia
Scale bar: 20 μm



Thick walled, coloured, rostrate pleurocystidia. Scale bar : 20 μm



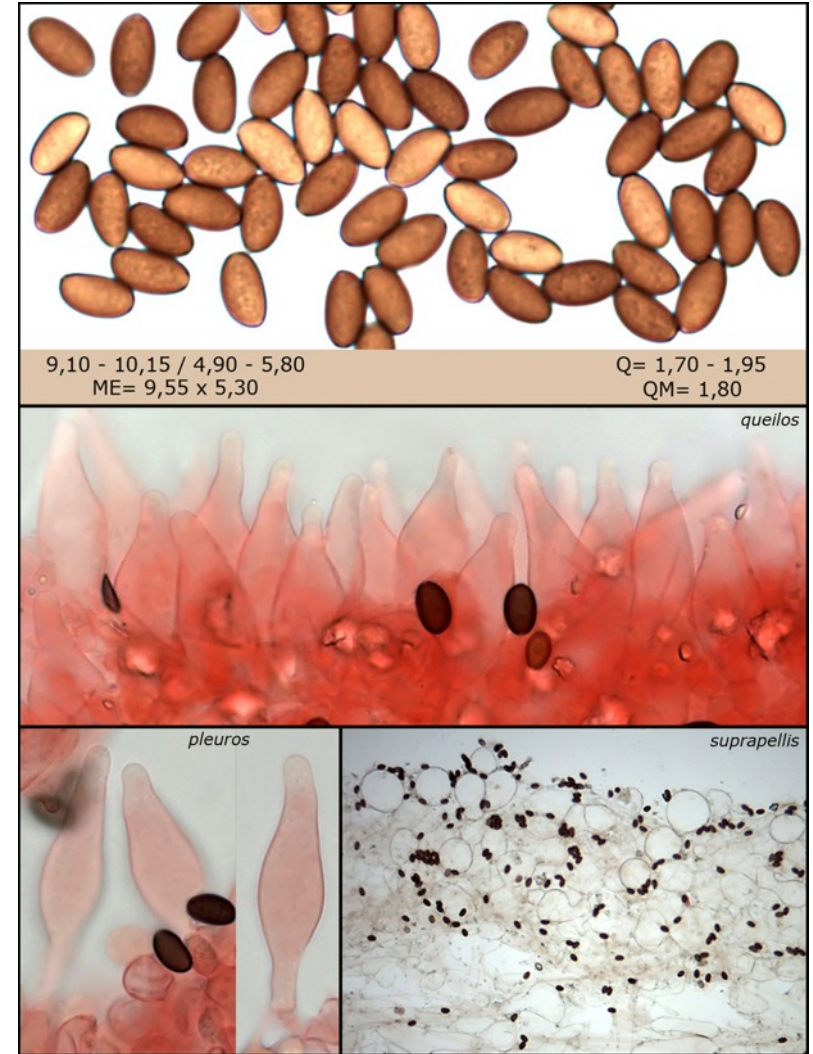
Psathyrella fagetophyla
D. Deschuyteneer & Leandro Sanchez



8,80 - 11,25 / 4,70 - 6,05
ME= 10,15 x 5,50

Q= 1,60 - 2,20
QM= 1,85

Voucher 1445 – Photo in situ & micro from Leandro Sanchez

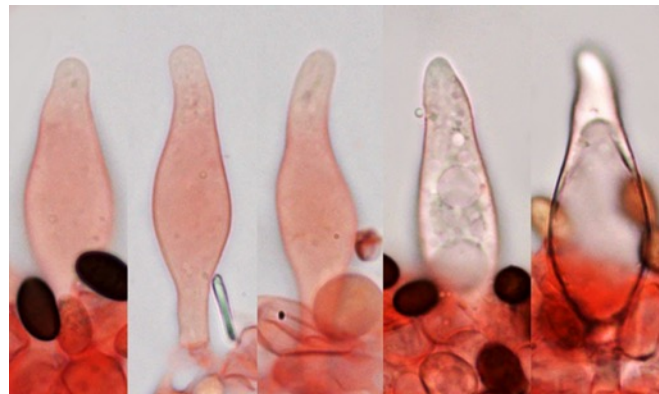


Voucher 3412

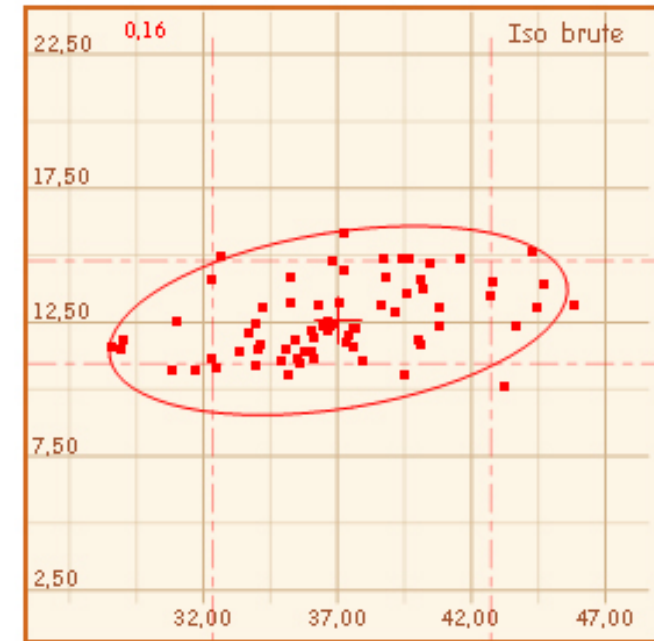
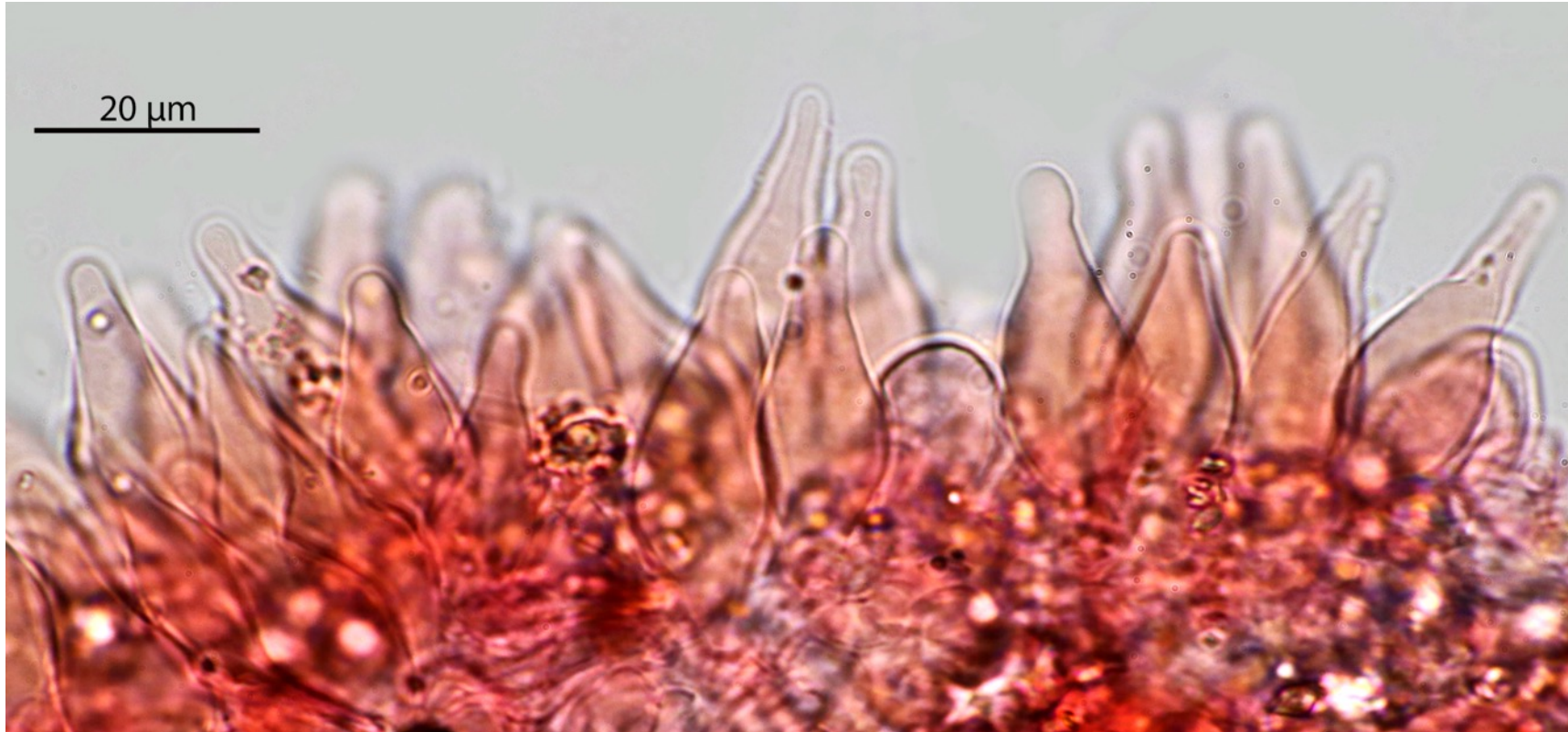
Sous *Fagus sylvatica*

Diamètre jusque 52 mm

Photo in situ & micro Leandro Sanchez

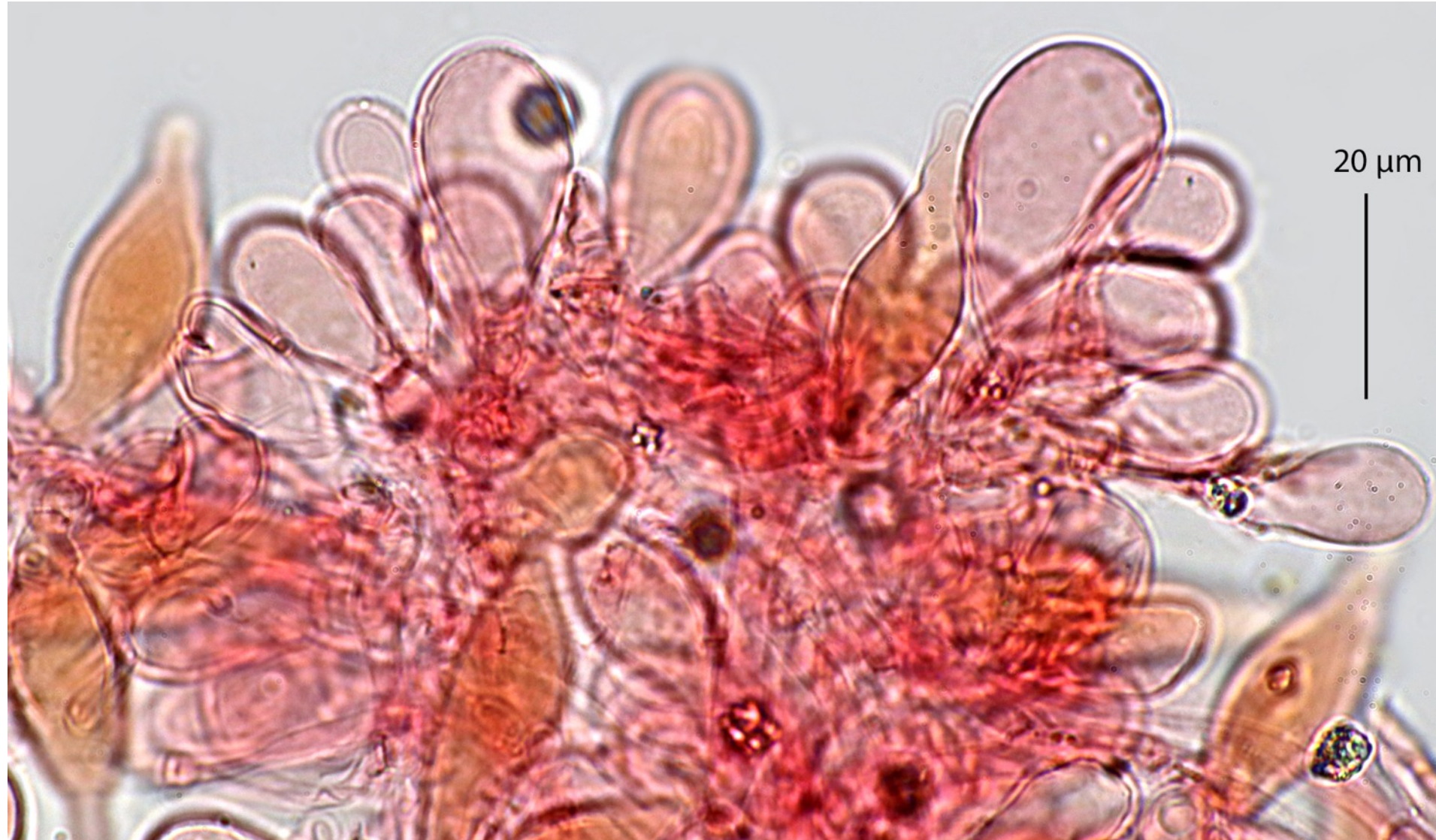


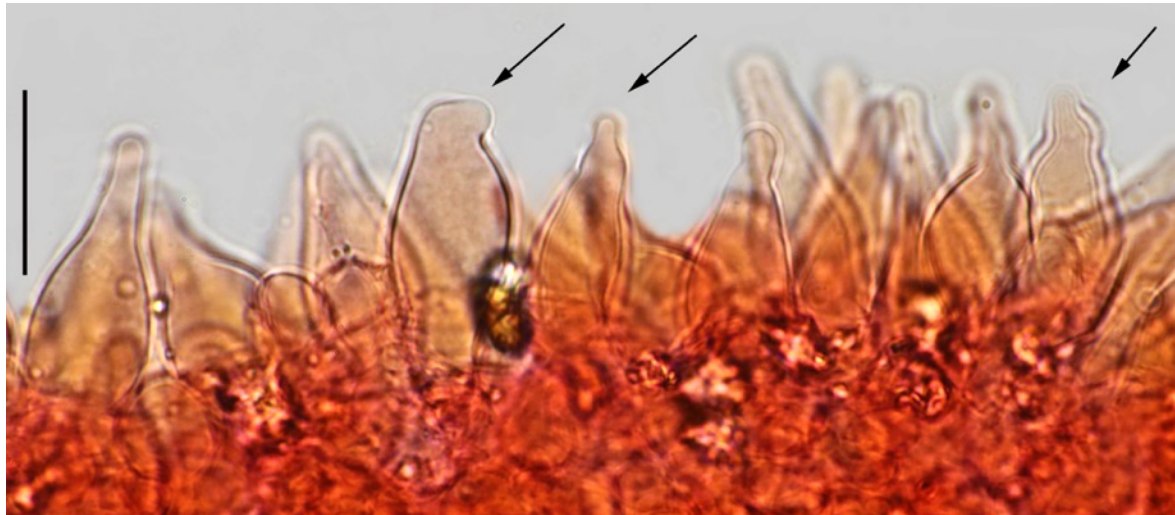
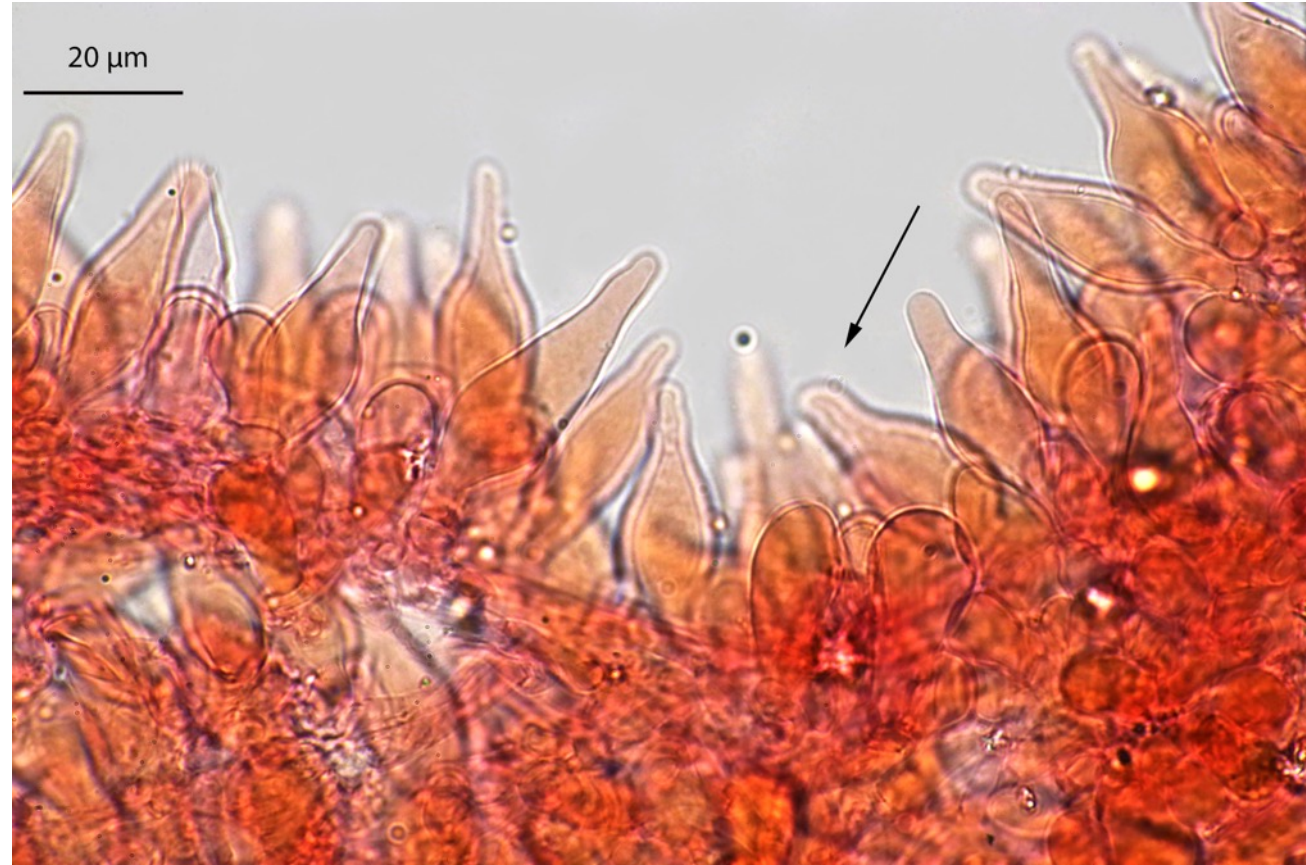
Voucher 3412 – Micro D. Deschuyteneer



Cheilocystides mesurant (N= 70) : (28,6) 32,3 - 42,7 (45,8) × (10,1) 11 - 14,8 (15,8) µm ; Me = 37 × 12,6 µm ; denses, à paroi mince, fusiformes et lagéniformes, à sommet obtus, subaigu ou mucroné (caractéristique).

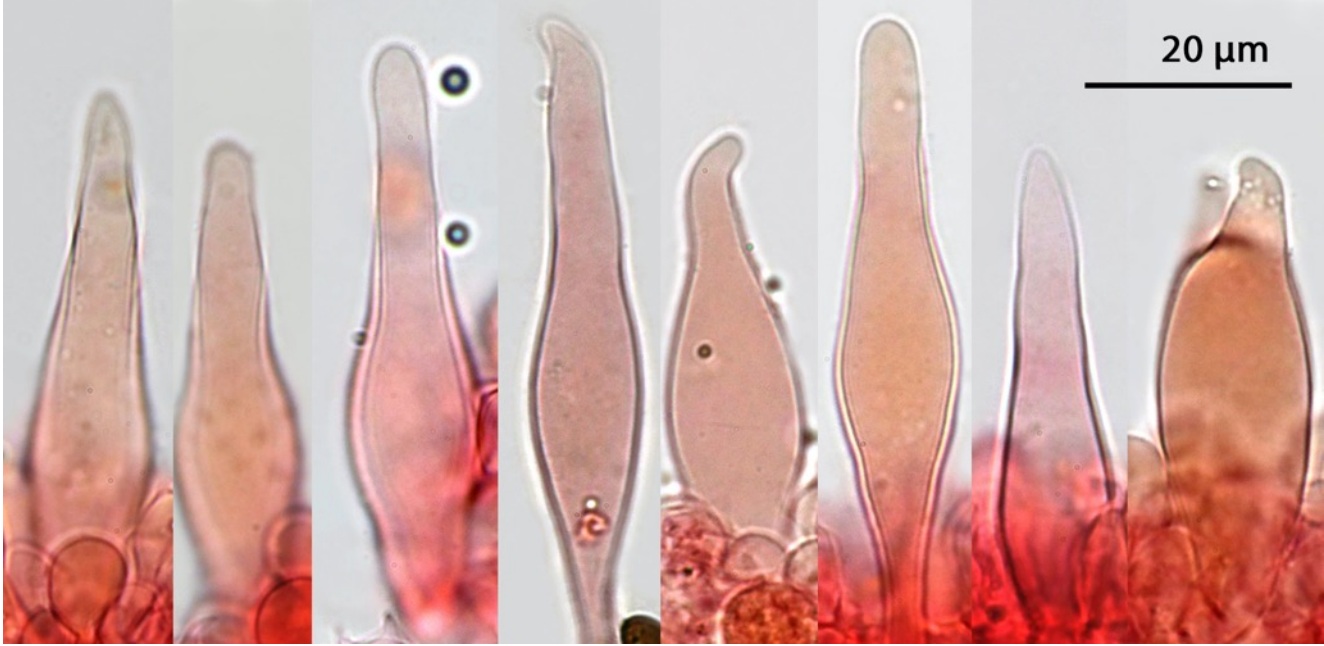
A proximité de la marge les paracystides clavées à paroi fine sont assez nombreuses



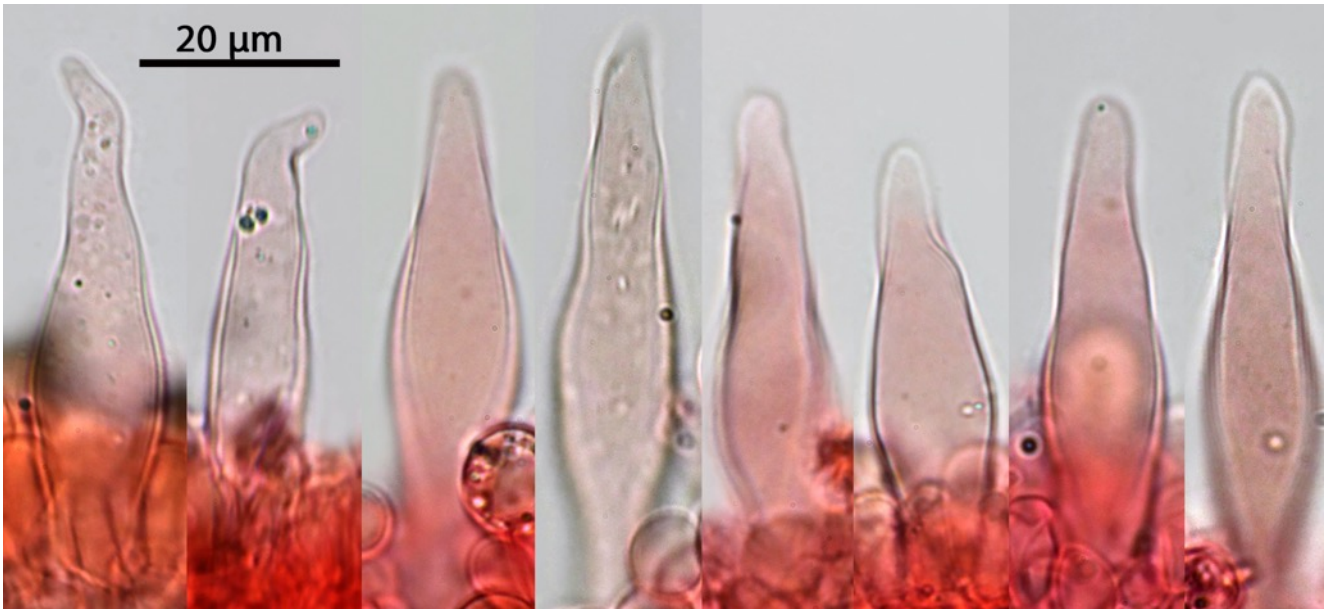
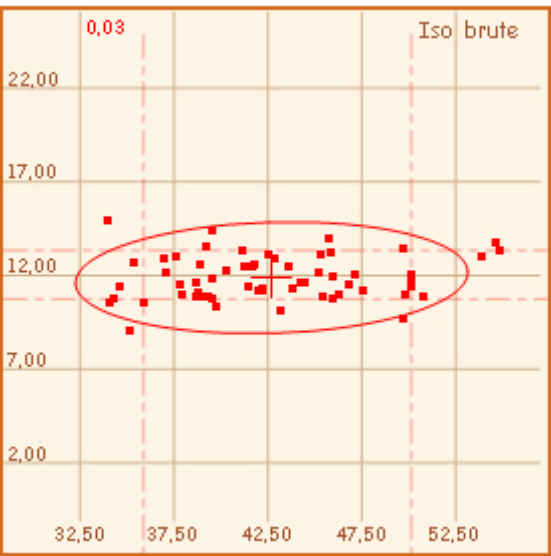




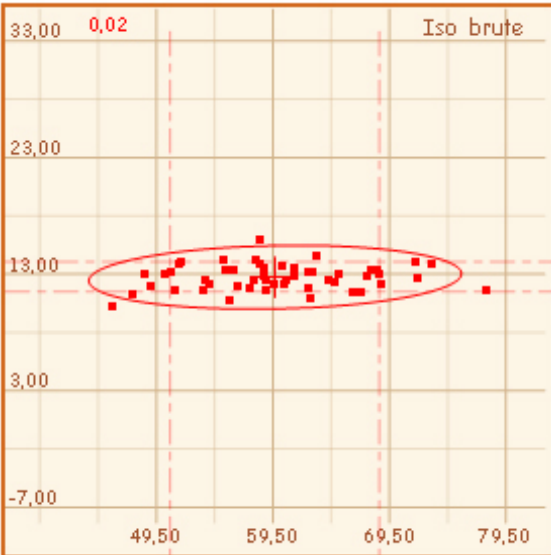
Pleurocystidia (45,8) 50,7 - 68,6 (77,8) × (10,2) 11,5 - 14,1 (15,9) μm; Me = 59,7 × 12,7 μm; thinwalled, numerous, pedicellate, fusiform and lageniform, with a narrow, sometimes sinuous neck, apex **subacute** to obtuse, **often rostrate**, rarely forked



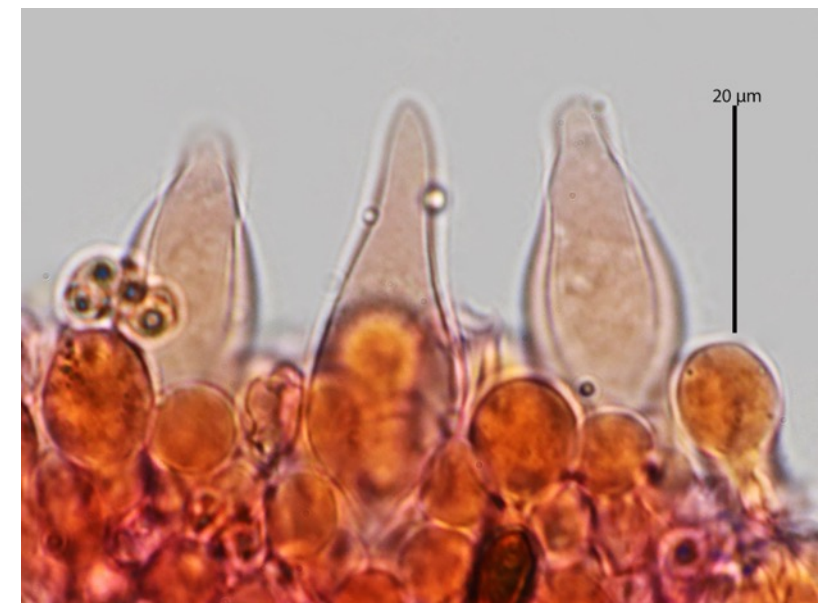
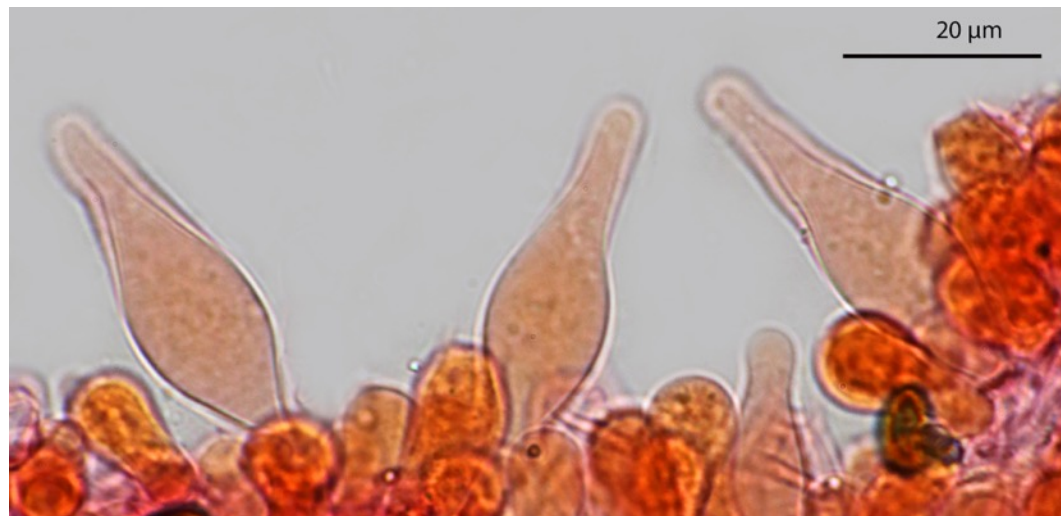
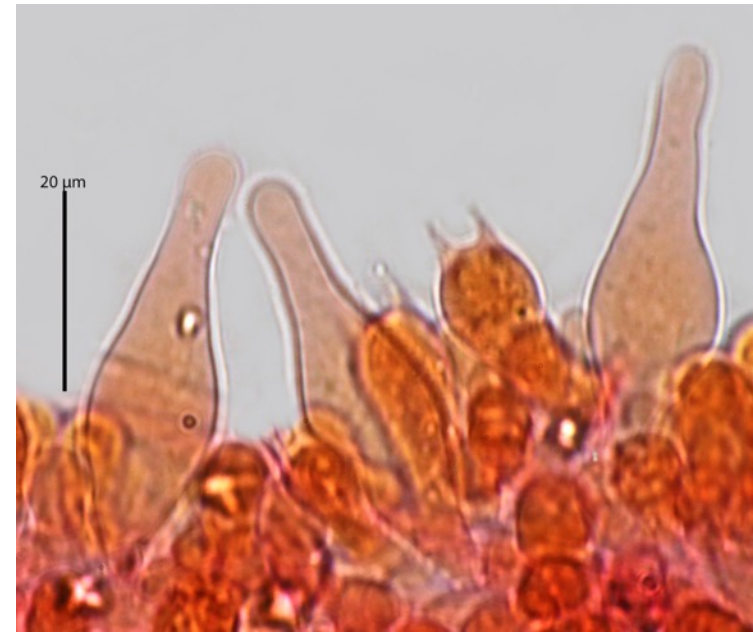
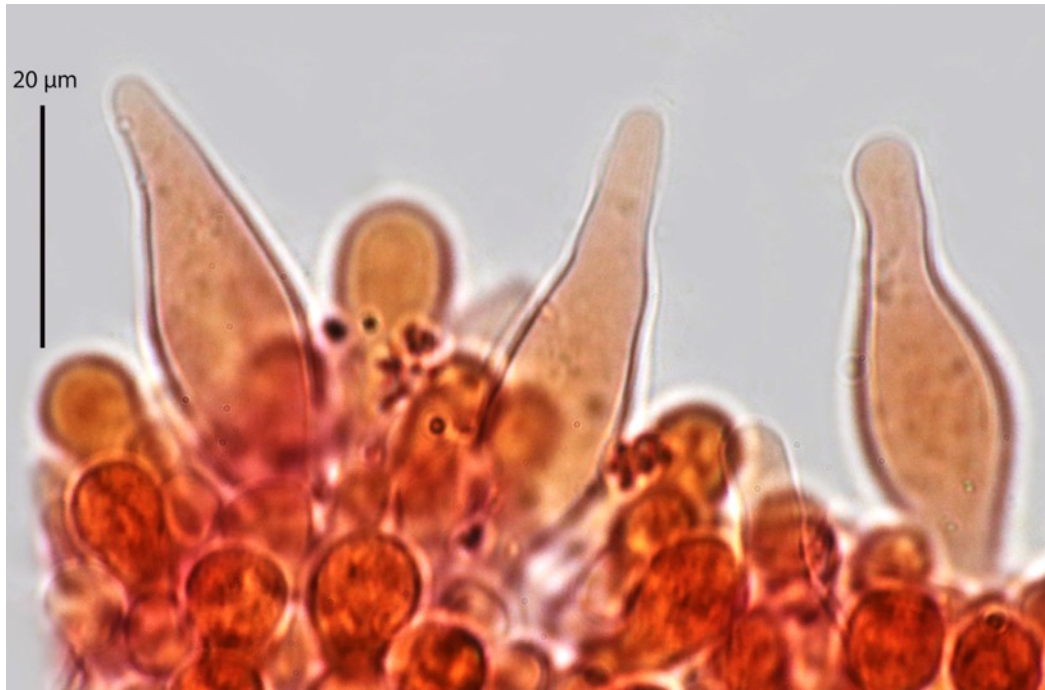
Cheilocystidia diagram



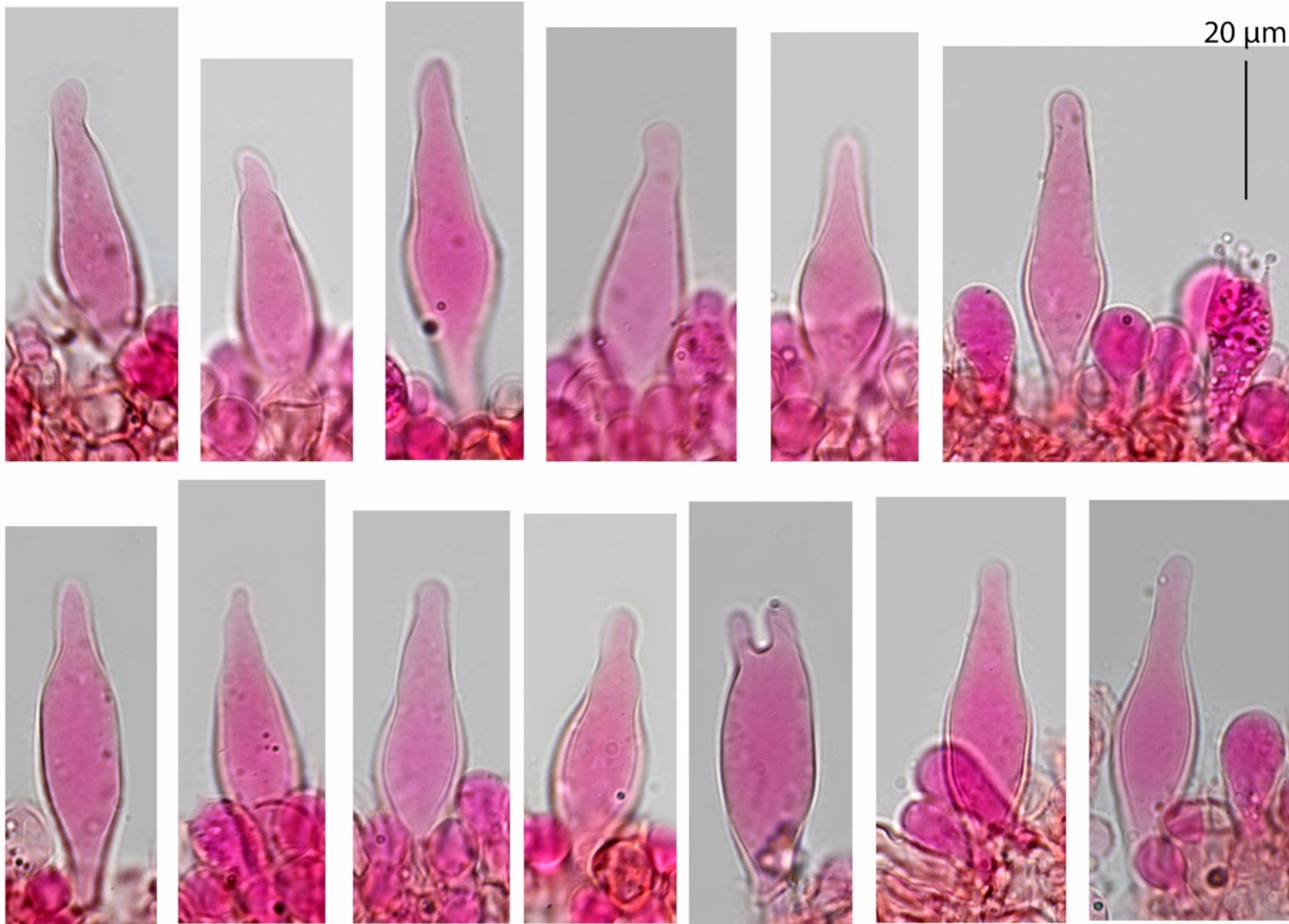
Pleurocystidia diagram



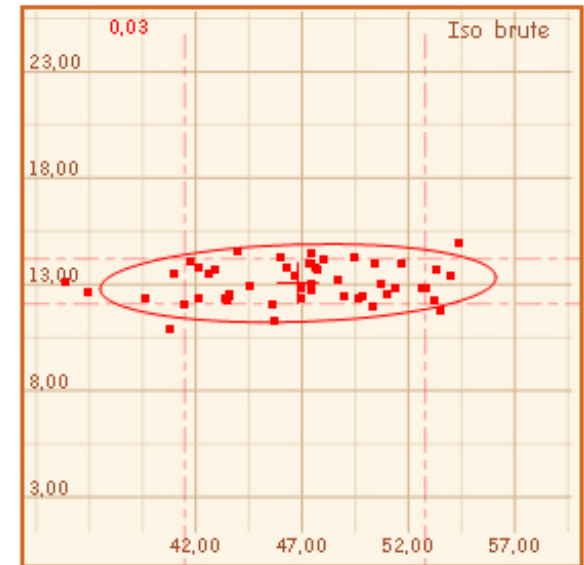
Pleurocystides mesurant (N = 50) : (35,8) 41,5 - 52,8 (54,4) × (10,9) 12,1 - 14,2 (14,9) μm ; Me = 46,8 × 13,1 μm ;
très nombreuses, à paroi mince, fusilagéniformes et lagéniformes, à sommet obtus, subaigu ou mucroné (caractéristique), peu souvent fourchues



Pleurocystides dont certaines sont mucronées.



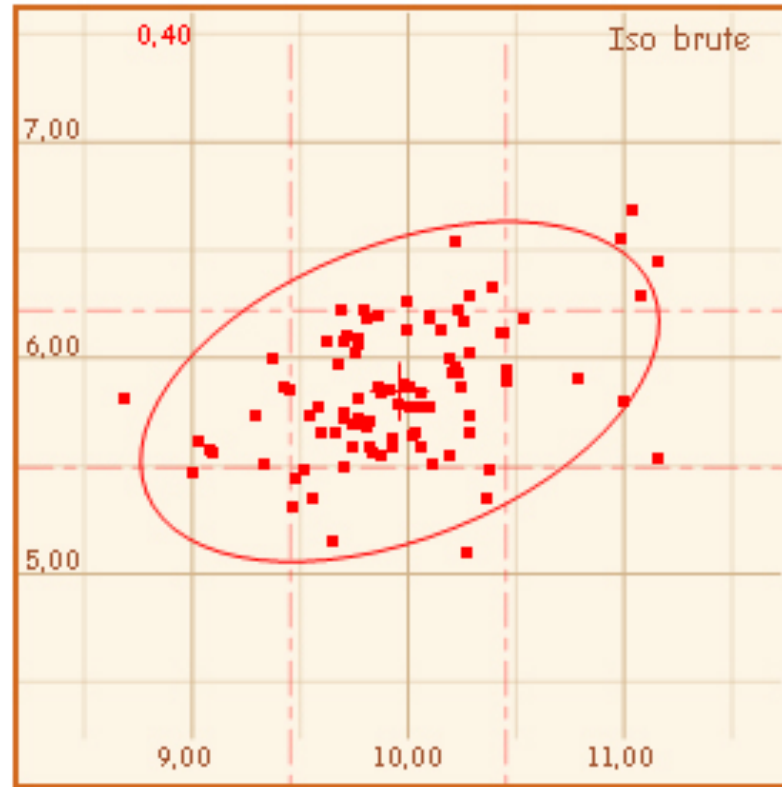
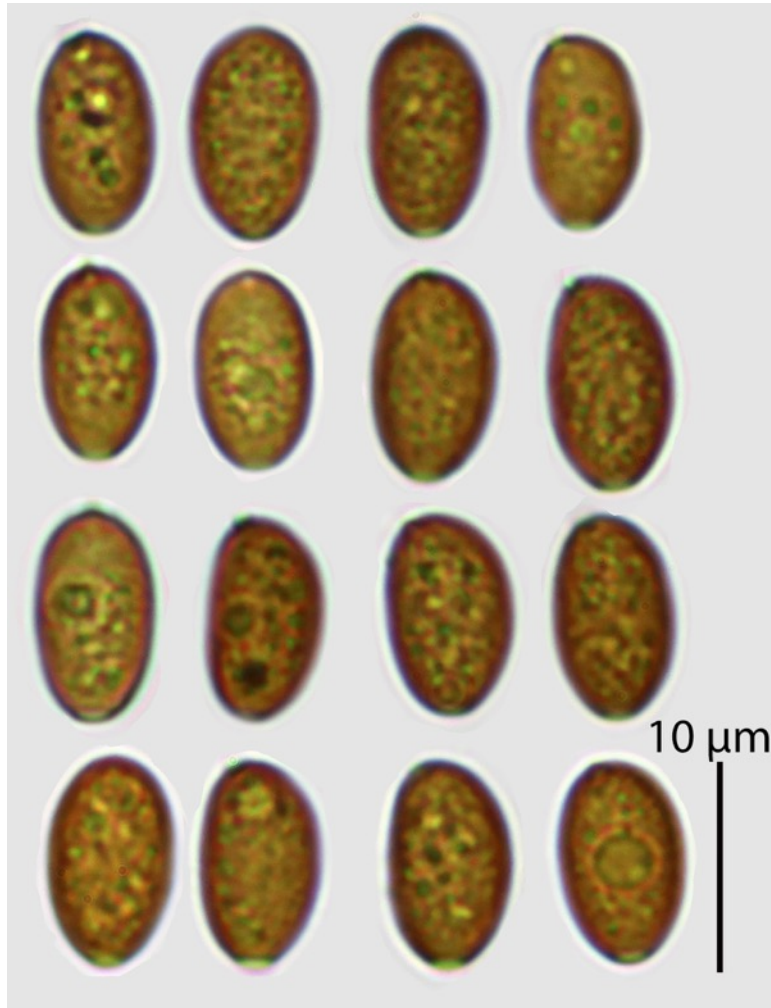
Pleurocystides dimensions



Basides clavées tétrasporiques.

Spores lisses brun clair, non opaques, ellipsoïdes de face, asymétriques et légèrement amygdaliformes de profil, pore germinatif net central.

Boucles présentes à la base des basidioles entre autre.



Spores mesurées avec Piximètre : (N=93)
(8,7) 9,5 - 10,5 (11,2) × (5,1) 5,5 - 6,2 (6,7) µm
Me = 10 × 5,8 µm ;
Q = (1,5) 1,6 - 1,8 (2) ; Qe = 1,7

