

R100831/04 *Russula plumbeobrunnea*
SG Heterophyllidia / S Heterophyllae / Ss Griseinae

EXS R10/027
rev. Felix HAMPE

R.plu
RECTO 1

LIEU L-Wilwerwiltz
GPS N 49°58'38.9"
E 05°58'20.9"
COOR (Enneschtpötz)
ALT 355 m
ECOL Quercus/Carpinus

5 SPCO ROM DAG
P Ia- IIa 1- 4
Q IIb-IIIb 5-11
R IIIc- IVe 12-26
6 S-ACRE T-DOUX U-AMER

D 5
I Ib

F 4 G 2

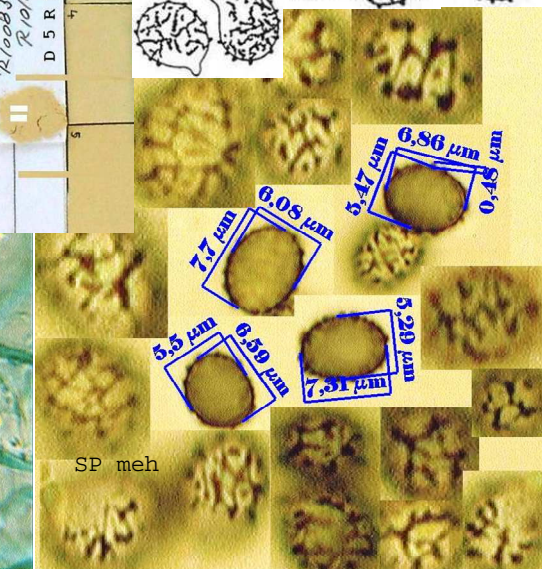
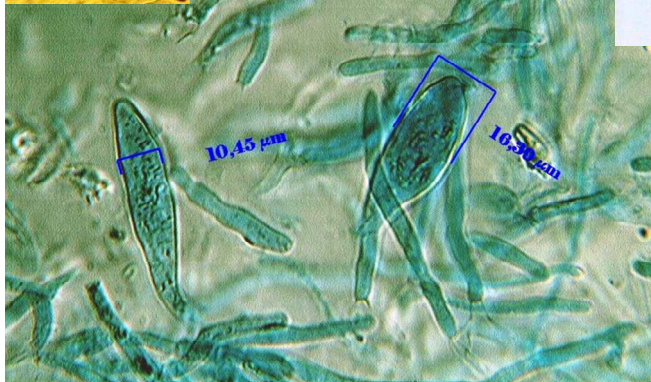
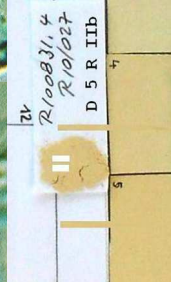
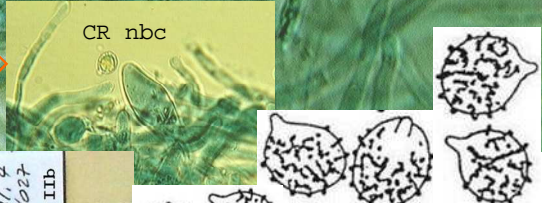
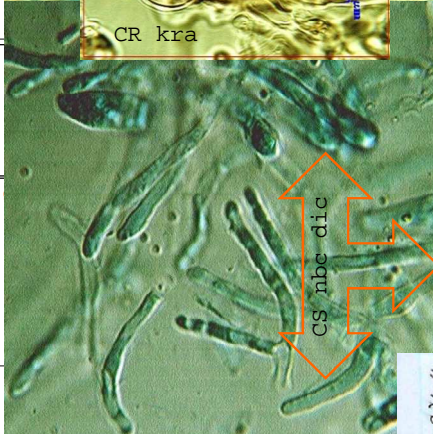
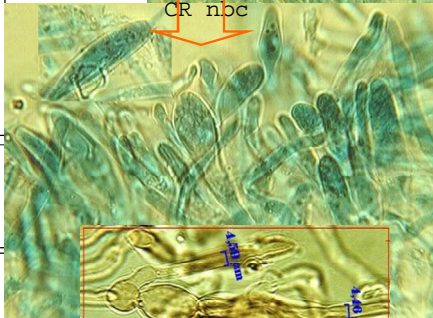
1 A ro-rs-po
B ve-ol
C ja-or
D bl-li-vo
E wh +-
F br-gr-no
G mixte

2 CUTIS SEP
H I J
±¼ ¼¾ +¾

3 STIPE
K wh
L color

4 CHAPEAU Ø
M 10-20
N 3-10 cm
O 1- 3

7 V CHAIR
DECOLOR
8 W DC+
X DC-HP-
Y HP+
Z DC+HP+



REMARQUES

REF: RO/SA/BM# / BK/CR/KG/MA/GR/ W. JURKEIT & W. SCHÖSSLER (DGfM2010)



1 2 3 4 / 5 6 7 8
F I K N Q T - W
D - - - - -