

R12----/-- Russula medullata
SG Heterophyllidia / S Heterophyllae / Ss Griseinae

EXS R12/---

R.med
RECTO

LIEU -
GPS -
-
COOR -
ALT - m
ECOL -



5	SPCO	ROM	DAG	
P	Ia- IIa	1- 4		
Q	I Ib- IIIb	5-11		
R	IIIc- IVe	12-26		
6	S-ACRE	T-DOUX	U	
F		-Gaiac-		
e--		<5"		
Q		>5"		
			D 9-11	
			R IIIa-b	
			S IIIa-b	

- 1 A ro-rs-po
- B ve-ol
- C ja-or
- D bl-li-vo
- E wh +-
- F br-gr-no
- G mixte

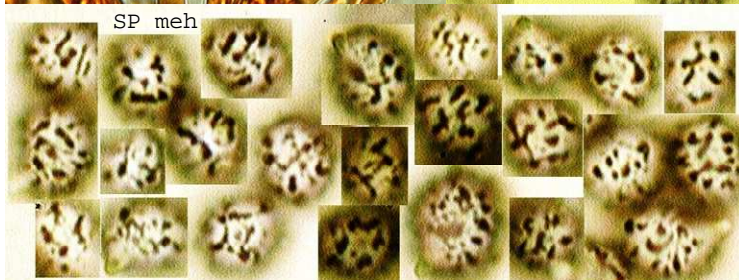
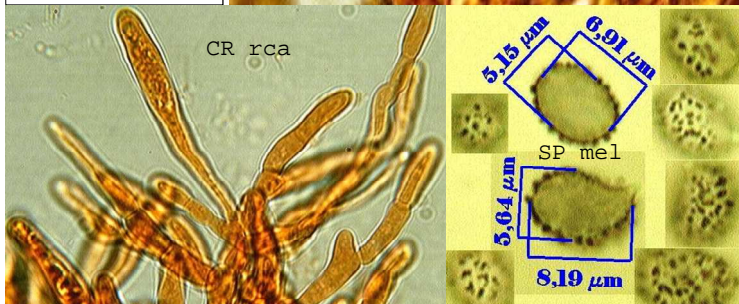
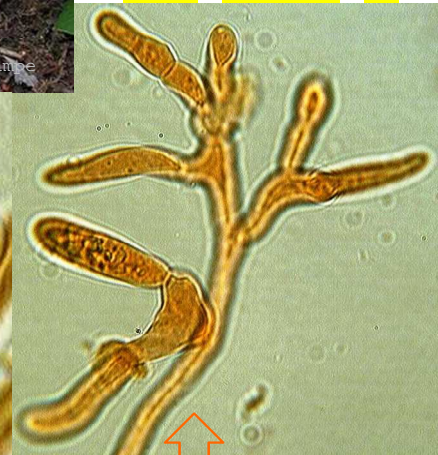


- 2 CUTIS SEP
- H I J
- ±¼ ¼¾ +¾

- 3 STIPE
- K wh
- L color

- 4 CHAPEAU Ø
- M 10-20
- N 3-10 cm
- O 1- 3

- 7 V CHAIR
- DECOLOR
- 8 W DC+
- X DC-HP-
- Y HP+
- Z DC+HP+



REMARQUES (% NOTES verso)

REF:

RO307/SA347/BM-#56/BK6-160/CR1421/ER188/KG2-453/MA5-419/GR100

1	2	3	4	5	6	7	8
B	I	K	N	Q	T	-	W
F	-	-	-	-	-	-	-