

R110915/01 *Russula emeticolor*  
SG Incrustatula / S Lilaceinae / Ss Lilaceinae

EXS R11/---

**R.emi**  
RECTO

LIEU L-DIPPACH  
GPS (Mamer Rättchen)  
COOR 68-69/75-76  
ALT 320 m  
ECOL Fagus

leg VALMORBIDA Norbert

pas d'exsiccata

5	SPCO	ROM	DAG			
P	Ia-	IIa	1- 4	1-2		
Q	IIb-	IIIb	5-11			
R	IIIc-	Ive	12-26			
6	S-ACRE	T-DOUX	U-AMER			
F		G*	SVA			

- 1 A ro-rs-po
- B ve-ol
- C ja-or
- D bl-li-vo
- E wh +-
- F br-gr-no
- G mixte

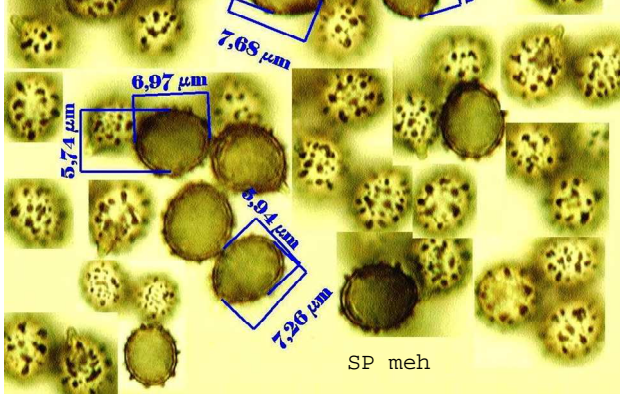
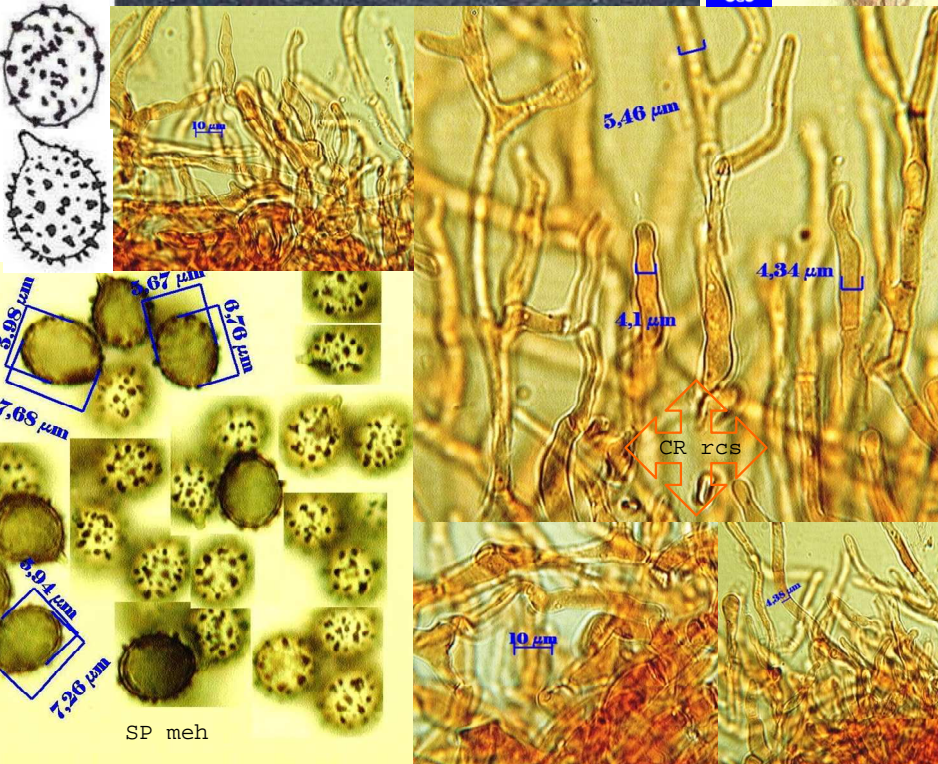
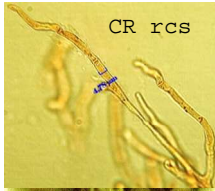
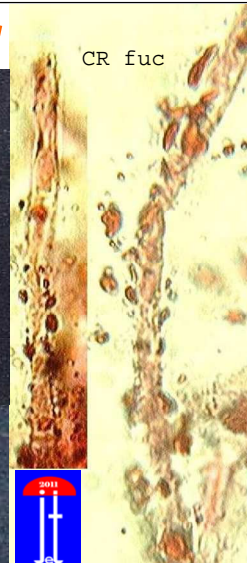
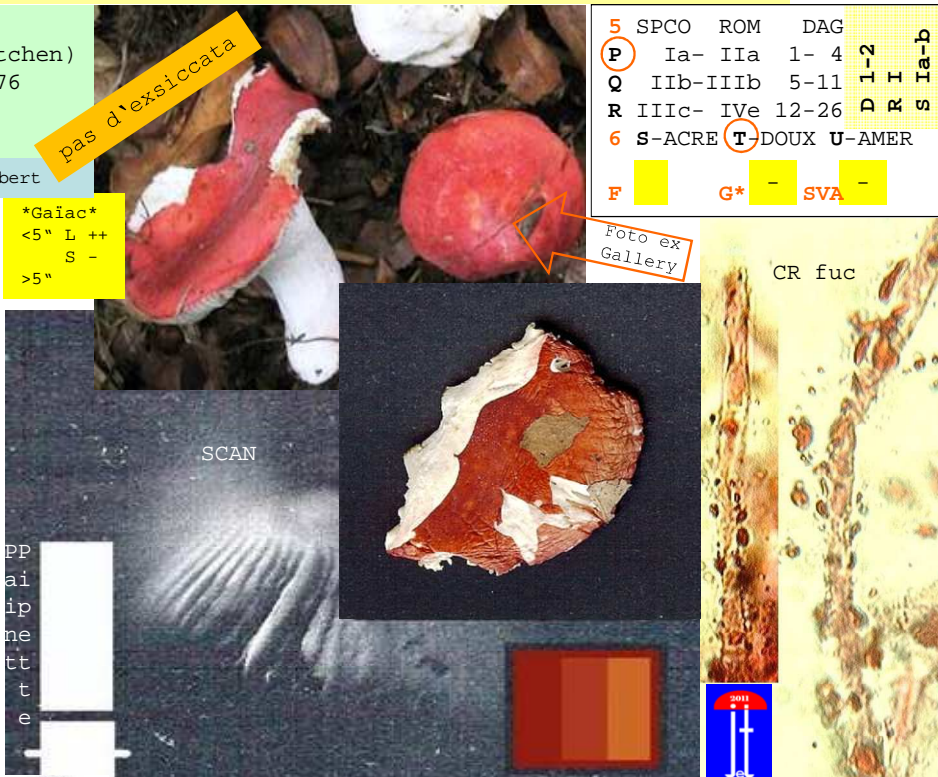
\*Gaiac\*  
<5" L ++  
S -  
>5"

- 2 CUTIS SEP
- H I J
- ±¼ ¼ +¾

- 3 STIPE
- K wh
- L color

- 4 CHAPEAU Ø
- M 10-20
- N 3-10 cm
- O 1- 3

- 7 V CHAIR
- DECOLOR
- 8 W DC+
- X DC-HP-
- Y HP+
- Z DC+HP+



REMARQUES (% NOTES verso)

REF:

RO542/SA1311/BM60#102/BK6-128/CR1486/ER-/KG2-481/MA5-457/GR277

1	2	3	4	5	6	7	8
A	I	K	O	P	T	-	Y
-	-	-	-	-	-	-	-