

R140522/01 *Russula cyanoxantha*
SG Heterophyllidia / S Heterophyllae / Ss Cyanoxanthinae

EXS R14/001

R. cya
RECTO

LIEU L-WILWERWILTZ
GPS -
COOR W2 88-89 (H1-17b)
ALT 380 m
ECOL Quercus/Carpinus
ODOR -

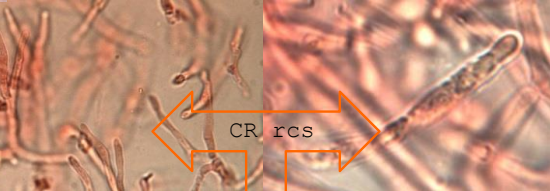
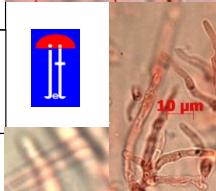
5	SPCO	ROM	DAG
P	Ia- IIa	1- 4	
Q	IIb-IIIb	5-11	D I R Ia S Ia
R	IIIc- IVe	12-26	
6	S-ACRE	T-DOUX	U-AMER
F	0	-Gaiac-	
e--	<5" s +	L	
Q	0	>5" s +++	L

- 1 A ro-rs-po
- B ve-ol
- C ja-or
- D bl-li-vo
- E wh +-
- F br-gr-no
- G mixte



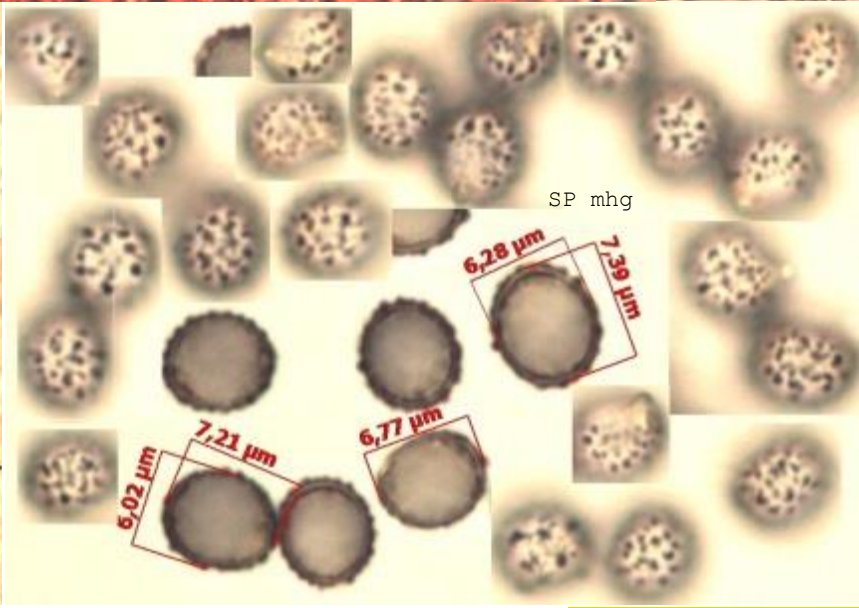
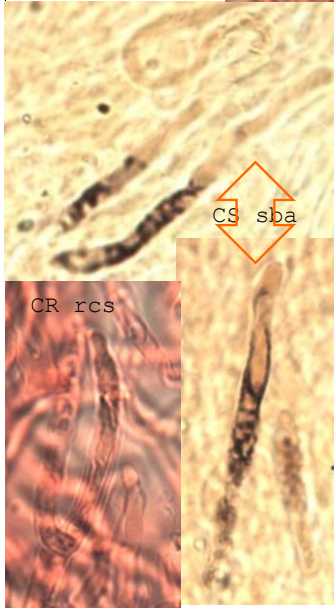
- 2 CUTIS SEP
- H I J
- ±¼ ¼¾ +¾

- 3 STIPE
- K wh
- L color



- 4 CHAPEAU Ø
- M 10-20
- N 3-10 cm
- O 1- 3

- 7 V CHAIR
- DECOLOR
- 8 W DC+
- X DC-HP-
- Y HP+
- Z DC+HP+



REMARQUES (% NOTES verso)

REF:

RO238/SA233/BM56#48/BK6-115/CR1408/ER168/KG2-465/MA1-49/GR74

1	2	3	4	/	5	6	7	8
B	I	K	N		P	T	-	W
CD	-	-	-		-	S	-	-

2014