

R120630/01 **Russula aurea (aurata Rom.)** EXS R12/036 **R. aur**
 SG Russula / S Polychromae / Ss Auratinae **RECTO**

LIEU L-Dudelange
 GPS - (Hard)
 COOR -
 ALT - m
 ECOL Fagus

Garnier-Delcourt Marie



RN RFS

5 SPCO ROM DAG
 P Ia- IIa 1- 4
 O IIb-IIIb 5-11
 R IIIc- IVe 12-26
 6 S-ACRE T-DOUX U
 D 11-20
 R IIIB-IVB
 S IIIC-IVB
 F -Gaiac-
 e-- <5"
 Q >5"

1 A ro-rs-po
 B ve-ol
 C ja-or
 D bl-li-vo
 E wh +-
 F br-gr-no
 G mixte

2 CUTIS SEP
 H I J
 ±¼ ¼¾ +¾

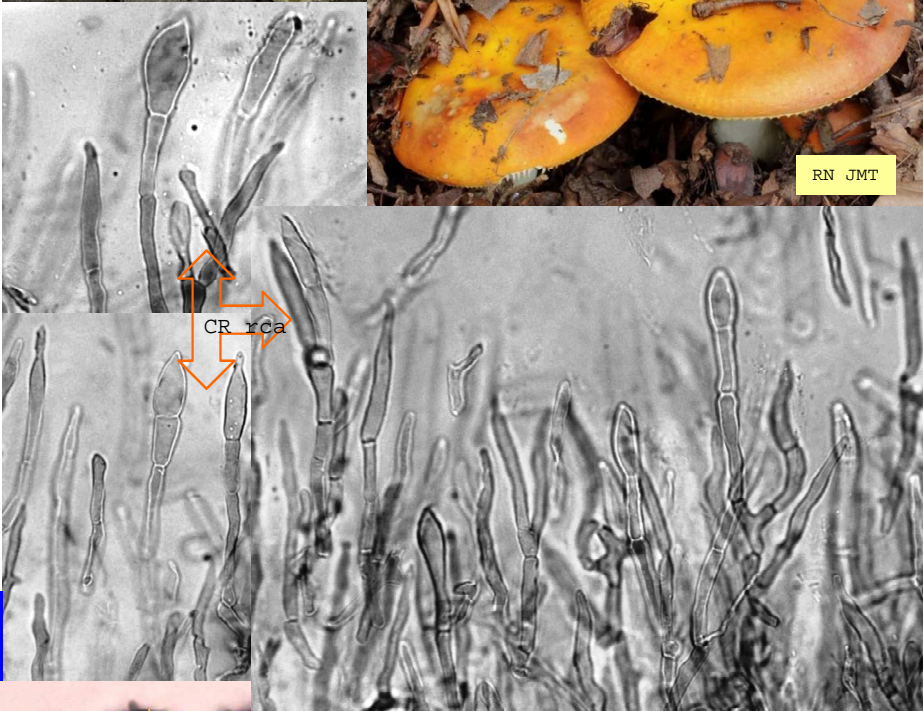
3 STIPE
 K wh
 L color

4 CHAPEAU Ø
 M 10-20
 N 3-10 cm
 O 1- 3

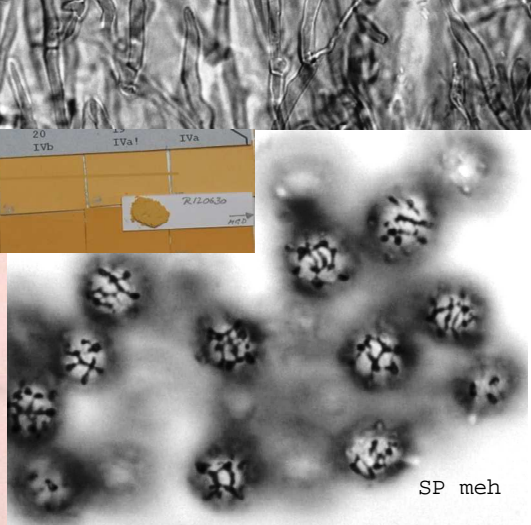
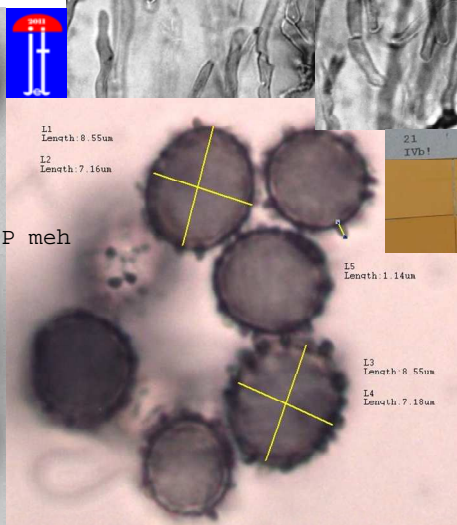
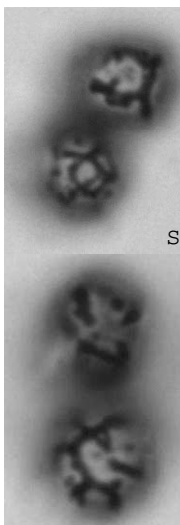
7 V CHAIR
 DECOLOR
 8 W DC+
 X DC-HP-
 Y HP+
 Z DC+HP+



RN JMT



CR yca



REMARQUES (% NOTES verso)

REF:

RO810/SA1072/BM68#115/BK6-99/CR1507/ER202/KG2-497/MA1-140/GR442

1 2 3 4 / 5 6 7 8
 A I K N R T - X
 C - L - - - -